

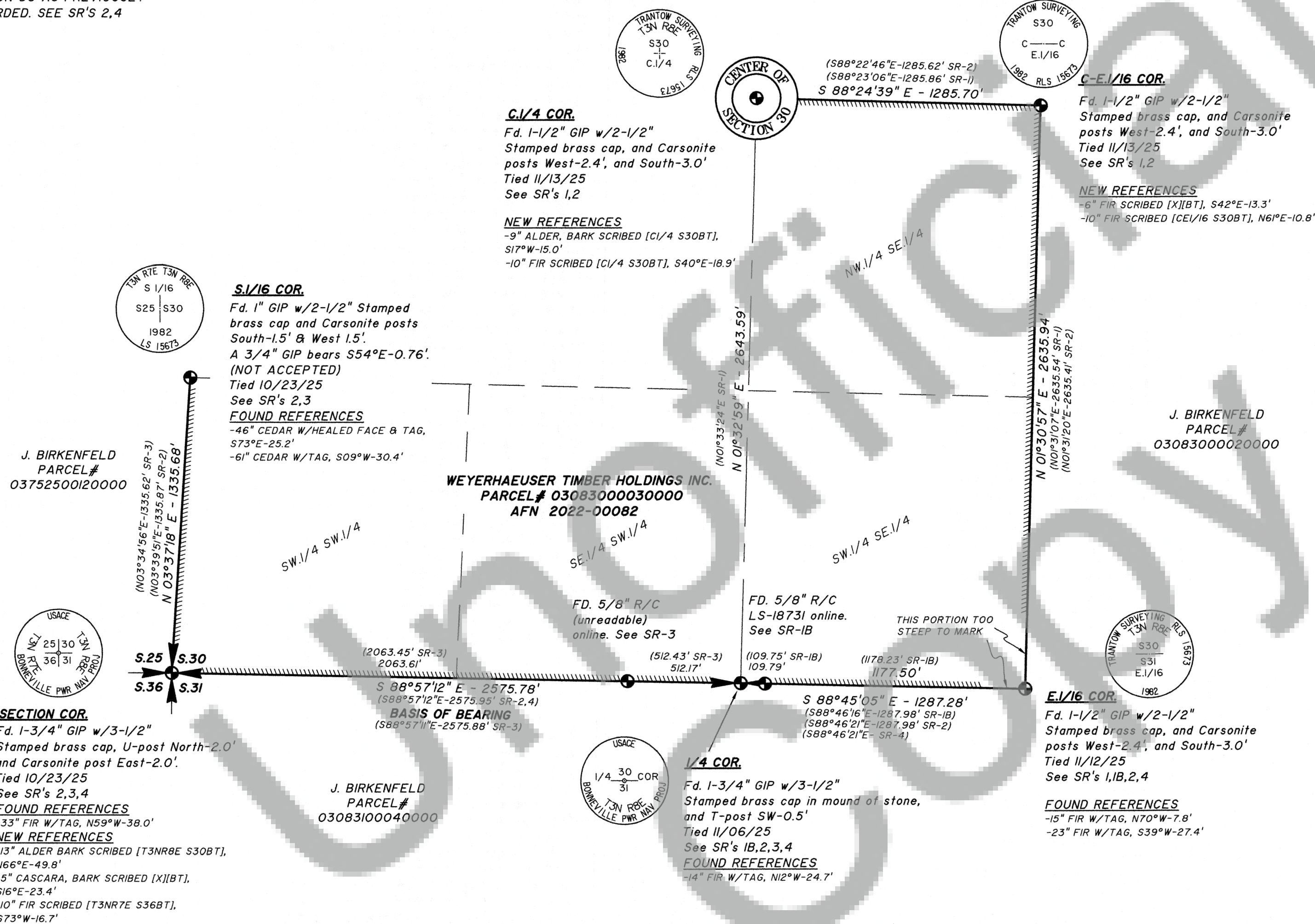
# INDEXING

SW.1/4 SW.1/4  
SE.1/4 SW.1/4  
NW.1/4 SE.1/4  
SW.1/4 SE.1/4  
SECTION 30, T3N R8E W.M.

## A DEPENDENT RECORD OF SURVEY for Weyerhaeuser Timber Holdings Inc. of the S.1/2 of Section 30, T3N R8E W.M. situated in SKAMANIA COUNTY, WASHINGTON

### BASIS OF BEARING

BETWEEN FOUND MONUMENTS ON  
THE SOUTH LINE OF THE SW.1/4  
OF SECTION 30 AS PREVIOUSLY  
RECORDED. SEE SR'S 2,4



### LEGEND

- = A corner FOUND during this survey as described
- ( ) = A Bearing and/or Distance of record
- R/C = A rebar with stamped plastic surveyor's cap
- AFN = Auditor's File Number
- GIP = Galvanized Iron Pipe
- T-post = A 6' steel fence post
- U-post = A 6' steel or aluminum channel post
- ===== = A line marked this survey with 1/2"x6' white fiberglass posts, painted blazes and flagging

### SURVEY REFERENCES (SR)

- 1) 1983 SURVEY BY R. GAYLORD, LS-18731, BK.2 PG.119
- 2) 1983 SURVEY BY R. GAYLORD, LS-18731, BK.2 PG.115
- 3) 1982 SURVEY BY T. TRANTOW, LS-15673, BK.2 PG.113
- 4) 1982 SURVEY BY R. GAYLORD, LS-18731, BK.2 PG.82
- 5) 1975 SURVEY BY J. OLSON, LS-9025, BK.1 PG.62

\*This survey was conducted using a "LEICA TS06+ TOTAL STATION (least read 05") utilizing a CLOSED traverse through existing corners and/or control, obtaining a relative accuracy exceeding 1:10,000.

\*\*Each new corner BT was measured to the center of the tree, referenced by a 60d nail on the right side w/a reference tag locating the corner.

### SURVEYOR'S CERTIFICATE

This map correctly represents a survey made by me or under my direction, in conformance with the requirements of the Survey Recording Act, at the request of  
WEYERHAEUSER CO, in SEPTEMBER, 2025.

Phillip R. Gustin  
Phillip R. Gustin PLS  
Certificate no. 37529

Date signed: 12/4/25

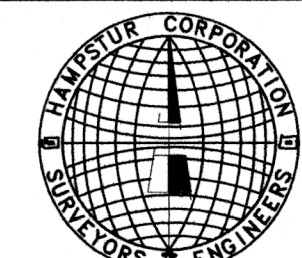


### AUDITOR'S CERTIFICATE

Filed for record this 16th day of December, 2025  
at 9:12 A.M., in BOOK 1 of SURVEYS, at  
PAGE 1, at the request of HAMPSTUR CORPORATION.  
Robert Waymire  
COUNTY AUDITOR  
K. J. M.  
DEPUTY AUDITOR

AFN 2025-002029

### HAMPSTUR CORPORATION



P.O. Box 368  
Kelso, Washington 98626  
Phone: (360) 423-8166

Calculated by: TLG  
Checked by: PRG  
Drawn by: TLG  
Completion date: 11/13/2025  
Field Book no.: PS-988  
Drawing No.: 25-646.DWG  
HAMPSTUR JOB no.: 25-646  
Sheet no.: 1 of 1