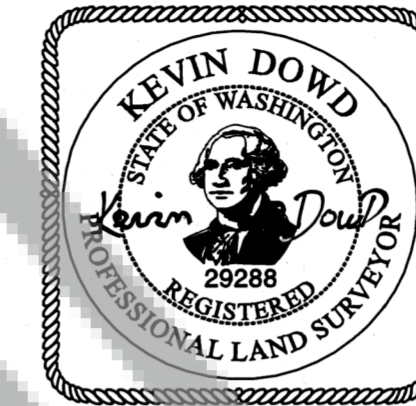
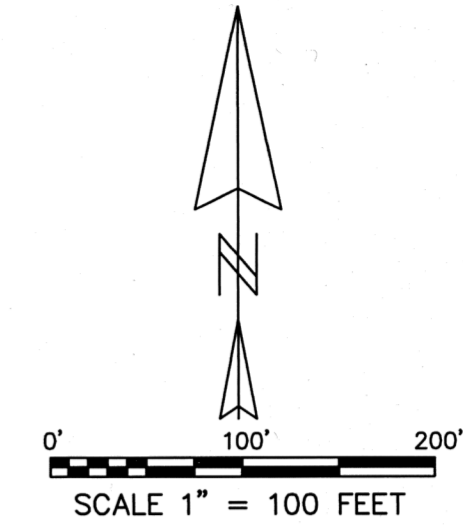


LEGEND

- SET 5/8" X 30" IRON ROD WITH YELLOW PLASTIC CAP MARKED "WYEAST SURVEY PLS 29288"
- FOUND MONUMENT AS NOTED
- CALCULATED POSITION
- IP IRON PIPE
- GIP GALVANIZED IRON PIPE

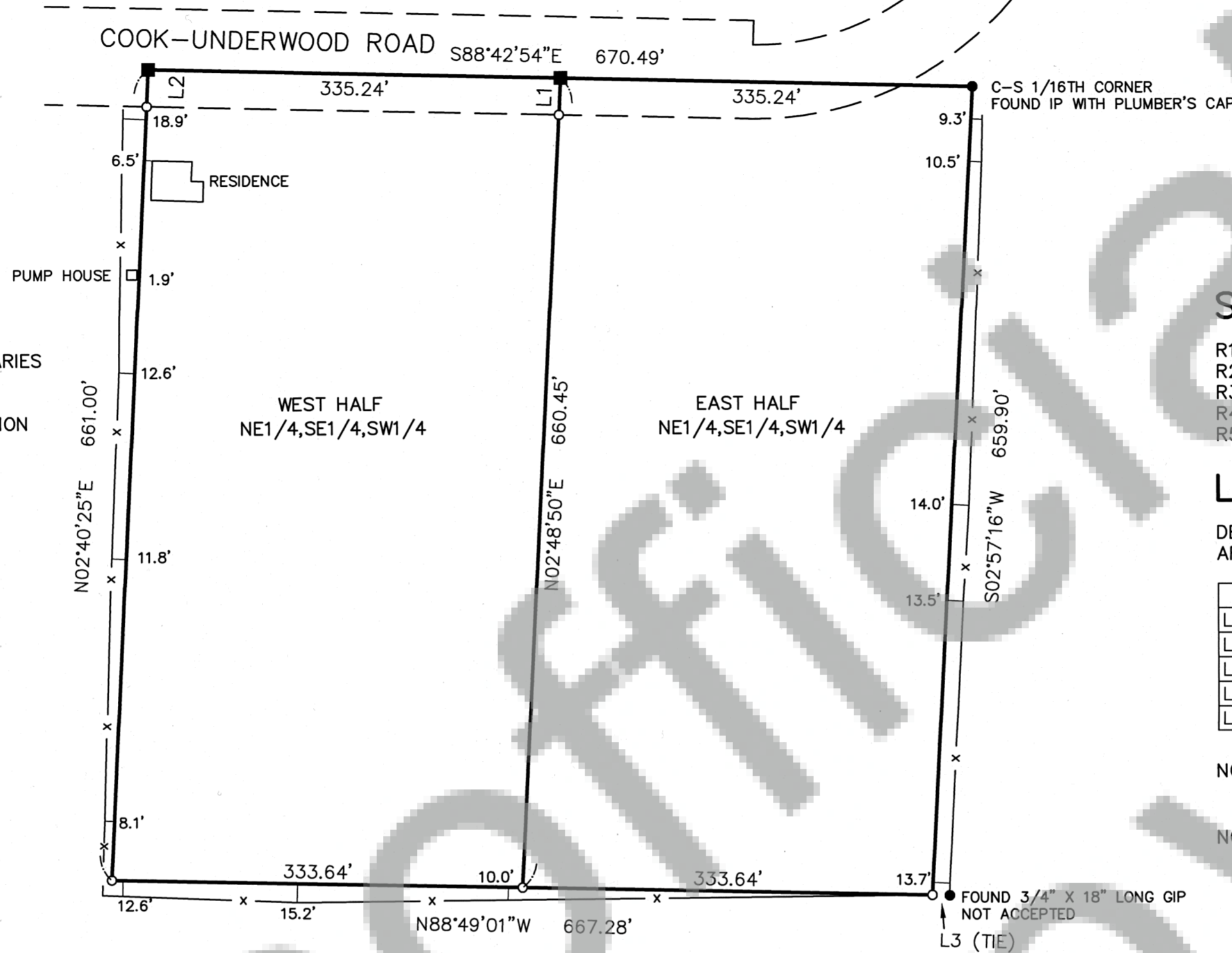


AUGUST 18, 2025



NARRATIVE

THE PURPOSE OF THIS SURVEY IS TO MONUMENT THE BOUNDARIES AND TO FACILITATE THE DIVISION OF THE NE1/4, SE1/4, SW1/4 OF SECTION 11 INTO TWO TRACTS. THE LAND IS EXEMPT FROM THE SKAMANIA COUNTY SUBDIVISION ORDINANCE AS PER SECTION 17.04.010 (7). THE ALIQUOT PARTS WERE ESTABLISHED BASED ON THE FOUND MONUMENTS AS SHOWN.



SURVEY REFERENCES

- R1) BOOK 1 OF SURVEYS, PAGE 240
- R2) BOOK 3 OF SURVEYS, PAGE 32
- R3) BOOK 3 OF SHORT PLATS, PAGE 210
- R4) BOOK 3 OF SHORT PLATS, PAGE 279
- R5) AFN 2009 173545

LEGAL DESCRIPTION

DEED BOOK 136, PAGE 993
AFN 2018000997

LINE TABLE		
LINE	BEARING	LENGTH
L1	N02°48'50"E	30.01'
L2	N02°40'25"E	30.01'
L3	S88°30'14"E	14.18'
L4	S88°55'12"E	20.00'

NOTE 1: COOK-UNDERWOOD ROAD RIGHT OF WAY WAS NOT ESTABLISHED BY THIS SURVEY.

NOTE 2: THE FENCE LINES WERE TIED AT RANDOM LOCATIONS. EVERY DEFLECTION IN THE FENCE ALIGNMENT IS NOT DEPICTED.

THIS MAP CORRECTLY REPRESENTS A SURVEY MADE BY ME OR UNDER MY DIRECTION IN CONFORMANCE WITH THE REQUIREMENTS OF THE SURVEY RECORDING ACT AT THE REQUEST OF NANCY CLEMENT IN APRIL 2025.

Kevin Dowd
KEVIN DOWD PLS 29288

BASIS OF BEARING AND DISTANCES

THE BEARINGS AND DISTANCES SHOWN ARE ON THE WASHINGTON PLANE COORDINATE SYSTEM, SOUTH ZONE, NAD 83 (2011) EPOCH 2010.00 BASED ON GPS OBSERVATIONS. THEY WERE DERIVED FROM THE RESULTS OF POST PROCESSING BY JAVAD DATA PROCESSING ONLINE SERVICE. (DPOS)

THE CONVERGENCE ANGLE AT THE C-S 1/16TH CORNER IS -0°49'42".

DISTANCES SHOWN ARE GRID IN U.S. SURVEY FEET. TO OBTAIN GROUND DISTANCES DEVIDE THE GRID DISTANCE BY THE COMBINED SCALE FACTOR OF 0.99997383.

EQUIPMENT USED, METHOD OF SURVEY AND ACCURACY

THIS SURVEY WAS CONDUCTED USING GPS OBSERVATIONS AND CONVENTIONAL FIELD TRAVERSING TECHNIQUES. THE GPS OBSERVATIONS WERE MADE WITH A JAVAD T1M BASE AND JAVAD LS ROVER. TRAVERSING WAS DONE WITH A GEOMAX 3 SECOND TOTAL STATION AND RELATED ACCESSORIES. TRAVERSE LEGS BEGAN AND ENDED AT CONTROL POINTS ESTABLISHED BY GPS OBSERVATIONS. THE SURVEY WAS ADJUSTED BY LEAST SQUARES USING STAR*NET SOFTWARE. POSITIONAL TOLERANCE OF 0.07 FEET +/- 200 PPM AT THE 95% CONFIDENCE LEVEL WAS PASSED AS ESTABLISHED BY WAC 332-130-085.

AUDITOR'S CERTIFICATE

FILED FOR RECORD THIS 18th DAY OF August AT 4:42 IN AUDITOR'S FILE NO. 2025-061300 AT THE REQUEST OF WYEAST SURVEYS.

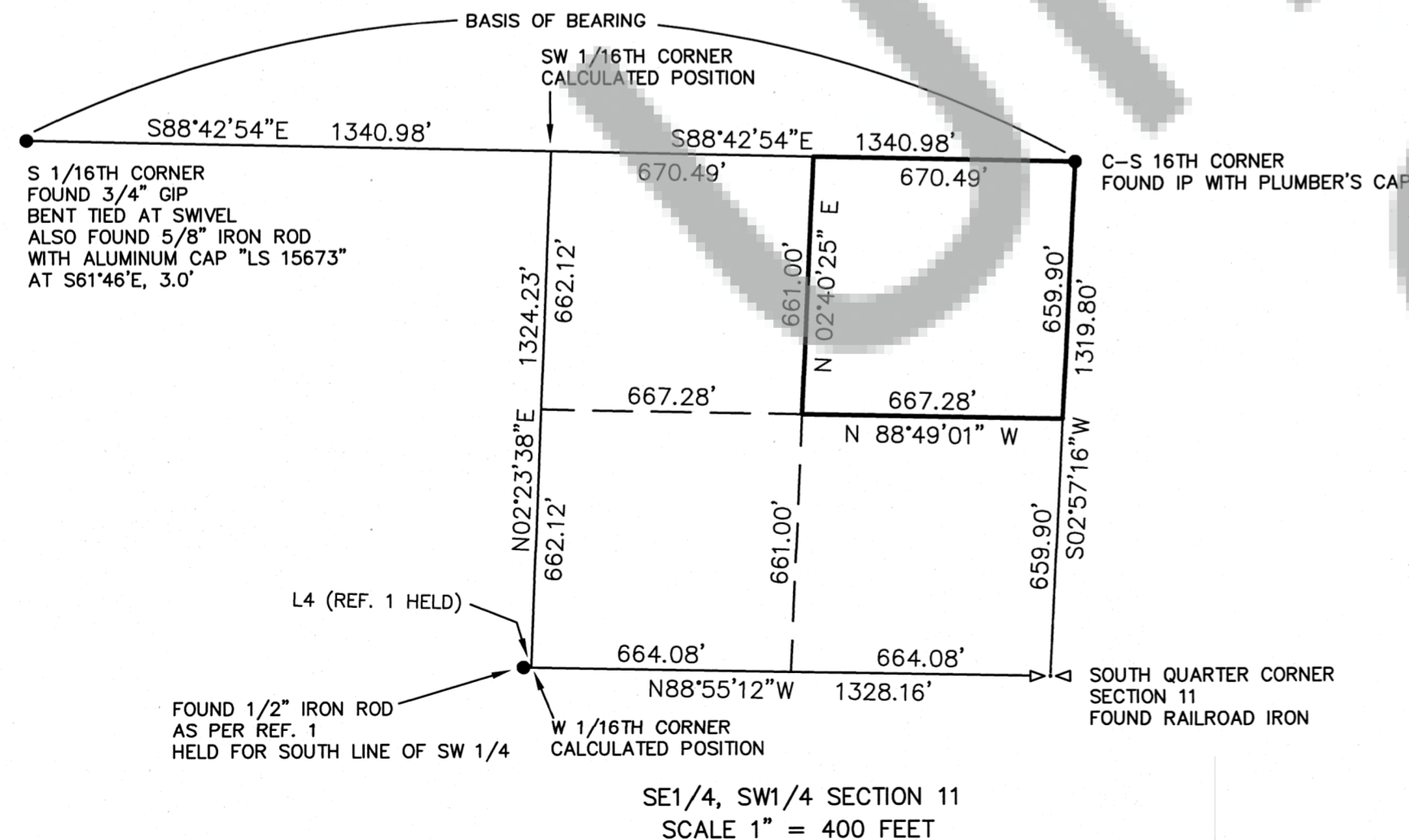
K. Tom deputy
COUNTY AUDITOR

RECORD OF SURVEY

LOCATED IN THE NE1/4, SE1/4, SW1/4 OF SECTION 11 TOWNSHIP 3 NORTH, RANGE 9 EAST, W.M. SKAMANIA COUNTY, WASHINGTON

FOR: MICHAEL AND NANCY CLEMENT

WYEAST SURVEYS
KEVIN DOWD
4399 WOODWORTH DR.
MT HOOD-PARKDALE OR, 97041
(541) 806-0312



SE1/4, SW1/4 SECTION 11
SCALE 1" = 400 FEET