

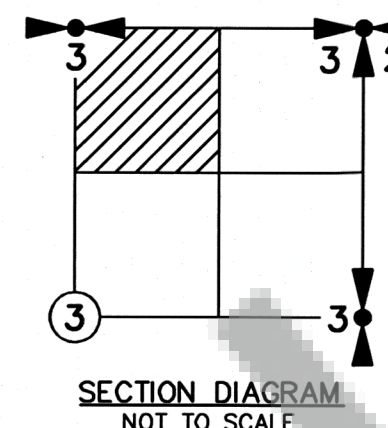
NARRATIVE

THE PURPOSE OF THIS SURVEY WAS TO POST THAT PORTION OF THE NORTH LINE OF SECTION 3 AS SHOWN FOR THE "POPE RESOURCES TRACT" CITED. CONTROLLING CORNERS SHOWN WERE TIED BY CONVENTIONAL TRAVERSE METHODS ORIGINATING FROM NEARBY "RTK GPS POINTS". THE GPS POINTS WERE COLLECTED ON "WASHINGTON STATE PLANE COORDINATE SYSTEM, SOUTH ZONE" (NAD 83/2011) WHICH WAS THE BASIS OF BEARING FOR THIS SURVEY. A CLOSED LOOP TRAVERSE BEGINNING AND ENDING ON SAID GPS POINTS WAS THEN RAN ALONG THE LINE SHOWN AS MARKED. NO NEW MONUMENTS WERE ESTABLISHED DURING THIS SURVEY. DISTANCES SHOWN ARE GRID DISTANCES, TO OBTAIN GROUND DISTANCES DIVIDE THE DISTANCES SHOWN BY THE COMBINED SCALE FACTOR OF 0.99987835.

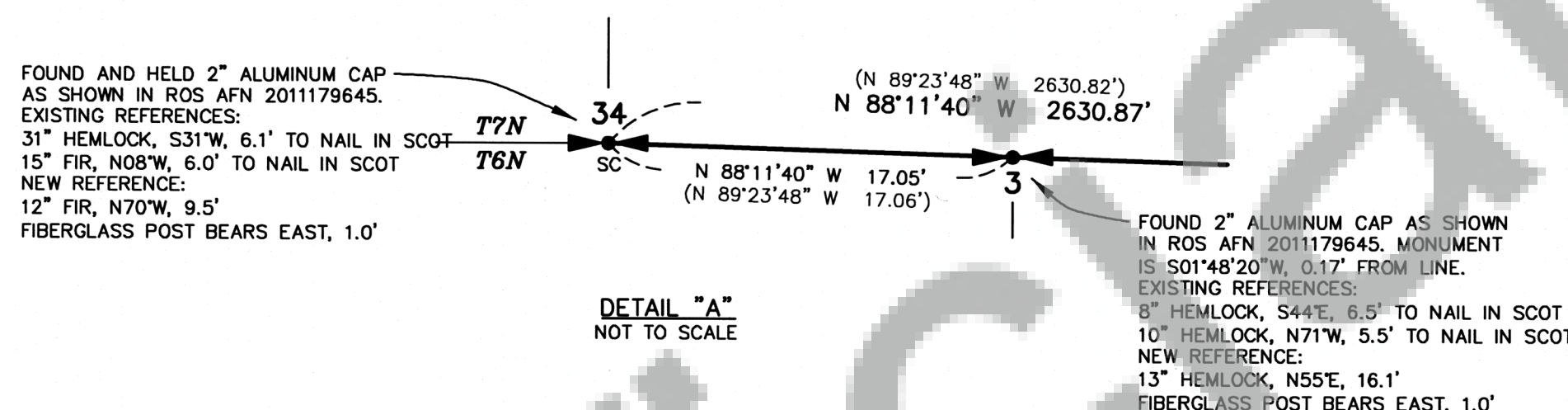
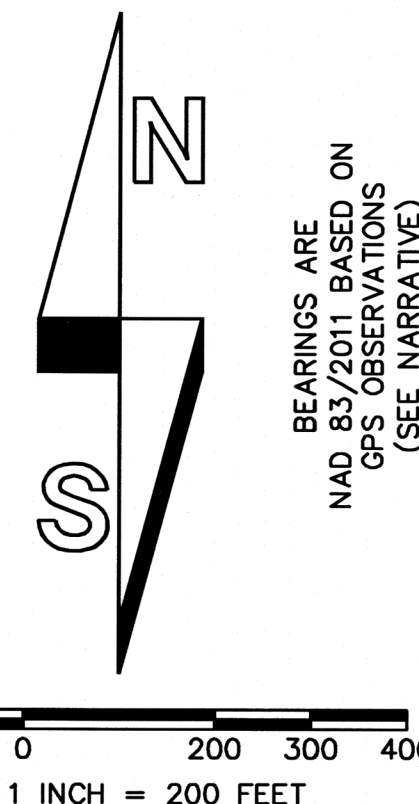
REFERENCE TREE NOTE

NEW REFERENCE TREES WERE MEASURED TO A 6" NAIL SET IN SIDE CENTER OF TREE. ALSO PLACED A BEARING TREE SIGN AND 4 NOTCHES FACING TOWARD THE CORNER. BEARINGS NOTED WERE TAKEN WITH A HAND HELD COMPASS WITH A DECLINATION SET TO 16° EAST.

DEED REFERENCE
STATUTORY WARRANTY DEED
BOUNDARY LINE ADJUSTMENT
POPE RESOURCES
TO
POPE RESOURCES
AFN 2018002113
(10/17/2018)



RECORD OF SURVEY IN THE NW 1/4 NE 1/4 OF SECTION 3, T6N, R5E, W.M. SKAMANIA COUNTY, WA.



FOUND AND HELD 2" ALUMINUM CAP AS SHOWN IN ROS AFN 2011179645. EXISTING REFERENCES: 31" HEMLOCK, S31°W, 6.1' TO NAIL IN SCOT 15" FIR, N08°W, 6.0' TO NAIL IN SCOT NEW REFERENCE: 12" FIR, N70°W, 9.5' FIBERGLASS POST BEARS EAST, 1.0'

BEGAN POSTING LINE 487' EAST OF THE SOUTH QUARTER CORNER OF SECTION 34

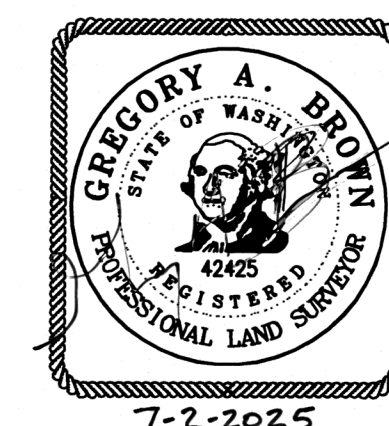
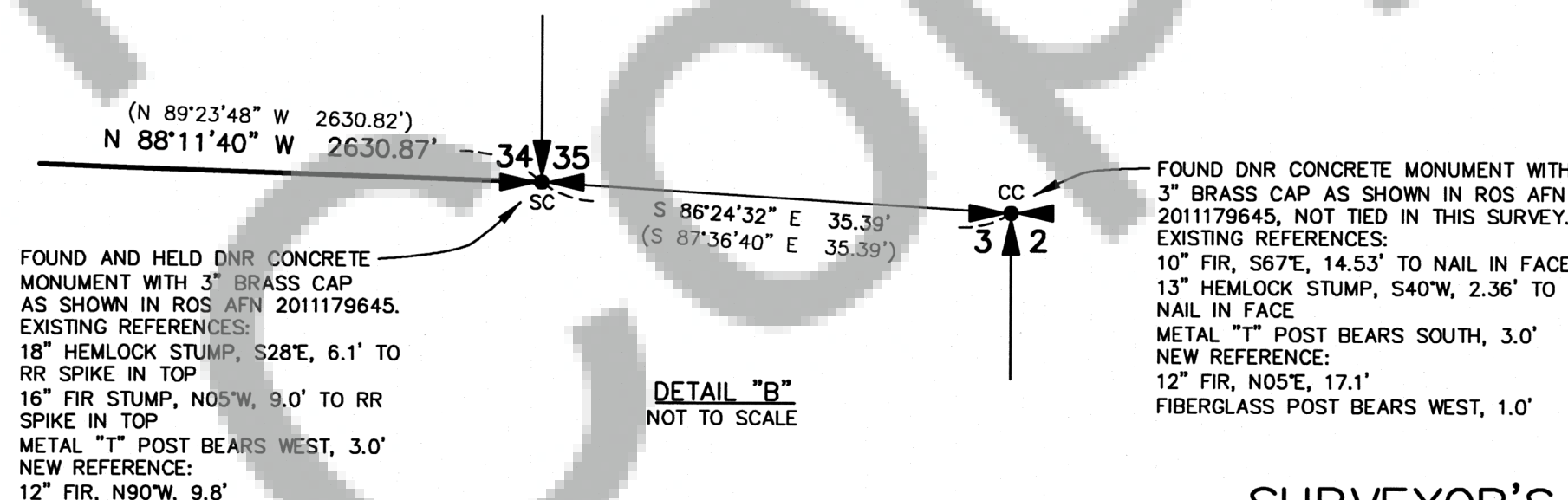
STATE OF WASHINGTON
(PER SKAMANIA COUNTY GIS)

(N 89°23'48" W 2630.82')
N 88°11'40" W 2630.87'

FOUND AND HELD DNR CONCRETE MONUMENT WITH 3" BRASS CAP AS SHOWN IN ROS AFN 2011179645. EXISTING REFERENCES: 18" HEMLOCK STUMP, S28°E, 6.1' TO RR SPIKE IN TOP 16" FIR STUMP, N05°W, 9.0' TO RR SPIKE IN TOP METAL "T" POST BEARS WEST, 3.0' NEW REFERENCE: 12" FIR, N90°W, 9.8'

LEGEND:

- INDICATES MONUMENT FOUND (UNLESS NOTED OTHERWISE)
- () INDICATES RECORD INFORMATION PER ROS AFN 2011179645
- INDICATES LINE MARKED WITH 1/2" x 72" FIBER GLASS RODS WITH RED RIBBON. TREES ALONG LINE BLAZED AND PAINTED WITH BLUE PAINT.
- ROS RECORD OF SURVEY
- AFN AUDITOR'S FILE NUMBER
- DNR DEPARTMENT OF NATURAL RESOURCES
- GPS GLOBAL POSITIONING SYSTEM
- RTK REAL TIME KINEMATIC
- SC STANDARD CORNER
- CC CLOSING CORNER
- SCOT SIDE CENTER OF TREE
- RR RAIL ROAD



SURVEYOR'S CERTIFICATE

THIS MAP CORRECTLY REPRESENTS A SURVEY MADE BY ME OR UNDER MY DIRECTION IN CONFORMANCE WITH THE REQUIREMENTS OF THE SURVEY RECORDING ACT AT THE REQUEST OF RAYONIER FOREST RESOURCES, L.P. IN JUNE, 2025.

Gregory A. Brown 7/2/2025
GREGORY A. BROWN, PROFESSIONAL LAND SURVEYOR, LS# 42425

AUDITOR'S CERTIFICATE

FILED FOR RECORD THIS 7th DAY OF JULY 20 25 AT 3:21 P.M. IN BOOK 2025-001028 OF SURVEYS AT PAGE 2
AT THE REQUEST OF BROWN SURVEYING, PLLC.
AUDITOR'S FILE NUMBER ku bjm

DEPUTY COUNTY AUDITOR

BROWN SURVEYING, PLLC MAKES NO WARRANTIES AS TO MATTERS OF UNWRITTEN TITLE SUCH AS ADVERSE POSSESSION, ACQUIESCENCE, ESTOPPLE, ETC.

A FIELD TRAVERSE WAS PERFORMED USING A NIKON NIVO 3.0C THREE SECOND TOTAL STATION WITH TDS DATA COLLECTION SYSTEM. THE FIELD TRAVERSE MET THE MINIMUM STANDARDS FOR SURVEYS AS DESIGNATED IN WAC 332-130-090. ALL CORNERS NOTED AS FOUND WERE VISITED ON 6-30-2025.

SCALE: 1"=200'
JOB NO. 24-129
DATE: 7-2-2025
CALC BY: GAB
DRAWN BY: GAB
CHECKED BY: GAB
SHEET 1 OF 1

BROWN
SURVEYING PLLC

PO BOX 414
AMBOY, WA 98601
360-600-0846
ebrownsurveying@gmail.com