

RETURN TO:
Erielle Lamb
987 McClellan Rd
Vancouver, WA
98661

LAND CORNER RECORD

THIS FORM IS FOR RECORDING A PLSS CORNER MONUMENT AND ACCESSORY INFORMATION WHEN A RECORD OF SURVEY IS NOT REQUIRED, PER RCW 58.09.040(2). (UPDATED 8/01/2019. DO NOT REVISE THIS FORM)

CERTIFICATE: THIS LAND CORNER RECORD CORRECTLY REPRESENTS WORK PERFORMED BY ME OR UNDER MY DIRECTION IN CONFORMANCE WITH THE SURVEY RECORDING ACT.

GRANTOR: NAME: Erielle Lamb

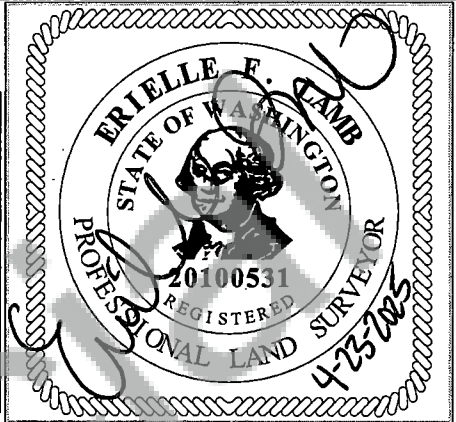
SIGNATURE: Erielle Lamb

CERTIFICATE NO.: 20100531

ADDRESS: 987 McClellan Rd
Vancouver, WA 98661

GRANTEE: PUBLIC

SEAL/SIGNATURE/DATE



INDEXING INFORMATION: 1/4 1/4 SEC: 12 TWP: 5N RGE: 4E

CORNER CODE, SEE DIAGRAM BELOW: G-25

ADDITIONAL IDENTIFIER: (PLSS CORNER NAME) East quarter corner of Section 12

WPCS: N: 223065 E: 1196345

ZONE: WA South NAD83(2011) DATE OF OBSERVATION: 4/15/2025

BLM GCDB POINT IDENTIFIER (OPTIONAL): 700540

PROVIDE THE FOLLOWING INFORMATION ON ATTACHMENTS, AS REQUIRED BY RCW 58.09.060(2)

- (a) AN ACCURATE DESCRIPTION AND LOCATION, IN REFERENCE TO THE CORNER POSITION, OF ALL MONUMENTS AND ACCESSORIES FOUND AT THE CORNER;
- (b) AN ACCURATE DESCRIPTION AND LOCATION, IN REFERENCE TO THE CORNER POSITION, OF ALL MONUMENTS AND ACCESSORIES PLACED OR REPLACED AT THE CORNER;
- (c) BASIS OF BEARINGS USED TO DESCRIBE OR LOCATE SUCH MONUMENTS OR ACCESSORIES;
- (d) COROLLARY INFORMATION THAT MAY BE HELPFUL TO RELOCATE OR IDENTIFY THE CORNER POSITION.

	1	2	3	4	5	6	7	8	9	10	11	12	13	14	15	16	17	18	19	20	21	22	23	24	25
A																									
B																									
C			6				5					4				3				2				1	
D																									
E																									
F																									
G			7				8					9				10				11			12		
H																									
J																									
K																									
L			18				17					16				15				14			13		
M																									
N																									
O																									
P			19				20					21				22				23			24		
Q																									
R																									
S																									
T			30				29					28				27				26			25		
U																									
V																									
W																									
X			31				32					33				34				35			36		
Y																									
Z																									
	1	2	3	4	5	6	7	8	9	10	11	12	13	14	15	16	17	18	19	20	21	22	23	24	25

LAND CORNER RECORD ATTACHMENT

CORNER INFORMATION: DISCUSS THE HISTORY, EVIDENCE FOUND, AND PERPETUATION OF THE CORNER. SHOW THE REFERENCES; PROVIDE THE DATE OF THE FIELD WORK; IF APPLICABLE, MAKE REFERENCE TO A MAP OF RECORD AND/OR THE FIELD BOOK/PAGE NO. USE ADDITIONAL SHEETS AS NEEDED.

History:

(1897) C.A. Homan, on July 6th, 1897, under contract #415 for the Government Land Office, set a hemlock post, 4 feet long, 5 inches square, 20 inches in the ground, marked "1/4 S" on the west face. From which the following references were set:

A 22" hemlock, S8°30'W, 57 links distance, marked "1/4 S BT"

A 22" cedar, N72°W, 52 links distance, marked "1/4 S BT"

(1950) As noted in Forest Service Corner Card records, as "info from Wey. Co.," 1 bearing tree was found, "CM" and old blazes running north and south in July of 1950.

(1964) As noted in Forest Service Corner Card records, by Frank Emerick, in May of 1964, 2 bearing trees were found as "info from R/W plat."

(1966) Surveyor James Jelley, in July 1966, under contract #231 with the Bureau of Land Management, determined the location of the corner based on record and evidence of remaining bearing tree. Found was the following:

A 33" sawed cedar stump, N72°W, 52 links distance, with scribe marks "1/4 S12 BT" visible in open blaze. Jelley then reset the monument at the corner location:

An iron post, 28 inches long, 2-1/2 inches diameter, 24 inches in the ground with a brass cap marked "1/4 S12 R4E S7 R5E T5N 1966"

Set were the following new bearing trees:

A 43" hemlock, N46°30'E, 47 links distance, marked "1/4 S7 BT"

A 16" maple, N40°45'W, 109 links distance, marked "1/4 S12 BT"

(1980) Forestry Technician, D. Chambers visited corner on 2/27/1980 and found a 3-inch brass cap flush with the ground in good condition. Also found was a location poster and the following references:

A 34" hemlock, S8°30'W, 57 links distance, with large "E"

A 36" stump, S72°E, 52 links distance

(1980) Corner was visited by Norm Ward, for the US Forest Service on August 11, 1980. Ward found a 2-1/2 inch iron pipe with BLM brass cap. Also found were the following references:

A 2' 8" maple, N40°45'W, 109 links distance, with tag

A 36" hemlock, S8°30'W, 57 links distance, with tag (Bearing from tree to mon)

A 48" hemlock, N46°30'E, 47 links distance, with tag

Also set was a guard post, 4 feet North of brass cap, on line with Land Survey Monument sign attached, and painted 2 red lines, one above and one below, bearing tree tag on bearing trees.

(1981) Corner was visited by PLS Edward A. Butler, for Mike Hobbs and Associates, Inc., in 1981, recorded as Book 2 Page 15 with Clark County. Found was "BLM Cap and Accessories."

(Unknown) Per US Forest Service Corner Card records, corner was visited on an unknown date by an unknown person. Found was the BLM brass cap as set in 1966 and the following reference:

A 40" hemlock, N46°30'E, 47 links distance, scribed "1/4 S7 BT"

Evidence:

(2025) R. Ellis of USDA Forest Service, Columbia Land Zone, on 4/15/2025, recovered corner monument. Found 2-1/2 inch iron pipe with 2-1/4 inch Bureau of Land Management brass cap, flush with ground. The following references were found:

A 44" hemlock, N46°30'E, 47 links distance, with visible scribing.

A 30" rotten snag, N8°30'E, 57 links distance, with healed "E" on west face.

A 33" cedar stump, N72°W, 52 links distance.

Perpetuation:

Tied pink flagging around monument, painted 6 inch red band around all found bearing trees. Set aluminum guard post 5 feet north of corner with Land Survey Monument and Property Boundary signs attached. Set the following references:

A 5/8"x24" rebar, S41°W, 5.95' distance, with pink plastic cap "WA LS20100531" with aluminum guard post and Land Survey Monument sign and Bearing Tree tag attached.

A 5/8"x24" rebar, N37°W, 6.93' distance, with pink plastic cap "WA LS20100531" with aluminum guard post and Land Survey Monument sign and Bearing Tree tag attached.

A 29" cedar, S25°E, 19.2' distance, scribed "1/4 S7 BT", with washer attached to right side center that reads "WA PLS 20100531".

LAND CORNER RECORD ATTACHMENT

CORNER INFORMATION: DISCUSS THE HISTORY, EVIDENCE FOUND, AND PERPETUATION OF THE CORNER. SHOW THE REFERENCES; PROVIDE THE DATE OF THE FIELD WORK; IF APPLICABLE, MAKE REFERENCE TO A MAP OF RECORD AND/OR THE FIELD BOOK/PAGE NO. USE ADDITIONAL SHEETS AS NEEDED.

