

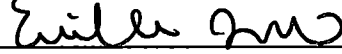
RETURN TO:
Erielle Lamb
987 McClellan Rd
Vancouver, WA
98661

LAND CORNER RECORD

THIS FORM IS FOR RECORDING A PLSS CORNER MONUMENT AND ACCESSORY INFORMATION WHEN A RECORD OF SURVEY IS NOT REQUIRED, PER RCW 58.09.040(2). (UPDATED 8/01/2019. DO NOT REVISE THIS FORM)

CERTIFICATE: THIS LAND CORNER RECORD CORRECTLY REPRESENTS WORK PERFORMED BY ME OR UNDER MY DIRECTION IN CONFORMANCE WITH THE SURVEY RECORDING ACT.

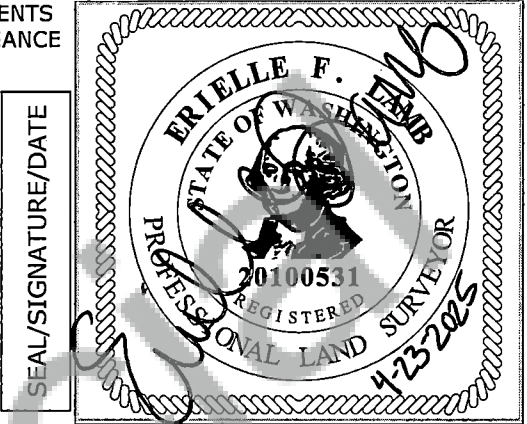
GRANTOR: NAME: Erielle Lamb

SIGNATURE: 

CERTIFICATE NO.: 20100531

ADDRESS: 987 McClellan Rd
Vancouver, WA 98661

GRANTEE: PUBLIC



INDEXING INFORMATION: 1/4 1/4 SEC: 12 TWP: 5N RGE: 4E

CORNER CODE, SEE DIAGRAM BELOW: E-25

ADDITIONAL IDENTIFIER: (PLSS CORNER NAME) Northeast corner of Section 12

WPCS: N: 2256956 E: 1196373

ZONE: WA South NAD83(2011) DATE OF OBSERVATION: 4/15/2025

BLM GCDB POINT IDENTIFIER (OPTIONAL): 700600

PROVIDE THE FOLLOWING INFORMATION ON ATTACHMENTS, AS REQUIRED BY RCW 58.09.060(2)

- (a) AN ACCURATE DESCRIPTION AND LOCATION, IN REFERENCE TO THE CORNER POSITION, OF ALL MONUMENTS AND ACCESSORIES FOUND AT THE CORNER;
- (b) AN ACCURATE DESCRIPTION AND LOCATION, IN REFERENCE TO THE CORNER POSITION, OF ALL MONUMENTS AND ACCESSORIES PLACED OR REPLACED AT THE CORNER;
- (c) BASIS OF BEARINGS USED TO DESCRIBE OR LOCATE SUCH MONUMENTS OR ACCESSORIES;
- (d) COROLLARY INFORMATION THAT MAY BE HELPFUL TO RELOCATE OR IDENTIFY THE CORNER POSITION.

	1	2	3	4	5	6	7	8	9	10	11	12	13	14	15	16	17	18	19	20	21	22	23	24	25
A																									
B																									
C			6				5				4				3				2				1		
D																									
E																									
F																									
G			7				8				9				10				11				12		
H																									
J																									
K																									
L			18				17				16				15				14				13		
M																									
N																									
O																									
P			19				20				21				22				23				24		
Q																									
R																									
S																									
T			30				29				28				27				26				25		
U																									
V																									
W																									
X			31				32				33				34				35				36		
Y																									
Z																									
	1	2	3	4	5	6	7	8	9	10	11	12	13	14	15	16	17	18	19	20	21	22	23	24	25

LAND CORNER RECORD ATTACHMENT

CORNER INFORMATION: DISCUSS THE HISTORY, EVIDENCE FOUND, AND PERPETUATION OF THE CORNER. SHOW THE REFERENCES; PROVIDE THE DATE OF THE FIELD WORK; IF APPLICABLE, MAKE REFERENCE TO A MAP OF RECORD AND/OR THE FIELD BOOK/PAGE NO. USE ADDITIONAL SHEETS AS NEEDED.

(1897) Corner set by deputy surveyor C.A Homan under contract #415. Survey for the east boundary of T5N R4E commenced June 28th, 1897 and was completed on July 11th, 1897. Set a hemlock post 5' long 8" square, 20" in the ground for the corner of S1, S6, S7, & S12 marked "T5N S6" on the NE, "R5E S7" on the SE, "S12" on SW, and "R4E S1" on the NW faces with 5 notches on the south and 1 on the north edge from which:

30" Hemlock, N32°E, 37 links distance, marked "T5NR5ES6BT".

20" Hemlock, S24°E, 51 links distance, marked "T5NR5ES12BT".

16" Hemlock, S60°W, 22 links distance, marked "T5NR4ES12BT".

30" Hemlock, N35°W, 37 links distance, marked "T5NR4ES1BT".

Corner information stored in BLM records.

(1981) Corner reset by WA LS#18896 Edward A. Butler of Mike Hobbs & Associates in May of 1981. Butler could not find evidence for the original corner after two searches. Original corner may have been destroyed by cat road created for the Ruth Fire in 1979. Re-set the corner during survey. Set 2.5"x30" pipe, 26" in the ground in a mound of stone with 2-1/2" brass cap. The following bearing objects were taken:

27" Fir, N28°E, 50.47' distance, scribed "T5NR5ES6BT".

19" Fir, S56°E, 3.62' distance, scribed "T5NR5ES7BT".

12" Fir, S34°W, 17.04' distance, scribed "T5NR4ES12BT".

15" Fir, N05°W, 47.86' distance, scribed "T5NR4ES1BT".

Painted 6" red bands around bearing trees.

Plat for the survey was submitted with Skamania Co. at book 2, page 15 of surveys and AFN92621. A corner card was also filed with AFN92555.

(April 2025)

Evidence: R. Ellis of the Columbia/Olympic Land Adjustment Zone of the U.S. Forest Service found the section corner of S1, S6, S7, & S12 of T5N R4/5E of the Willamette Meridian as set by Butler in 1981. Found 2-1/2" brass cap on 2" iron pipe, nearly flush with the ground. The following bearing references were recovered:

28" Douglas Fir, S56°E, 3.62' distance, with a healed blaze, 1.5' above the ground.

25" Douglas Fir, S34°W, 17.04' distance, with a healed blaze, 1.5' above the ground.

34" Snag, N28°E, 50.47' distance, with bearing tree tag attached.

The NW bearing tree is now a Rotten Stump.

Perpetuation:

Set 5/8"x24" rebar, N68°W, 7.0' distance, marked with "WA LS#20100531" pink plastic cap. Set aluminum guard post with land survey monument and bearing tree tag attached behind reference.

Set 5/8"x24" rebar, N28°E, 3.75' distance, marked with "WA LS#20100531" pink plastic cap. Set aluminum guard post with land survey monument and bearing tree tag attached behind reference.

LAND CORNER RECORD ATTACHMENT

CORNER INFORMATION: DISCUSS THE HISTORY, EVIDENCE FOUND, AND PERPETUATION OF THE CORNER. SHOW THE REFERENCES; PROVIDE THE DATE OF THE FIELD WORK; IF APPLICABLE, MAKE REFERENCE TO A MAP OF RECORD AND/OR THE FIELD BOOK/PAGE NO. USE ADDITIONAL SHEETS AS NEEDED.

