

RETURN TO:
Erielle Lamb
987 McClellan Rd
Vancouver, WA
98661

LAND CORNER RECORD

THIS FORM IS FOR RECORDING A PLSS CORNER MONUMENT AND ACCESSORY INFORMATION WHEN A RECORD OF SURVEY IS NOT REQUIRED, PER RCW 58.09.040(2). (UPDATED 8/01/2019. DO NOT REVISE THIS FORM)

CERTIFICATE: THIS LAND CORNER RECORD CORRECTLY REPRESENTS WORK PERFORMED BY ME OR UNDER MY DIRECTION IN CONFORMANCE WITH THE SURVEY RECORDING ACT.

GRANTOR: NAME: Erielle Lamb

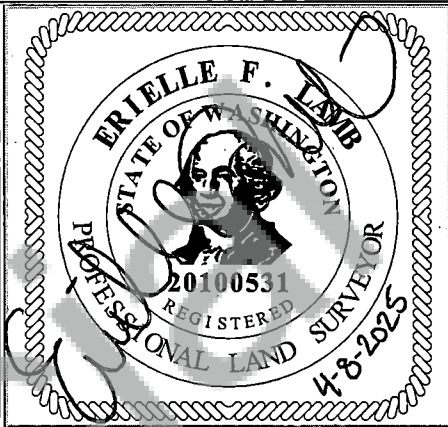
SIGNATURE: Erielle Lamb

CERTIFICATE NO.: 20100531

ADDRESS: 987 McClellan Rd
Vancouver, WA 98661

GRANTEE: PUBLIC

SEAL/SIGNATURE/DATE



INDEXING INFORMATION: 1/4 1/4 SEC: 25 TWP: 4N RGE: 4E

CORNER CODE, SEE DIAGRAM BELOW: T-25

ADDITIONAL IDENTIFIER: (PLSS CORNER NAME) East Quarter Corner S25 Only

WPCS: N: 175548 E: 1194201

ZONE: WA South NAD83(2011) DATE OF OBSERVATION: 3/5/2025

BLM GCDB POINT IDENTIFIER (OPTIONAL): 700240

PROVIDE THE FOLLOWING INFORMATION ON ATTACHMENTS, AS REQUIRED BY RCW 58.09.060(2)

- (a) AN ACCURATE DESCRIPTION AND LOCATION, IN REFERENCE TO THE CORNER POSITION; OF ALL MONUMENTS AND ACCESSORIES FOUND AT THE CORNER;
- (b) AN ACCURATE DESCRIPTION AND LOCATION, IN REFERENCE TO THE CORNER POSITION, OF ALL MONUMENTS AND ACCESSORIES PLACED OR REPLACED AT THE CORNER;
- (c) BASIS OF BEARINGS USED TO DESCRIBE OR LOCATE SUCH MONUMENTS OR ACCESSORIES;
- (d) COROLLARY INFORMATION THAT MAY BE HELPFUL TO RELOCATE OR IDENTIFY THE CORNER POSITION.

	1	2	3	4	5	6	7	8	9	10	11	12	13	14	15	16	17	18	19	20	21	22	23	24	25	
A																										A
B																										B
C			6				5				4				3				2					1		C
D																										D
E																										E
F																										F
G																										G
H			7				8				9				10				11				12			H
J																										J
K																										K
L																										L
M			18				17				16				15				14				13			M
N																										N
O																										O
P																										P
Q			19				20				21				22				23				24			Q
R																										R
S																										S
T																										T
U			30				29				28				27				26				25			U
V																										V
W																										W
X																										X
Y			31				32				33				34				35				36			Y
Z																										Z
	1	2	3	4	5	6	7	8	9	10	11	12	13	14	15	16	17	18	19	20	21	22	23	24	25	

LAND CORNER RECORD ATTACHMENT

CORNER INFORMATION: DISCUSS THE HISTORY, EVIDENCE FOUND, AND PERPETUATION OF THE CORNER. SHOW THE REFERENCES; PROVIDE THE DATE OF THE FIELD WORK; IF APPLICABLE, MAKE REFERENCE TO A MAP OF RECORD AND/OR THE FIELD BOOK/PAGE NO. USE ADDITIONAL SHEETS AS NEEDED.

History:

(1897) Surveyor C. A. Homan, under contract #415 with the GLO, in October 1897, set a fir post 4 feet long, 4 inches square, 10 inches in ground, marked "1/4 S" on W face. The following references were taken:

A 40" fir, N71°E, 14 links distance, marked "1/4 S BT"

A 45" fir, N24°W, 86 links distance, marked "1/4 S BT"

(1966) Corner visited by Cadastral Surveyor James E. Jelley, under contract #231 with the GLO, in July 1966. Found a cedar post 3 inches square, firmly set, 20 inches above ground, marked "1/4" on the North, "S30" on the East, and "S25" on the West sides, alongside which an iron pipe was found, 3/4 inch in diameter. Jelley set an iron post, 28 inches long, 2-1/2 inches in diameter, 24 inches in the ground with a brass cap marked "1/4 S25 T4N R4E 1966", and deposited the corner material alongside. The following references were found:

A 40" burned snag, N71°E, 14 links distance, marked "1/4 S30" visible in burned blaze. (Original bearing tree)

A 33" burned snag, S50 1/4°W, 140 links distance, marked "1/4 S25" visible in burned blaze.

From the brass cap, the following references were taken:

A 6" fir, S47-1/2°W, 129 links distance, marked "1/4 S25 BT"

A 5" fir, N48°W, 20-1/2 links distance, marked "X" at breast height

(1984) Corner visited by Assistant Forest Surveyor Norman Ward. Found a 2-1/2 inch brass cap on a 2 inch iron pipe with cedar post, 4"x4", scribed "1/4" on North face, "S30" on East face, and "S25" on West face. Also found a 1 inch iron pipe. The following references were found:

A 40" burned snag, N71°E, 9.3' distance, with visible scribe "1/4 S30"

A 16" douglas fir, N48°W, 13.5' distance, with healed blaze

The following reference was taken:

A 16" douglas fir, S85°W, 32.02' distance, scribed "1/4 S25 BT" and attached brass washer, "LS18734"

Evidence:

(2025) R. Ellis of USDA Forest Service, Columbia Land Zone, on 3/5/2025, recovered corner monument. Found 3-1/4 inch brass cap on 2-1/2 inch iron pipe, 4 inches above ground, as set by the BLM in 1966. The following references were found:

A 1" iron pipe, 1' above ground, S47°W, 4" distance

A 23" douglas fir, N48°W, 13.5' distance, with healed blaze

A 23" stump, S85°W, 32.02' distance, with evidence of a healed blaze

Perpetuation:

Set 5/8"x24" rebar with "WA LS#20100531" pink plastic cap S61°W, 5.17' distance, flush with ground. Aluminum guard post set behind rebar reference with land survey monument and bearing tree tag attached.

Set aluminum guard posts, within 5 feet of monument, to the North and South, with Land Survey Monument and Property Boundary signs attached. Painted 6 inch red bands around existing bearing trees and tied pink Property Boundary flagging around monument.

LAND CORNER RECORD ATTACHMENT

CORNER INFORMATION: DISCUSS THE HISTORY, EVIDENCE FOUND, AND PERPETUATION OF THE CORNER. SHOW THE REFERENCES; PROVIDE THE DATE OF THE FIELD WORK; IF APPLICABLE, MAKE REFERENCE TO A MAP OF RECORD AND/OR THE FIELD BOOK/PAGE NO. USE ADDITIONAL SHEETS AS NEEDED.

