

RETURN TO:
 Erielle Lamb
 987 McClellan Rd
 Vancouver, WA
 98661

Skamania County, WA **2025-000602**
 Total:\$0.00
 LCR 04/30/2025 09:25 AM
 Pgs=3

Request of: ERIELLE LAMB



LAND CORNER RECORD

THIS FORM IS FOR RECORDING A PLSS CORNER MONUMENT AND ACCESSORY INFORMATION WHEN A RECORD OF SURVEY IS NOT REQUIRED, PER RCW 58.09.040(2). (UPDATED 8/01/2019. DO NOT REVISE THIS FORM)

CERTIFICATE: THIS LAND CORNER RECORD CORRECTLY REPRESENTS WORK PERFORMED BY ME OR UNDER MY DIRECTION IN CONFORMANCE WITH THE SURVEY RECORDING ACT.

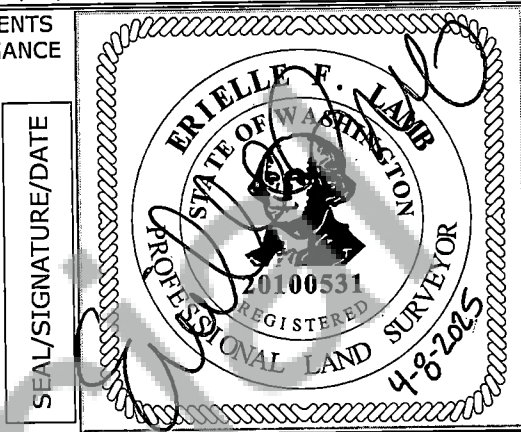
GRANTOR:
NAME: Erielle Lamb

SIGNATURE: *Erielle Lamb*

CERTIFICATE NO.: 20100531

ADDRESS: 987 McClellan Rd
Vancouver, WA 98661

GRANTEE: PUBLIC



INDEXING INFORMATION: 1/4 1/4 SEC: 24 & 25 TWP: 4N RGE: 4E

CORNER CODE, SEE DIAGRAM BELOW: R-25

ADDITIONAL IDENTIFIER: (PLSS CORNER NAME) Section Corner of S24 and S25 Only

WPCS: N: 178217 E: 1194294

ZONE: WA South NAD83(2011) **DATE OF OBSERVATION:** 3/31/2025

BLM GCDB POINT IDENTIFIER (OPTIONAL): 700300

PROVIDE THE FOLLOWING INFORMATION ON ATTACHMENTS, AS REQUIRED BY RCW 58.09.060(2)

- (a) AN ACCURATE DESCRIPTION AND LOCATION, IN REFERENCE TO THE CORNER POSITION, OF ALL MONUMENTS AND ACCESSORIES FOUND AT THE CORNER;
- (b) AN ACCURATE DESCRIPTION AND LOCATION, IN REFERENCE TO THE CORNER POSITION, OF ALL MONUMENTS AND ACCESSORIES PLACED OR REPLACED AT THE CORNER;
- (c) BASIS OF BEARINGS USED TO DESCRIBE OR LOCATE SUCH MONUMENTS OR ACCESSORIES;
- (d) COROLLARY INFORMATION THAT MAY BE HELPFUL TO RELOCATE OR IDENTIFY THE CORNER POSITION.

	1	2	3	4	5	6	7	8	9	10	11	12	13	14	15	16	17	18	19	20	21	22	23	24	25
A																									
B																									
C		6																							
D																									
E																									
F																									
G																									
H																									
J																									
K																									
L																									
M																									
N																									
O																									
P																									
Q																									
R																									
S																									
T																									
U																									
V																									
W																									
X																									
Y																									
Z																									
	1	2	3	4	5	6	7	8	9	10	11	12	13	14	15	16	17	18	19	20	21	22	23	24	25

LAND CORNER RECORD ATTACHMENT

CORNER INFORMATION: DISCUSS THE HISTORY, EVIDENCE FOUND, AND PERPETUATION OF THE CORNER. SHOW THE REFERENCES; PROVIDE THE DATE OF THE FIELD WORK; IF APPLICABLE, MAKE REFERENCE TO A MAP OF RECORD AND/OR THE FIELD BOOK/PAGE NO. USE ADDITIONAL SHEETS AS NEEDED.

History:

(1897) Surveyor C. A. Homan, under contract #415 with the GLO, on October 11th 1897, set a dogwood post, 4 feet long, 4 inches square, 20 inches in the ground, marked "T4N S19" on the Northwest side, "R5E S30" on the Southeast, "S25" on the Southwest, and "R4E S24" on the Northwest, with 2 notches on the South and 4 notches on the North edges. From which the following references were taken:

- A 14" fir, N30°E, 29 links distance, marked "T4N R5E S19 BT"
- A 30" fir, S44°E, 40 links distance, marked "T4N R5E S30 BT"
- A 36" fir, S83°W, 45 links distance, marked "T4N R4E S25 BT"
- A 36" fir, S18°30'W, 103 links distance, marked "T4N R4E S24 BT"

(1934) Corner visited by USFS according to secondhand report in a 1966 corner card. Reportedly found was a 4"x4" cedar post and iron pipe in good conditions along with the following references:

- A 30" fir snag, N57°W, 55'-3" distance
- A 40" fir snag, S79°W, 29'-4" distance
- A 36" fir snag, S48°E, 26'-8" distance

(1966) Corner visited by Cadastral Surveyor James E. Jelley, under contract #231 with the GLO, in July 1966. Found cedar post 3 inches square, 18 inches above the ground, marked "S25" on the Southwest and "S24" on the Northwest sides, alongside which a 3/4 inch iron pipe was found. Set an iron post, 28 inches long, 2-1/2 inches diameter, 24 inches in the ground, with brass cap marked "T4N S24 S25 R4E T4N R5E S30 1966." The following references were found:

- A 36" fir snag, S83°W, 45 links distance, with "T4N R4E S25 BT" visible on unhealed blaze.
- A 10" fir stump, N30°E, 29 links distance, no marks on decayed blaze
- A 28" sawed fir stump, S44°E, 40 links distance, with "T4N R5E S30" visible on burned blaze
- A 30" sawed fir stump, N54°W, 84 links distance, with "T4N R4E S24" visible on burned blaze.

From the brass cap the following references were taken:

- A 5" fir, S45°45'W, 50.5 links distance, marked "T4N R4E S25 BT"
- A 5" fir, N26°W, 105 links distance, marked "T4N R4E S24 BT"

(1974) Corner visited on October 8th, 1974 by William F. Hagedorn, recorded with Clark County as Book 3 Page 7. Found Bureau of Land Management brass cap on 2 inch iron pipe with a 3/4 inch iron pipe alongside. Also found were the following references:

- 3 original bearing trees with scribing
- 1 local bearing tree with scribing
- 2 new BLM bearing trees from 1961

(1979) Cadastral Surveyor, Beulah Jones visited corner on February 8th, 1979. Found a 3/4 inch iron pipe alongside a Bureau of Land Management brass cap and the following references:

- 3 original bearing trees
- 2 new bearing trees (BLM)
- SW bearing tree (from original record) noted as being a stump

(1982) In November 1982, William F. Hagedorn visits corner and finds a 2-1/2 inch iron pipe with BLM brass cap from 1966, as recorded by C.E. Whitten on USFS corner card, and at Clark County as Book 15 Page 139. Found the following references:

- A 36" fir snag, S83°W, 29.7' distance, with scribing, noted as an original reference
- A 14" fir, N26°W, 69.3' distance, with overgrown face, noted as a 1966 BLM tree
- A 14" fir, S46°W, 33.3' distance, with overgrown face, noted as a 1966 BLM tree

The following references were taken:

- A 10" fir, North, 73.6' distance
- A 6" fir, S60°E, 17.3' distance

(2004) Corner visited by H. Thomas Laird, for the State of Washington Department of Natural Resources, on record with Clark County as Book 53 Page 155, in 2004. Found a 2-1/2 inch iron pipe with stamped brass cap as described in Book 15 Page 139, on record with Clark County, by Hagedorn Inc.

Evidence:

(2025) E. Lamb of USDA Forest Service, Columbia Land Zone, on 3/31/2025, visited corner monument. Found a 3 inch brass Bureau of Land Management cap on a 2.5 inch iron pipe, 3 inches above ground. A 1/2 inch iron pipe was also found, 1 inch South of the monument, 1.5 feet high. The following references were also found:

- An 18" Doug fir, S60°E, 17.3' distance, with healed blaze
- A 31" Doug fir, S46°W, 33.3' distance, with healed blaze
- A 22" Doug fir, North, 73.6' distance
- A 16" Doug fir, N26°W, 69.3' distance, with small blaze at base

Perpetuation:

Pink flagging was tied around the monument. All blazes were painted red and 6" red bands were painted around bearing trees. Aluminum guard posts were set, within 5 feet of monument, with Property Boundary and Land Survey Monument signs attached and pink flagging tied on.

LAND CORNER RECORD ATTACHMENT

CORNER INFORMATION: DISCUSS THE HISTORY, EVIDENCE FOUND, AND PERPETUATION OF THE CORNER. SHOW THE REFERENCES; PROVIDE THE DATE OF THE FIELD WORK; IF APPLICABLE, MAKE REFERENCE TO A MAP OF RECORD AND/OR THE FIELD BOOK/PAGE NO. USE ADDITIONAL SHEETS AS NEEDED.

