

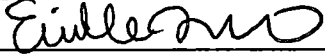
RETURN TO:  
Erielle Lamb  
987 McClellan Rd  
Vancouver, WA  
98661

LAND CORNER RECORD

THIS FORM IS FOR RECORDING A PLSS CORNER MONUMENT AND ACCESSORY INFORMATION WHEN A RECORD OF SURVEY IS NOT REQUIRED, PER RCW 58.09.040(2). (UPDATED 8/01/2019. DO NOT REVISE THIS FORM)

CERTIFICATE: THIS LAND CORNER RECORD CORRECTLY REPRESENTS WORK PERFORMED BY ME OR UNDER MY DIRECTION IN CONFORMANCE WITH THE SURVEY RECORDING ACT.

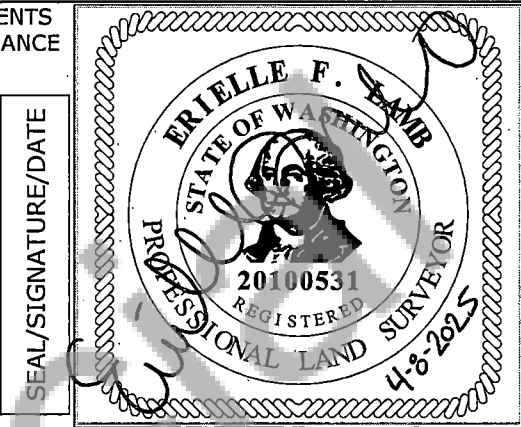
GRANTOR: NAME: Erielle Lamb

SIGNATURE: 

CERTIFICATE NO.: 20100531

ADDRESS: 987 McClellan Rd  
Vancouver, WA 98661

GRANTEE: PUBLIC



INDEXING INFORMATION: 1/4 1/4 SEC: 24 TWP: 4N RGE: 4E

CORNER CODE, SEE DIAGRAM BELOW: P-25

ADDITIONAL IDENTIFIER: (PLSS CORNER NAME) East Quarter Corner of S24 Only

WPCS: N: 180813 E: 1194326

ZONE: WA South NAD83(2011) DATE OF OBSERVATION: 3/31/2025

BLM GCDB POINT IDENTIFIER (OPTIONAL): 700340

PROVIDE THE FOLLOWING INFORMATION ON ATTACHMENTS, AS REQUIRED BY RCW 58.09.060(2)

- (a) AN ACCURATE DESCRIPTION AND LOCATION, IN REFERENCE TO THE CORNER POSITION, OF ALL MONUMENTS AND ACCESSORIES FOUND AT THE CORNER;
- (b) AN ACCURATE DESCRIPTION AND LOCATION, IN REFERENCE TO THE CORNER POSITION, OF ALL MONUMENTS AND ACCESSORIES PLACED OR REPLACED AT THE CORNER;
- (c) BASIS OF BEARINGS USED TO DESCRIBE OR LOCATE SUCH MONUMENTS OR ACCESSORIES;
- (d) COROLLARY INFORMATION THAT MAY BE HELPFUL TO RELOCATE OR IDENTIFY THE CORNER POSITION.

	1	2	3	4	5	6	7	8	9	10	11	12	13	14	15	16	17	18	19	20	21	22	23	24	25	
A																										A
B																										B
C			6				5				4				3				2					1		C
D																										D
E																										E
F																										F
G			7				8				9				10				11				12			G
H																										H
J																										J
K																										K
L			18				17				16				15				14				13			L
M																										M
N																										N
O																										O
P			19				20				21				22				23				24			P
Q																										Q
R																										R
S																										S
T			30				29				28				27				26				25			T
U																										U
V																										V
W																										W
X			31				32				33				34				35				36			X
Y																										Y
Z																										Z
	1	2	3	4	5	6	7	8	9	10	11	12	13	14	15	16	17	18	19	20	21	22	23	24	25	

# LAND CORNER RECORD ATTACHMENT

**CORNER INFORMATION:** DISCUSS THE HISTORY, EVIDENCE FOUND, AND PERPETUATION OF THE CORNER. SHOW THE REFERENCES; PROVIDE THE DATE OF THE FIELD WORK; IF APPLICABLE, MAKE REFERENCE TO A MAP OF RECORD AND/OR THE FIELD BOOK/PAGE NO. USE ADDITIONAL SHEETS AS NEEDED.

## History:

(1897) Surveyor C. A. Homan, under contract #415 with the GLO, on October 13, 1897, set a dogwood post, 4 feet long, 4 inches square, 20 inches in the ground, marked "1/4 S" on the West face, from which the following references were taken:

A 17" hemlock, S31°E, 44 links distance, marked "1/4 S BT"

A 28" hemlock, N55°W, 24 links distance, marked "1/4 S BT"

(1934) Corner visited by C.E.C, in 1930s, as noted by secondhand report in USFS corner cards and William F. Hagedorn, on record with Clark County as Book 3 Page 7. Reportedly found a 4"x4" cedar post and iron pipe 12 inches above ground, as well as the following references:

A 36" fir stump, S87°30'W, 90'-21" distance

A 48" fir stump, S51°E, 39' distance

(1961) Corner visited by BLM in 1961, as noted by secondhand report in USFS corner card from 1974. Insufficient evidence found to warrant monumentation.

(1982) In November 1982, C.E. Whitten made note in USFS corner cards that corner was recovered and found a 3/4 inch iron pipe N52°41E 17.01' with old USFS tags, noted no record of how pipe was set, and did not find any trace of bearing trees. William F. Hagedorn, for the USFS, calculated corner by single proportion and set a 2 inch aluminum pipe with aluminum cap stamped "T4N 1/4 S24 R4E 1982 LS 9579" at proportioned position, on record with Clark County as Book 15 Page 139. The following references were taken:

A 16" Alder, N2°E, 44.8' distance

A 24" Alder, S11°E, 11.6' distance

(2004) Corner visited by H. Thomas Laird, for the State of Washington Department of Natural Resources, on record with Clark County as Book 53 Page 155. Found 3 inch stamped aluminum cap as set by Hagedorn in 1982.

## Evidence:

(April 2025) Corner visited by R. Ellis of the U.S. Forest Service Columbia Land Zone and finds a 2" aluminum cap on 2" aluminum pipe, 6" above the ground. A small creek lies approximately 2' to the west of the corner. The following bearing references were recovered:

30" Alder, S11°E, 11.6' distance with visible bark scribe "1/4S24BT".

18" Alder, N2°E, 44.8' distance with visible bark scribe "1/4S24BT".

## Perpetuation:

Painted 6" red bands around existing bearing trees. Set aluminum guard post with land survey monument and property boundary signs attached 5' south of monument.

LAND CORNER RECORD ATTACHMENT

CORNER INFORMATION: DISCUSS THE HISTORY, EVIDENCE FOUND, AND PERPETUATION OF THE CORNER. SHOW THE REFERENCES; PROVIDE THE DATE OF THE FIELD WORK; IF APPLICABLE, MAKE REFERENCE TO A MAP OF RECORD AND/OR THE FIELD BOOK/PAGE NO. USE ADDITIONAL SHEETS AS NEEDED.

