

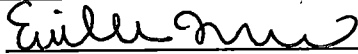
RETURN TO:  
Erielle Lamb  
987 McClellan Rd  
Vancouver, WA  
98661

LAND CORNER RECORD

THIS FORM IS FOR RECORDING A PLSS CORNER MONUMENT AND ACCESSORY INFORMATION WHEN A RECORD OF SURVEY IS NOT REQUIRED, PER RCW 58.09.040(2). (UPDATED 8/01/2019. DO NOT REVISE THIS FORM)

CERTIFICATE: THIS LAND CORNER RECORD CORRECTLY REPRESENTS WORK PERFORMED BY ME OR UNDER MY DIRECTION IN CONFORMANCE WITH THE SURVEY RECORDING ACT.

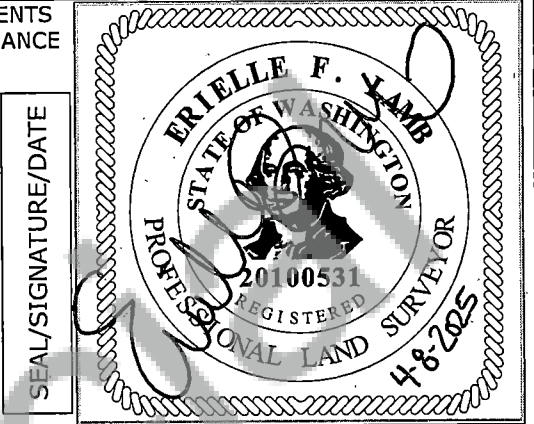
GRANTOR: Erielle Lamb  
NAME: \_\_\_\_\_

SIGNATURE: 

CERTIFICATE NO.: 20100531

ADDRESS: 987 McClellan Rd  
Vancouver, WA 98661

GRANTEE: PUBLIC



INDEXING INFORMATION: 1/4 \_\_\_\_\_ 1/4 \_\_\_\_\_ SEC: 12 TWP: 4N RGE: 4E

CORNER CODE, SEE DIAGRAM BELOW: G-25

ADDITIONAL IDENTIFIER: (PLSS CORNER NAME) East Quarter Corner of S12 Only

WPCS: N: 191200 E: 1194620

ZONE: WA South NAD83(2011) DATE OF OBSERVATION: 3/19/2025

BLM GCDB POINT IDENTIFIER (OPTIONAL): 700540

PROVIDE THE FOLLOWING INFORMATION ON ATTACHMENTS, AS REQUIRED BY RCW 58.09.060(2)

- (a) AN ACCURATE DESCRIPTION AND LOCATION, IN REFERENCE TO THE CORNER POSITION, OF ALL MONUMENTS AND ACCESSORIES FOUND AT THE CORNER;
- (b) AN ACCURATE DESCRIPTION AND LOCATION, IN REFERENCE TO THE CORNER POSITION, OF ALL MONUMENTS AND ACCESSORIES PLACED OR REPLACED AT THE CORNER;
- (c) BASIS OF BEARINGS USED TO DESCRIBE OR LOCATE SUCH MONUMENTS OR ACCESSORIES;
- (d) COROLLARY INFORMATION THAT MAY BE HELPFUL TO RELOCATE OR IDENTIFY THE CORNER POSITION.

	1	2	3	4	5	6	7	8	9	10	11	12	13	14	15	16	17	18	19	20	21	22	23	24	25	
A																										A
B																										B
C																										C
D																										D
E																										E
F																										F
G																										G
H																										H
J																										J
K																										K
L																										L
M																										M
N																										N
O																										O
P																										P
Q																										Q
R																										R
S																										S
T																										T
U																										U
V																										V
W																										W
X																										X
Y																										Y
Z																										Z
	1	2	3	4	5	6	7	8	9	10	11	12	13	14	15	16	17	18	19	20	21	22	23	24	25	

# LAND CORNER RECORD ATTACHMENT

**CORNER INFORMATION:** DISCUSS THE HISTORY, EVIDENCE FOUND, AND PERPETUATION OF THE CORNER. SHOW THE REFERENCES; PROVIDE THE DATE OF THE FIELD WORK; IF APPLICABLE, MAKE REFERENCE TO A MAP OF RECORD AND/OR THE FIELD BOOK/PAGE NO. USE ADDITIONAL SHEETS AS NEEDED.

## History:

(1897) Surveyor C. A. Homan, under contract #415 with the GLO, in October 1897, set a fir post 4 feet long, 4 inches square, 20 inches in the ground, marked "1/4 S" on West face, from which the following references were taken:  
A 15" fir, S38°E, 37 links distance, scribed "1/4 S BT"  
An 18" fir, N11°W, 45 links distance, scribed "1/4 S BT"

(1934) Corner recovered by USFS. Set 3"x3" cedar post and 1 inch iron pipe.

(1983) Corner recovered by Archie B. Carpenter, for Weyerhaeuser Company, on April 29, 1983, on file with Clark County as Book 16, Page 117 and Land Corner Record with Skamania County. Found post and 1 inch pipe as set in 1934. Set 2-1/2 inch aluminum pipe and cap, at post position, "stamped with appropriate corner marks, year and LS 16196", mounded stone around monument. The following references were found:

A 14" fir, N50°W, 24.0' distance.

Remains of a 15" fir, S38°E, 24.24' distance

Remains of a 24" fir, N11°W, 30.0' distance

The following references were taken:

A 9-1/2" fir, S66°E, 11.67' distance, marked "RM BT"

A 10-1/2" W. Fir, South, 2.2' distance, marked "RM"

A 9" Fir, N38°W, 6.33' distance to 16D nail on side of tree at center, marked "1/4 S BT"

(2018) Philip Gustin visited corner in 2018 for Weyerhaeuser Company, on file with Clark County as Book 67, Page 146. Found 2-1/2 inch stamped aluminum cap on a 2-1/2 inch aluminum pipe, with carsonite post 2 feet to the South.

The following references were found:

A 19" Fir, N38°W, 5.3' distance, with healed face and tag

A 22" Fir, S66°E, 11.7' distance, with healed face and tag

Set a T-Post, North, 3.0' distance, with tag

## Evidence:

(2025) E. Lamb of USDA Forest Service, Columbia Land Zone, on 3/19/2025, recovered corner monument. Found a 2-1/2 inch <sup>Aluminum</sup> brass cap on a 2 inch iron pipe, 6 inches above ground, as set in 1983. The following references were found:

22" Douglas Fir, S66°E, 11.67' distance, with healed blaze

21" Douglas Fir, N38°W, 6.33' distance, with healed blaze

27" Douglas Fir, South, 2.20' distance, with healed blaze

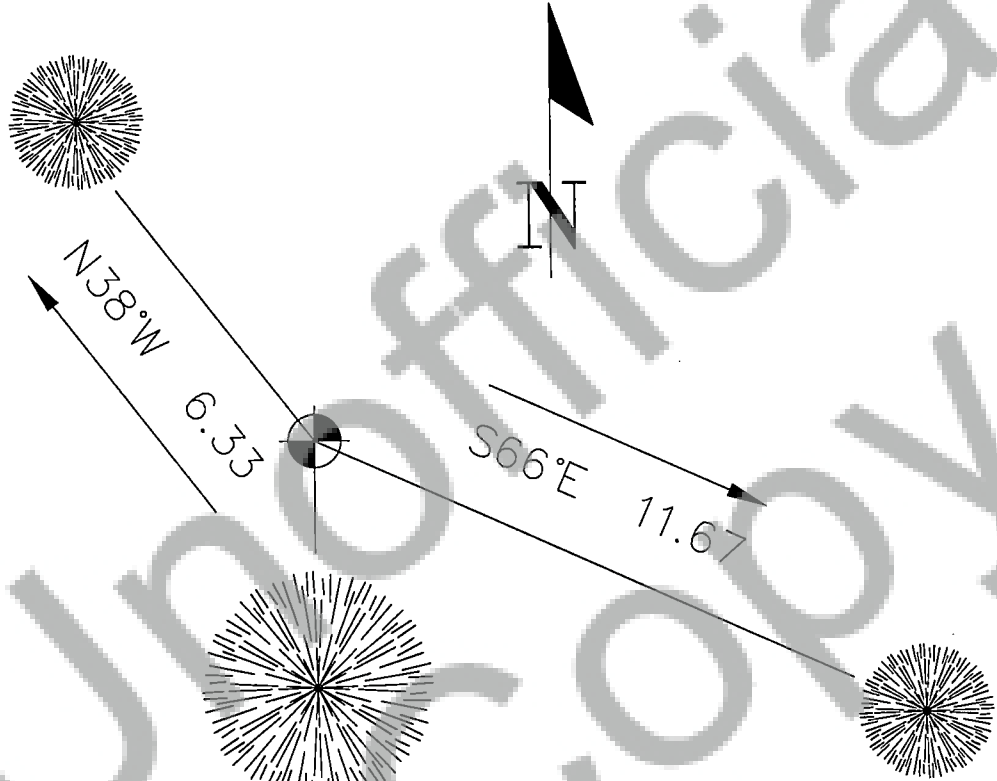
## Perpetuation:

Painted 6" red rings around Bearing Trees, painted healed blazes red, added new Bearing Tree tags to trees. Tied flagging around monument.

LAND CORNER RECORD ATTACHMENT

CORNER INFORMATION: DISCUSS THE HISTORY, EVIDENCE FOUND, AND PERPETUATION OF THE CORNER. SHOW THE REFERENCES; PROVIDE THE DATE OF THE FIELD WORK; IF APPLICABLE, MAKE REFERENCE TO A MAP OF RECORD AND/OR THE FIELD BOOK/PAGE NO. USE ADDITIONAL SHEETS AS NEEDED.

21" Douglas Fir



South 2.2'  
27" Douglas Fir

22" Douglas Fir