



RETURN TO:
 Erielle Lamb
 987 McClellan Rd
 Vancouver, WA
 98661

LAND CORNER RECORD

THIS FORM IS FOR RECORDING A PLSS CORNER MONUMENT AND ACCESSORY INFORMATION WHEN A RECORD OF SURVEY IS NOT REQUIRED, PER RCW 58.09.040(2). (UPDATED 8/01/2019. DO NOT REVISE THIS FORM)

CERTIFICATE: THIS LAND CORNER RECORD CORRECTLY REPRESENTS WORK PERFORMED BY ME OR UNDER MY DIRECTION IN CONFORMANCE WITH THE SURVEY RECORDING ACT.

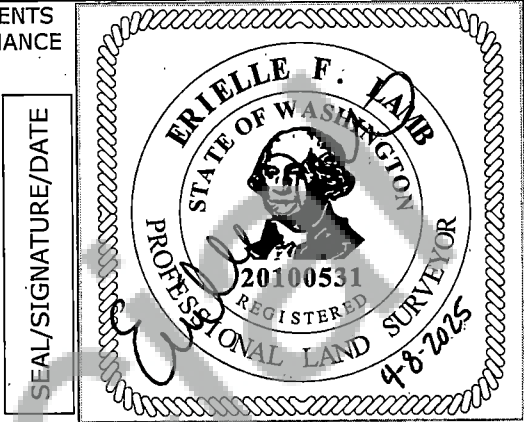
GRANTOR: Erielle Lamb
NAME: _____

SIGNATURE: Erielle Lamb

CERTIFICATE NO.: 20100531

ADDRESS: 987 McClellan Rd
 Vancouver, WA 98661

GRANTEE: PUBLIC



INDEXING INFORMATION: 1/4 _____ 1/4 _____ SEC: 1 & 12 TWP: 4N RGE: 4E

CORNER CODE, SEE DIAGRAM BELOW: E-25

ADDITIONAL IDENTIFIER: (PLSS CORNER NAME) Section Corner of S1 & S12 Only

WPCS: N: 193837 E: 1194702

ZONE: WA South NAD83(2011) **DATE OF OBSERVATION:** 3/19/2025

BLM GCDB POINT IDENTIFIER (OPTIONAL): 700600

PROVIDE THE FOLLOWING INFORMATION ON ATTACHMENTS, AS REQUIRED BY RCW 58.09.060(2)

- (a) AN ACCURATE DESCRIPTION AND LOCATION, IN REFERENCE TO THE CORNER POSITION, OF ALL MONUMENTS AND ACCESSORIES FOUND AT THE CORNER;
- (b) AN ACCURATE DESCRIPTION AND LOCATION, IN REFERENCE TO THE CORNER POSITION, OF ALL MONUMENTS AND ACCESSORIES PLACED OR REPLACED AT THE CORNER;
- (c) BASIS OF BEARINGS USED TO DESCRIBE OR LOCATE SUCH MONUMENTS OR ACCESSORIES;
- (d) COROLLARY INFORMATION THAT MAY BE HELPFUL TO RELOCATE OR IDENTIFY THE CORNER POSITION.

	1	2	3	4	5	6	7	8	9	10	11	12	13	14	15	16	17	18	19	20	21	22	23	24	25
A																									
B																									
C		6																							
D																									
E																									
F																									
G																									
H																									
J																									
K																									
L																									
M																									
N																									
O																									
P																									
Q																									
R																									
S																									
T																									
U																									
V																									
W																									
X																									
Y																									
Z																									
	1	2	3	4	5	6	7	8	9	10	11	12	13	14	15	16	17	18	19	20	21	22	23	24	25

LAND CORNER RECORD ATTACHMENT

CORNER INFORMATION: DISCUSS THE HISTORY, EVIDENCE FOUND, AND PERPETUATION OF THE CORNER. SHOW THE REFERENCES; PROVIDE THE DATE OF THE FIELD WORK; IF APPLICABLE, MAKE REFERENCE TO A MAP OF RECORD AND/OR THE FIELD BOOK/PAGE NO. USE ADDITIONAL SHEETS AS NEEDED.

History:

(1897) Surveyor C. A. Homan, under contract #415 with the GLO, on October 19th 1897, set a fir post 4 feet long, 5 inches square, 20 inches in the ground, marked, "T4N S6" on Northeast side, "R5E S7" on Southeast side, "S12" on Southwest side, and "R4E S1" on the Northwest side, with 5 notches on the South and 1 notch on the North. The following references were set:

A 36" fir, N72°E, 58 links distance, scribed "T4N R5E S6 BT"

A 22" hemlock, S27°E, 77 links distance, scribed "T4N R5E S7 BT"

A 9" vine maple, S21°W, 27 links distance, scribed "T4N R4E S12 BT"

An 18" hemlock, N68°W, 63 links distance, scribed "T4N R4E S1 BT"

(1934) Corner visited in 1934 by USFS, as noted in 1983 Carpenter. Found 4"x4" cedar post and a 3/4 inch iron pipe. Also found were the following references:

A 14" fir, N45°W, 41.8' distance

An 8" fir, S9°W, 15.8' distance

A 12" fir, N31°30'E, 12.5' distance

(1966) Corner visited by Cadastral Surveyor James E. Jelley, under contract #231 with the GLO, in July 1966. Found cedar post, 3 inches square, 8 inches above ground, with scribe marks visible but illegible on the East side. Also found is a 3/4 inch diameter iron pipe alongside post. Set an iron post, 28 inches long, 2 1/2 inches diameter, 24 inches in the ground, with brass cap marked "T4N S1 S12 R4E T4N R5E S7 1966", corner material was deposited alongside. The following references were found:

A 19" sawed fir stump, N72°E, 61 links distance

An 18" fir stub, N31°E, 19 links distance, with "T4N R5E S7" visible on partially healed blaze

A 9" fir stub, S13°W, 24 links distance, with "T4N R4E S12" visible on partially healed blaze

A 19" fir, N42°30'W, 63 1/2 links distance, with healed blaze.

From the brass cap the following reference was taken:

A 20" fir, S45°W, 61 links distance, scribed "T4N R4E S12 BT"

(1983) Corner recovered by Licensed Surveyor A.B. Carpenter, with Weyerhaeuser, in August 1983. Found 1966 BLM brass cap monument and the following references:

A 24" fir stub, N31°E, 19 links distance, visible marks. (Noted as "USFS 1934 BT")

A 26" fir, N42°W, 63 links distance, with healed face. (Noted as "USFS 1934 BT")

A 26" fir, S45°W, 61 links distance, with healed face. (Noted as 1966 BLM BT)

Evidence:

(2025) E. Lamb of USDA Forest Service, Columbia Land Zone, on 3/19/2025, recovered corner monument. Found a 3 inch brass cap on a 2 inch iron pipe, 3 inches above ground, as set in 1966. Alongside which a 1 inch iron pipe was found to the West, and a T-Post to the Northeast. The following references were found:

A dead and rotting stump, N31°E, 19 links distance, with visible scribing

A dead stump, N45°W, 63 links distance, with open blaze

A dead and down log, S45°W, 61 links distance, with open blaze

Perpetuation:

Set a 5/8 inch rebar, with a pink plastic cap, "WA PLS 20100531", flush with ground, N45° W, 6.35' distance. Aluminum guard post with Land Survey Monument and Bearing Tree tag set behind rebar.

Set a 5/8 inch rebar, with a pink plastic cap, "WA PLS 20100531", flush with ground, S75° W, 4' distance. Aluminum guard post with Land Survey Monument and Bearing Tree tag set behind rebar.

LAND CORNER RECORD ATTACHMENT

CORNER INFORMATION: DISCUSS THE HISTORY, EVIDENCE FOUND, AND PERPETUATION OF THE CORNER. SHOW THE REFERENCES; PROVIDE THE DATE OF THE FIELD WORK; IF APPLICABLE, MAKE REFERENCE TO A MAP OF RECORD AND/OR THE FIELD BOOK/PAGE NO. USE ADDITIONAL SHEETS AS NEEDED.

