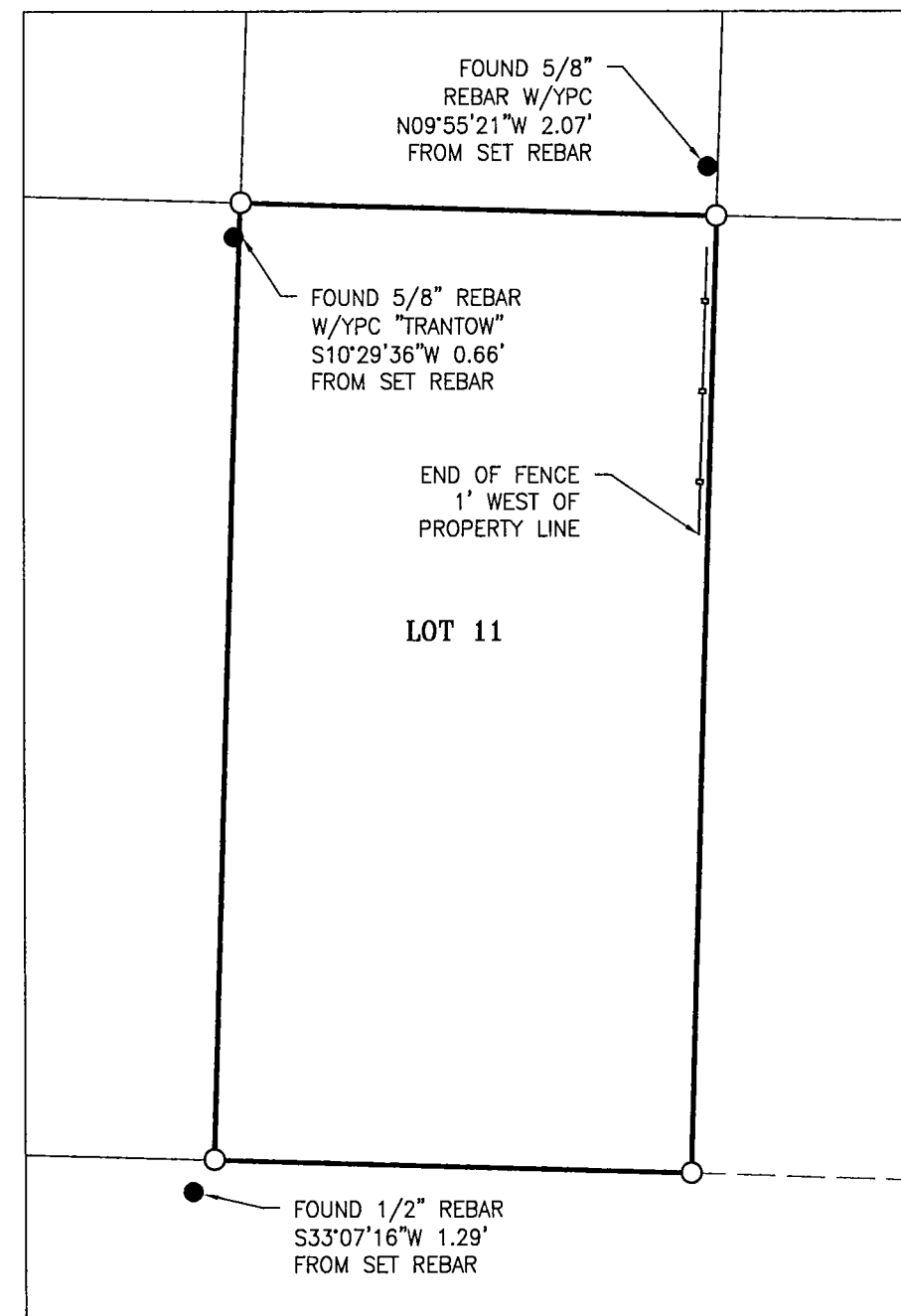


# RECORD OF SURVEY

LOT 11 OF JOHNSON'S ADDITION  
LOCATED IN THE SOUTHWEST 1/4 OF THE SOUTHEAST 1/4  
OF SECTION 36  
TOWNSHIP 3 NORTH, RANGE 7 EAST  
WILLAMETTE MERIDIAN  
SKAMANIA COUNTY, WASHINGTON  
MARCH 2025



DETAIL A  
NOT TO SCALE

## LEGEND

- FOUND MONUMENT, AS NOTED (FOUND FEBRUARY 2025)
- FOUND MONUMENT, AS NOTED (FOUND FEBRUARY 2025)
- ⦿ FOUND MONUMENT, AS NOTED (FOUND FEBRUARY 2025)
- SET 1/2" X 24" REBAR W/YPC STAMPED "SCOTT 46624" (SET FEBRUARY 2025)
- W/YPC WITH YELLOW PLASTIC CAP
- W/RPC WITH RED PLASTIC CAP
- ROS RECORD OF SURVEY
- AFN AUDITOR'S FILE NUMBER
- SQ. FT. SQUARE FEET
- ( ) ( ) RECORD/DEED INFO
- SQ. FT. SQUARE FEET
- 6' WOOD FENCE
- CONCRETE SIDEWALK

## SURVEYOR'S NOTE

NO MONUMENTS WHICH APPEAR TO BE FROM THE ORIGINAL PLAT OF JOHNSON'S ADDITION WERE LOCATED IN BLOCK 3 DURING THIS SURVEY. A TYPICAL RESOLUTION FOR A LOT AND BLOCK SURVEY IS BASED ON PROPORTION BETWEEN FOUND PLAT MONUMENTS.

A PREVIOUS SURVEY TRANTOW (BK. 3, PG. 204) APPEARS TO USE A PROPORTIONATE SOLUTION, BUT IT'S UNCLEAR FROM THAT SURVEY WHAT HE HELD TO DO SO AND TRANTOW'S MONUMENTS WERE NOT ACCEPTED.

AN ATTEMPT WAS MADE TO USE PLAT DATA FROM THE SOUTH LINE OF SECTION 26 AND THE WEST LINE OF THE SHEPARD DLC, BUT THIS RESOLUTION DID NOT FIT FOUND MONUMENTS AND POSSESSION LINES.

A 1995 SURVEY BY WYEAST (BOOK 3, PG. 183) HELD PLAT DIMENSIONS FOR THEIR SOLUTION, AND IN THE ABSENCE OF RELIABLE PLAT MONUMENTS, I FOLLOWED THIS SAME METHODOLOGY USING THE WYEAST MONUMENTS FOR THE SOLUTION SHOWN HERE.

## SURVEY REFERENCES

- (S1) TERRA SURVEYING, AFN: 2009173629, JUNE 2009
- (S2) WYEAST SURVEYS, BK 3 PG 183, FEBRUARY 1995
- (S3) TRANTOW, BK 3 PG 204, NOVEMBER 1995
- (S4) JOHNSON'S ADDITION PLAT, BK A PG 24, DECEMBER 1909

## DEED REFERENCES

GRANTOR: KYLAN J. MCKENZIE  
GRANTEE: KYLAN J. MCKENZIE AND GISELLE E. MCKENZIE  
DATE: MAY 6, 2013  
AF# 2013-000953

## LEGAL DESCRIPTION

LOT 11 OF BLK 3 JOHNSON'S ADDITION BK A/PG 25

## BASIS OF BEARINGS

BASIS OF BEARINGS IS N63°01'38"E, BETWEEN A FOUND 5/8" REBAR WITH YELLOW PLASTIC CAP "WYEAST" (POINT "A") AND A FOUND 5/8" REBAR WITH YELLOW PLASTIC CAP "WYEAST" (POINT "B").

## PROCEDURE

FIELD TIES WERE MADE WITH A TRIMBLE S5, 3 SECOND ROBOTIC TOTAL STATION. FIELD TRAVERSES MET THE MINIMUM STANDARD AS SET FORTH IN WAS 332-130-080.

## NARRATIVE

THE PURPOSE OF THIS SURVEY IS TO MONUMENT AND DELINEATE THE BOUNDARY OF LOT 11 OF JOHNSON ADDITION PLAT, RECORDED IN BOOK A, PAGE 24, SKAMANIA COUNTY, RECORDS WASHINGTON.

## SURVEYOR'S CERTIFICATE

THIS MAP CORRECTLY REPRESENTS A SURVEY MADE BY ME OR UNDER MY DIRECTION IN CONFORMANCE WITH THE REQUIREMENTS OF THE SURVEY RECORDING ACT AT THE REQUEST OF THOMAS STOCKLIN-ENRIGHT IN FEBRUARY, 2025.

*Patrick J. Scott* 4-15-2025  
PAT J. SCOTT PLS NO. 46624 DATE



## AUDITOR'S CERTIFICATE

FILED FOR RECORD THIS 21 DAY OF April, 2025  
AT 4:53 PM, IN AUDITOR'S FILE NO. 2025-000542 AT THE  
REQUEST OF MACKAY SPOSITO, INC.  
*Glen M.*  
DEPUTY/COUNTY AUDITOR

**MacKay Sposito**  
ENERGY PUBLIC WORKS LAND DEVELOPMENT  
www.mackaysposito.com

18405 SE MILL PLAIN BLVD., SUITE 100  
VANCOUVER, WA 98683  
PHONE: (360) 695-3411

CALC BY: ESC  
CHECKED BY: PJS

DRAWN BY: SAG  
FILE: 18747\_ROS\_RECOVER.DWG

JOB NO.: 18747  
SHEET 1 OF 1