

NARRATIVE

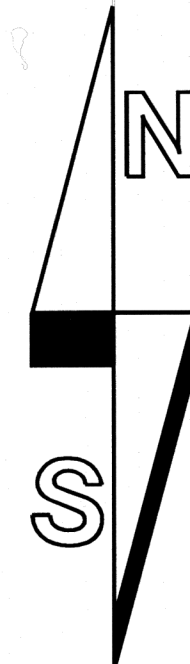
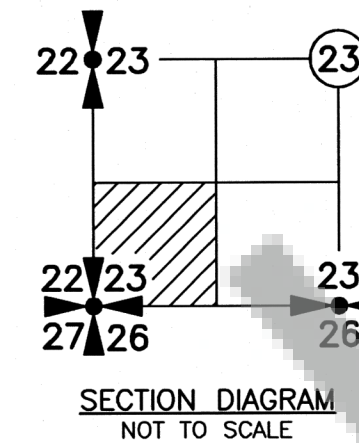
THE PURPOSE OF THIS SURVEY WAS TO POST THE LINES SHOWN AS MARKED FOR THE "PACIFIC POWER AND LIGHT COMPANY TRACT" CITED AT THE REQUEST OF PACIFICORP. CONTROLLING CORNERS SHOWN WERE TIED BY CONVENTIONAL TRAVERSE METHODS ORIGINATING FROM NEARBY "RTK GPS" POINTS. THE GPS POINTS WERE COLLECTED ON "WASHINGTON STATE PLANE COORDINATE SYSTEM, SOUTH ZONE" (NAD 83/2011) WHICH WAS THE BASIS OF BEARING FOR THIS SURVEY. A TRAVERSE WAS THEN RUN ALONG THE LINES SHOWN AS MARKED BEGINNING AND ENDING ON SAID GPS POINTS. OTHER CORNERS SHOWN WERE TIED RADIALLY FROM THE ABOVE DESCRIBED TRAVERSE. DISTANCES SHOWN ARE GRID DISTANCES. TO OBTAIN GROUND DISTANCES, DIVIDE DISTANCES SHOWN BY THE COMBINED SCALE FACTOR OF 0.99989369.

DEED REFERENCE

WARRANTY DEED
WEYERHAEUSER COMPANY
TO
PACIFIC POWER & LIGHT COMPANY
BOOK 48, PAGE 352
(3-2-1961)

RECORD OF SURVEY

IN THE SW 1/4 SW 1/4 OF
SECTION 23, T7N, R5E, W.M.
SKAMANIA COUNTY, WA.

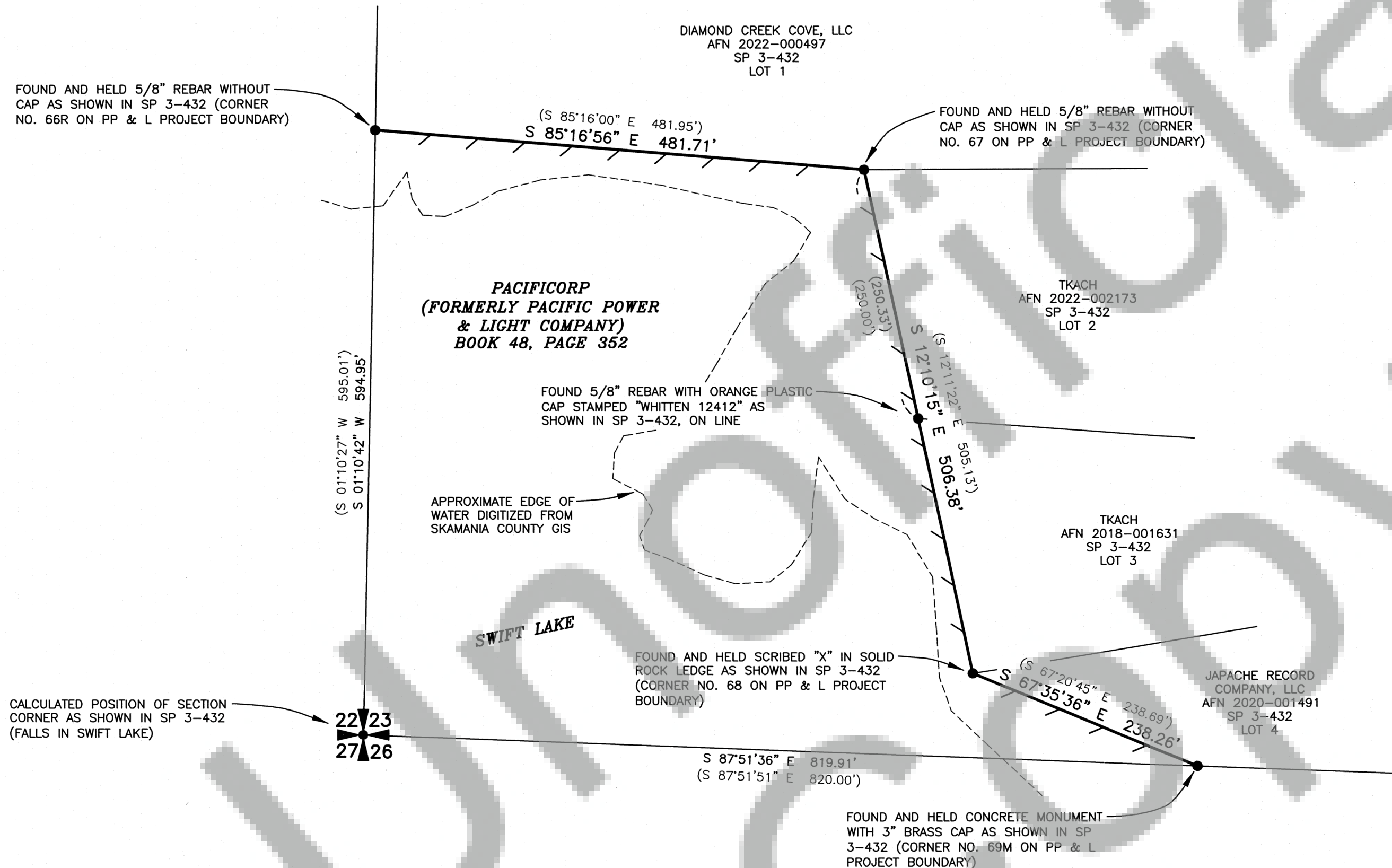


BEARINGS ARE
NAD 83/2011 BASED ON
GPS OBSERVATIONS
(SEE NARRATIVE)

100 50 0 100 150 200
SCALE 1 INCH = 100 FEET

LEGEND:

- INDICATES MONUMENT FOUND AS NOTED
- () INDICATES RECORD INFORMATION PER SP 3-432
- INDICATES LINE MARKED WITH 6' CARSONITE POST WITH "PACIFICORP PROPERTY BOUNDARY" STICKER ATTACHED
- SP SHORT PLAT
- AFN AUDITOR'S FILE NUMBER
- GPS GLOBAL POSITIONING SYSTEM
- RTK REAL TIME KINEMATIC
- PP & L PACIFIC POWER & LIGHT



4-15-2025

SURVEYOR'S CERTIFICATE

THIS MAP CORRECTLY REPRESENTS A SURVEY MADE BY ME OR UNDER MY DIRECTION IN CONFORMANCE WITH THE REQUIREMENTS OF THE SURVEY RECORDING ACT AT THE REQUEST OF PACIFICORP IN FEBRUARY, 2025.

Gregory A. Brown 4/15/2025
GREGORY A. BROWN, PROFESSIONAL LAND SURVEYOR, LS# 42425

AUDITOR'S CERTIFICATE

FILED FOR RECORD THIS 21st DAY OF April 2025 AT
10:32 A.M. IN BOOK 2025-000537 OF SURVEYS AT PAGE 1
AT THE REQUEST OF BROWN SURVEYING, PLLC.
AUDITOR'S FILE NUMBER 2025-000537

DEPUTY COUNTY AUDITOR

BROWN SURVEYING, PLLC MAKES NO WARRANTIES AS TO MATTERS OF UNWRITTEN TITLE SUCH AS ADVERSE POSSESSION, ACQUIESCENCE, ESTOPPLE, ETC.

A FIELD TRAVERSE WAS PERFORMED USING A NIKON NIVO 3.0C THREE SECOND TOTAL STATION WITH TDS DATA COLLECTION SYSTEM. THE FIELD TRAVERSE MET THE MINIMUM STANDARDS FOR SURVEYS AS DESIGNATED IN WAC 332-130-090. ALL CORNERS NOTED AS FOUND WERE VISITED ON 4/3/2025.

SCALE: 1"=100'
JOB NO. 25-010
DATE: 4-15-2025
CALC BY: GAB
DRAWN BY: GAB
CHECKED BY: GAB
SHEET 1 OF 1

BROWN
SURVEYING PLLC

PO BOX 414
AMBOY, WA 98601
360-600-0846
ebrownsurveying@gmail.com