



RETURN TO:

Erielle Lamb
987 McClellan Rd
Vancouver, WA
98661

LAND CORNER RECORD

PER RCW 58.09.040(2), RCW 58.09.060(2) AND WAC 332-130-030(4)

PAGE 1 OF 4

THIS FORM IS FOR RECORDING A PLSS CORNER MONUMENT AND ACCESSORY INFORMATION WHEN A RECORD OF SURVEY IS NOT REQUIRED, PER RCW 58.09.040(2). DO NOT ALTER THIS FORM. (FORM UPDATED 9/01/2024)

AUDITOR'S CERTIFICATE: FILED THIS _____ DAY OF _____, (YEAR) _____

AT _____ M, IN BOOK _____ OF _____ AT PAGE _____ AT THE REQUEST OF

_____, AFN _____ (SIGNED) _____

COUNTY AUDITOR

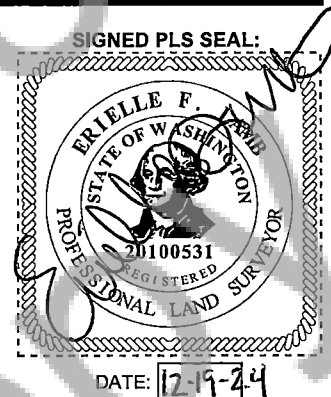
SURVEYOR'S CERTIFICATE: THIS LAND CORNER RECORD CORRECTLY REPRESENTS WORK PERFORMED BY ME OR UNDER MY DIRECTION IN CONFORMANCE WITH THE SURVEY RECORDING ACT, RCW 58.09.040(2).

SIGNATURE: Erielle Lamb CERT. #: 20100531

GRANTOR:

NAME: Erielle Lamb
CONTACT: _____
ADDRESS: 987 McClellan Rd Vancouver WA, 98661
ADDRESS: _____

GRANTEE: PUBLIC



INDEXING:

☐ 1/4 OF THE ☐ 1/4 S: ☐ 16, 21 T: ☐ 3 R: ☐ 9 ☐ W ☒ E COUNTY: Skamania

CORNER CODE (SEE DIAGRAM, PAGE 2): N-11

PLSS CORNER NAME: 1/4 of S16 & S21 BLM GCDB POINT ID (OPTIONAL): 340400

USE THE DIAGRAM ON PAGE 2 TO DETERMINE THE CORNER CODE.

FOR CORNERS AT THE INTERSECTION OF TWO LINES, THE CORNER CODE IS THE ALPHANUMERIC COORDINATE THAT CORRESPONDS TO THE APPROPRIATE INTERSECTION OF LINES.

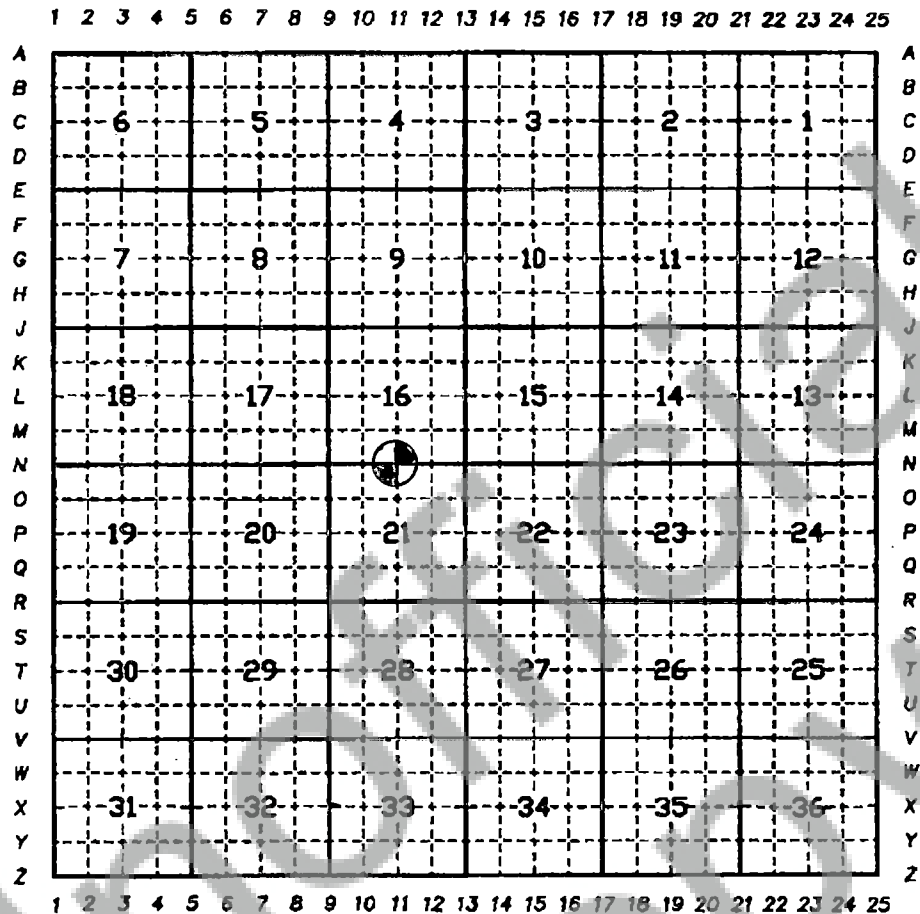
FOR CORNERS THAT ARE ONLY ON ONE LINE, THE CORNER CODE IS THE LINE DESIGNATION AND THE RELATED LINE SEGMENT; E.G., A CORNER ON LINE 5 BETWEEN "B" AND "C" IS DESIGNATED BC-5.

FOR CORNERS THAT ARE BETWEEN LINES, THE CORNER CODE IS BOTH LINE SEGMENTS; E.G., A CORNER IN THE SE1/4 OF THE SE1/4 OF SECTION 18 IS DESIGNATED MN 4-5.

LAND CORNER RECORD

PAGE 2 OF 4

MARK THE LOCATION OF THE MONUMENT ON THE DIAGRAM, BELOW, THEN, FILL IN THE "CORNER CODE" BLANK ON PAGE 1.



PROVIDE AN ACCURATE DESCRIPTION AND LOCATION, IN REFERENCE TO THE CORNER POSITION, OF ALL MONUMENTS AND ACCESSORIES FOUND, SET, OR RE-SET AT THE CORNER, THE BASIS OF BEARINGS USED, AND ANY HELPFUL COROLLARY INFORMATION:

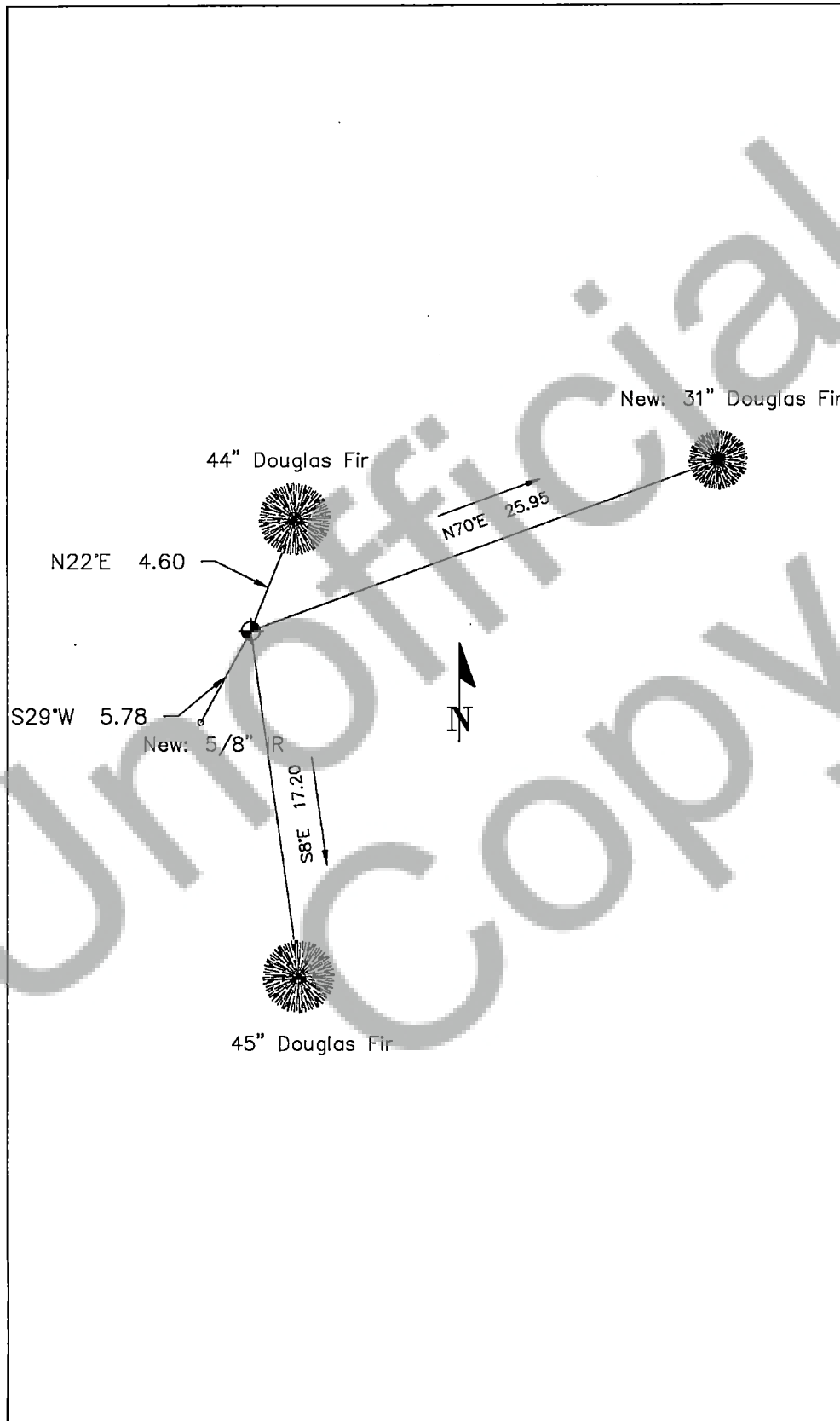
(2024) R. Ellis of the U.S. Forest Service, Columbia Land Zone recovered the 1/4 corner of sections 16 & 21 of T3N R9E as reset by LS#18731 Roy O. Gaylord in 1995 during a survey for the U.S. Forest Service that was not filed with Skamania County. Monument is a 3-1/4" USDA Forest Service aluminum cap on 2-1/2" aluminum pipe, 1/2" above the ground in a collar of stone. The following references were recovered:
45" Douglas Fir, S8°E, 17.2' (27 links).
44" Douglas Fir, N22°E, 4.6' (9 links) with large rotted & open face.

Perpetuation:

31" Douglas Fir, N70°E, 25.95', scribed "1/4S16BT", with 2" diameter brass washer marked "WALS#20100531" set right side center from the corner.
Set 5/8"x30" rebar, S29°W, 5.78' distance.

All rebar references are capped with a pink plastic cap marked "WALS#20100531" and an aluminum guard post with LSM and bearing tree tags attached and set behind reference cap and facing the monument. All new and existing bearing trees have 6" red bands painted around trees with LSM signs attached to the back and bearing tree tags attached above the scribe face.

PROVIDE A SKETCH OF ALL MONUMENTS AND ACCESSORIES FOUND, SET, OR RE-SET AT THE CORNER, AND ANY HELPFUL COROLLARY INFORMATION:



DISCUSS THE HISTORY, EVIDENCE FOUND, AND PERPETUATION OF THE CORNER. SHOW REFERENCES; PROVIDE THE DATE OF THE FIELD WORK; IF APPLICABLE, MAKE REFERENCE TO A MAP OF RECORD, PREVIOUS LAND CORNER RECORD, MONUMENT REMOVAL PERMIT, AND/OR FIELD BOOK AND PAGE NUMBER. USE ADDITIONAL ATTACHMENT SHEETS IF NEEDED.

(1880) Deputy Surveyor Lewis Shelton set 4"x4" Hemlock post, 4' long for the 1/4 corner of S16 & S21 of T3N R9E. The following references were taken:
24" Fir, N22°E, 9 links.
12" Fir, S8°E, 27 links.

(1939) Carl Berry licensed WA engineer conducted a survey for the BPA for the Bonneville-Coulee line access and noted finding bearing trees for the 1/4 corner of S16 & S21 of T3N R9E.

(1972) WA LS#9025 Jerry C. Olsen of the WA DNR reports finding a concrete monument and 2 bearing trees with scribing recorded in DNR map page 156.

(1985) WA LS#6228 George W. Drysdale of Barghausen Consulting Engineers Inc. reports finding a DNR concrete monument. Recorded in book 2, page 222, with Skamania County recording #100515.

(1995) Corner visited by LS#18731 Roy O. Gaylord of Terra Surveying for the U.S. Forest Service during the Augspurgen Cadastral Survey. A preliminary plat was made but never filed with Skamania County. The following references were noted:
Evidence:

Original 24" now 43" Douglas Fir, N22°E, 9 links, chopped out and overgrown.

Original 12" now 36" Douglas Fir, S8°E, 27 links.

Found Cedar hub and tack at corner location.

DNR said they set a monument but the corner is very difficult to hike into so it was never set.

Perpetuation:

Set 3-1/4" aluminum cap on 30" long aluminum pipe with magnet under cap based on wood hub and existing bearing trees. Placed stone mound around monument and set fiberglass sign post at corner.

(2023) Corner visited by WA LS#42680 Stephen Williams of David Evans and Associates. Found 3-1/4" U.S. Department of Agriculture Forest Service aluminum cap on 2" iron pipe flush with ground. Recorded with Skamania Co. AFN2023001145.