

RETURN TO:

Erielle Lamb
987 McClellan Rd.
Vancouver, WA
98661



LAND CORNER RECORD

PER RCW 58.09.040(2), RCW 58.09.060(2) AND WAC 332-130-030(4) PAGE 1 OF 4

THIS FORM IS FOR RECORDING A PLSS CORNER MONUMENT AND ACCESSORY INFORMATION WHEN A RECORD OF SURVEY IS NOT REQUIRED, PER RCW 58.09.040(2). DO NOT ALTER THIS FORM. (FORM UPDATED 9/01/2024)

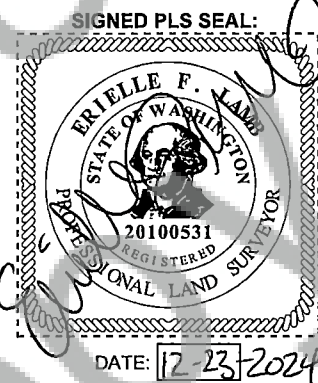
AUDITOR'S CERTIFICATE: FILED THIS _____ DAY OF _____, (YEAR) _____

AT _____ M, IN BOOK _____ OF _____ AT PAGE _____ AT THE REQUEST OF

_____. AFN _____ (SIGNED) _____ COUNTY AUDITOR

SURVEYOR'S CERTIFICATE: THIS LAND CORNER RECORD CORRECTLY REPRESENTS WORK PERFORMED BY ME OR UNDER MY DIRECTION IN CONFORMANCE WITH THE SURVEY RECORDING ACT, RCW 58.09.040(2).

SIGNATURE: *Erielle Lamb* CERT. #: 20100531



GRANTOR:

NAME: Erielle Lamb
CONTACT: _____
ADDRESS: 987 McClellan Rd, Vancouver WA, 98661
ADDRESS: _____

GRANTEE: PUBLIC

INDEXING:

1/4 OF THE 1/4 S: 15 & 16 T: 3 R: 9 W E COUNTY: Skamania

CORNER CODE (SEE DIAGRAM, PAGE 2): L-13

PLSS CORNER NAME: 1/4 of S15 & S16 BLM GCDB POINT ID (OPTIONAL): 400440

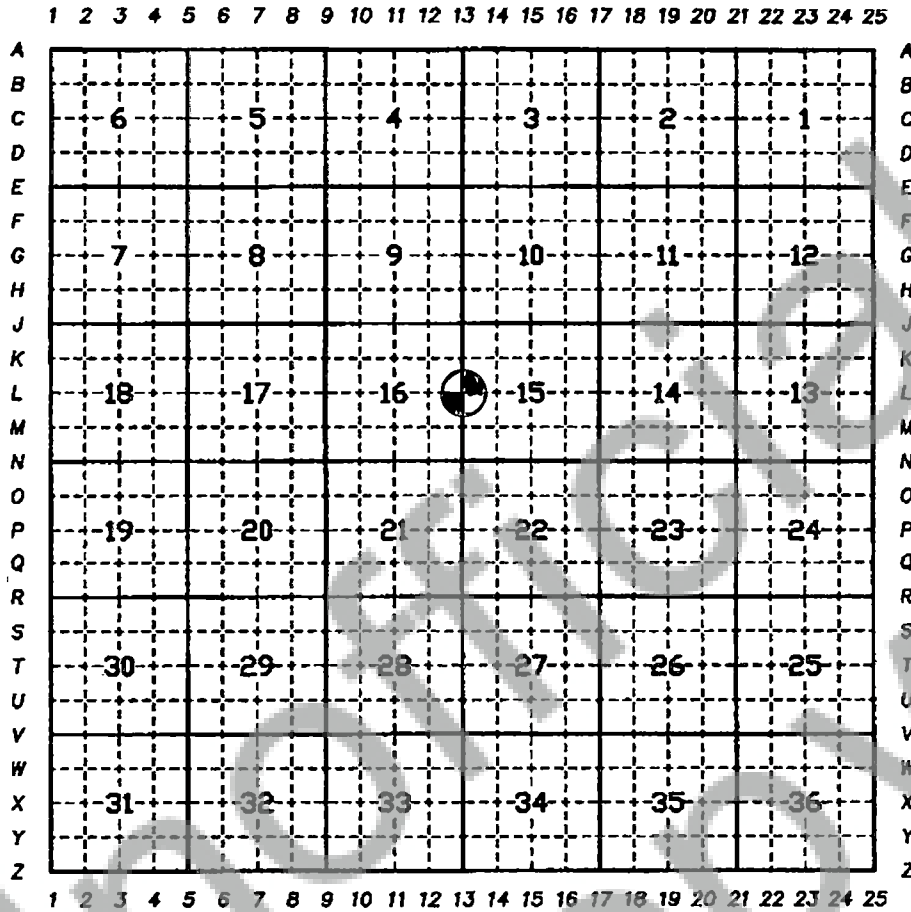
USE THE DIAGRAM ON PAGE 2 TO DETERMINE THE CORNER CODE.

FOR CORNERS AT THE INTERSECTION OF TWO LINES, THE CORNER CODE IS THE ALPHANUMERIC COORDINATE THAT CORRESPONDS TO THE APPROPRIATE INTERSECTION OF LINES.

FOR CORNERS THAT ARE ONLY ON ONE LINE, THE CORNER CODE IS THE LINE DESIGNATION AND THE RELATED LINE SEGMENT; E.G., A CORNER ON LINE 5 BETWEEN "B" AND "C" IS DESIGNATED BC-5.

FOR CORNERS THAT ARE BETWEEN LINES, THE CORNER CODE IS BOTH LINE SEGMENTS; E.G., A CORNER IN THE SE1/4 OF THE SE1/4 OF SECTION 18 IS DESIGNATED MN 4-5.

MARK THE LOCATION OF THE MONUMENT ON THE DIAGRAM, BELOW, THEN, FILL IN THE "CORNER CODE" BLANK ON PAGE 1.



PROVIDE AN ACCURATE DESCRIPTION AND LOCATION, IN REFERENCE TO THE CORNER POSITION, OF ALL MONUMENTS AND ACCESSORIES FOUND, SET, OR RE-SET AT THE CORNER, THE BASIS OF BEARINGS USED, AND ANY HELPFUL COROLLARY INFORMATION:

(2024) R. Ellis of the U.S. Forest Service, Columbia Land Zone recovered the 1/4 corner of S15 & S16 of T3N R9E as re-set by WA LS#18731 Roy O. Gaylord in 1989. Found 2-1/2" brass cap on iron pipe, 2" above the ground.

Evidence:

20" Douglas Fir, N10°W, 6.0' distance, with healed blaze facing east, 4' above the ground.

24" Douglas Fir, N69°E, 15.4' distance, with healed blaze.

19" Douglas Fir, S35°W, 5.1' distance, with healed blaze.

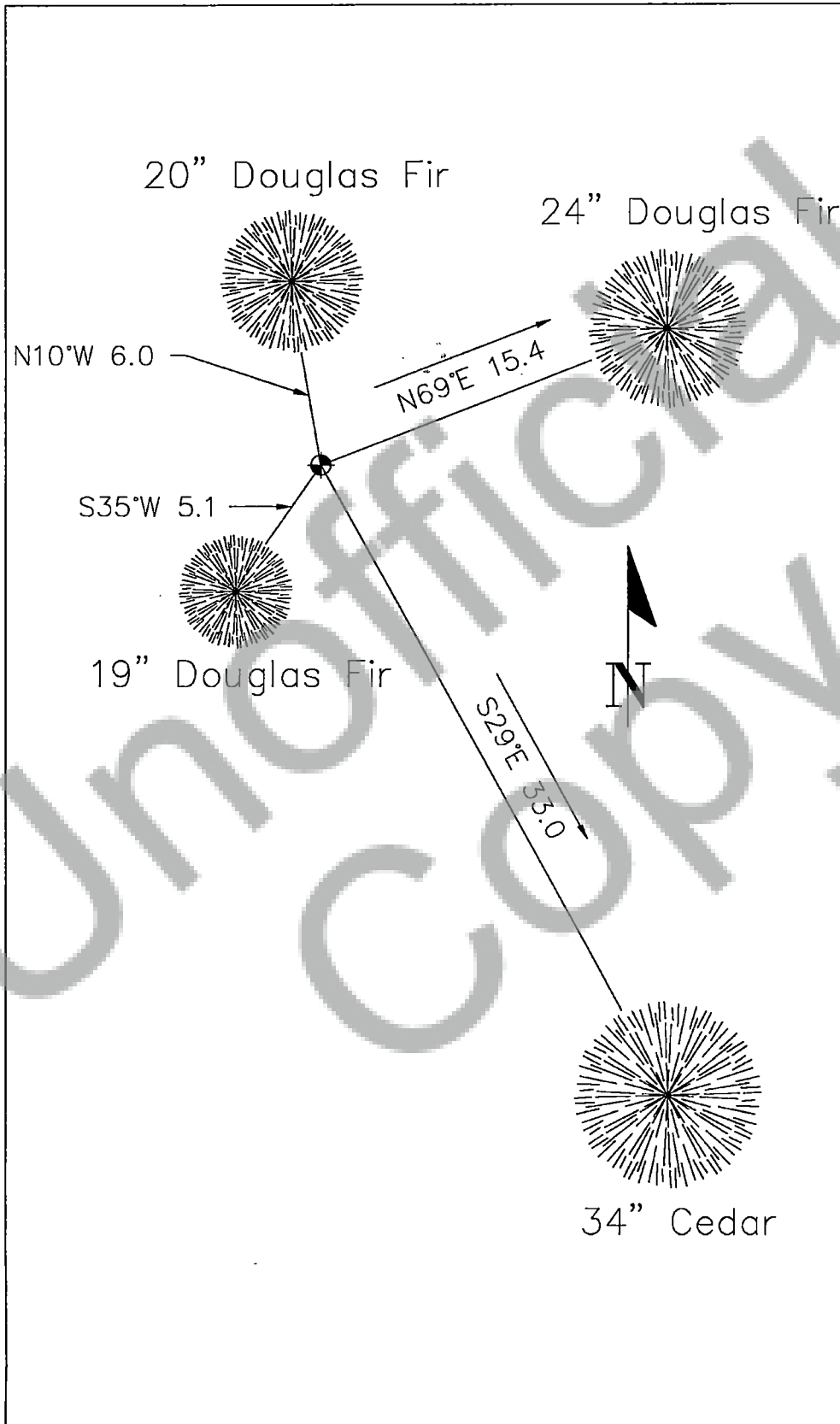
Douglas Fir Stob, 8' tall, N10°E.

Perpetuation:

34" Cedar, S29°E, 33.0' distance, measured to mag and 2" brass washer stamped "WALS20100531" left side center from the corner and scribed "1/4S15BT".

Painted 6" red bands around all new and exiting bearing trees. New land survey monument signs and bearing tree tags were placed on new bearing trees and old trees with tags missing or illegible.

PROVIDE A SKETCH OF ALL MONUMENTS AND ACCESSORIES FOUND, SET, OR RE-SET AT THE CORNER, AND ANY HELPFUL COROLLARY INFORMATION:



DISCUSS THE HISTORY, EVIDENCE FOUND, AND PERPETUATION OF THE CORNER. SHOW REFERENCES; PROVIDE THE DATE OF THE FIELD WORK; IF APPLICABLE, MAKE REFERENCE TO A MAP OF RECORD, PREVIOUS LAND CORNER RECORD, MONUMENT REMOVAL PERMIT, AND/OR FIELD BOOK AND PAGE NUMBER. USE ADDITIONAL ATTACHMENT SHEETS IF NEEDED.

(1880) Deputy Surveyor Lewis Shelton set 4"x4" dogwood post, 4' long for the 1/4 corner of S16, & S15 of T3N R9E. The following references were taken:
36" Fir, N63°E, 22 links.
12" Fir, N53°W, 23 links.

(1948) E. Dooley of the WA DNR found 1 snag bearing tree at the west 1/4 of S15. Corner info found in DNR records.

(1989) Corner re-established by WA LS#18731 Roy O. Gaylord in December 1989. Found perpetuated corner evidence but no record or who did the work. Record filed with Skamania County AFN109030.

Evidence:

20" Fir, N72°E, 15.5' distance, with upper & lower healed blaze.

17" Fir, S34°W, 5.6' distance, with upper & lower healed blaze.

Found squared Fir Post-Not GLO.

Found Stump Hole at northeast GLO call.

Perpetuation:

Set 2-3/8" Brass Cap.

(1995) Corner visited by WA LS#18731 Roy O. Gaylord of Terra Surveying during the Augspurger Cadastral Survey for the U.S. Forest Service. A preliminary plat was made but never filed with Skamania County. Information for the survey is held within Forest Service records. The following references were recorded:

Evidence:

Found 2-1/2" Brass Cap.

13" Douglas Fir, N10°E, 12.6', painted chop marks.

20" Douglas Fir, N69°E, 15.4', healed scribing.

16" Douglas Fir, S35°E, 5.9', healed scribing.

14" Douglas Fir, N10°W, 6.0'.

No stones were placed around monument. Set fiberglass sign post at corner.