

## RETURN TO:

Erielle Lamb  
987 McClellan Rd.  
Vancouver, WA  
98661



00020170202400018930040042

**LAND CORNER RECORD**

PER RCW 58.09.040(2), RCW 58.09.060(2) AND WAC 332-130-030(4)

PAGE 1 OF 4

THIS FORM IS FOR RECORDING A PLSS CORNER MONUMENT AND ACCESSORY INFORMATION WHEN A RECORD OF SURVEY IS NOT REQUIRED, PER RCW 58.09.040(2). DO NOT ALTER THIS FORM. (FORM UPDATED 9/01/2024)

**AUDITOR'S CERTIFICATE:** FILED THIS \_\_\_\_\_ DAY OF \_\_\_\_\_, (YEAR) \_\_\_\_\_

AT \_\_\_\_\_ M, IN BOOK \_\_\_\_\_ OF \_\_\_\_\_ AT PAGE \_\_\_\_\_ AT THE REQUEST OF \_\_\_\_\_

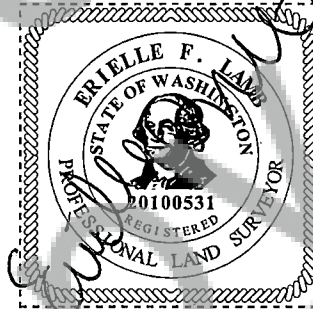
\_\_\_\_\_ AFN \_\_\_\_\_ (SIGNED) \_\_\_\_\_

COUNTY AUDITOR

**SURVEYOR'S CERTIFICATE:** THIS LAND CORNER RECORD CORRECTLY REPRESENTS WORK PERFORMED BY ME OR UNDER MY DIRECTION IN CONFORMANCE WITH THE SURVEY RECORDING ACT, RCW 58.09.040(2).

SIGNATURE: Erielle Lamb CERT. #: 20100531**GRANTOR:**

NAME: Erielle Lamb  
CONTACT: \_\_\_\_\_  
ADDRESS: 987 McClellan Rd. Vancouver, WA, 98661  
ADDRESS: \_\_\_\_\_

**SIGNED PLS SEAL:**DATE: 12-19-24**GRANTEE:** PUBLIC**INDEXING:**

☐ 1/4 OF THE ☐ 1/4 S: ☐ 16 T: ☐ 3 R: ☐ 9 ☐ W ☒ E COUNTY: Skamania

**CORNER CODE (SEE DIAGRAM, PAGE 2):** K-12121313PLSS CORNER NAME: C-E-E-NE 1/256 of S16 BLM GCDB POINT ID (OPTIONAL): \_\_\_\_\_**USE THE DIAGRAM ON PAGE 2 TO DETERMINE THE CORNER CODE.**

FOR CORNERS AT THE INTERSECTION OF TWO LINES, THE CORNER CODE IS THE ALPHANUMERIC COORDINATE THAT CORRESPONDS TO THE APPROPRIATE INTERSECTION OF LINES.

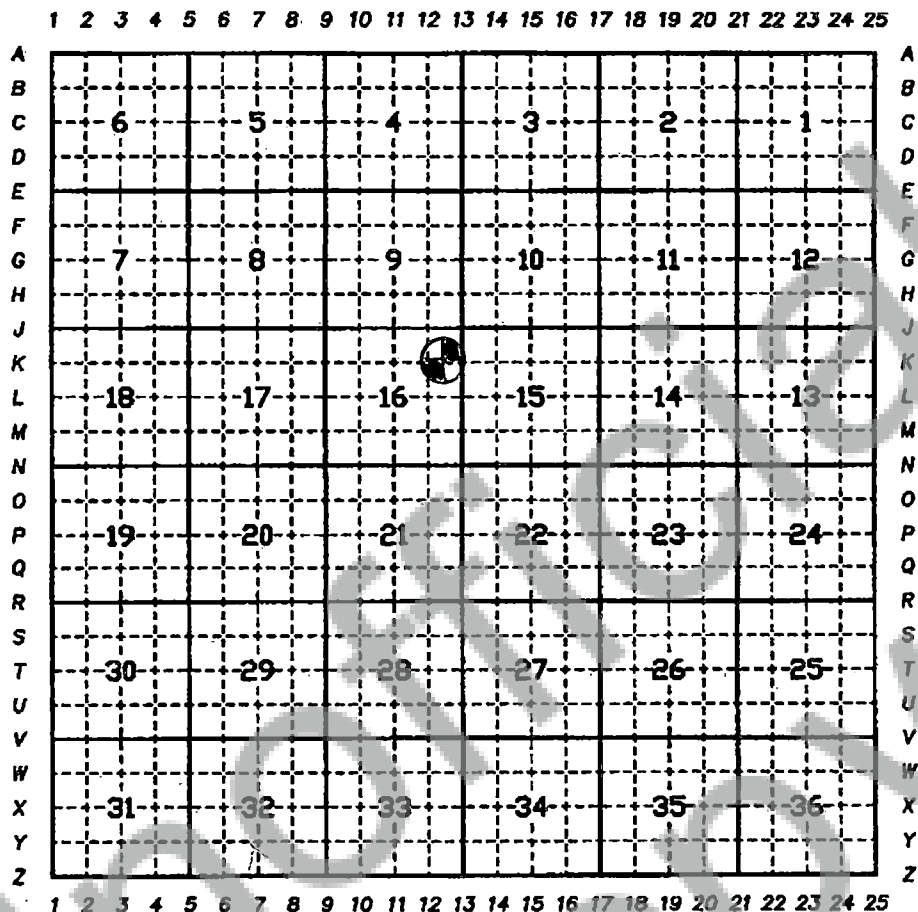
FOR CORNERS THAT ARE ONLY ON ONE LINE, THE CORNER CODE IS THE LINE DESIGNATION AND THE RELATED LINE SEGMENT; E.G., A CORNER ON LINE 5 BETWEEN "B" AND "C" IS DESIGNATED BC-5.

FOR CORNERS THAT ARE BETWEEN LINES, THE CORNER CODE IS BOTH LINE SEGMENTS; E.G., A CORNER IN THE SE1/4 OF THE SE1/4 OF SECTION 18 IS DESIGNATED MN 4-5.

# LAND CORNER RECORD

PAGE 2 OF 4

MARK THE LOCATION OF THE MONUMENT ON THE DIAGRAM, BELOW, THEN, FILL IN THE "CORNER CODE" BLANK ON PAGE 1.



PROVIDE AN ACCURATE DESCRIPTION AND LOCATION, IN REFERENCE TO THE CORNER POSITION, OF ALL MONUMENTS AND ACCESSORIES FOUND, SET, OR RE-SET AT THE CORNER, THE BASIS OF BEARINGS USED, AND ANY HELPFUL COROLLARY INFORMATION:

(2024) R. Ellis of the U.S. Forest Service, Columbia Land Zone recovered the C-E-E-NE 1/256 corner of S16 T3N R9E as set by WA LS#18731 Roy O. Gaylord in 1995 during a survey for the U.S. Forest Service that was not filed with Skamania County. Monument is a 3-1/4" USDA Forest Service aluminum cap on 2-1/2" aluminum pipe, 1' above the ground. The following references were recovered:

Evidence:

10" Snag, East, 8' distance, with visible scribing.

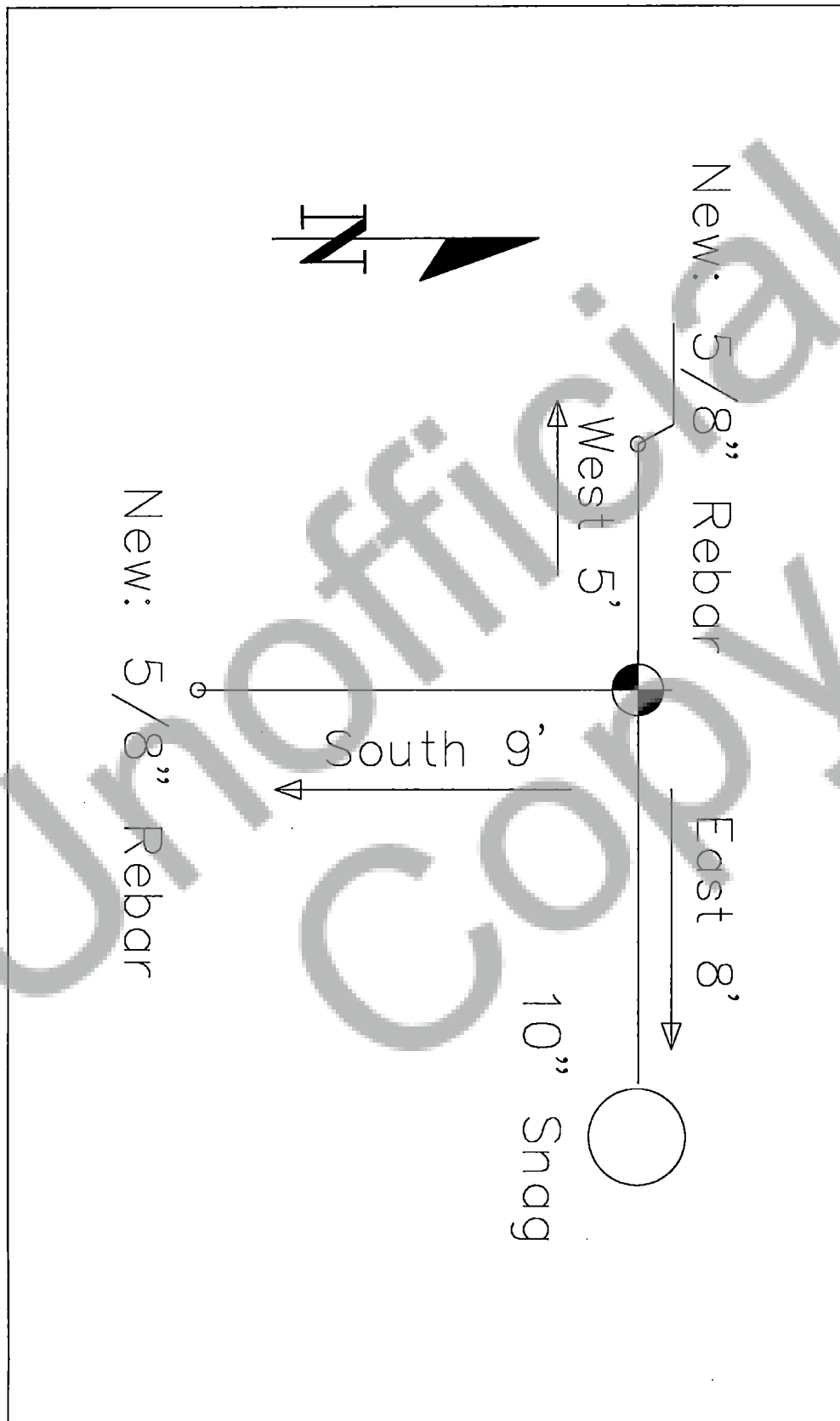
South bearing tree is now a stump

Perpetuation:

5/8" rebar, with pink plastic cap, marked "WAPLS20100531", South, 9' distance with aluminum guard post and LSM/bearing tree tags attached and set behind reference cap facing the monument.

5/8" rebar, with pink plastic cap, marked "WAPLS20100531", West, 5' distance with aluminum guard post and LSM/bearing tree tags attached and set behind reference cap facing the monument.

PROVIDE A SKETCH OF ALL MONUMENTS AND ACCESSORIES FOUND, SET, OR RE-SET AT THE CORNER, AND ANY HELPFUL COROLLARY INFORMATION:



DISCUSS THE HISTORY, EVIDENCE FOUND, AND PERPETUATION OF THE CORNER. SHOW REFERENCES; PROVIDE THE DATE OF THE FIELD WORK; IF APPLICABLE, MAKE REFERENCE TO A MAP OF RECORD, PREVIOUS LAND CORNER RECORD, MONUMENT REMOVAL PERMIT, AND/OR FIELD BOOK AND PAGE NUMBER. USE ADDITIONAL ATTACHMENT SHEETS IF NEEDED.

(1995) Corner set by WA LS#18731 Roy O. Gaylord for the U.S. Forest Service during the Augspurger Cadastral Survey and a preliminary plat was made but never filed with Skamania County. Information for the survey is held within Forest Service records.

Set 3-1/4" aluminum cap on 30" aluminum pipe with magnet under cap. No stones to mound around monument. Set fiberglass post at corner. The following references were recorded:

8" Douglas Fir, Due South, 1' distance, scribed "S161/256BT".

14" Douglas Fir, S89°E, 8' distance, scribed "S161/256BT".