



00020168202400018920040048

RETURN TO:

Erielle Lamb
987 McClellan Rd.
Vancouver, WA
98661

LAND CORNER RECORD

PER RCW 58.09.040(2), RCW 58.09.060(2) AND WAC 332-130-030(4)

PAGE 1 OF 4

THIS FORM IS FOR RECORDING A PLSS CORNER MONUMENT AND ACCESSORY INFORMATION WHEN A RECORD OF SURVEY IS NOT REQUIRED, PER RCW 58.09.040(2). DO NOT ALTER THIS FORM. (FORM UPDATED 9/01/2024)

AUDITOR'S CERTIFICATE: FILED THIS _____ DAY OF _____, (YEAR) _____

AT _____ M, IN BOOK _____ OF _____ AT PAGE _____ AT THE REQUEST OF _____

_____, AFN _____ (SIGNED) _____

COUNTY AUDITOR

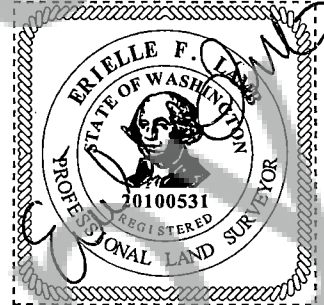
SURVEYOR'S CERTIFICATE: THIS LAND CORNER RECORD CORRECTLY REPRESENTS WORK PERFORMED BY ME OR UNDER MY DIRECTION IN CONFORMANCE WITH THE SURVEY RECORDING ACT, RCW 58.09.040(2).

SIGNATURE: Erielle Lamb CERT. #: 20100531**GRANTOR:**NAME: Erielle Lamb

CONTACT: _____

ADDRESS: 987 McClellan Rd. Vancouver WA, 98661

ADDRESS: _____

SIGNED PLS SEAL:DATE: 12-19-24**GRANTEE:** PUBLIC**INDEXING:**

☐ 1/4 OF THE ☐ 1/4 S: ☐ 16 T: ☐ 3 R: ☐ 9 ☐ W ☒ E COUNTY: Skamania

CORNER CODE (SEE DIAGRAM, PAGE 2): K-11PLSS CORNER NAME: C-N 1/16 of S16 BLM GCDB POINT ID (OPTIONAL): 340460**USE THE DIAGRAM ON PAGE 2 TO DETERMINE THE CORNER CODE.**

FOR CORNERS AT THE INTERSECTION OF TWO LINES, THE CORNER CODE IS THE ALPHANUMERIC COORDINATE THAT CORRESPONDS TO THE APPROPRIATE INTERSECTION OF LINES.

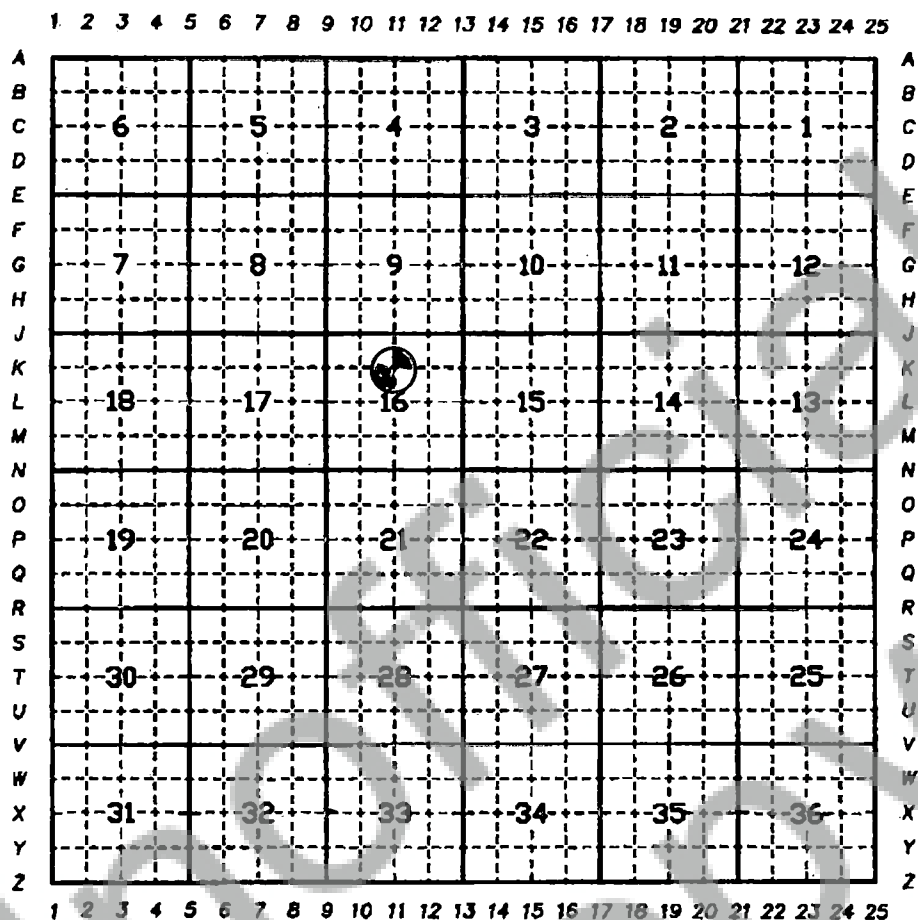
FOR CORNERS THAT ARE ONLY ON ONE LINE, THE CORNER CODE IS THE LINE DESIGNATION AND THE RELATED LINE SEGMENT; E.G., A CORNER ON LINE 5 BETWEEN "B" AND "C" IS DESIGNATED BC-5.

FOR CORNERS THAT ARE BETWEEN LINES, THE CORNER CODE IS BOTH LINE SEGMENTS; E.G., A CORNER IN THE SE1/4 OF THE SE1/4 OF SECTION 18 IS DESIGNATED MN 4-5.

LAND CORNER RECORD

PAGE 2 OF 4

MARK THE LOCATION OF THE MONUMENT ON THE DIAGRAM, BELOW, THEN, FILL IN THE "CORNER CODE" BLANK ON PAGE 1.



PROVIDE AN ACCURATE DESCRIPTION AND LOCATION, IN REFERENCE TO THE CORNER POSITION, OF ALL MONUMENTS AND ACCESSORIES FOUND, SET, OR RE-SET AT THE CORNER, THE BASIS OF BEARINGS USED, AND ANY HELPFUL COROLLARY INFORMATION:

(2024) R. Ellis of the U.S. Forest Service, Columbia Land Zone recovered the C-N 1/16 corner of S16 T3N R9E as set by WA LS#18731 Roy O. Gaylord in 1995 during a survey for the U.S. Forest Service that was not filed with Skamania County. Monument is a 3-1/4" USDA Forest Service aluminum cap on 2-1/2" aluminum pipe, 12-1/2" above the ground. The following references were recovered:

Evidence:

15" Douglas Fir, S1-1/2°W, 27.1', with healed blaze.

Douglas Fir, N88°E, 25.2', with healed blaze, leaning severely westward, root ball partially out of the ground.

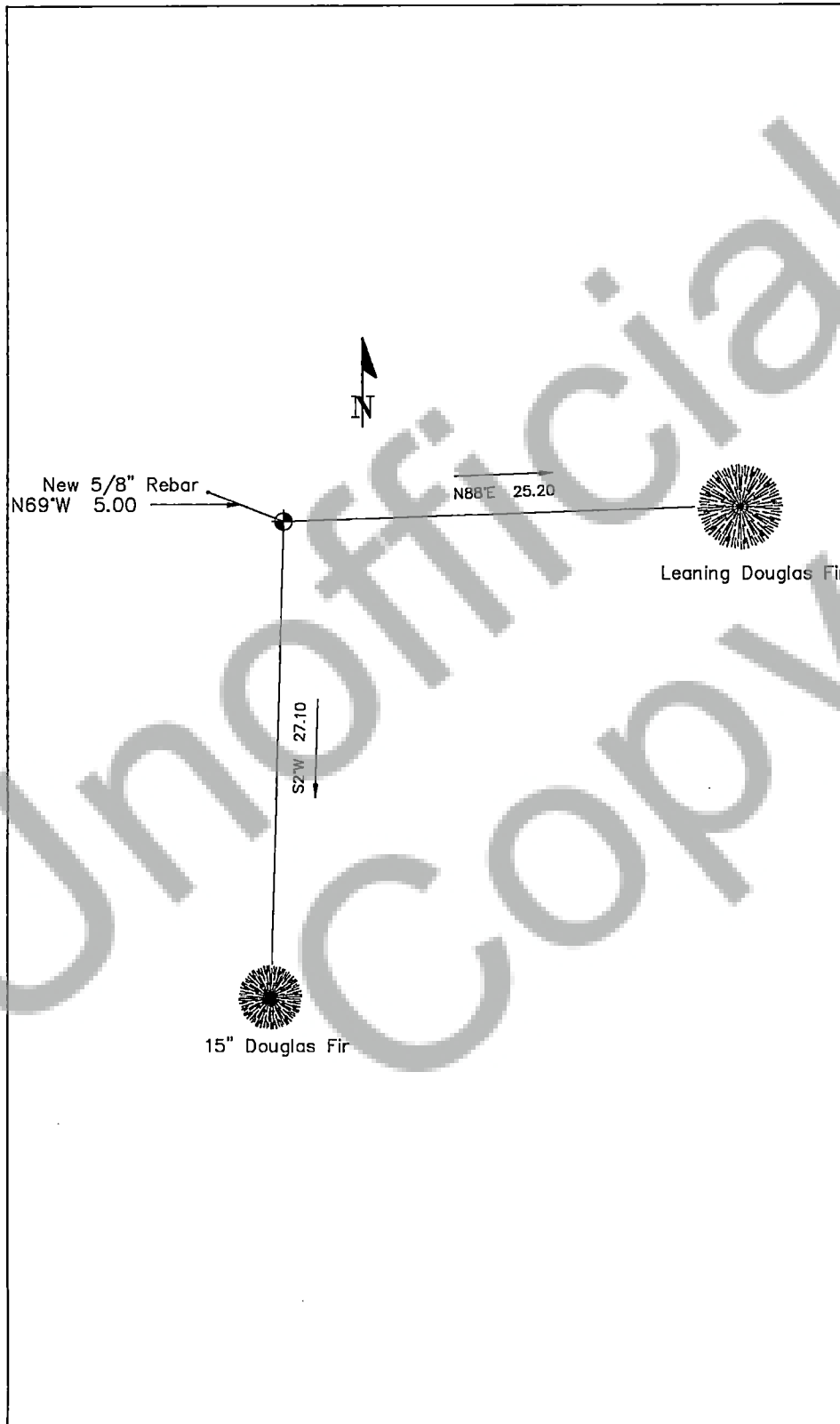
Perpetuation:

5/8"x30" rebar, with pink plastic cap, marked "WAPLS20100531", N69°W, 5' distance with aluminum guard post set behind reference cap with LSM and bearing tree tags attached and facing the monument.

LAND CORNER RECORD

PAGE 3 OF 4

PROVIDE A SKETCH OF ALL MONUMENTS AND ACCESSORIES FOUND, SET, OR RE-SET AT THE CORNER, AND ANY HELPFUL COROLLARY INFORMATION:



LAND CORNER RECORD

PAGE 4 OF 4

DISCUSS THE HISTORY, EVIDENCE FOUND, AND PERPETUATION OF THE CORNER. SHOW REFERENCES; PROVIDE THE DATE OF THE FIELD WORK; IF APPLICABLE, MAKE REFERENCE TO A MAP OF RECORD, PREVIOUS LAND CORNER RECORD, MONUMENT REMOVAL PERMIT, AND/OR FIELD BOOK AND PAGE NUMBER. USE ADDITIONAL ATTACHMENT SHEETS IF NEEDED.

(1995) Corner set by WA LS#18731 Roy O. Gaylord for the U.S. Forest Service during the Augspurger Cadastral Survey. A preliminary plat was made but never filed with Skamania County. Information for the survey is held within Forest Service records.

Set 3-1/4" aluminum cap on 30" aluminum pipe with magnet under cap. Set stone mound around monument along with a fiberglass post. The following references were recorded:

12" Douglas Fir, N88°E, 25.2', scribed "S16C-N1/16BT".
12" Douglas Fir, S1-1/2°W, 27.1', "S16C-N1/16BT".