



00020166202400018900040044

RETURN TO:

Erielle Lamb
987 McClellan Rd.
Vancouver, WA
98661

LAND CORNER RECORD

PER RCW 58.09.040(2), RCW 58.09.060(2) AND WAC 332-130-030(4)

PAGE 1 OF 4

THIS FORM IS FOR RECORDING A PLSS CORNER MONUMENT AND ACCESSORY INFORMATION WHEN A RECORD OF SURVEY IS NOT REQUIRED, PER RCW 58.09.040(2). DO NOT ALTER THIS FORM. (FORM UPDATED 9/01/2024)

AUDITOR'S CERTIFICATE: FILED THIS _____ DAY OF _____, (YEAR) _____
AT _____ M, IN BOOK _____ OF _____ AT PAGE _____ AT THE REQUEST OF _____
_____ AFN _____ (SIGNED) _____
COUNTY AUDITOR

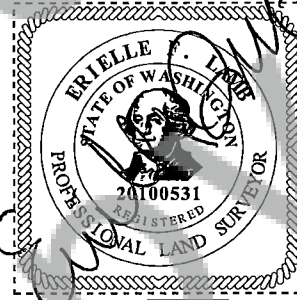
SURVEYOR'S CERTIFICATE: THIS LAND CORNER RECORD CORRECTLY REPRESENTS WORK PERFORMED BY ME OR UNDER MY DIRECTION IN CONFORMANCE WITH THE SURVEY RECORDING ACT, RCW 58.09.040(2).

SIGNATURE:  CERT. #: 20100531

GRANTOR:

NAME: Erielle Lamb
CONTACT: _____
ADDRESS: 987 McClellan Rd. Vancouver WA, 98661
ADDRESS: _____

SIGNED PLS SEAL:



DATE: 12-23-2024

GRANTEE: PUBLIC

INDEXING:

☐ 1/4 OF THE ☐ 1/4 S: 16 T: 3 R: 9 ☐ W ☒ E COUNTY: Skamania

CORNER CODE (SEE DIAGRAM, PAGE 2): J-9

PLSS CORNER NAME: NW corner of S16 BLM GCDB POINT ID (OPTIONAL): 300500

USE THE DIAGRAM ON PAGE 2 TO DETERMINE THE CORNER CODE.

FOR CORNERS AT THE INTERSECTION OF TWO LINES, THE CORNER CODE IS THE ALPHANUMERIC COORDINATE THAT CORRESPONDS TO THE APPROPRIATE INTERSECTION OF LINES.

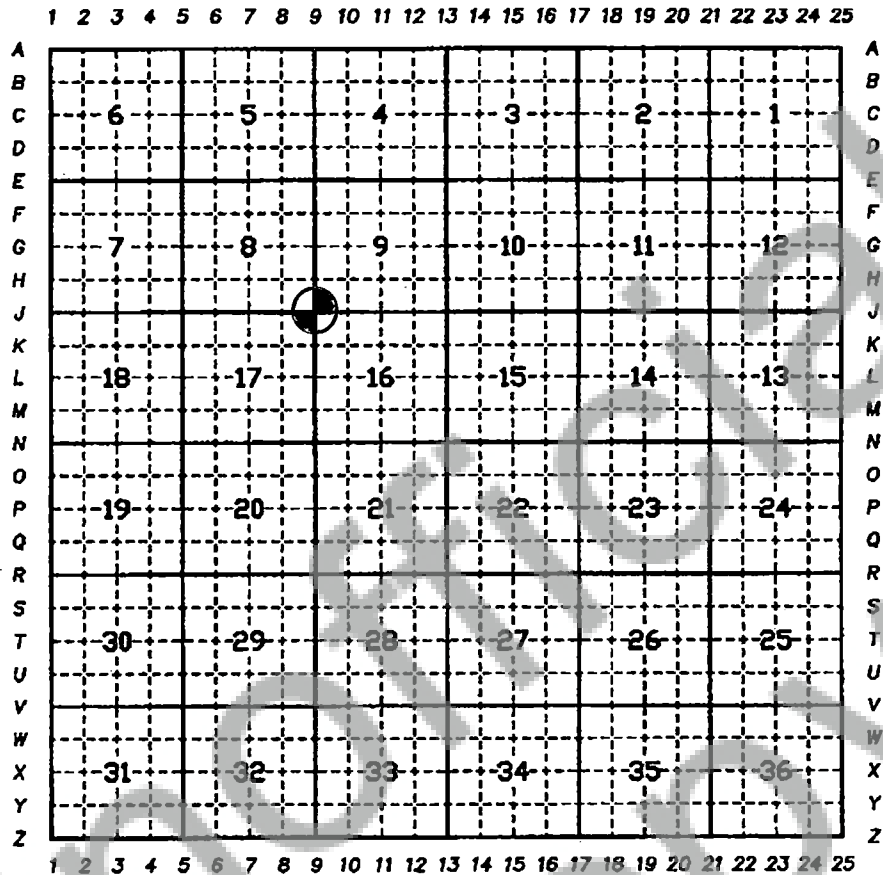
FOR CORNERS THAT ARE ONLY ON ONE LINE, THE CORNER CODE IS THE LINE DESIGNATION AND THE RELATED LINE SEGMENT; E.G., A CORNER ON LINE 5 BETWEEN "B" AND "C" IS DESIGNATED BC-5.

FOR CORNERS THAT ARE BETWEEN LINES, THE CORNER CODE IS BOTH LINE SEGMENTS; E.G., A CORNER IN THE SE 1/4 OF THE SE 1/4 OF SECTION 18 IS DESIGNATED MN 4-5.

LAND CORNER RECORD

PAGE 2 OF 4

MARK THE LOCATION OF THE MONUMENT ON THE DIAGRAM, BELOW, THEN, FILL IN THE "CORNER CODE" BLANK ON PAGE 1.



PROVIDE AN ACCURATE DESCRIPTION AND LOCATION, IN REFERENCE TO THE CORNER POSITION, OF ALL MONUMENTS AND ACCESSORIES FOUND, SET, OR RE-SET AT THE CORNER, THE BASIS OF BEARINGS USED, AND ANY HELPFUL COROLLARY INFORMATION:

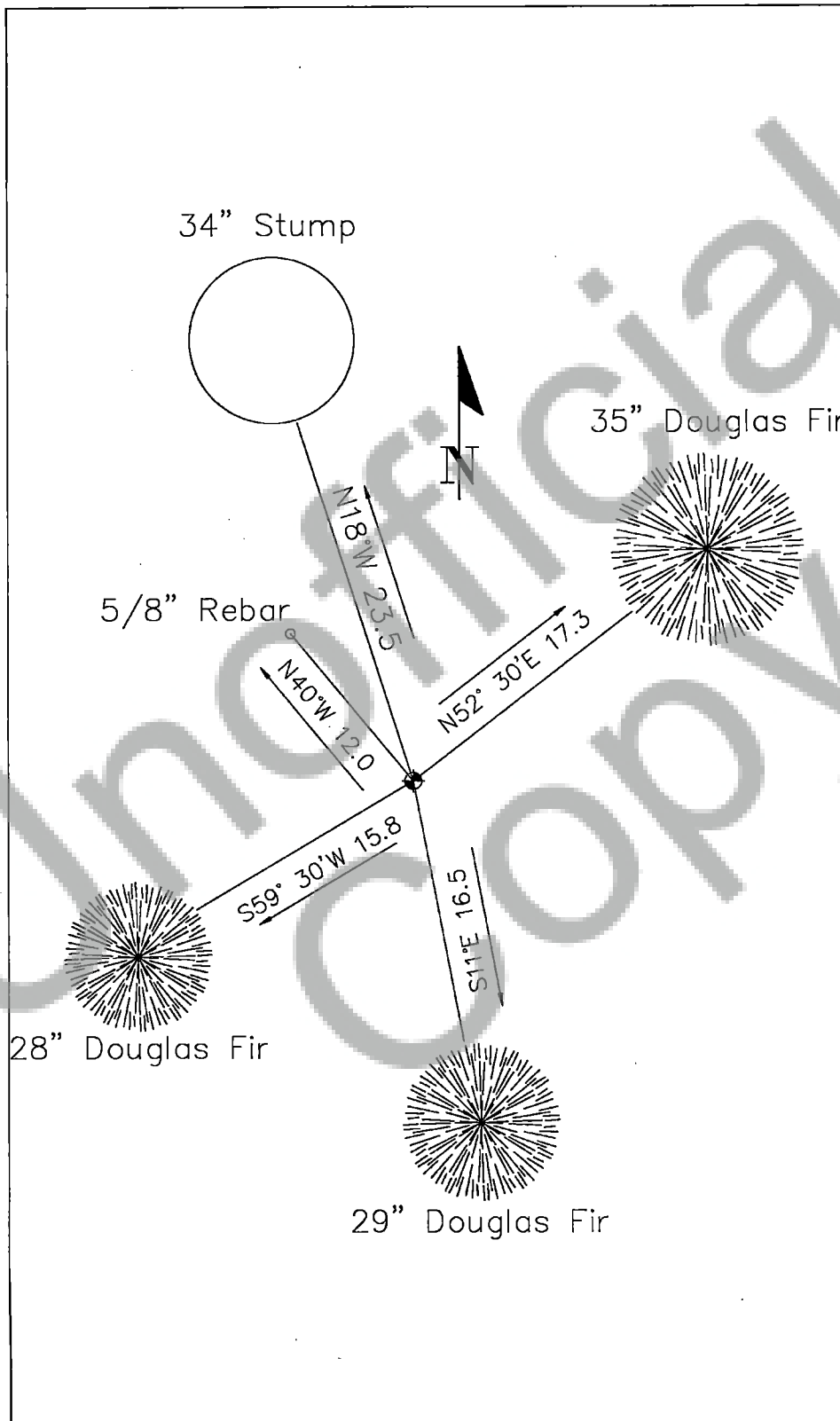
(2024) R. Ellis of the U.S. Forest Service, Columbia Land Zone recovered the section corner of S8, S9, S16, & S17 of T3N R9E as re-set by WA LS#18731 Roy O. Gaylord in 1995. Found 2-1/2" aluminum monument, 4" above the ground.

Evidence:

- 24" Blown over Fir with land survey monument tag south 0.25'.
- 28" Douglas Fir, S59-1/2°W, 15.8' distance, with healed blaze and Forest Service Boundary sign.
- 35" Douglas Fir, N52-1/2°E, 17.3' distance, with healed blaze.
- 29" Douglas Fir, S11°E, 16.5' distance, with healed blaze.
- 34" Douglas Fir Stump, N18°W, 23.5' distance
- Found 5/8" rebar with yellow plastic cap marked "TerraLS18731", N40°W, 12.0' distance.
- Corner is 420' west from tank trapped road.

Painted 6" red bands around all new and existing bearing trees. New land survey monument signs and bearing tree tags were placed on new bearing trees and old trees with tags missing or illegible.

PROVIDE A SKETCH OF ALL MONUMENTS AND ACCESSORIES FOUND, SET, OR RE-SET AT THE CORNER, AND ANY HELPFUL COROLLARY INFORMATION:



DISCUSS THE HISTORY, EVIDENCE FOUND, AND PERPETUATION OF THE CORNER. SHOW REFERENCES; PROVIDE THE DATE OF THE FIELD WORK; IF APPLICABLE, MAKE REFERENCE TO A MAP OF RECORD, PREVIOUS LAND CORNER RECORD, MONUMENT REMOVAL PERMIT, AND/OR FIELD BOOK AND PAGE NUMBER. USE ADDITIONAL ATTACHMENT SHEETS IF NEEDED.

(1880) Deputy Surveyor Lewis Shelton set 4"x4" Fir post, 4' long for the corner of S8, S9, S16, & S17 of T3N R9E. The following references were taken:

24" Fir, N49°E, 25 links.
20" Fir, N10°W, 28 links.
24" Fir, S66°W, 11 links.
24" Fir, S11°E, 25 links.

(1971) John Lawson of the WA DNR Battleground District notes 4 bearing trees with scribing at the corner. Information held in WA DNR records.

(1983) J. Krause, Forester Trainee visits corner in September 1983. Information held in Forest Service records. The following references were documented:

24" Douglas Fir Snag, fallen on corner location, blazed and painted white.
20" Douglas Fir, N49°E, 15', with yellow tag.
20" Douglas Fir, S10°E, approx. 12', blazed.
20" Douglas Fir, S72°W, approx. 15', marked with yellow Natl. Forest Boundary Tag.

(1995) Corner re-set by WA LS#18731 Roy O. Gaylord of Terra Surveying during the Augspurger Cadastral Survey for the U.S. Forest Service. A preliminary plat was made but never filed with Skamania County. Information for the survey is held within Forest Service records. The following references were recorded:

Evidence:

34" Douglas Fir Stump, N18°W, 23.5', with bearing tree sign and aluminum nail in center of stump.
33" Douglas Fir, N52-1/2°E, 17.3', with 54-9 sign attached and blazed "T3NR9ES9BT".
27" Douglas Fir, S11°E, 16.5', with 54-3 & 54-9 signs attached with healed blaze.
26" Douglas Fir, S59-1/2°W, 15.8', with forest boundary sign, blazed tree "T3NR9ES17BT".
24" blown over Douglas Fir with 54-9 sign.

Perpetuation:

Set 2-1/2" aluminum cap on 30" aluminum pipe with magnet under cap. Placed stone mound around monument and set a fiberglass post at corner.

(2020) Corner visited by Austin Bell WALS41954 in February 2020 while conducting a survey for the Broughton Lumber Company. Found unrecorded aluminum cap marked PLS18731, 1995. Found Karsch 1988 bearing tree. Found PLS18731 bearing trees. 1983 J. Kraus recovery notes state 24" snag fallen on corner location. A tree had fallen next to the aluminum cap but was not old enough to be the 1983 snag. 1971 notes from John Lawson -Battleground District of the DNR note 4 bearing trees with scribing. No bearing trees with scribing were found in this survey. The following references were noted:

26" Douglas Fir, S60°W, 15'.
26" Douglas Fir, S20°E, 15.8'.
36" Stump, N22°W, 23.4'.
32" Douglas Fir, N44°E, 17.2'.