

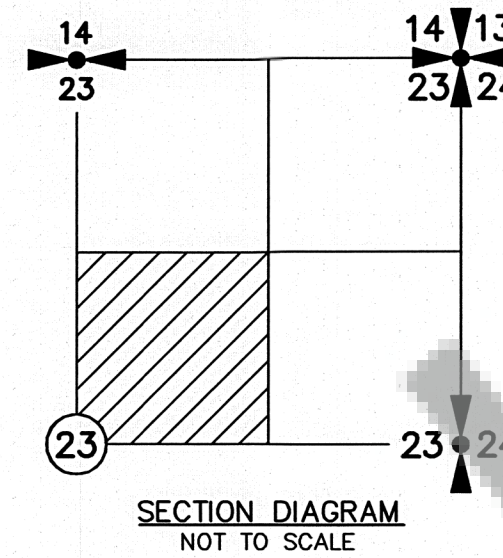
NARRATIVE

THE PURPOSE OF THIS SURVEY WAS TO MAP ENCROACHMENTS, SET POST ALONG THE WEST AND SOUTH LINE OF THE "PINE CREEK CABIN, LLC" TRACT AND VERIFY POST ALONG THE WEST LINE OF SAID TRACT SET IN ROS AFN 2018001464. FIELD WORK CONSISTED OF RECOVERING AND VERIFYING EXISTING GPS POINTS ESTABLISHED IN SAID SURVEY WHICH WAS PERFORMED BY OUR FIRM. THE GPS POINTS WERE COLLECTED ON "WASHINGTON STATE PLANE COORDINATE SYSTEM, SOUTH ZONE" (NAD 83/2011) WHICH WAS THE BASIS OF BEARING FOR THIS SURVEY. NO NEW MONUMENTS WERE ESTABLISHED DURING THIS SURVEY. DISTANCES SHOWN ARE GRID DISTANCES, TO OBTAIN GROUND DISTANCES DIVIDE DISTANCES SHOWN BY THE COMBINED SCALE FACTOR OF 0.99989637.

LINE NOTE

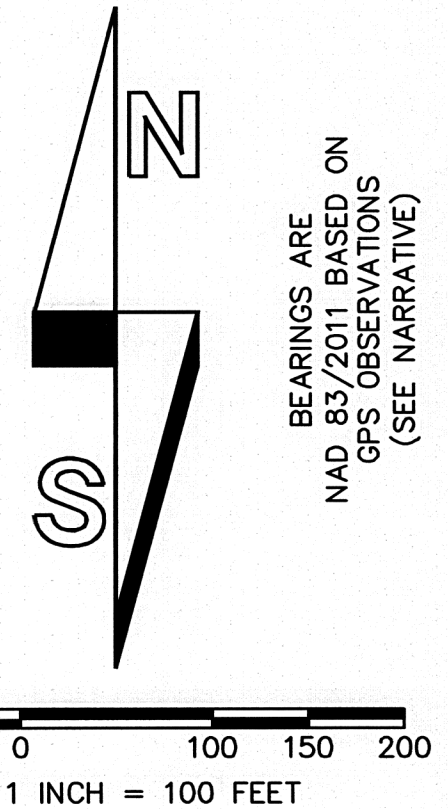
WE HAD ORIGINALLY SET 6 FIBERGLASS POST ALONG THE WEST LINE OF THE "PINE CREEK CABIN, LLC" TRACT WHEN WE PERFORMED ROS AFN 2018001464. WE WERE ABLE TO RECOVER 4 OF THOSE POST IN THIS SURVEY, 1 OF THEM HAD NOT BEEN MOVED BUT THE OTHER 3 POST HAD BEEN MOVED WESTERLY ANYWHERE FROM 2.3' TO 7.0'.

DEED REFERENCE
STATUTORY WARRANTY DEED
BOUNDARY LINE ADJUSTMENT
POPE RESOURCES
TO
POPE RESOURCES
AFN 2015001132
(06/11/2015)

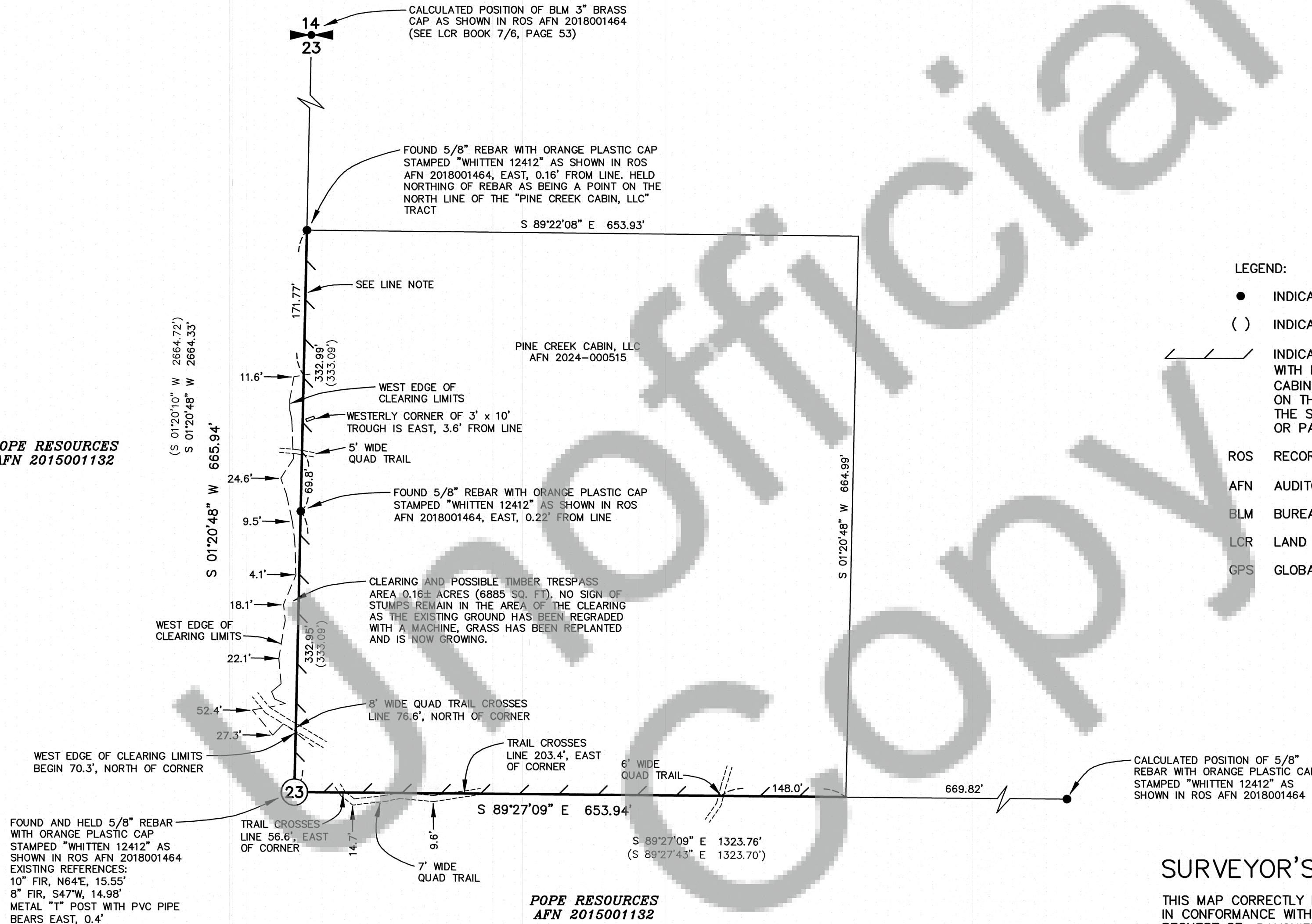


RECORD OF SURVEY

IN THE SW 1/4 NE 1/4 OF
SECTION 23, T7N, R6E, W.M.
SKAMANIA COUNTY, WA.

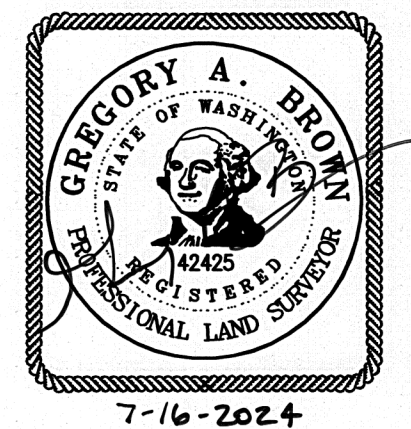


POPE RESOURCES
AFN 2015001132



LEGEND:

- INDICATES MONUMENT FOUND AS NOTED
- () INDICATES RECORD INFORMATION PER ROS AFN 2005155913
- INDICATES LINE MARKED WITH 1/2" x 72" FIBER GLASS RODS WITH RED RIBBON. TREES ALONG THE WEST LINE OF "PINE CREEK CABIN LLC" TRACT WERE BLAZED AND PAINTED WITH BLUE PAINT ON THE POPE RESOURCES SIDE OF LINE ONLY. NO TREES ALONG THE SOUTH LINE OF PINE CREEK CABIN LLC TRACT WERE BLAZED OR PAINTED EITHER SIDE OF LINE.
- ROS RECORD OF SURVEY
- AFN AUDITOR'S FILE NUMBER
- BLM BUREAU OF LAND MANAGEMENT
- LCR LAND CORNER RECORD
- GPS GLOBAL POSITIONING SYSTEM



SURVEYOR'S CERTIFICATE

THIS MAP CORRECTLY REPRESENTS A SURVEY MADE BY ME OR UNDER MY DIRECTION IN CONFORMANCE WITH THE REQUIREMENTS OF THE SURVEY RECORDING ACT AT THE REQUEST OF RAYONIER FOREST RESOURCES, L.P. IN JUNE, 2024.

Gregory A. Brown 7/16/2024
GREGORY A. BROWN, PROFESSIONAL LAND SURVEYOR, LS# 42425

AUDITOR'S CERTIFICATE

FILED FOR RECORD THIS 17th DAY OF July 2024 AT
1:49 P.M. IN BOOK 2024-000953 OF SURVEYS AT PAGE 1
AT THE REQUEST OF BROWN SURVEYING, PLLC.
AUDITOR'S FILE NUMBER 2024-000953

DEPUTY COUNTY AUDITOR

BROWN SURVEYING, PLLC MAKES NO WARRANTIES AS TO MATTERS OF UNWRITTEN TITLE SUCH AS ADVERSE POSSESSION, ACQUIESCENCE, ESTOPPLE, ETC.

A FIELD TRAVERSE WAS PERFORMED USING A NIKON NIVO 3.0C THREE SECOND TOTAL STATION WITH TDS DATA COLLECTION SYSTEM. THE FIELD TRAVERSE MET THE MINIMUM STANDARDS FOR SURVEYS AS DESIGNATED IN WAC 332-130-090. ALL CORNERS NOTED AS FOUND WERE VISITED ON 6/20/2024.

SCALE: 1"=100'
JOB NO. 24-061
DATE: 7-15-2024
CALC BY: GAB
DRAWN BY: KAK
CHECKED BY: GAB
SHEET 1 OF 1

BROWN
SURVEYING PLLC
PO BOX 414
AMBOY, WA 98601
360-600-0846
ebrownsurveying@gmail.com