

NARRATIVE

THE PURPOSE OF THIS SURVEY WAS TO POST THAT PORTION OF THE NORTH LINE OF SECTION 3 FOR THE "CHILTON INC. TRACT" AND THE NORTH, WEST AND SOUTH LINE OF THE NORTHEAST QUARTER OF SECTION 4 AS SHOWN FOR THE "SALTY J. LLC TRACT" CITED. THIS PROJECT WAS A CONTINUATION OF PRIOR WORK PERFORMED BY OUR FIRM THAT WAS RECORDED UNDER ROS AFN 2022-000206. GPS POINTS COLLECTED IN THAT SURVEY WERE RECOVERED, VERIFIED AND USED IN THIS SURVEY. THOSE GPS POINTS WERE COLLECTED ON "WASHINGTON STATE PLANE COORDINATE SYSTEM, SOUTH ZONE" (NAD 83/2011) WHICH WAS THE BASIS OF BEARING FOR THIS SURVEY. A SERIES OF "RTK GPS POINTS" WERE SET IN PAIRS AROUND THE NORTHEAST QUARTER OF SECTION 4 AND USED TO RUN CLOSED LOOP TRAVERSES ALONG THE LINES SHOWN AS MARKED. DISTANCES SHOWN ARE GROUND DISTANCES, NO NEW MONUMENTS WERE ESTABLISHED DURING THIS SURVEY. TO CALCULATE THE POSITIONS FOR SECTION 4 I USED THE 1952 BLM SURVEY NOTED IN SURVEY REFERENCE 1. I HELD THE RECORD ANGLE OF 88°49'00" AT THE EAST QUARTER CORNER OF SECTION 4 AND THE DISTANCE OF 2796.42' AS SHOWN IN SURVEY REFERENCE 1 TO CALCULATE THE CENTER OF SECTION 4. FOR THE NORTH LINE OF SECTION 4, I HELD THE RECORD ANGLE OF 177°44'00" AT THE SOUTHEAST QUARTER OF SECTION 33 AND THE DISTANCE OF 2436.72' TO CALCULATE THE NORTH QUARTER OF SECTION 4 AND THE DISTANCE OF 2726.46' TO CALCULATE THE SOUTH QUARTER OF SECTION 33. THE DISTANCE BETWEEN THE CENTER OF SECTION 4 AND THE NORTH QUARTER CORNER WAS 4.63' SHORTER THAN THE RECORD BLM DISTANCE, BUT THE BLM MAP CLOSURE AT THIS CORNER WHEN MODELING THE NORTHEAST QUARTER IS 3.60'. REFER TO THE ACTIVE LANDSLIDE NOTE ON SHEET 2 OF ROS AFN 2022-000206 AND TO THE BOUNDARY NOTE ON SHEET 1 OF ROS AFN 2022-001164.

DEED REFERENCE

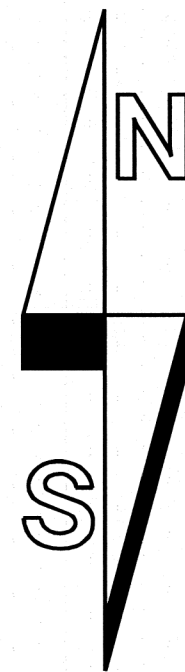
BARGAIN AND SALE DEED
WEYERHAEUSER COMPANY
TO
CHILTON INC.
AFN 2021-001579
(05/05/2021)

STATUTORY WARRANTY DEED
SASQUATCH HEIGHTS, LLC
TO
SALTY J. LLC
AFN 2024-000054
(01/16/2024)

SURVEY REFERENCE

1) BLM SURVEY, GROUP NO. 214 (1952)
2) ROS 2-257

RECORD OF SURVEY
IN GOV'T LOT 4 IN THE NW 1/4 OF
SECTION 3 AND GOV'T LOTS 1 AND 2
AND THE SW 1/4 AND SE 1/4
OF THE NE 1/4
OF SECTION 4, T2N, R7E, W.M.
SKAMANIA COUNTY, WA.



BEARINGS ARE
NAD 83/2011 BASED ON
GPS OBSERVATIONS
(SEE NARRATIVE)

500 250 0 500 750 1000
SCALE 1 INCH = 500 FEET

LEGEND:

- INDICATES MONUMENT FOUND (UNLESS NOTED OTHERWISE)
- () INDICATES RECORD INFORMATION PER SURVEY REFERENCE NUMBER
- INDICATES LINE MARKED WITH 1/2" x 72" FIBER GLASS RODS WITH RED AND WHITE RIBBON. TREES ALONG LINE BLAZED AND PAINTED WITH BLUE PAINT.
- ① MONUMENT I.D. NUMBER, SEE SHEET 2 FOR DESCRIPTION
- ROS RECORD OF SURVEY
- AFN AUDITOR'S FILE NUMBER
- BLM BUREAU OF LAND MANAGEMENT
- GPS GLOBAL POSITIONING SYSTEM
- RTK REAL TIME KINEMATIC



4-8-2024

SURVEYOR'S CERTIFICATE

THIS MAP CORRECTLY REPRESENTS A SURVEY MADE BY ME OR UNDER MY DIRECTION IN CONFORMANCE WITH THE REQUIREMENTS OF THE SURVEY RECORDING ACT AT THE REQUEST OF CHILTON INC. IN JANUARY, 2024.

Gregory A. Brown 4/8/2024
GREGORY A. BROWN, PROFESSIONAL LAND SURVEYOR, LS# 42425

AUDITOR'S CERTIFICATE

FILED FOR RECORD THIS 15th DAY OF April 2024 AT
1:52 P.M. IN BOOK 1 OF SURVEYS AT PAGE 1
AT THE REQUEST OF BROWN SURVEYING, PLLC. AFN # 2024-000442
2024-000442
AUDITOR'S FILE NUMBER

Kathryn M.
DEPUTY COUNTY AUDITOR

BROWN SURVEYING, PLLC MAKES NO WARRANTIES AS TO MATTERS OF UNWRITTEN TITLE SUCH AS ADVERSE POSSESSION, ACQUIESCENCE, ESTOPPLE, ETC.

A FIELD TRAVERSE WAS PERFORMED USING A NIKON NIVO 3.0C THREE SECOND TOTAL STATION WITH TDS DATA COLLECTION SYSTEM. THE FIELD TRAVERSE MET THE MINIMUM STANDARDS FOR SURVEYS AS DESIGNATED IN WAC 332-130-090. ALL CORNERS NOTED AS FOUND WERE VISITED ON 1/30/2024 THROUGH 2/28/2024.

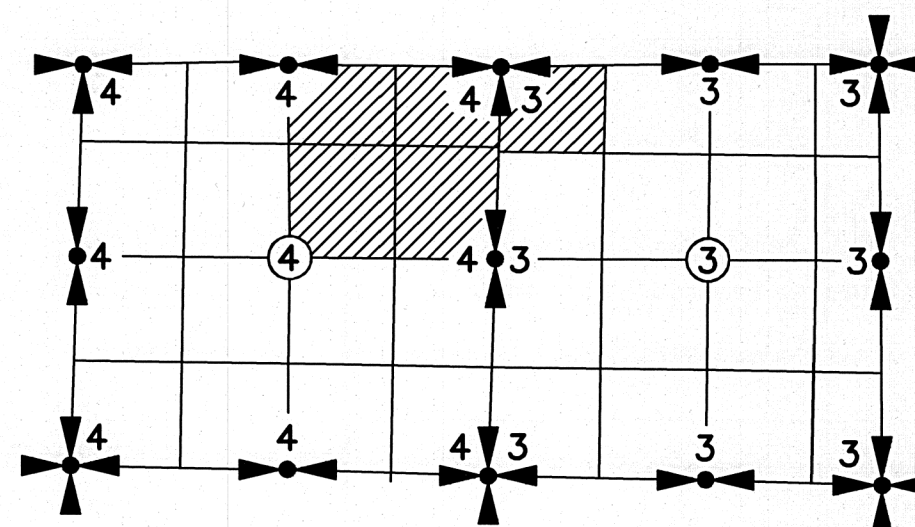
SCALE: 1"=500'
JOB NO. 24-008
DATE: 4-8-2024
CALC BY: GAB
DRAWN BY: TJC
CHECKED BY: GAB
SHEET 1 OF 2

BROWN
SURVEYING PLLC
PO BOX 414
AMBOY, WA 98601
360-600-0846
ebrownsurveying@gmail.com

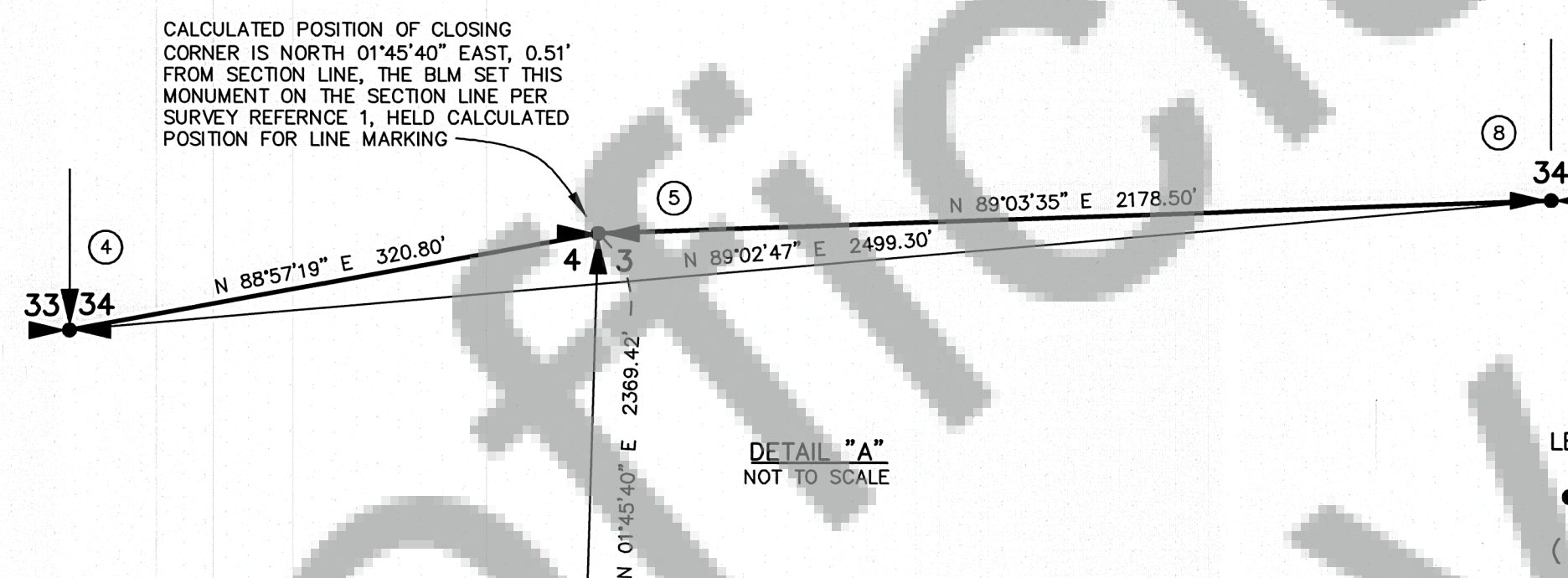
RECORD OF SURVEY

IN GOV'T LOT 4 IN THE NW 1/4 OF
SECTION 3 AND GOV'T LOTS 1 AND 2
AND THE SW 1/4 AND SE 1/4
OF THE NE 1/4
OF SECTION 4, T2N, R7E, W.M.
SKAMANIA COUNTY, WA.

- ① FOUND BLM 2-1/2" BRASS CAP AS SHOWN IN SURVEY REFERENCE 1, S71°33'44"E, 8.24' FROM CALCULATED POSITION, HELD CALC
- ② FOUND BLM 2-1/2" BRASS CAP AS SHOWN IN SURVEY REFERENCE 1, S79°15'28"E, 15.26' FROM CALCULATED POSITION, HELD CALC
- ③ FOUND BLM 2-1/2" BRASS CAP AS SHOWN IN SURVEY REFERENCE 1, S77°48'57"E, 14.58' FROM CALCULATED POSITION, HELD CALC
- ④ FOUND BLM 2-1/2" BRASS CAP AS SHOWN IN ROS 2-257, S89°55'42"E, 17.71' FROM CALCULATED POSITION, HELD CALC (SEE LCR 3/7-31)
- ⑤ FOUND BLM 2-1/2" BRASS CAP AS SHOWN IN ROS 2-257, S87°26'13"E, 17.92' FROM CALCULATED POSITION, HELD CALC (SEE LCR 2/7-26)
- ⑥ FOUND DNR CONCRETE MONUMENT WITH 3" BRASS CAP AS SHOWN IN FM 353, N89°07'40"E, 17.47' FROM CALCULATED POSITION, HELD CALC
- ⑦ FOUND 2-1/2" BRASS CAP AS SHOWN IN ROS 2-257, N86°13'55"E, 16.74' FROM CALCULATED POSITION, HELD CALC (SEE LCR 2/7-27)
- ⑧ FOUND DNR CONCRETE MONUMENT WITH 3" BRASS CAP AS SHOWN IN FM 353, N82°14'27"E, 9.77' FROM CALCULATED POSITION, HELD CALC (SEE LCR 3/7-32)
- ⑨ FOUND 2-1/2" BRASS CAP AS SHOWN IN ROS 2-257, N81°51'50"E, 10.56" FROM CALCULATED POSITION, HELD CALC (SEE LCR 2/7-28)
- ⑩ FOUND BLM 2-1/2" BRASS CAP AS SHOWN IN ROS 2-257, N88°11'42"E, 11.68' FROM CALCULATED POSITION, HELD CALC (SEE LCR 2/7-33)
- ⑪ CALCULATED POSITION OF MONUMENT AS SHOWN IN ROS 2-257, NOT SEARCHED FOR DURING THIS SURVEY



SECTION DIAGRAM
NOT TO SCALE



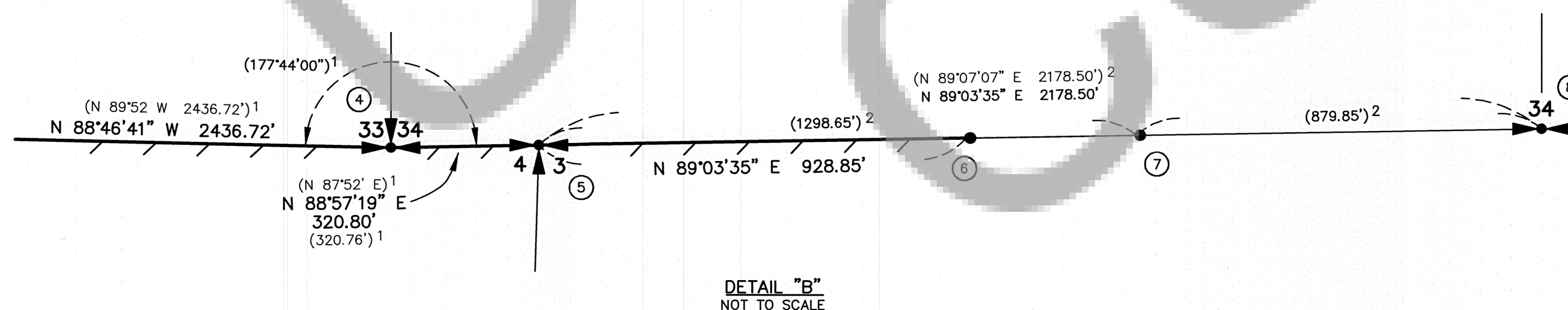
DETAIL "A"
NOT TO SCALE



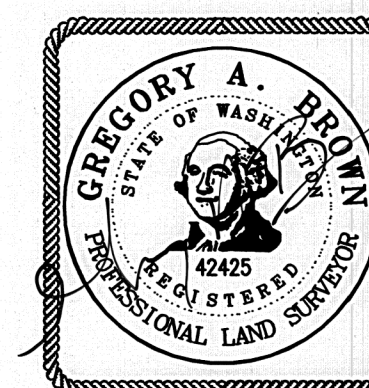
BEARINGS ARE
NAD 83/2011 BASED ON
GPS OBSERVATIONS
(SEE NARRATIVE)

LEGEND:

- INDICATES MONUMENT FOUND (UNLESS NOTED OTHERWISE)
- () INDICATES RECORD INFORMATION PER SURVEY REFERENCE NUMBER
- INDICATES LINE MARKED WITH 1/2" x 72" FIBER GLASS RODS WITH RED AND WHITE RIBBON. TREES ALONG LINE BLAZED AND PAINTED WITH BLUE PAINT.
- ① MONUMENT I.D. NUMBER, SEE THIS SHEET FOR DESCRIPTION
- GLO GENERAL LAND OFFICE
- ROS RECORD OF SURVEY
- AFN AUDITOR'S FILE NUMBER
- BLM BUREAU OF LAND MANAGEMENT



DETAIL "B"
NOT TO SCALE



4-8-2024

SCALE: NA
JOB NO. 24-008
DATE: 4-8-2024
CALC BY: GAB
DRAWN BY: TJC
CHECKED BY: GAB
SHEET 2 OF 2

BROWN
SURVEYING PLLC

PO BOX 414
AMBOY, WA 98601
360-600-0846
ebrownsurveying@gmail.com