

# NARRATIVE

THE PURPOSE OF THIS SURVEY WAS TO POST THOSE PORTIONS OF LINE SHOWN AS MARKED FOR THE "POPE RESOURCES TRACT" CITED. CONTROLLING CORNERS SHOWN WERE TIED BY CONVENTIONAL TRAVERSE METHODS ORIGINATING FROM NEARBY "RTK GPS POINTS". THE GPS POINTS WERE COLLECTED ON "WASHINGTON STATE PLANE COORDINATE SYSTEM, SOUTH ZONE" (NAD 83/2011) WHICH WAS THE BASIS OF BEARING FOR THIS SURVEY. A CLOSED LOOP TRAVERSE BEGINNING AND ENDING ON SAID GPS POINTS WAS THEN RUN ALONG THE LINES SHOWN AS MARKED. LINE TREES AND NEW MONUMENTS ESTABLISHED WERE TIED AND SET RADIALY FROM THE ABOVE DESCRIBED TRAVERSES. DISTANCES SHOWN ARE GRID DISTANCES, TO OBTAIN GROUND DISTANCES DIVIDE THE DISTANCES SHOWN BY THE COMBINED SCALE FACTOR OF 0.99982270.

# REFERENCE TREE NOTE

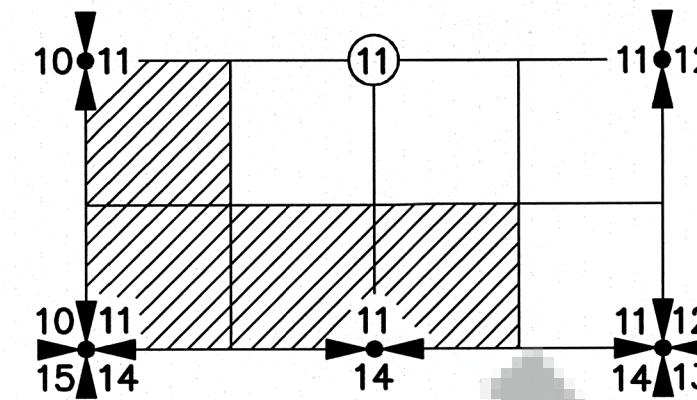
NEW REFERENCE TREES WERE MEASURED TO A 6" NAIL SET IN SIDE CENTER OF TREE. ALSO PLACED A BEARING TREE SIGN AND 4 NOTCHES FACING TOWARD THE CORNER. BEARINGS NOTED WERE TAKEN WITH A HAND HELD COMPASS WITH A DECLINATION SET TO 16° EAST.

# CORNER NOTE

IN THE LATE 1980'S, HAMPSTUR CORPORATION PERFORMED A CORNER RESTORATION PROJECT IN 3 TOWNSHIPS AROUND SWIFT LAKE FOR PLUM CREEK. PHIL GUSTIN AT HAMPSTUR PROVIDED ME WITH CORNER NOTES FROM THAT PROJECT. WITH THE EXCEPTION OF THE SOUTH QUARTER CORNER AND LINE TREES, THE OTHER MONUMENTS SHOWN IN THIS SURVEY ARE FROM THAT RESTORATION PROJECT.

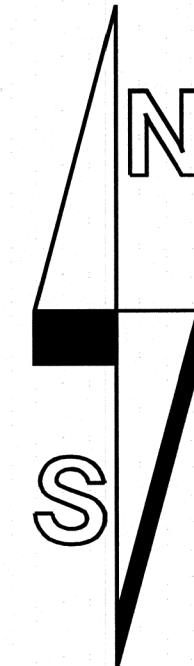
# RECORD OF SURVEY

IN THE NW 1/4, SW 1/4 AND SE 1/4 OF THE SW 1/4 AND THE SW 1/4 SE 1/4 OF SECTION 11, T6N, R5E, W.M. SKAMANIA COUNTY, WA.



SECTION DIAGRAM  
NOT TO SCALE

DEED REFERENCE  
SPECIAL WARRANTY DEED  
PLUM CREEK TIMBERLANDS L.P.  
TO  
POPE RESOURCES  
BOOK 208, PAGE 110  
(03/30/2001)



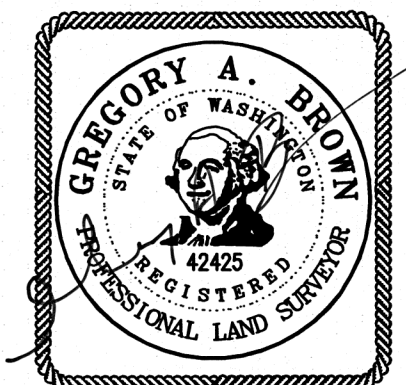
BEARINGS ARE  
NAD 83/2011 BASED ON  
GPS OBSERVATIONS  
(SEE NARRATIVE)

400 200 0 400 600 800  
SCALE 1 INCH = 400 FEET

# LEGEND:

- INDICATES MONUMENT FOUND AS NOTED
- ⊙ INDICATES 5/8" x 36" REBAR WITH ORANGE PLASTIC CAP INSCRIBED "BROWN 42425" SET
- ( ) INDICATES RECORD GLO INFORMATION
- INDICATES LINE MARKED WITH 1/2" x 72" FIBER GLASS RODS WITH RED RIBBON. TREES ALONG LINE BLAZED AND PAINTED WITH BLUE PAINT.

GLO GENERAL LAND OFFICE  
OBT ORIGINAL BEARING TREE  
ROS RECORD OF SURVEY  
AFN AUDITOR'S FILE NUMBER  
GPS GLOBAL POSITIONING SYSTEM  
RTK REAL TIME KINEMATIC  
SC SIDE CENTER  
RR RAIL ROAD



12-9-2023

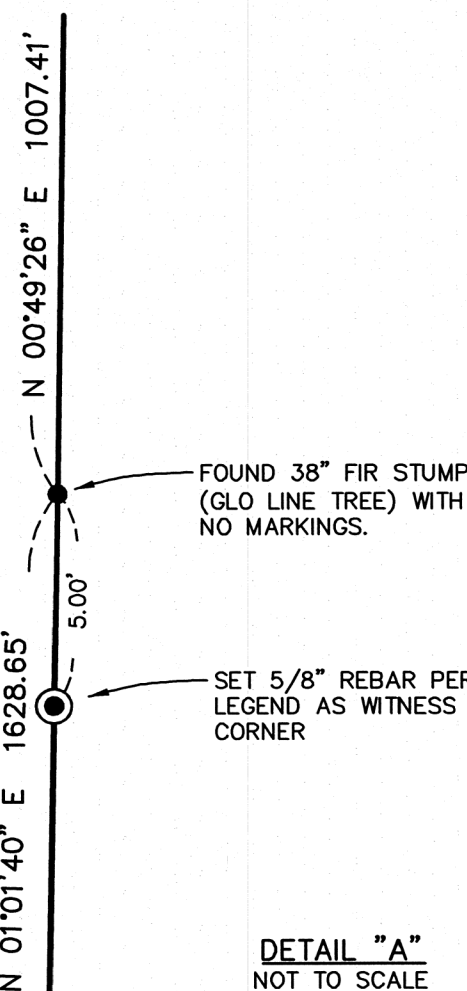
# SURVEYOR'S CERTIFICATE

THIS MAP CORRECTLY REPRESENTS A SURVEY MADE BY ME OR UNDER MY DIRECTION IN CONFORMANCE WITH THE REQUIREMENTS OF THE SURVEY RECORDING ACT AT THE REQUEST OF RAYONIER FOREST RESOURCES, L.P. IN SEPTEMBER, 2023.

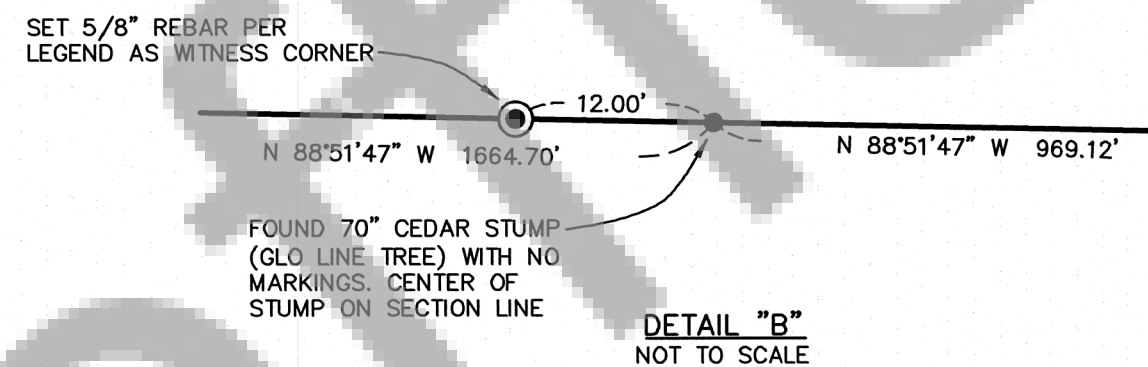
Gregory A. Brown 12/9/2023  
GREGORY A. BROWN, PROFESSIONAL LAND SURVEYOR, LS# 42425

SCALE: 1"=400'  
JOB NO. 23-100  
DATE: 12-8-2023  
CALC BY: GAB  
DRAWN BY: GAB  
CHECKED BY: GAB  
SHEET 1 OF 1

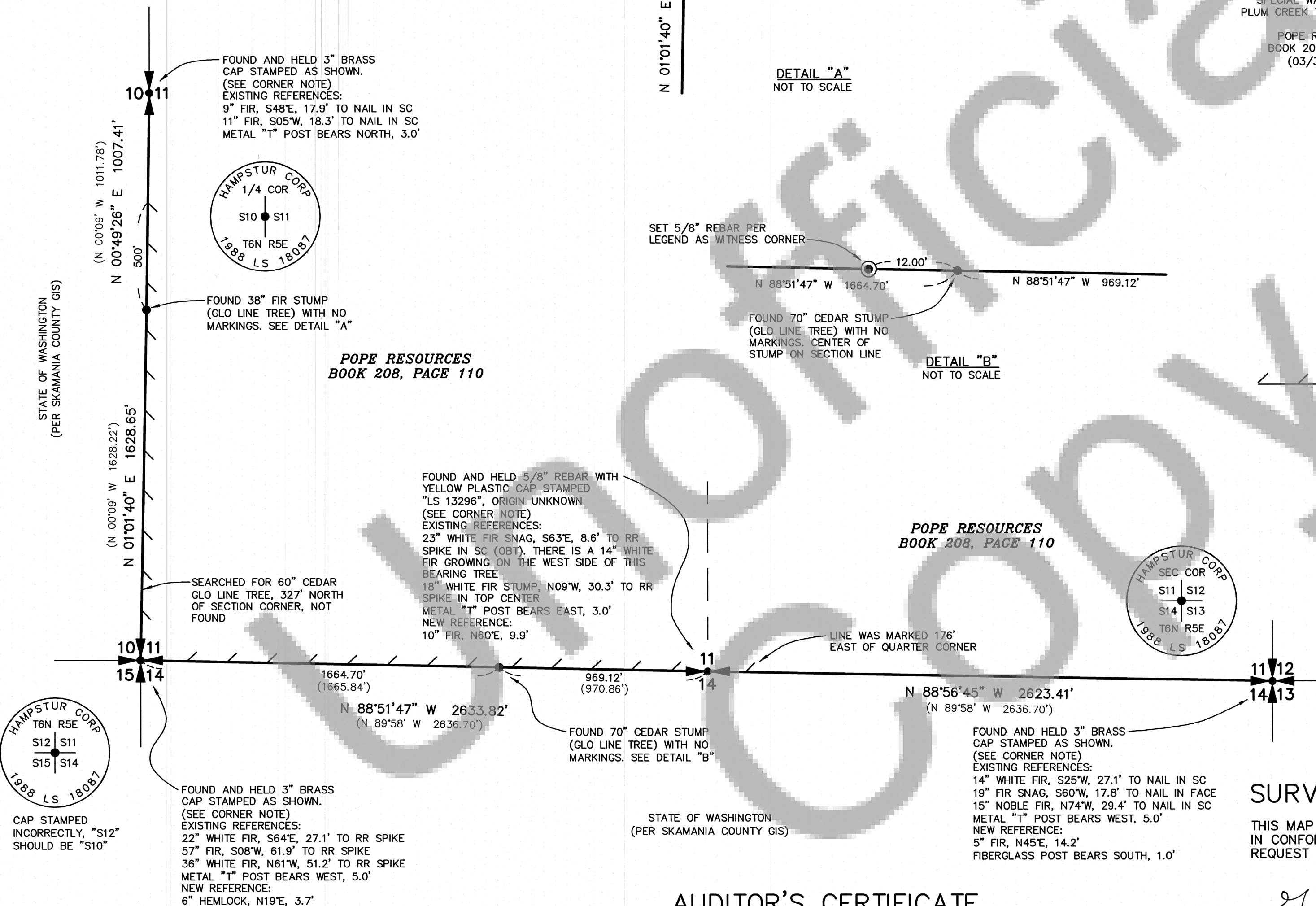
**BROWN**  
SURVEYING PLLC  
PO BOX 414  
AMBOY, WA 98601  
360-600-0846  
ebrownsurveying@gmail.com



DETAIL "A"  
NOT TO SCALE



DETAIL "B"  
NOT TO SCALE



# AUDITOR'S CERTIFICATE

FILED FOR RECORD THIS 18th DAY OF December 2023 AT  
1:17 P.M. IN BOOK — OF SURVEYS AT PAGE —  
AT THE REQUEST OF BROWN SURVEYING, PLLC.  
2023-001860  
AUDITOR'S FILE NUMBER

Markus J. Jankaus  
DEPUTY COUNTY AUDITOR

BROWN SURVEYING, PLLC MAKES NO WARRANTIES AS TO MATTERS OF UNWRITTEN TITLE SUCH AS ADVERSE POSSESSION, ACQUIESCENCE, ESTOPPLE, ETC.

A FIELD TRAVERSE WAS PERFORMED USING A NIKON NIVO 3.0C THREE SECOND TOTAL STATION WITH TDS DATA COLLECTION SYSTEM. THE FIELD TRAVERSE MET THE MINIMUM STANDARDS FOR SURVEYS AS DESIGNATED IN WAC 332-130-090. ALL CORNERS NOTED AS FOUND WERE VISITED ON 10/27 THROUGH 11/29/2023.