



RETURN TO:
Erielle Lamb
987 McClellan Road
Vancouver, WA 98661

LAND CORNER RECORD

THIS FORM IS FOR RECORDING A PLSS CORNER MONUMENT AND ACCESSORY INFORMATION WHEN A RECORD OF SURVEY IS NOT REQUIRED, PER RCW 58.09.040(2). (UPDATED 8/01/2019. DO NOT REVISE THIS FORM)

CERTIFICATE: THIS LAND CORNER RECORD CORRECTLY REPRESENTS WORK PERFORMED BY ME OR UNDER MY DIRECTION IN CONFORMANCE WITH THE SURVEY RECORDING ACT.

GRANTOR: NAME: Erielle Lamb

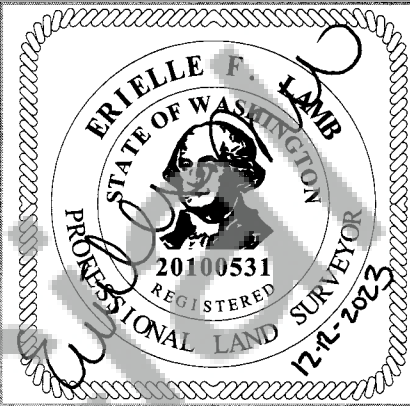
SIGNATURE:

CERTIFICATE NO.: 20100531

ADDRESS: 987 McClellan Road
Vancouver, WA 98661

GRANTEE: PUBLIC

SEAL/SIGNATURE/DATE



INDEXING INFORMATION: 1/4 1/4 SEC: TWP: 4N RGE: 9E

CORNER CODE, SEE DIAGRAM BELOW: U-17

ADDITIONAL IDENTIFIER: (PLSS CORNER NAME) South 1/16 Corner of Section 26 and 27

WPCS: N: E:

ZONE: DATE OF OBSERVATION: 5/24/2023

BLM GCDB POINT IDENTIFIER (OPTIONAL): 500220

PROVIDE THE FOLLOWING INFORMATION ON ATTACHMENTS, AS REQUIRED BY RCW 58.09.060(2)

- (a) AN ACCURATE DESCRIPTION AND LOCATION, IN REFERENCE TO THE CORNER POSITION, OF ALL MONUMENTS AND ACCESSORIES FOUND AT THE CORNER;
- (b) AN ACCURATE DESCRIPTION AND LOCATION, IN REFERENCE TO THE CORNER POSITION, OF ALL MONUMENTS AND ACCESSORIES PLACED OR REPLACED AT THE CORNER;
- (c) BASIS OF BEARINGS USED TO DESCRIBE OR LOCATE SUCH MONUMENTS OR ACCESSORIES;
- (d) COROLLARY INFORMATION THAT MAY BE HELPFUL TO RELOCATE OR IDENTIFY THE CORNER POSITION.

	1	2	3	4	5	6	7	8	9	10	11	12	13	14	15	16	17	18	19	20	21	22	23	24	25	
A																										A
B																										B
C			6				5					4				3				2				1		C
D																										D
E																										E
F																										F
G			7				8					9				10				11				12		G
H																										H
J																										J
K																										K
L			18				17					16				15				14				13		L
M																										M
N																										N
O																										O
P			19				20					21				22				23				24		P
Q																										Q
R																										R
S																										S
T			30				29					28				27				26				25		T
U																										U
V																										V
W																										W
X			31				32					33				34				35				36		X
Y																										Y
Z																										Z
	1	2	3	4	5	6	7	8	9	10	11	12	13	14	15	16	17	18	19	20	21	22	23	24	25	

LAND CORNER RECORD ATTACHMENT

CORNER INFORMATION: DISCUSS THE HISTORY, EVIDENCE FOUND, AND PERPETUATION OF THE CORNER. SHOW THE REFERENCES; PROVIDE THE DATE OF THE FIELD WORK; IF APPLICABLE, MAKE REFERENCE TO A MAP OF RECORD AND/OR THE FIELD BOOK/PAGE NO. USE ADDITIONAL SHEETS AS NEEDED.

History:

(1971)- Visited by Jerry Olson (WA PLS#9025) in August 1971. Recorded by USFS Corner Card. Set 1/2" Iron Rod. They referenced the following bearing objects:

36" Fir Snag, bears S 70° E, 8.88' distance. Concrete nail in blaze.

16" Fir Snag, bears S 17° E, 10.17' distance. Concrete nail in blaze.

30" Fir, bears S 51° W, 9.54' distance. Concrete nail in blaze.

(1982)- Field work performed December 1982, by Roy Gaylord (WA PLS#18731) of Terra Surveying set a 2-1/2"x30" Aluminum Pipe with a 2-1/2" Aluminum Cap. The corner was filed in book 4 of 9 of monuments at page 24 with the Skamania County auditor. An LCR was also filed under Skamania County auditor #95284. The following bearing trees and corner evidence were described:

Found 5/8"x30" Iron Rod, bearing N 88° W a distance of 1.99' from set point. Iron Rod set by Olsen Engineering in 1971.

The following bearing trees were recorded as new references:

A 15" Douglas Fir, Bears N 23° W, 17.45' distance.

A 15" Douglas Fir, Bears S 52° E, 26.67' distance.

Evidence:

(2023)- R. Ellis of USDA Forest Service, Columbia Lands Zone on 5/24/2023 recovered the South 1/16 corner monument to S26 and S27 as set in 1982 by Roy Gaylord of Terra Surveying. 6" red bands were painted on all new and old bearing trees.

Found 2-1/2" Aluminum Cap on 2-1/2" Aluminum Pipe, 0.9' above the ground for the South 1/16 corner of S26 and S27. The following bearing objects were recovered:

A 5/8" Iron Rod, 2" above the ground, bears N 88° W, 1.99' distance. Iron Rod set by Olsen Engineering in 1971.

A 16" Fir Snag, Bears S 17° E, 10.17' distance from old Olsen Iron Rod with nail in blaze.

A 36" Fir Snag, Bears S 70° E, 8.88' distance from old Olsen Iron Rod with nail in blaze.

A 17" Douglas Fir, Bears S 52° E, 26.67' distance with healed blaze.

A 18" Douglas Fir, Bears N 23° W, 17.45' distance with healed blaze.

Perpetuation:

Referenced 41" Douglas Fir (30" in 1971 by Jerry Olson) that was previously taken as a bearing tree for the old Olsen monument to the new 1982 Terra Monument. Tree bears S 50° W, 10.70' distance, attached new bearing tree and Land Survey Monument signs, distances measured to old blaze face.

LAND CORNER RECORD ATTACHMENT

CORNER INFORMATION: DISCUSS THE HISTORY, EVIDENCE FOUND, AND PERPETUATION OF THE CORNER. SHOW THE REFERENCES; PROVIDE THE DATE OF THE FIELD WORK; IF APPLICABLE, MAKE REFERENCE TO A MAP OF RECORD AND/OR THE FIELD BOOK/PAGE NO. USE ADDITIONAL SHEETS AS NEEDED.

