

RETURN TO:
Erielle Lamb
987 McClellan Rd
Vancouver, WA
98661

Skamania County, WA
Total:\$0.00
LCR
Pgs=3
Request of: ERIELLE LAMB

2023-001138
08/14/2023 11:47 AM

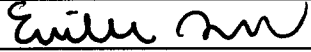

00016564202300011380030038

LAND CORNER RECORD

THIS FORM IS FOR RECORDING A PLSS CORNER MONUMENT AND ACCESSORY INFORMATION WHEN A RECORD OF SURVEY IS NOT REQUIRED, PER RCW 58.09.040(2). (UPDATED 8/01/2019. DO NOT REVISE THIS FORM)

CERTIFICATE: THIS LAND CORNER RECORD CORRECTLY REPRESENTS WORK PERFORMED BY ME OR UNDER MY DIRECTION IN CONFORMANCE WITH THE SURVEY RECORDING ACT.

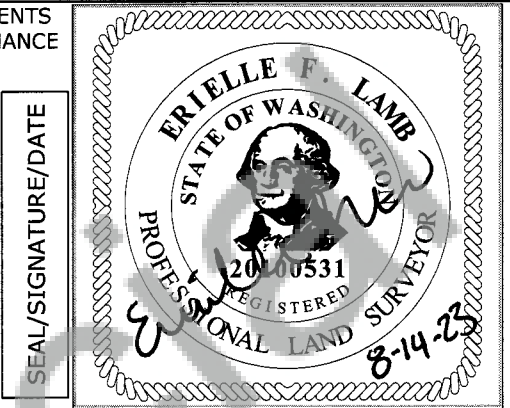
GRANTOR: Erielle Lamb
NAME:

SIGNATURE: 

CERTIFICATE NO.: 20100531

ADDRESS: 987 McClellan Rd
Vancouver, WA 98661

GRANTEE: PUBLIC



INDEXING INFORMATION: 1/4 1/4 SEC: S34, S33, S4, S3 TWP: 3-4N RGE: 9E

CORNER CODE, SEE DIAGRAM BELOW: Z-13

ADDITIONAL IDENTIFIER: (PLSS CORNER NAME) Section Cor. to S34, S33, S4, and S3

WPCS: N: E:

ZONE: DATE OF OBSERVATION: 4/11/2023

BLM GCDB POINT IDENTIFIER (OPTIONAL): 400100

PROVIDE THE FOLLOWING INFORMATION ON ATTACHMENTS, AS REQUIRED BY RCW 58.09.060(2)

- (a) AN ACCURATE DESCRIPTION AND LOCATION, IN REFERENCE TO THE CORNER POSITION, OF ALL MONUMENTS AND ACCESSORIES FOUND AT THE CORNER;
- (b) AN ACCURATE DESCRIPTION AND LOCATION, IN REFERENCE TO THE CORNER POSITION, OF ALL MONUMENTS AND ACCESSORIES PLACED OR REPLACED AT THE CORNER;
- (c) BASIS OF BEARINGS USED TO DESCRIBE OR LOCATE SUCH MONUMENTS OR ACCESSORIES;
- (d) COROLLARY INFORMATION THAT MAY BE HELPFUL TO RELOCATE OR IDENTIFY THE CORNER POSITION.

	1	2	3	4	5	6	7	8	9	10	11	12	13	14	15	16	17	18	19	20	21	22	23	24	25	
A																										A
B																										B
C			6				5					4				3				2				1		C
D																										D
E																										E
F																										F
G																										G
H																										H
J																										J
K																										K
L																										L
M																										M
N																										N
O																										O
P																										P
Q																										Q
R																										R
S																										S
T																										T
U																										U
V																										V
W																										W
X																										X
Y																										Y
Z																										Z
	1	2	3	4	5	6	7	8	9	10	11	12	13	14	15	16	17	18	19	20	21	22	23	24	25	

LAND CORNER RECORD ATTACHMENT

CORNER INFORMATION: DISCUSS THE HISTORY, EVIDENCE FOUND, AND PERPETUATION OF THE CORNER. SHOW THE REFERENCES; PROVIDE THE DATE OF THE FIELD WORK; IF APPLICABLE, MAKE REFERENCE TO A MAP OF RECORD AND/OR THE FIELD BOOK/PAGE NO. USE ADDITIONAL SHEETS AS NEEDED.

History:

(1880) The U.S. General Land Office Contracted with David Wilson Lewis Shelton Deputy Surveyor on May 17th, 1880 and commenced fieldwork from June 2nd through June 19th 1880. Set a Fir Post 4' long 4" by 4" square for corner to S34, S33, S4, and S3. The following bearing trees were taken:

A 18" Fir, bears N 52° 30' E, 25 links distance.

A 15" Fir, bears N 45° W, 25 links distance.

A 4" Willow, bears S 76° W, 16 links distance.

A 24" Fir, bears S 56° E, 70 links distance.

(1892) The corner was revisited by Deputy Surveyor Jacob Richardson in October of 1892 under contract 383. He found a post 4" square, 24" above the ground, marked "T4NS34" on NE face, "R9ES3" on SE face, "T3NS4" on SW face, and "S33" on NW face with 3 notches on East and West edges from which:

A 18" Fir, bears N 52° 30' E, 25 links distance, marked "T4NR9ES34BT"

A 24" Fir, bears S 56° E, 70 links distance, marked "T3NR9ES3BT"

A 4" Willow, bears S 76° W, 16 links distance, marked "T3NR9ES4BT"

A 15" Fir, bears N 45° W, 25 links distance, marked "T4NR9ES33BT"

(1901) The corner was revisited by Deputy Surveyor Frank Xavier Gesner in November 1901 under contract number 571. He found a Fir Post 3" above ground, 3" square, firmly set and marked "T4NS34" on NE face, "T3NS3" on SE face, "R9ES4" on SW face, and "S33" on the NW face with 3 notches on East and West edges from which:

A 20" Red Fir, bears N 52° 30' E, 25 links distance, marked "T4NR9ES34BT"

A 30" Red Fir, bears S 56° E, 70 links distance, marked "T3NR9ES3BT"

A 6" Willow, bears S 76° W, 16 links distance, marked "T3NR9ES4BT"

A 18" Red Fir, bears N 45° W, 25 links distance, marked "T4NR9ES33BT"

(1964) The corner was visited on April 27th 1964 by Millard and Hamre of the U.S. Forest Service. Found 3" by 3" wood post, 28" above ground in fair condition with no markings (Set by the State). The following bearing trees were recorded:

A 30" Fir, bears N 52° E, 17' distance, with blaze and scribing visible.

A 4" Fir, bears N 45° W 17' distance, with blaze.

A Downed Snag, bears S 56° E (Set by State).

(1970) Field work preformed September 21st 1970 by C.E. Whitten and Merl Lucas of the DNR. Set a standard DNR concrete monument. Found two bearing trees with scribing and an iron pipe. Set monument at position of iron pipe under down log. Set three tag references:

A 36" Fir, bears N 60° E, 15.41' distance

A 12" Hemlock, bears S 46° E, 27.19' distance

A 6" Fir, bears S 62° W, 21.26' distance

Notes: Distances to aluminum spikes at base of trees

(1988) The corner was visited on April 7th 1988 by Terry Trantow of Trantow Surveying. Recorded with the Skamania County Auditor in 1988 in Book 3 of 9 of monuments at pg 37. An LCR was also filed under Skamania County auditor file #105269. Found DNR standard concrete monument with brass cap, one BT and two witness trees

A 36" Douglas Fir stump with 18"x18" face, bears N 62° E, 17.05' to center of stump; USFS witness tag.

A 6" Western Hemlock, bears N 18° E, 14.50' to nail at center of tree; not scribed.

A 3" Western Hemlock, bears S 40° W, 28.32' to nail at center of tree; not scribed.

Evidence:

(2023)- R. Ellis of USDA Forest Service, Columbia Lands Zone on 4/11/2023 recovered the Section corner monument to S33, S34, S4, and S3 as set in June 1970 by C.E. Whitten of the DNR. Found a 3" 1970 DNR brass cap on 3.5" by 4" concrete pedestal, 9 1/2" above the ground. The S 62° W bearing tree is now dead and down. 6" red bands were painted on all new and old bearing trees and new 54-9 and 54-3 signs were attached if necessary. The following bearing trees were recovered:

A 38" Douglas Fir, bears N 52° E, 17.00' distance, with healed blaze. The WA DNR recorded the bearing and distances of the tree to be N 60° E and 15.41'.

A 16" Hemlock, bears S34° E, 23.4' distance, With healed blaze. The WA DNR recorded the bearing and distances of the tree to be S 46° E, 27.19'.

A 21" Hemlock, bears S 71° W, 23.8' distance, The WA DNR recorded the bearing and distances of the tree to be S 62° W, 21.26'.

A 6" Dead and Down Fir, bears S 62° W, 21.26' distance.

Notes: Corner lies on a Eastward slope, 150' East of old timber road.

Perpetuation:

New 14" Douglas Fir, bears N 12° W, 47.1' distance, scribed "BTT4NR9ES33" with attached 54-9 LSM and 54-3 BT tag, 2.5" PK Nail with 2" diameter brass washer marked WA PLS#20100531 set right side center from monument 4" above ground.

LAND CORNER RECORD ATTACHMENT

CORNER INFORMATION: DISCUSS THE HISTORY, EVIDENCE FOUND, AND PERPETUATION OF THE CORNER. SHOW THE REFERENCES; PROVIDE THE DATE OF THE FIELD WORK; IF APPLICABLE, MAKE REFERENCE TO A MAP OF RECORD AND/OR THE FIELD BOOK/PAGE NO. USE ADDITIONAL SHEETS AS NEEDED.

