

CURVE DATA				
P.I. STATION	DELTA	RADIUS	TANGENT	LENGTH
SR LINE 203+58.93	29°03'50.40" RT	954.930'	247.531'	484.400'
SR LINE 209+92.11	11°34'58.80" LT	1909.859'	193.710'	386.100'
WR LINE 11+67.16	32°31'48.00" LT	572.958'	167.165'	325.300'

SURVEYOR'S NARRATIVE

THE PURPOSE OF THIS MONUMENTATION MAP IS TO SET NEW OFFSET MONUMENTS ALONG THE STATE ROUTE 14 CENTERLINE AND THE WIND RIVER ROAD CENTERLINE ALIGNMENTS.

THE NEW MONUMENTS WERE SET AFTER THE COMPLETION OF THE WIND RIVER ROAD INTERSECTION IMPROVEMENTS PROJECT IN THE SPRING OF 2020.

THE SR14 AND WIND RIVER ROAD RIGHT-OF-WAY CENTERLINES WERE RESOLVED PER THE AMENDED PRE-CONSTRUCTION RECORD OF SURVEY PREPARED BY AKS ENGINEERING AND FORESTRY, LLC (SEE SURVEY REFERENCE BELOW), AND APPROVED AND ADOPTED ON WSDOT RIGHT OF WAY PLAN (SEE PLAN REFERENCE BELOW).

ALL CADASTRAL DATA NOTED IS PER THE AMENDED PRE-CONSTRUCTION SURVEY.

MONUMENTS NOTED HEREON WERE NOT DESTROYED DURING CONSTRUCTION.

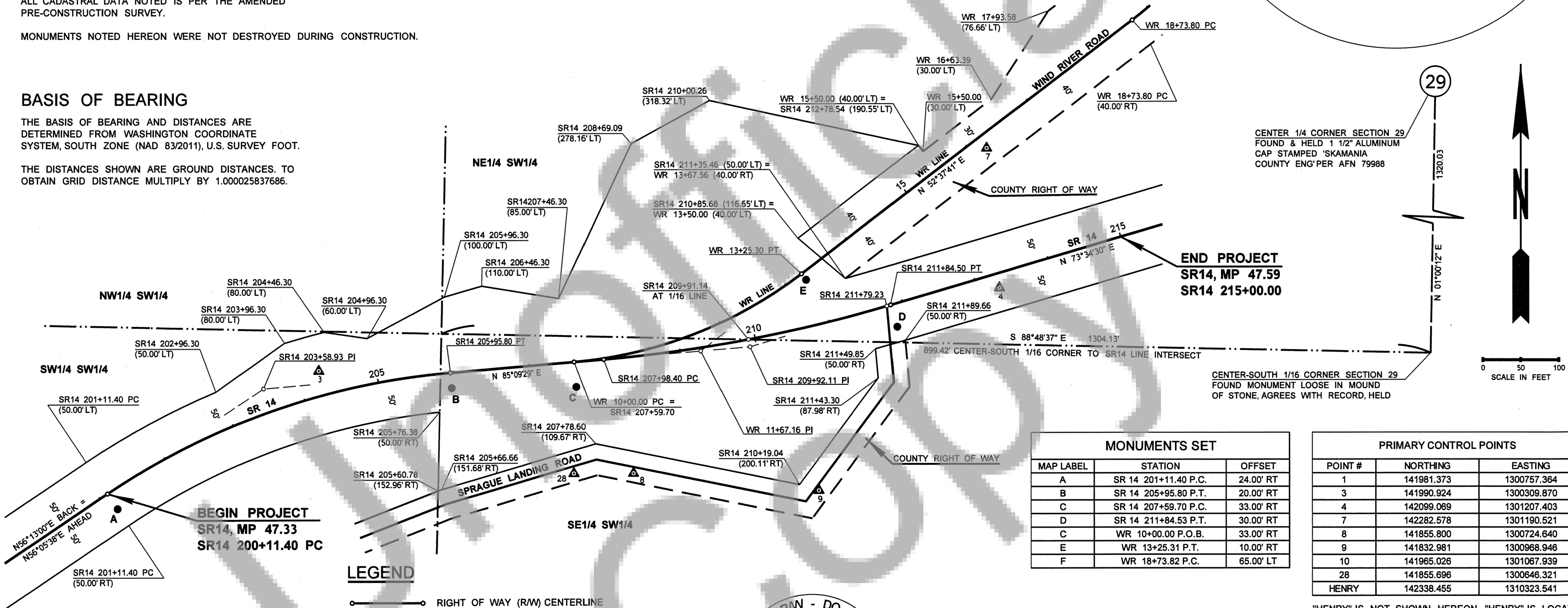
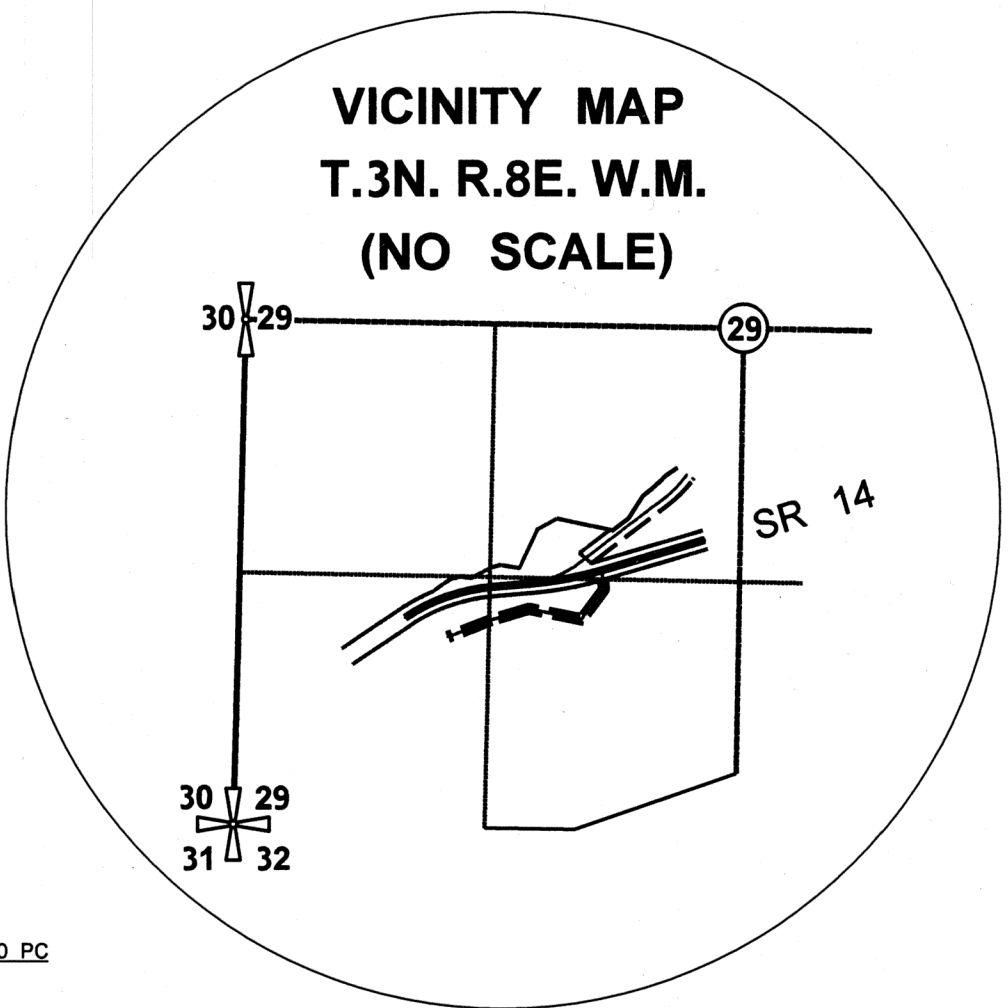
BASIS OF BEARING

THE BASIS OF BEARING AND DISTANCES ARE DETERMINED FROM WASHINGTON COORDINATE SYSTEM, SOUTH ZONE (NAD 83/2011), U.S. SURVEY FOOT.

THE DISTANCES SHOWN ARE GROUND DISTANCES. TO OBTAIN GRID DISTANCE MULTIPLY BY 1.000025837686.

MONUMENT MAP

IN THE SW1/4 SW1/4, NW1/4 SW1/4, NE1/4 SW1/4, AND THE SE1/4 SW1/4 OF SECTION 29, TOWNSHIP 3 NORTH, RANGE 8 EAST, WILLAMETTE MERIDIAN PORTION OF CITY OF CARSON, SKAMANIA COUNTY, WASHINGTON



MONUMENTS SET		
MAP LABEL	STATION	OFFSET
A	SR 14 201+11.40 P.C.	24.00' RT
B	SR 14 205+95.80 P.T.	20.00' RT
C	SR 14 207+59.70 P.C.	33.00' RT
D	SR 14 211+84.53 P.T.	30.00' RT
E	WR 10+00.00 P.O.B.	33.00' RT
F	WR 13+25.31 P.T.	10.00' RT
	WR 18+73.82 P.C.	65.00' LT

PRIMARY CONTROL POINTS		
POINT #	NORTHING	EASTING
1	141981.373	1300757.364
3	141990.924	1300309.870
4	142099.069	1301207.403
7	142282.578	1301190.521
8	141855.800	1300724.640
9	141832.981	1300968.946
10	141965.026	1301067.939
28	141855.696	1300646.321
HENRY	142338.455	1310323.541

"HENRY" IS NOT SHOWN HEREON. "HENRY" IS LOCATED NEAR THE INTERSECTION OF HOT SPRINGS AVE & SR 14

COORDINATES SHOWN ARE WASHINGTON COORDINATE SYSTEM, SOUTH ZONE (NAD 83/2011), US SURVEY FOOT

SURVEY REFERENCE

SEE AMENDED RECORD OF SURVEY RECORDED IN SKAMANIA COUNTY RECORDS ON JULY 17, 2017 UNDER AFN 2017001432.

PLAN REFERENCE

SEE WSDOT RIGHT OF WAY PLAN TITLED 'SR 14 WIND RIVER VICINITY' APPROVED AND ADOPTED JUNE 15, 2018

- LEGEND**
- RIGHT OF WAY (R/W) CENTERLINE
 - COUNTY RIGHT OF WAY
 - HIGHWAY RIGHT OF WAY
 - QUARTER SECTION LINE
 - SIXTEENTH SECTION LINE
 - WSDOT CONTROL POINT
 - SET WSDOT MONUMENT
 - POINT OF INTERSECTION
 - POINT OF CURVATURE
 - POINT OF TANGENCY
 - STATE ROUTE
 - WIND RIVER
 - MP
 - WSDOT
 - WASHINGTON STATE DEPARTMENT OF TRANSPORTATION



SURVEYOR'S CERTIFICATE

THIS MAP CORRECTLY REPRESENTS A SURVEY MADE BY ME OR UNDER MY DIRECTION IN CONFORMANCE WITH THE REQUIREMENTS OF THE SURVEY RECORDING ACT AT THE REQUEST OF WSDOT IN AUGUST 2022.

Michael Mashburn
MICHAEL LEE MASHBURN, PLS, CERTIFICATE NUMBER 54152

AUDITOR'S CERTIFICATE

FILED FOR RECORD THIS 10th DAY OF August, 2022 AT 11:39 AM IN BOOK 2 OF SURVEYS AT PAGE 2 AT THE REQUEST OF WASHINGTON STATE DEPARTMENT OF TRANSPORTATION. AUDITOR'S FILE NO. 2022-001624

Michael Mashburn
COUNTY DEPUTY AUDITOR
AUDITOR'S NUMBER

MAIL TO:

SW REGION HEADQUARTERS
11018 NE 51ST CIRCLE
MAIL STOP S-15
VANCOUVER, WA 98682-6686



Washington State
Department of Transportation
MONUMENT MAP

JOB REF NO	DRAWN BY:
009445	MLM
	CHECKED BY:
	AKM
SHEET	SCALE:
1	1" = 100'
OF	DATE:
1	AUGUST 5, 2022
SHEETS	

WSDOT MAKES NO WARRANTY AS TO MATTERS OF UNWRITTEN TITLE SUCH AS ADVERSE POSSESSION, ESTOPPEL, ACQUESCENCE, ETC.