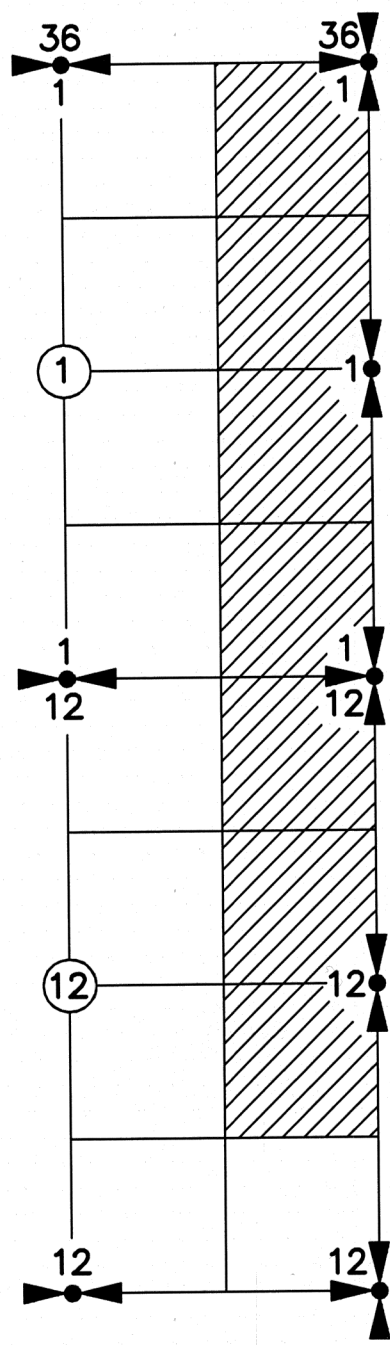
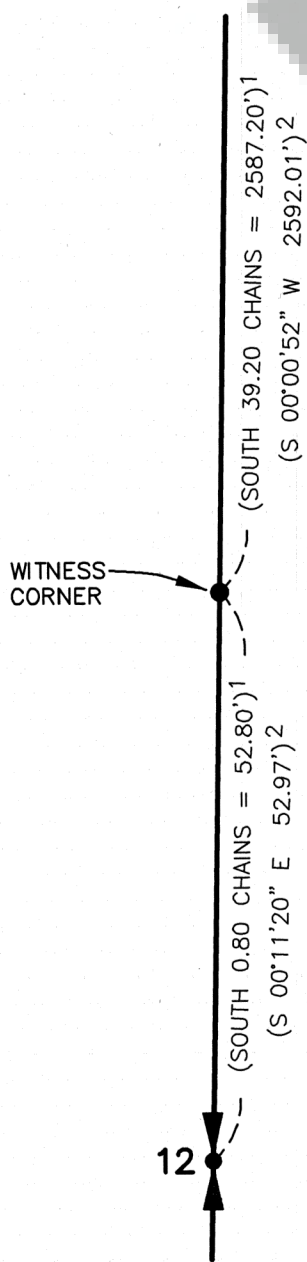


NARRATIVE

THE PURPOSE OF THIS SURVEY WAS TO POST THE EAST LINE OF SECTION 1 AND THAT PORTION OF THE EAST LINE OF SECTION 12 AS SHOWN FOR THE "POPE RESOURCES TRACT" CITED. CONTROLLING CORNERS SHOWN WERE TIED BY CONVENTIONAL TRAVERSE METHODS ORIGINATING FROM NEARBY "RTK GPS POINTS". THE GPS POINTS WERE COLLECTED ON "WASHINGTON STATE PLANE COORDINATE SYSTEM, SOUTH ZONE" (NAD 83/2011) WHICH WAS THE BASIS OF BEARING FOR THIS SURVEY. CLOSED LOOP TRAVERSES WERE RAN ALONG THE LINES SHOWN AS MARKED BEGINNING AND ENDING ON SAID GPS POINTS. WE WERE ABLE TO RECOVER CARSONITE POST SET IN ROS 2-72 FOR THE PORTION OF LINE SOUTH OF THE NORTHEAST CORNER OF SECTION 12, THEREFORE WE DID NOT TRAVERSE THIS LINE OR VERIFY THE POST LOCATIONS. THE EXISTING POST FOUND WERE HELD FOR LINE. DISTANCES SHOWN ARE GRID DISTANCES, TO OBTAIN GROUND DISTANCES, DIVIDE DISTANCES BY THE COMBINED SCALE FACTOR OF 0.99984894. NO NEW CORNERS WERE SET DURING THIS SURVEY.



SECTION DIAGRAM
NOT TO SCALE



DETAIL "A"
NOT TO SCALE

BROWN SURVEYING, PLLC MAKES NO WARRANTIES AS TO MATTERS OF UNWRITTEN TITLE SUCH AS ADVERSE POSSESSION, ACQUIESCENCE, ESTOPPLE, ETC.

A FIELD TRAVERSE WAS PERFORMED USING A NIKON NIVO 3.0C THREE SECOND TOTAL STATION WITH TDS DATA COLLECTION SYSTEM. THE FIELD TRAVERSE MET THE MINIMUM STANDARDS FOR SURVEYS AS DESIGNATED IN WAC 332-130-090. ALL CORNERS NOTED AS FOUND WERE VISITED ON 11/16/2021 THRU 06/14/2022.

FOUND AND HELD BLM 2-1/2" IRON PIPE WITH 3" BRASS CAP AS SHOWN IN SURVEY REFERENCE 1 (SEE LCR BOOK 6/6, PAGE 18) EXISTING REFERENCES:
19" FIR WITH HEALED BLAZE, N48°E, 2.64' TO RRS AT SC
11" FIR STUMP WITH HEALED BLAZE, S26°W, 23.10' TO RRS AT TOP CENTER
17" FIR WITH HEALED BLAZE, S51°W, 21.78' TO RRS AT SC
17" FIR SNAG WITH HEALED BLAZE, N26°W, 10.56' TO RRS AT SC
NEW REFERENCE:
FIBERGLASS POST, SOUTH, 1.0'

POPE RESOURCES
AFN 2007167218

FOUND AND HELD BLM 2-1/2" IRON PIPE WITH 3" BRASS CAP AS SHOWN IN SURVEY REFERENCE 1 EXISTING REFERENCES:
34" FIR STUMP WITH HEALED BLAZE, S26°W, 7.10' TO RRS AT TOP CENTER
20" FIR STUMP WITH HEALED BLAZE, N46°W, 37.40' TO RRS AT TOP CENTER
METAL "T" POST, NORTH, 4.0'
NEW REFERENCE:
8" FIR, S63°E, 22.70'

POPE RESOURCES
AFN 2007167218

FOUND AND HELD 2-1/2" BRASS CAP AS SHOWN IN ROS 2-72 (SEE LCR BOOK 6/6, PAGE 11) EXISTING REFERENCES:
25" HEMLOCK WITH HEALED BLAZE, S02°E, 7.60' TO NAIL AT SC
35" FIR WITH HEALED BLAZE, S67°W, 14.70' TO NAIL AT SC
22" HEMLOCK WITH HEALED BLAZE, N49°W, 29.08' TO NAIL AT SC
METAL "T" POST, NORTH, 3.0'
CARSONITE POST, NORTH, 3.50'
CARSONITE POST, SOUTH, 2.60'

POPE RESOURCES
AFN 2007167218

(S 00°11'20" E 52.97')²
(SOUTH 0.80 CHAINS = 52.80')¹

FOUND BLM 2-1/2" IRON PIPE WITH 3" BRASS CAP, AT WITNESS CORNER, NOT TIED DURING THIS SURVEY EXISTING REFERENCES:
17" FIR SNAG WITH HEALED BLAZE, N14°W, 8.80' TO NAIL IN SC
METAL "T" POST, NORTH, 2.20'
CARSONITE POST, EAST, 1.50'
CARSONITE POST, WEST, 1.50'
NEW REFERENCE:
14" FIR, N55°W, 38.60'

FOUND 2-1/2" BRASS CAP AS SHOWN IN ROS 2-72, NOT TIED DURING THIS SURVEY (SEE LCR BOOK 6/6, PAGE 13) EXISTING REFERENCES:
40" FIR WITH HEALED BLAZE, SOUTH, 15.0'
20" FIR WITH HEALED BLAZE, N11°W, 13.5'
CARSONITE POST, NORTH, 3.0'
CARSONITE POST, EAST, 3.5'
FIBERGLASS POST, WEST, 0.20'

R6E
R7E
36
31
1
6
T7N
T6N

S 01°13'28" W 2655.57'
(SOUTH 40.15 CHAINS = 2649.9')
S 00°56'49" W 2645.82'
(SOUTH 40.00 CHAINS = 2640.1')

S 00°11'20" E 1324.18'
(S 00°11'20" E 52.97')²
(SOUTH 0.80 CHAINS = 52.80')¹

(S 00°11'20" E 52.97')²
(SOUTH 0.80 CHAINS = 52.80')¹

(S 00°11'20" E 1324.18')
(S 00°11'20" E 52.97')²
(SOUTH 0.80 CHAINS = 52.80')¹

R6E
R7E

RECORD OF SURVEY

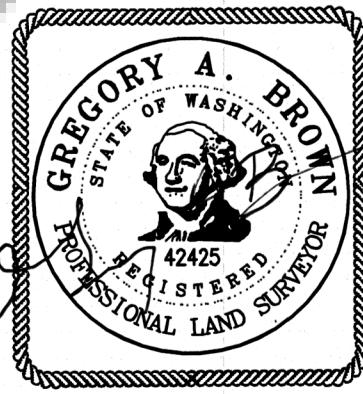
THE EAST LINE OF SECTION 1
AND THE EAST LINE OF THE
NE 1/4 AND NE 1/4 SE 1/4
OF SECTION 12, T6N, R6E, W.M.
SKAMANIA COUNTY, WA.

DEED REFERENCE
STATUTORY WARRANTY DEED
POPE RESOURCES
TO
POPE RESOURCES
AFN 2007167218
(8/10/2007)

SURVEY REFERENCE
1) BLM, FLOYD A. BROOKS, SPECIAL INSTRUCTIONS
DATED 8/15/1961 UNDER GROUP NUMBER 231
AND 5/10/1966 UNDER GROUP NUMBER 238
2) ROS 2-72

UNITED STATES FOREST SERVICE
(PER SKAMANIA GIS)

- LEGEND:
- INDICATES MONUMENT FOUND
 - () INDICATES RECORD INFORMATION PER SURVEY REFERENCE NUMBER
 - / — INDICATES LINE MARKED WITH 1/2" x 72" FIBER GLASS RODS WITH RED RIBBON. TREES ALONG LINE BLAZED AND PAINTED WITH BLUE PAINT
 - X X X INDICATES CARSONITE POSTS AS SET IN ROS 2-72, FOUND AND UTILIZED FOR MARKING LINE, USED RED RIBBON AND BLAZED AND PAINTED TREES WITH BLUE PAINT
- ROS RECORD OF SURVEY
AFN AUDITOR'S FILE NUMBER
BLM BUREAU OF LAND MANAGEMENT
GPS GLOBAL POSITIONING SYSTEM
RTK REAL TIME KINEMATIC
SC SIDE CENTER
RRS RAILROAD SPIKE



REFERENCE TREE NOTE
NEW REFERENCE TREES WERE MEASURED TO A 6" NAIL SET IN SIDE CENTER OF TREE. ALSO PLACED A BEARING TREE SIGN AND 4 NOTCHES FACING TOWARD THE CORNER. BEARINGS NOTED WERE TAKEN WITH A HAND HELD COMPASS WITH THE DECLINATION SET TO 16° EAST.

AUDITOR'S CERTIFICATE
FILED FOR RECORD THIS 9th DAY OF August 2022 AT
1:30 P.M. IN BOOK — OF SURVEYS AT PAGE —
AT THE REQUEST OF BROWN SURVEYING, PLLC.
2022-0611
AUDITOR'S FILE NUMBER
Wishia Dicklaus
DEPUTY COUNTY AUDITOR

SURVEYOR'S CERTIFICATE
THIS MAP CORRECTLY REPRESENTS A SURVEY MADE BY ME OR UNDER MY DIRECTION IN CONFORMANCE WITH THE REQUIREMENTS OF THE SURVEY RECORDING ACT AT THE REQUEST OF RAYONIER FOREST RESOURCES L.P. IN JUNE, 2022

LAB 8/5/2022
GREGORY A. BROWN, PROFESSIONAL LAND SURVEYOR, LS# 42425

SCALE: 1"=500'
JOB NO. 21-160
DATE: 8-5-2022
CALC BY: GAB
DRAWN BY: TJC
CHECKED BY: GAB
SHEET 1 OF 1

BROWN
SURVEYING PLLC
PO BOX 414
AMBOY, WA 98601
360-600-0846
ebrownsurveying@gmail.com