

# **NARRATIVE**

THE PURPOSE OF THIS SURVEY WAS TO POST THAT PORTION OF THE SOUTH LINE OF SECTION 3 AND THOSE PORTIONS OF THE NORTH LINE OF SECTION 2 AND 3 AS SHOWN FOR THE "CHILTON INC. TRACT" CITED. A SERIES OF "RTK GPS POINTS" WERE SET IN PAIRS AROUND BOTH SECTIONS AND USED TO RUN CLOSED LOOP TRAVERSES ALONG THE LINES SHOWN AS MARKED. THE GPS POINTS WERE COLLECTED ON "WASHINGTON STATE PLANE COORDINATE SYSTEM, SOUTH ZONE" (NAD 83/2011) WHICH WAS THE BASIS OF BEARING FOR THIS SURVEY. DISTANCES SHOWN ARE GROUND DISTANCES. NO NEW MONUMENTS WERE ESTABLISHED DURING THIS SURVEY. THE MODEL OF ROS 2-257 WAS CALCULATED AND POSITIONED ON THE HELD MONUMENT AT THE SOUTH QUARTER CORNER OF SECTION 3. I THEN ROTATED SAID MODEL AROUND THE TIED MONUMENT AT THE NORTHEAST CORNER OF SECTION 2. THE DIFFERENCE IN THE RECORD VERSUS THE MEASURED DISTANCE WAS ONLY 0.09'. I THEN TIED MONUMENT NUMBER 1 FOR A CHECK AND MISSED BY 0.58' IN EASTING AND WITHIN A 0.01' IN NORTHING. WITH THESE 3 CORNERS AS MY FOUNDATION I WAS ABLE TO THEN CALCULATE THE POSITIONS OF THE MONUMENTS AS SHOWN ON DNR MAP "FM 353" AND ROS 2-257 FOR THE PURPOSES OF THIS SURVEY. REFER TO THE ACTIVE LANDSLIDE NOTE ON SHEET 2 OF THIS SURVEY.

## **DEED REFERENCE**

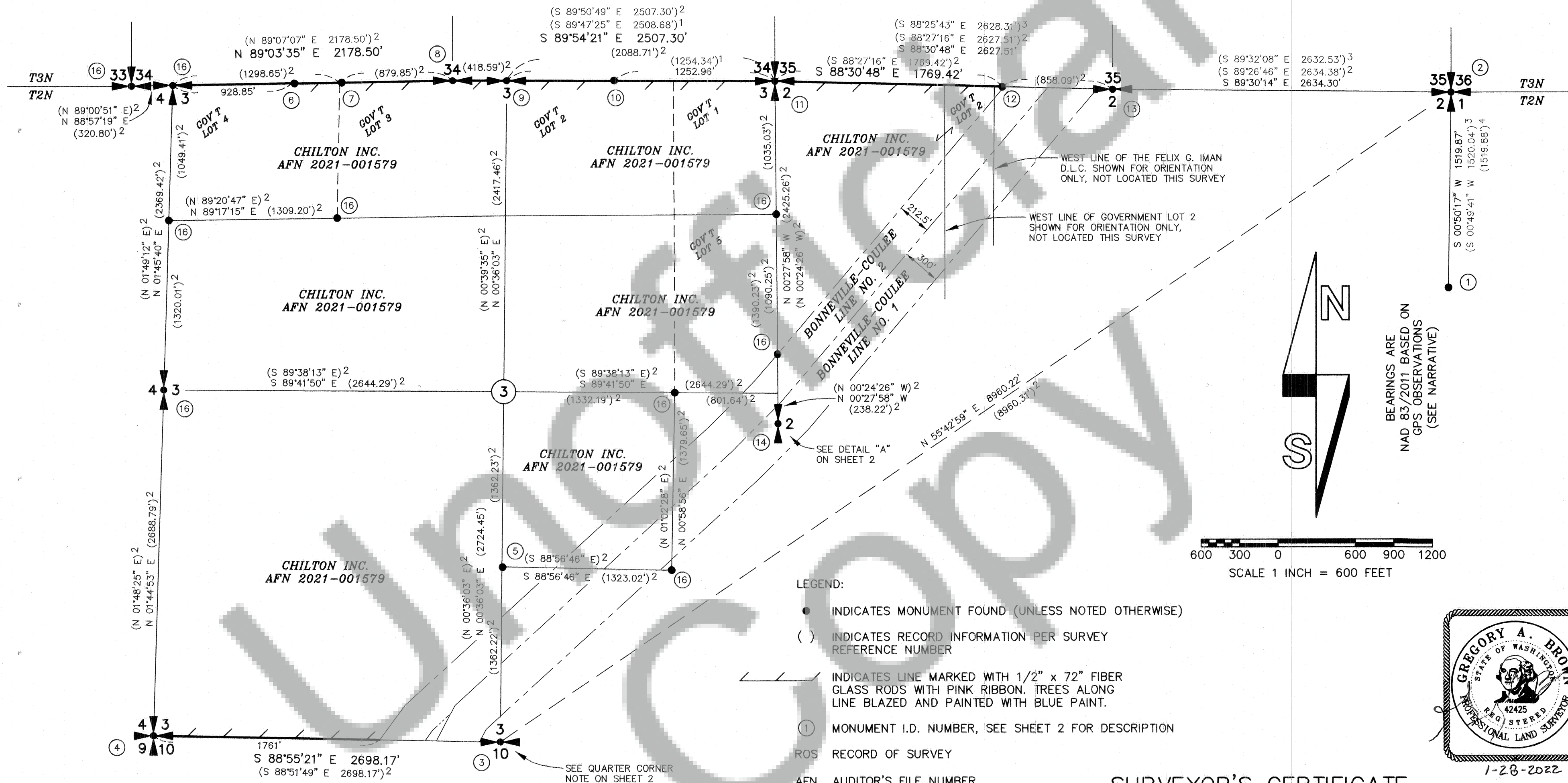
BARGAIN AND SALE DEED  
WEYERHAEUSER COMPANY  
TO  
CHILTON INC.  
AFN 2021-001579  
(05/05/2021)

## **SURVEY REFERENCE**

- 1) DNR MAP "FM 353"
- 2) ROS 2-257
- 3) ROS 3-178
- 4) SEVER'S SHORT PLAT T-101

# **RECORD OF SURVEY**

IN THE SW 1/4 AND SE 1/4 OF THE SW 1/4,  
GOV'T LOTS 3 AND 4 IN THE NW 1/4,  
AND GOV'T LOTS 1 AND 2 IN THE NE 1/4  
OF SECTION 3, AND GOV'T LOT 2  
AND THE NW 1/4 IN THE NW 1/4  
OF SECTION 2, T2N, R7E, W.M.  
SKAMANIA COUNTY, WA.



## **SURVEYOR'S CERTIFICATE**

THIS MAP CORRECTLY REPRESENTS A SURVEY MADE BY ME OR UNDER MY DIRECTION IN CONFORMANCE WITH THE REQUIREMENTS OF THE SURVEY RECORDING ACT AT THE REQUEST OF CHILTON INC. IN SEPTEMBER, 2021.

Gregory A. Brown 1/28/2022  
GREGORY A. BROWN, PROFESSIONAL LAND SURVEYOR, LS# 42425

## **AUDITOR'S CERTIFICATE**

FILED FOR RECORD THIS 31st DAY OF January 2022 AT 12:41 P.M. IN BOOK — OF SURVEYS AT PAGE —  
AT THE REQUEST OF BROWN SURVEYING, PLLC.

2022-000 2022  
AUDITOR'S FILE NUMBER

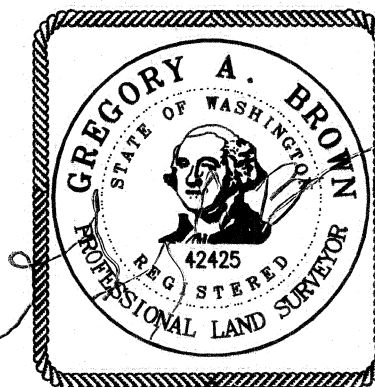
Richard Schellauer  
DEPUTY COUNTY AUDITOR

BROWN SURVEYING, PLLC MAKES NO WARRANTIES AS TO MATTERS OF UNWRITTEN TITLE SUCH AS ADVERSE POSSESSION, ACQUIESCENCE, ESTOPPLE, ETC.

A FIELD TRAVERSE WAS PERFORMED USING A NIKON NIVO 3.0C THREE SECOND TOTAL STATION WITH TDS DATA COLLECTION SYSTEM. THE FIELD TRAVERSE MET THE MINIMUM STANDARDS FOR SURVEYS AS DESIGNATED IN WAC 332-130-090. ALL CORNERS NOTED AS FOUND WERE VISITED ON 9/3 THRU 9/23/2021.

SCALE: 1"=600'  
JOB NO. 21-093  
DATE: 1-28-2022  
CALC BY: GAB  
DRAWN BY: GAB  
CHECKED BY: GAB  
SHEET 1 OF 2

**BROWN**  
SURVEYING PLLC  
PO BOX 414  
AMBOY, WA 98601  
360-600-0846  
ebrownsurveying@gmail.com

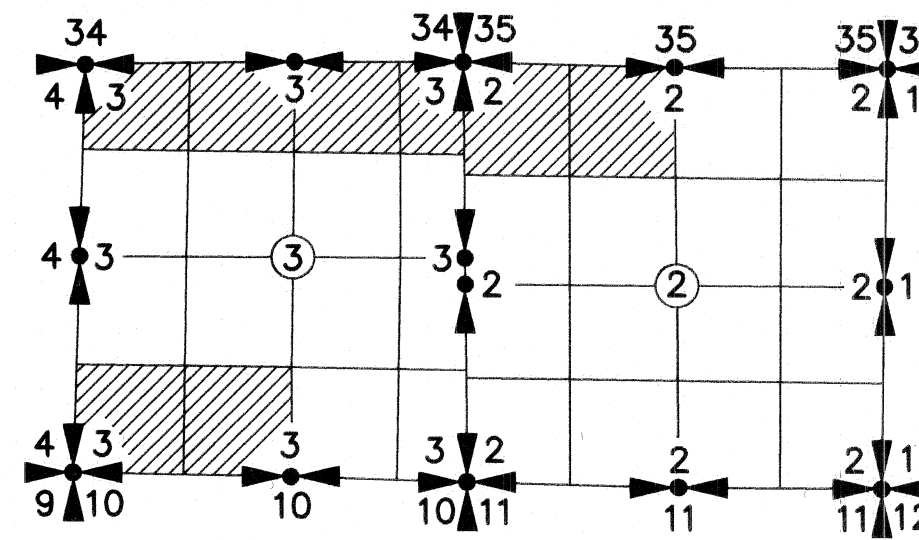




# RECORD OF SURVEY

IN THE SW 1/4 AND SE 1/4 OF THE SW 1/4,  
GOV'T LOTS 3 AND 4 IN THE NW 1/4,  
AND GOV'T LOTS 1 AND 2 IN THE NE 1/4  
OF SECTION 3, AND GOV'T LOT 2  
AND THE NW 1/4 IN THE NW 1/4  
OF SECTION 2, T2N, R7E, W.M.  
SKAMANIA COUNTY, WA.

- ① FOUND AND HELD SKAMANIA COUNTY 3" BRASS CAP SHOWN IN ROS 3-178 AT THE NORTHEAST CORNER OF THE BAUGHMAN D.L.C.
- ② FOUND AND HELD 1-1/4" IRON PIPE WITH CRIMPED TOP AS SHOWN IN ROS 3-178 AT THE NORTHEAST CORNER OF SECTION 2
- ③ FOUND AND HELD 1-1/4" IRON PIPE WITH 2-3/4" BRASS CAP AS SHOWN IN ROS 2-257 (SEE LCR 2/7-40)  
EXISTING REFERENCES:  
27" FIR WITH HEALED BLAZE, S11°E, 18.03' TO NAIL IN FACE  
33" FIR WITH HEALED BLAZE, S41°W, 17.58' TO NAIL IN FACE  
NEW REFERENCES:  
30" FIR, N44°E, 9.75'  
SET FIBERGLASS POST WEST, 1.0'
- ④ FOUND BLM 2-1/2" BRASS CAP AS SHOWN IN ROS 2-257, N71°26'11"E, 5.01' FROM CALCULATED POSITION, HELD CALC (SEE LCR 2/7-39)
- ⑤ FOUND 2-1/2" BRASS CAP AS SHOWN IN ROS 2-257, S68°05'13"E, 5.70' FROM CALCULATED POSITION, HELD CALC (SEE LCR 2/7-37)
- ⑥ FOUND DNR CONCRETE MONUMENT WITH 3" BRASS CAP AS SHOWN IN FM 353, N89°07'40"E, 17.47' FROM CALCULATED POSITION, HELD CALC
- ⑦ FOUND 2-1/2" BRASS CAP AS SHOWN IN ROS 2-257, N86°13'55"E, 16.74' FROM CALCULATED POSITION, HELD CALC (SEE LCR 2/7-27)
- ⑧ FOUND DNR CONCRETE MONUMENT WITH 3" BRASS CAP AS SHOWN IN FM 353, N82°14'27"E, 9.77' FROM CALCULATED POSITION, HELD CALC (SEE LCR 3/7-32)
- ⑨ FOUND 2-1/2" BRASS CAP AS SHOWN IN ROS 2-257, N81°51'50"E, 10.56' FROM CALCULATED POSITION, HELD CALC (SEE LCR 2/7-28)
- ⑩ FOUND DNR CONCRETE MONUMENT WITH 3" BRASS CAP AS SHOWN IN FM 353, N29°04'31"E, 4.56' FROM CALCULATED POSITION, HELD CALC (SEE LCR 3/7-32)
- ⑪ FOUND DNR CONCRETE MONUMENT WITH 3" BRASS CAP AS SHOWN IN FM 353, N49°30'43"E, 2.50' FROM CALCULATED POSITION, HELD CALC (SEE LCR 2/7-12 AND LCR 2/7-29)
- ⑫ FOUND 5/8" REBAR WITH YELLOW PLASTIC CAP STAMPED "WA 15673 PLS OR 1709 PLS" AS SHOWN IN ROS 2-257, N56°51'27"E, 1.64' FROM CALCULATED POSITION, HELD CALC
- ⑬ FOUND SKAMANIA COUNTY 3" BRASS CAP AS SHOWN IN ROS 2-257, S33°26'46"E, 2.31' FROM CALCULATED POSITION, HELD CALC (SEE LCR 2/7-30)
- ⑭ FOUND BENT SKAMANIA COUNTY 3" BRASS CAP IN ROCK MOUND AS SHOWN IN ROS 2-257, TIED SPIN HOLE, S81°38'03"E, 4.08' FROM CALCULATED POSITION, HELD CALC (SEE LCR 2/7-36)
- ⑮ CALCULATED POSITION OF 2-1/2" BRASS CAP AS SHOWN IN ROS 2-257, SFNF
- ⑯ CALCULATED POSITION OF MONUMENTS AS SHOWN IN ROS 2-257, NOT SEARCHED FOR DURING THIS SURVEY



SECTION DIAGRAM  
NOT TO SCALE

## REFERENCE TREE NOTE

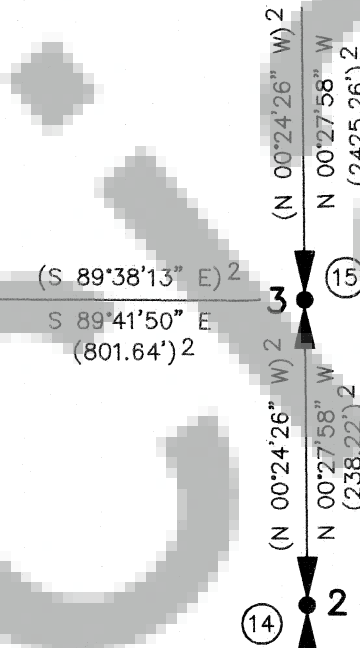
NEW REFERENCE TREES WERE MEASURED TO A 6" NAIL SET IN SIDE CENTER OF TREE. ALSO PLACED A BEARING TREE SIGN AND 4 NOTCHES FACING TOWARD THE CORNER. BEARINGS NOTED WERE TAKEN WITH A HAND HELD COMPASS WITH A DECLINATION SET TO 16° EAST.

## SOUTH QUARTER SECTION 3 NOTE

I CHOSE TO HOLD THE MONUMENT AS SET IN ROS 2-257 WHICH REPLACED THE 2" X 6' BOILER TUBE FOR THE SOUTH QUARTER CORNER OF SECTION 3. THIS MONUMENT WAS BASED ON ACTUAL GLO EVIDENCE AS NOTED IN THE 1933 SURVEY NOTES FOR THE WAUNA LAKE CLUB, BY W.E. BLAIR. MR. BLAIR FOUND BOTH ORIGINAL BEARING TREES (ONE WITH SCRIBING) WHEN HE REESTABLISHED THE CORNER IN 1933 WITH THE BOILER TUBE. IN 1973 IN ROS 1-18, OLSON ENGINEERING PURPORTED FINDING ONE ORIGINAL BEARING TREE STUMP WITH OUT SCRIBING. THEIR POSITION FOR THE QUARTER CORNER WAS BASED ON THE RECORD ALIGNMENT AND DISTANCE TO THE WITNESS POINT TO THE EAST, THE STUMP THEY FOUND JUST SO HAPPENED TO FIT THE POSITION OF THEIR CALCULATED CORNER. IT IS UNCLEAR ON THEIR SURVEY WHY THEY DIDN'T HOLD THE BOILER TUBE WHICH WAS BASED ON ORIGINAL EVIDENCE AND IN EXISTENCE AT THE TIME OF THEIR SURVEY.

## ACTIVE LANDSLIDE NOTE

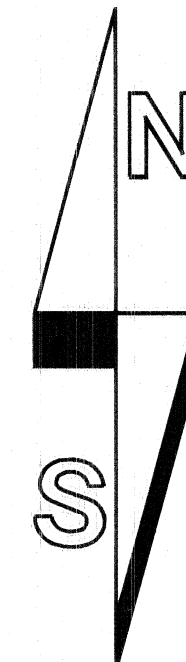
SOME OF THE AREA SURVEYED WITHIN SECTIONS 2 AND 3 SHOWN ON SHEET 1 IS WITHIN AN ACTIVE LANDSLIDE. IN 1952, THE BUREAU OF LAND MANAGEMENT PERFORMED A DEPENDENT RESURVEY OF SECTION 4, UNDER SPECIAL INSTRUCTIONS DATED APRIL 11, 1952, GROUP NO. 214 WHICH WAS EXECUTED BY THOMAS A. TILLMAN. HE NOTED IN THE GENERAL DESCRIPTION ON PAGE 17 OF HIS NOTES "THAT PORTION OF TOWNSHIP 2 NORTH, RANGE 7 EAST INCLUDED IN THE FOREGOING SURVEY LIES IN A REGION OF FORMER GREAT VOLCANIC ACTIVITY ON THE NORTH SIDE OF THE COLUMBIA RIVER GORGE". HE ALSO MAKES NOTE OF GREENLEAF CREEK WHICH HE SAYS IS THE MOST IMPORTANT STREAM IN THE RESURVEYED AREA, "THE REMAINING DRAINAGE IS INTERMITTENT AND DIFFICULT TO TRACE DUE TO THE MANY NATURAL DYKES AND FAULTS WHICH HAVE CAUSED THE FORMATION OF NUMEROUS SMALL LAKES, LARGE SPRINGS, AND DISAPPEARING STREAMS". A 2016 PUBLICATION BY THE UNITED STATES GEOLOGICAL SURVEY (USGS) TITLED "LANDSLIDES IN THE WESTERN COLUMBIA GORGE, SKAMANIA COUNTY, WASHINGTON" ALSO COVERS THIS AREA QUITE EXTENSIVELY. THEY CALL THE AREA THE "CASCADE LANDSLIDE COMPLEX" AND ALSO SAY THAT THIS AREA WAS "FIRST NOTED NOTED BY THE MEMBERS OF THE LEWIS AND CLARK EXPEDITION, WHO OBSERVED IN 1805 THAT THE RIVER WAS OBSTRUCTED BY SMALL ISLANDS AND LARGE ROCKS". THE LANDSLIDE SEEMS TO BE MOST ACTIVE IN THE NORTHWEST PORTION OF OUR SURVEY. MONUMENT NUMBER 6 HAS MOVED APPROXIMATELY 17.5' EASTERLY SINCE 1979 WHEN IT WAS SET IN DNR MAP "FM 353". MONUMENTS 12 AND 13 HAVE MOVED APPROXIMATELY 2' EASTERLY SINCE THEY WERE NOTED IN ROS 2-257. I CHOSE TO HOLD THE CALCULATED POSITIONS OF THE MONUMENTS AS SHOWN IN THOSE 2 SURVEYS FOR THE PURPOSE OF MARKING THE LINES IN THIS SURVEY. THE CALCULATED POSITIONS OF THE CORNERS SHOWN IN THOSE 2 SURVEYS ARE THE BEST EVIDENCE OF THE ORIGINAL POSITIONS SET BY THE GENERAL LAND OFFICE.



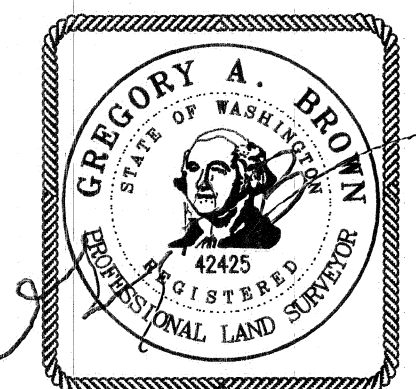
DETAIL "A"  
NOT TO SCALE

## LEGEND:

- INDICATES MONUMENT FOUND (UNLESS NOTED OTHERWISE)
- ( ) INDICATES RECORD INFORMATION PER SURVEY REFERENCE NUMBER
- INDICATES LINE MARKED WITH 1/2" x 72" FIBER GLASS RODS WITH PINK RIBBON. TREES ALONG LINE BLAZED AND PAINTED WITH BLUE PAINT.
- ① MONUMENT I.D. NUMBER, SEE SHEET 2 FOR DESCRIPTION
- GLO GENERAL LAND OFFICE
- ROS RECORD OF SURVEY
- AFN AUDITOR'S FILE NUMBER
- SFNF SEARCHED FOR NOT FOUND



BEARINGS ARE  
NAD 83/2011 BASED ON  
GPS OBSERVATIONS  
(SEE NARRATIVE)



1-28-2022

SCALE: NA  
JOB NO. 21-093  
DATE: 1-28-2022  
CALC BY: GAB  
DRAWN BY: GAB  
CHECKED BY: GAB  
SHEET 2 OF 2

**BROWN**  
SURVEYING PLLC

PO BOX 414  
AMBOY, WA 98601  
360-600-0846  
ebrownsurveying@gmail.com