

SURVEY NARRATIVE

MONUMENTS FOUND AND HELD AS SHOWN. NO ORIGINAL EVIDENCE FOR THE NORTHWEST CORNER OF SECTION 4 (TOWNSHIP 3N) OR THE SOUTHWEST CORNER OF SECTION 33 (TOWNSHIP 4N) WAS FOUND.

IT APPEARS A GAS LINE RUNNING EAST AND WEST ALONG THE NORTH LINE OF SECTION 4 HAS DESTROYED ORIGINAL EVIDENCE.

A 3" IRON PIPE WITH BT'S WAS FOUND NEAR THE CALCULATED LOCATION. IT WAS SET BY FORESTERS BY THE PROPORTIONMENT OF DISTANCES TO OTHER UNRECORDED MONUMENTS AND NOT ACCEPTED THIS SURVEY.

THE NORTHWEST CORNER OF SECTION 4 WAS CALCULATED BY SINGLE PROPORTION BETWEEN THE NORTHEAST CORNER OF SECTION 4 AND NORTHWEST CORNER OF SECTION 5.

THE NORTH 1/4 CORNER OF SECTION 4 WAS CALCULATED AS SHOWN. AS PER THE 1913 GENERAL LAND OFFICE RETRACEMENT OF THIS LINE, THE POSITION IS COMMON TO BOTH SECTION 4 AND 33.

TIES TO A CREEK RUNNING APPROXIMATELY NORTH-SOUTH, WEST OF THE CALCULATED NORTHWEST CORNER OF SECTION 4 (THIS SURVEY) FIT THE GENERAL LAND OFFICE FIELD NOTE CALL OF 2.72 CHAINS WITHIN 11 FEET, PLUS OR MINUS.

REFERENCES

- 1) 1999 DAVIS CONSULTING GROUP SURVEY FOR PACIFICORP, BOOK 3, PAGE 299
2) 1990 CHARLES SEWARD SHORT PLAT (BY D2AB), BOOK 3, PAGE 180
3) ORIGINAL 1876 & 1913 GENERAL LAND OFFICE PLATS AND FIELD NOTES

TRAVERSE & ACCURACY STATEMENT






SURVEY CONTROL WAS ESTABLISHED USING A TRIMBLE R8 GNSS RECEIVER WITH RTK CORRECTIONS FROM THE WASHINGTON STATE REFERENCE NETWORK, UTILIZING REFERENCE BASE STATION PRS750050405666.

A TRAVERSE BETWEEN GPS CONTROL POINTS WAS PERFORMED WITH A FIVE-SECOND TOTAL STATION AND RELATED MEASURING EQUIPMENT, OF WHICH MEET STATE STANDARDS (WAC 332-130-090,100) AT THE TIME OF THIS SURVEY. RAW ANGULAR AND DISTANCE CLOSURES WERE WELL WITHIN THE 1:5000 STANDARD.

LEGAL DESCRIPTION

TAX PARCEL 03100000050000
THE SE1/4 OF THE NW1/4, AND THE NE1/4 OF THE SW1/4,
SECTION 4, TOWNSHIP 3 NORTH, RANGE 10 EAST, W.M.
A PORTION OF QUIT CLAIM DEED RECORDED IN BOOK 162, PAGE 44,
RECORDS OF SKAMANIA COUNTY

LEGEND

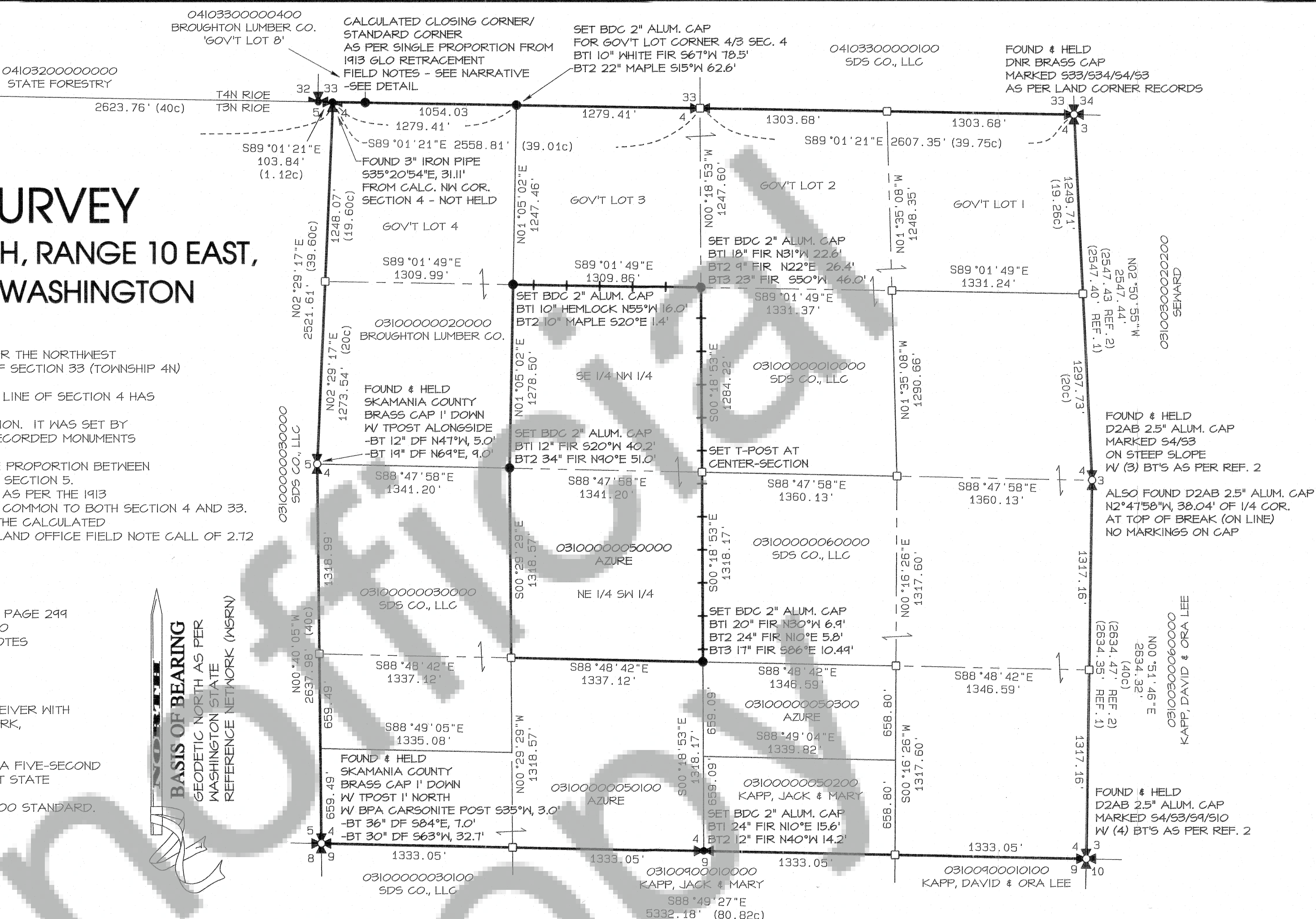
-  SECTION CORNER FOUND AS NOTED
-  FOUND 1/4 CORNER AS NOTED
- ☐ CALCULATED CORNER;
NOT SET OR FOUND.
-  CALCULATED 1/4 CORNER
- () PLAT OR DEED CALL
-  SET BDC 2" ALUM. CAP W/ T-POST FOR
CLOSING CORNER (CC) OR STANDARD CORNER (SC)
- SET BDC 2" ALUM. CAP W/ T-POST
-  MARK LINE W/ FIBERGLASS POST @ 150' INTERVALS

'ALUM.' ALUMINUM
'DF' DOUGLAS FIR

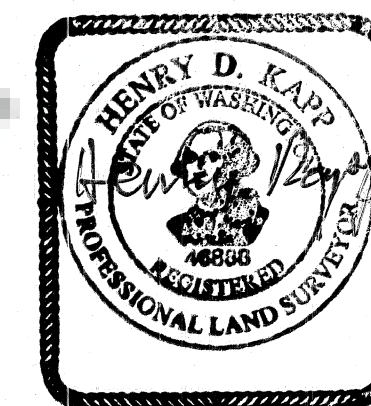
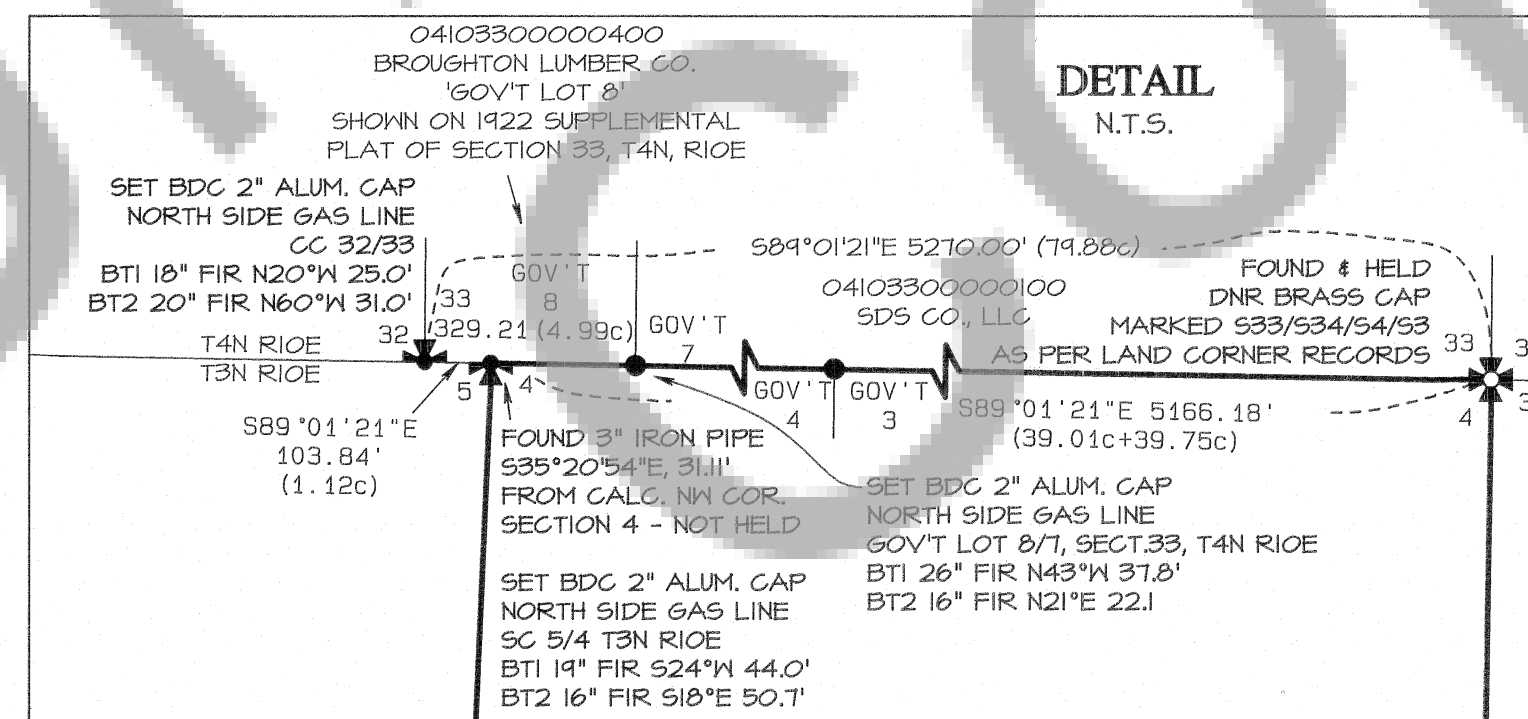
ORIGINAL SCALE 1"=600'

600 0 600 1200 1800

GRAPHIC SCALE



DETAIL
N.T.S.



AUDITOR'S CERTIFICATE

I hereby certify that within the Instrument of writing filed
by Bell Design of — at 10:03AM
on October 20, 2021 was recorded under
Auditor's File Number 2021-003524

Skamania County Auditor - Deputy

SURVEYOR'S CERTIFICATE

This map correctly represents a survey made by me or
under my direction in conformance with the current
requirements of the Survey Recording Act at the
request of Shirley Azure and SDS Co., LLC

Henry D. Karp 10/18/21

Henry D. Karp PLS 46865 Date



INDEX CHART

The index chart is a grid with a diagonal line running from the top-left to the bottom-right. A circle containing the number 5 is located in the middle of the grid.

DATE	DESCRIPTION	BY
7/21	DRAFT	HD
7/21	CHECK	AP

RECORD OF SURVEY
FOR SHIRLEY AZURE & SDS COMPANY, LLC
SKAMANIA COUNTY, WASHINGTON

SHEET: 1 OF 1
PROJECT: 21B178
DATE: Oct 2021

Bill Design Co. makes no warranty as to matters of unwritten title such as adverse possession, prescriptive rights, easements, estoppel, acquiescence, etc. or to environmental concerns such as hazardous waste, pollution, wet land delineation, riparian changes, flood zones, etc.

O:\2021\BI78\2\BI78.pro