

NARRATIVE

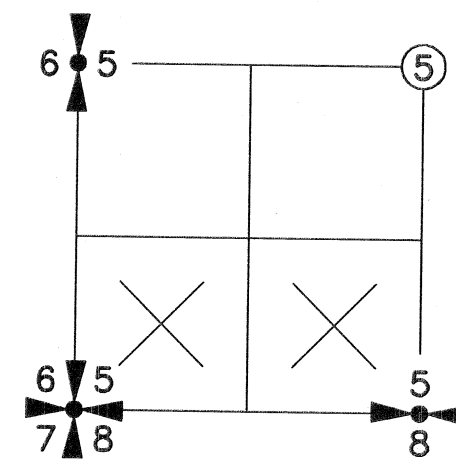
THE PURPOSE OF THIS SURVEY WAS TO POST THAT PORTION OF THE SOUTH LINE OF SECTION 5 SHOWN AS MARKED FOR THE "POPE RESOURCES TRACT" CITED AT THE REQUEST OF RAYONIER FOREST RESOURCES. CONTROLLING CORNERS SHOWN WERE TIED BY CONVENTIONAL TRAVERSE METHODS ORIGINATING FROM NEARBY "RTK GPS POINTS". THE GPS POINTS WERE COLLECTED ON "WASHINGTON STATE PLANE COORDINATE SYSTEM, SOUTH ZONE" (NAD 83/2011) WHICH WAS THE BASIS OF BEARING FOR THIS SURVEY. A TRAVERSE WAS THEN RUN ALONG THE LINE SHOWN AS MARKED BEGINNING AND ENDING ON SAID GPS POINTS. OTHER CORNERS SHOWN WERE TIED RADIALLY FROM THE ABOVE DESCRIBED TRAVERSE, NO NEW MONUMENTS WERE ESTABLISHED DURING THIS SURVEY. DISTANCES SHOWN ARE GRID DISTANCES, TO OBTAIN GROUND DISTANCES DIVIDE THE DISTANCES SHOWN BY THE COMBINED SCALE FACTOR OF 0.99980931.

DEED REFERENCE
SPECIAL WARRANTY DEED
PLUM CREEK TIMBERLANDS, L.P.
TO
POPE RESOURCES
BOOK 208, PAGE 110
(03-30-2001)

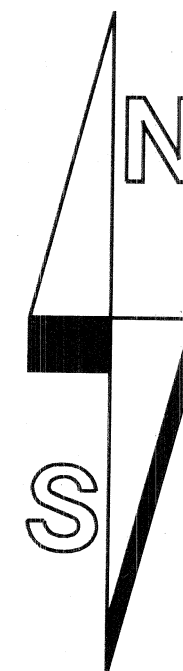
SURVEY REFERENCE

- 1) ROS 2-163
- 2) BOOK B OF PLATS, PAGE 160
"4 PEAKS SUBDIVISION"

RECORD OF SURVEY IN THE SW 1/4 AND SE 1/4 OF THE SW 1/4 OF SECTION 5, T7N, R6E, W.M. SKAMANIA COUNTY, WA.

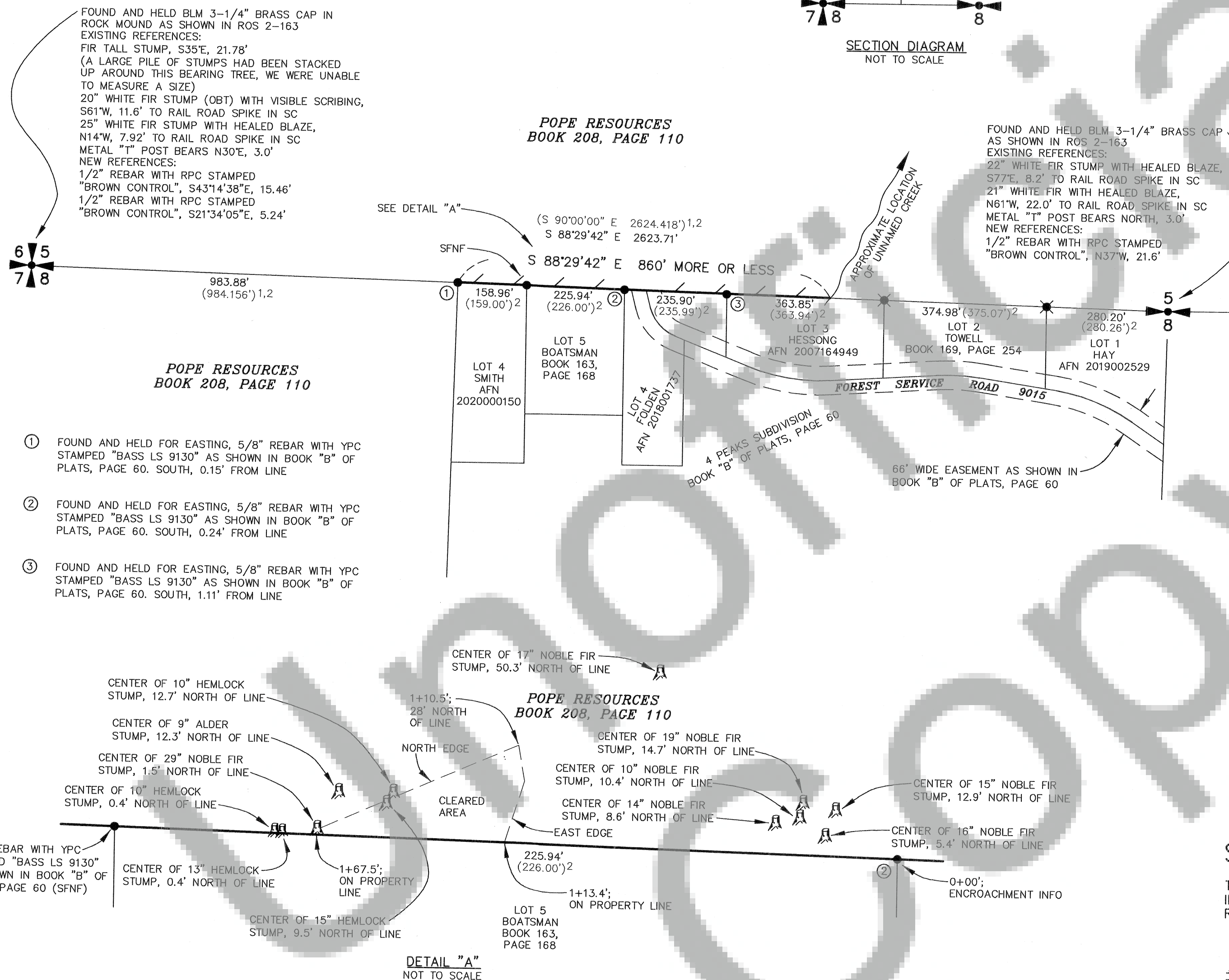


SECTION DIAGRAM
NOT TO SCALE



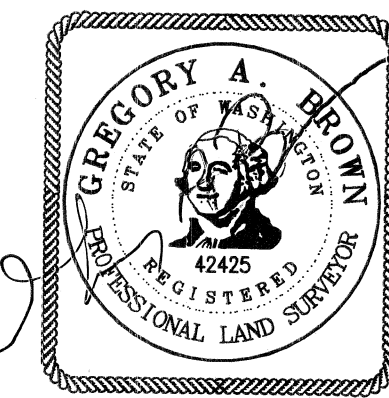
BEARINGS ARE
NAD 83/2011 BASED
ON GPS OBSERVATIONS
(SEE NARRATIVE)

SCALE 1 INCH = 200 FEET



LEGEND:

- INDICATES MONUMENT FOUND (UNLESS NOTED OTHERWISE)
- ✱ INDICATES CALCULATED POSITION OF 5/8" REBAR WITH YPC STAMPED "BASS LS 9130" AS SHOWN IN BOOK "B" OF PLATS, PAGE 60
- () INDICATES RECORD INFORMATION PER SURVEY REFERENCE NUMBER
- INDICATES LINE MARKED WITH 1/2" x 72" FIBER GLASS RODS WITH RED RIBBON. TREES ALONG RAYONIER SIDE OF LINE WERE BLAZED
- ROS RECORD OF SURVEY
- AFN AUDITOR'S FILE NUMBER
- BLM BUREAU OF LAND MANAGEMENT
- OBT ORIGINAL BEARING TREE
- YPC YELLOW PLASTIC CAP
- RPC RED PLASTIC CAP
- SC SIDE CENTER
- GPS GLOBAL POSITIONING SYSTEM
- RTK REAL TIME KINEMATIC
- ① MONUMENT I.D. NUMBER, SEE THIS PAGE FOR DESCRIPTION
- SFNF SEARCHED FOR NOT FOUND



SURVEYOR'S CERTIFICATE

THIS MAP CORRECTLY REPRESENTS A SURVEY MADE BY ME OR UNDER MY DIRECTION IN CONFORMANCE WITH THE REQUIREMENTS OF THE SURVEY RECORDING ACT AT THE REQUEST OF RAYONIER FOREST RESOURCES L.P. IN JULY, 2021.

Gregory A. Brown 8/17/21
GREGORY A. BROWN, PROFESSIONAL LAND SURVEYOR, LS# 42425

SCALE: 1"=200'
JOB NO. 21-113
DATE: 8/17/2021
CALC BY: GAB
DRAWN BY: GAB
CHECKED BY: EVB
SHEET 1 OF 1

BROWN
SURVEYING PLLC

PO BOX 414
AMBOY, WA 98601
360-600-0846
ebrownsurveying@gmail.com

AUDITOR'S CERTIFICATE

FILED FOR RECORD THIS 25th DAY OF August 2021 AT
1:40 P.M. IN BOOK 2021-002928
AT THE REQUEST OF BROWN SURVEYING, PLLC. AFN # 2021-002928
Kathryn
DEPUTY COUNTY AUDITOR

BROWN SURVEYING, PLLC MAKES NO WARRANTIES AS TO MATTERS OF UNWRITTEN TITLE SUCH AS ADVERSE POSSESSION, ACQUIESCENCE, ESTOPPLE, ETC.

A FIELD TRAVERSE WAS PERFORMED USING A NIKON NIVO 3.0C THREE SECOND TOTAL STATION WITH TDS DATA COLLECTION SYSTEM. THE FIELD TRAVERSE MET THE MINIMUM STANDARDS FOR SURVEYS AS DESIGNATED IN WAC 332-130-090. ALL CORNERS NOTED AS FOUND WERE VISITED ON 7/19 AND 7/20/2021.