

## SURVEY NARRATIVE:

THE PURPOSE OF THIS SURVEY IS TO POST THE BOUNDARY OF NATIONAL FOREST SYSTEM LANDS FOR PROJECT CRG2021\_01. ALUMINUM POSTS WITH PROPERTY BOUNDARY SIGNS #54-2 WERE SET AT APPROXIMATELY 150-FOOT INTERVALS ALONG THE BOUNDARY. TREES WITHIN 3 FT OF LINE WERE BLAZED, ONE BLAZE ON PRIVATE LAND AND TWO ON FOREST SERVICE LAND. TREES ON LINE WERE TRIPLE BLAZED.

MONUMENTS FROM SR1 AND SR3 WERE FOUND AND HELD FOR THE BOUNDARY SOLUTION. SR1 MONUMENTS AND LINES WERE FOUND CLEARLY POSTED WITH YELLOW CARSONITE POSTS READING "US FISH AND WILDLIFE SERVICE." SR3 MONUMENTS WERE FOUND NEXT TO STEEL T-POSTS AND LINES WERE CONSPICUOUSLY MARKED WITH T AND ANGLE IRON POSTS.

## METHOD OF SURVEY:

CONTROL POINTS WERE RECOVERED FROM A PREVIOUS PROJECT, CONTRACT AWARD #1205G119F0020 (SEE SR2). A TRAVERSE WAS CONDUCTED BY E. LAMB, PLS ASSISTED BY J. BESANCON, PLS AND D. LONDON BEGINNING AT EXISTING CONTROL NETWORK POINTS NEAR THE EAST 1/4 CORNER OF SECTION 27, AND PROCEEDING WEST, SOUTH, AND SOUTHEAST AROUND THE BOUNDARY. SAID TRAVERSE CLOSED ON CONTROL NETWORK POINTS NEAR THE SOUTHERLY END OF THE POSTING LIMITS. FOUND MONUMENTS WERE TIED RADIALLY THEREFROM. MEASUREMENTS WERE MADE USING A 3-SECOND TRIMBLE S7 TOTAL STATION WITH EDM (1MM+2PPM). THE TRAVERSE WAS ADJUSTED IN TRIMBLE BUSINESS CENTER BY COMPASS RULE. ALL WORK EXCEEDED THE STANDARDS SET FORTH IN WAC 332-130-90. SAID MONUMENTS WERE REDUNDANTLY OBSERVED WITH RTK GPS AND CHECKED SATISFACTORILY.

THE NORTHEAST CORNER OF SECTION 27 WAS COMPUTED FROM THE AVERAGE OF TWO CONSECUTIVE 3-MINUTE RTK GPS SESSIONS WITH INDEPENDENT INITIALIZATIONS. BASE CORRECTIONS WERE TRANSMITTED FROM GPS BASE CONTROL POINT #65 RECOVERED FROM SAID PREVIOUS PROJECT (SR2). RTK OBSERVATIONS WERE COLLECTED USING A TRIMBLE R8S BASE AND TRIMBLE R10 ROVER (BOTH 8MM+1PPM RMS). A REDUNDANT TRAVERSE WAS CONDUCTED NORTH FROM SAID EXISTING CONTROL NETWORK POINTS NEAR THE EAST 1/4 CORNER TO THE NORTHEAST CORNER OF SECTION 27 WHICH CHECKED SATISFACTORILY.

BEARING TREES WERE MEASURED WITH STEEL TAPE AND HAND COMPASS (DECLINATION 16°E), MARKED WITH SIGNS #54-3 "BEARING TREE" AND #54-9 "LAND SURVEY MONUMENT," AND PAINTED RED WITH 6" BAND AROUND THE CIRCUMFERENCE.

GROUND DISTANCES ARE SHOWN HEREON. FOR WA SOUTH STATE PLANE GRID DISTANCES, APPLY A COMBINED FACTOR OF 0.9999955248.

## SURVEY REFERENCES:

SR1 - UNRECORDED SURVEY BY US FISH AND WILDLIFE SERVICE, M. RICHEY 1987  
SR2 - AFN 2020-002384, D. RENTON 2020  
SR3 - BOOK 3 OF SHORT PLATS, PAGE 84, R. GLAESER 1985

## DEED REFERENCES:

D1 - BOOK 256, PAGE 384 JOHNSON TO UNITED STATES OF AMERICA 2004  
D2 - BOOK 102, PAGE 38 THE TRUST FOR PUBLIC LAND TO UNITED STATES OF AMERICA 1986

REVIEWED BY

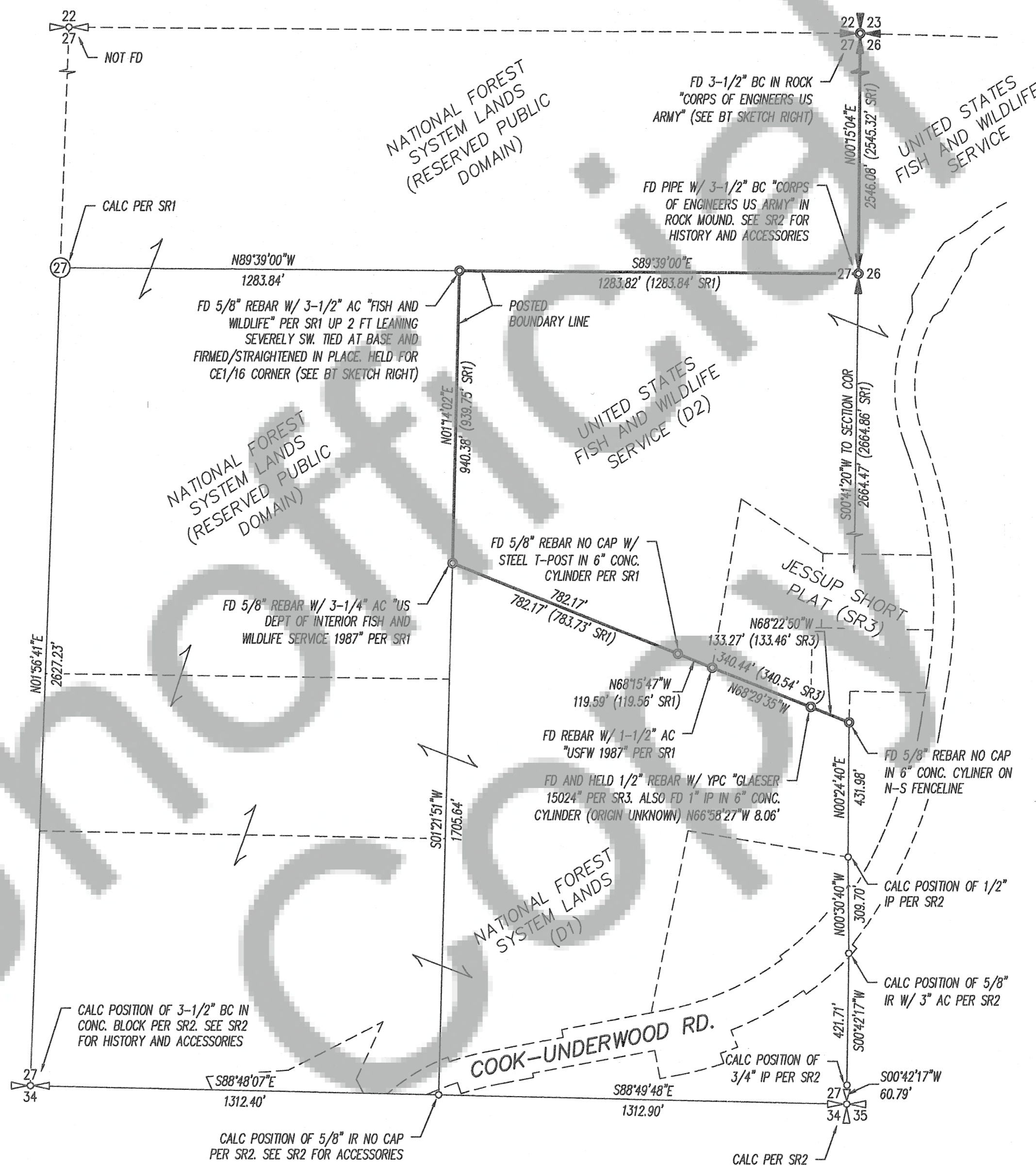
*E. Lamb* 02-22-2021  
SIGNATURE DATE

I CERTIFY THAT THIS SURVEY WAS PERFORMED AT THE REQUEST OF THE COLUMBIA RIVER GORGE NATIONAL SCENIC AREA FOREST SUPERVISOR

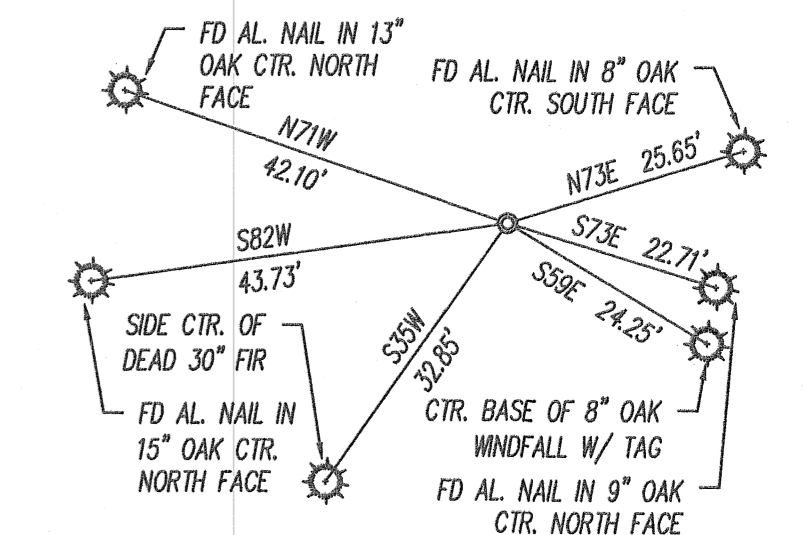
*Christy Chepe* 02-22-2021  
SIGNATURE DATE

# RECORD OF SURVEY

LOCATED IN THE COLUMBIA RIVER GORGE NATIONAL SCENIC AREA  
IN THE NE1/4 NE1/4, SE1/4 NE1/4, SW1/4 NE1/4, NW1/4 SE1/4,  
NE1/4 SE1/4, AND SE1/4 SE1/4 OF SECTION 27 T3N R9E W.M.  
SKAMANIA COUNTY, WASHINGTON



BEARING TREES AT CE1/16 CORNER SECTION 27  
SCALE 1"=30'



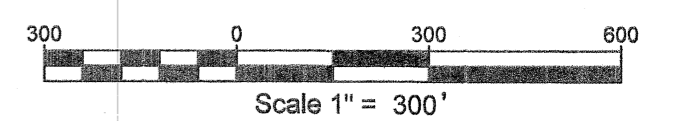
BEARING TREES AT SECTION CORNER 27  
SCALE 1"=20'

## LEGEND:

- FOUND AND HELD MONUMENT AS NOTED NOVEMBER-DECEMBER 2020
- CALCULATED POINT
- 27 23  
27 26 GLO CORNER FOUND
- 27 26  
34 35 GLO CORNER CALCULATED
- AC ALUMINUM CAP
- AL. ALUMINUM
- AFN AUDITOR'S FILE NUMBER
- BC BRASS CAP
- CALC CALCULATED
- CONC. CONCRETE
- CTR. CENTER
- FD FOUND
- IR IRON ROD
- IP IRON PIPE
- SR SURVEY REFERENCE NUMBER
- YPC YELLOW PLASTIC CAP
- ( ) RECORD DATA

## BASIS OF BEARINGS:

N89°39'00"W BETWEEN FD PIPE W/ 3-1/2" BC AT EAST 1/4 CORNER OF SECTION 27 AND FD 5/8" REBAR W/ 3-1/2" AC AT CENTER EAST 1/16 CORNER SECTION 27. ALL BEARINGS ARE WA STATE PLANE SOUTH ZONE NAD 83 (2011) EPOCH 2010 W/ CONVERGENCE ANGLE OF -00°50'15"

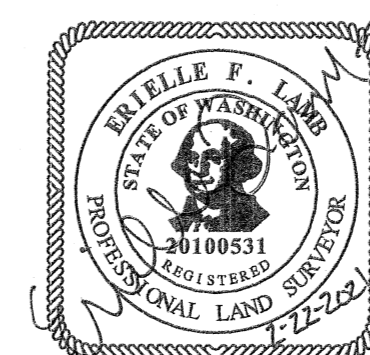


UNITED STATES DEPARTMENT OF AGRICULTURE  
FOREST SERVICE- REGION 6  
COLUMBIA LANDS ZONE  
987 McCLELLAN ROAD  
VANCOUVER, WA 98661

## SURVEYOR'S CERTIFICATE

THIS MAP CORRECTLY REPRESENTS A SURVEY MADE BY ME OR UNDER MY DIRECTION IN CONFORMANCE WITH THE REQUIREMENTS OF THE SURVEY RECORDING ACT AT THE REQUEST OF THE COLUMBIA RIVER GORGE NATIONAL SCENIC AREA IN DECEMBER 2020.

*Erielle F. Lamb* 2/22/2021  
ERIELLE F. LAMB, PLS #20100531 DATE



## AUDITOR'S CERTIFICATE

FILED FOR RECORD THIS 22 DAY OF February 2021 AT 1:41 P.M. IN BOOK 2 OF 2 AT PAGE 1 AT THE REQUEST OF ERIELLE F. LAMB, PLS.  
*Michael Dickman* AFN-2021-000595  
COUNTY AUDITOR - Deputy

DRAWN BY: JMB  
CALC BY: JMB  
CHECK BY: EFL

SHEET 1 OF 1