

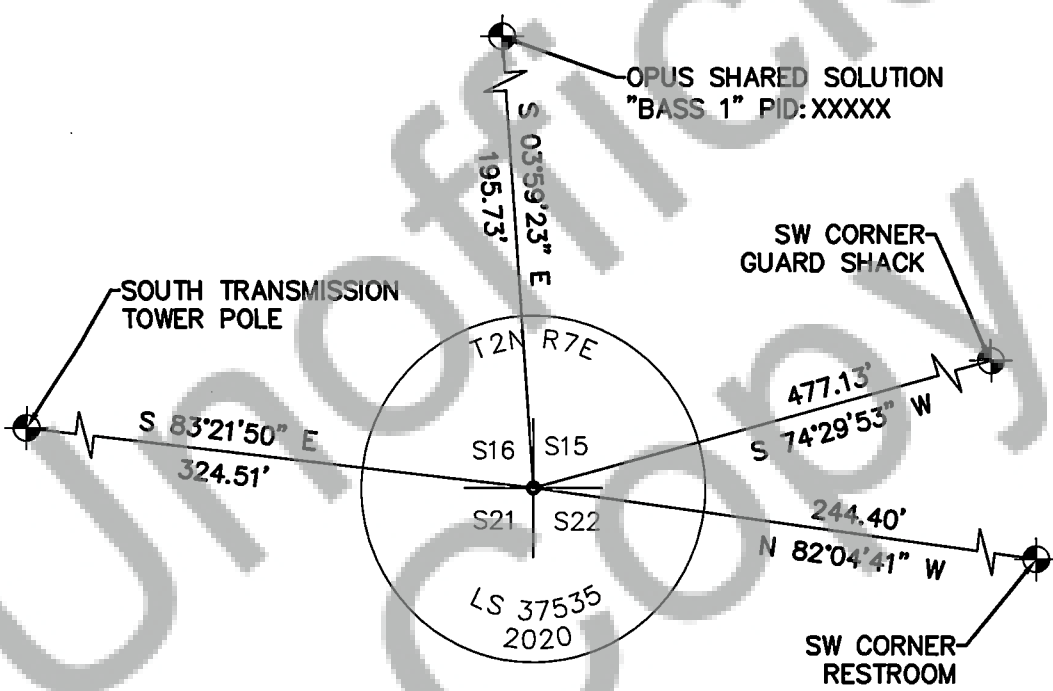
LAND CORNER RECORD ATTACHMENT

CORNER INFORMATION: DISCUSS THE HISTORY, EVIDENCE FOUND, AND PERPETUATION OF THE CORNER. SHOW THE REFERENCES; PROVIDE THE DATE OF THE FIELD WORK; IF APPLICABLE, MAKE REFERENCE TO A MAP OF RECORD AND/OR THE FIELD BOOK/PAGE NO. USE ADDITIONAL SHEETS AS NEEDED.

- 1) AUGUST 7, 1859 UNDER GENERAL LAND OFFICE CONTRACT NUMBER 47, LEWIS VAN VLEET AND JOHN WILLIAM NEWSOM RAN SOUTH ALONG THE EAST LINE OF SECTION 16, TOWNSHIP 2 NORTH, RANGE 7 EAST, WILLAMETTE MERIDIAN FOR 80 CHAINS FROM THE NORTHEAST CORNER OF SAID SECTION 16 TO THE SOUTHEAST CORNER OF SECTION 16. THEY SET A POST AT THE CORNER TO SECTIONS 15,16,21 AND 22. THE FOLLOWING BEARING TREES WERE SCRIBED: A FIR 10 INCH IN DIAMETER BEARS S 14° E, 24 LINKS DISTANCE, A FIR 20 INCH IN DIAMETER BEARS S 45° W, 40 LINKS DISTANCE, A FIR 15 INCH IN DIAMETER BEARS N 76° E, 30 LINKS DISTANCE AND A FIR 3 INCH IN DIAMETER BEARS N 20° W, 15 LINKS DISTANCE.
- 2) APRIL 28, 1971, BONNEVILLE POWER ADMINISTRATION, WASHINGTON DEPARTMENT OF NATURAL RESOURCES, RIGHT OF PLAT APPLICATION MAP NUMBER 34813 DEPICTS A BRASS CAP AT THE SOUTHEAST CORNER OF SAID SECTION 16 WITH NAD 27, WASHINGTON STATE PLANE COORDINATES, SOUTH ZONE, US-FEET.
- 3) OCTOBER 31, 1978, WILLIAM F. HAGEDORN, RECORDED A SURVEY IN SKAMANIA COUNTY UNDER BOOK 1 OF SURVEYS AT PAGES 168-170. HE DEPICTS U.S.C.E., NAD 27, WASHINGTON STATE PLANE COORDINATE SYSTEM, SOUTH ZONE, US-FEET, COORDINATE VALUE FOR THE SOUTH EAST CORNER OF SAID SECTION 16. THE SOUTHEAST CORNER OF SAID SECTION 16 HAS BEEN DESTROYED DUE TO THE CONSTRUCTION OF THE SECOND POWER HOUSE AT BONNEVILLE DAM WHICH TOOK PLACE FROM 1974 TO 1982.
- 4) FEBRUARY 22, 1979, DONALD J. BRANTON, RECORDED A LAND CORNER RECORD IN SKAMANIA COUNTY UNDER BOOK 2/7 OF LAND OF LAND CORNERS, AT PAGE 7. HE DEPICTS U.S.C.E., NAD 27, WASHINGTON STATE PLANE COORDINATE SYSTEM, SOUTH ZONE, US-FEET, COORDINATE VALUE FOR THE SOUTH EAST CORNER OF SAID SECTION 16 AND SET A HUB. SAID SECTION 16 HAS BEEN DESTROYED DUE TO THE CONSTRUCTION OF THE SECOND POWER HOUSE AT BONNEVILLE DAM WHICH TOOK PLACE FROM 1974 TO 1982.
- 5) MARCH 27, 1980, DONALD J. BRANTON, RECORDED A SURVEY IN SKAMANIA COUNTY UNDER BOOK 1 OF SURVEYS AT PAGES 244-227. HE DEPICTS U.S.C.E., NAD 27, OREGON STATE PLANE COORDINATE SYSTEM, NORTH ZONE, US-FEET, COORDINATE VALUE FOR THE SOUTH EAST CORNER OF SAID SECTION 16. THE SOUTHEAST CORNER OF SAID SECTION 16 HAS BEEN DESTROYED DUE TO THE CONSTRUCTION OF THE SECOND POWER HOUSE AT BONNEVILLE DAM WHICH TOOK PLACE FROM 1974 TO 1982.
- 6) MARCH 15, 1995, GEORGE J. FORD, RECORDED A SURVEY IN SKAMANIA COUNTY UNDER BOOK 3 OF SURVEYS AT PAGE 184. HE COMPUTES THE SOUTHEAST CORNER OF SAID SECTION 16 FROM THE HAGEDORN SURVEY DESCRIBED IN THE ABOVE PARAGRAPH NUMBER 3. THE SOUTHEAST CORNER OF SAID SECTION 16 HAS BEEN DESTROYED DUE TO THE CONSTRUCTION OF THE SECOND POWER HOUSE AT BONNEVILLE DAM WHICH TOOK PLACE FROM 1974 TO 1982.
- 7) AUGUST 23, 1996, JOHN A. DUNCAN, RECORDED A SURVEY IN SKAMANIA COUNTY UNDER BOOK 3 OF SURVEYS AT PAGE 237. HE STATES COMPUTING THE SOUTHEAST CORNER OF SAID SECTION 16 FROM U.S.C.E COORDINATES. THE SOUTHEAST CORNER OF SAID SECTION 16 HAS BEEN DESTROYED DUE TO THE CONSTRUCTION OF THE SECOND POWER HOUSE AT BONNEVILLE DAM WHICH TOOK PLACE FROM 1974 TO 1982.
- 8) JUNE 27, 2011, JASON L. SIMES, RECORDED A SURVEY IN SKAMANIA COUNTY UNDER AUDITORS FILE NUMBER 2011178518. HE COMPUTES THE SOUTHEAST CORNER OF SAID SECTION 16 FROM THE HAGEDORN SURVEY DESCRIBED IN THE ABOVE PARAGRAPH NUMBER 3. THE SOUTHEAST CORNER OF SAID SECTION 16 HAS BEEN DESTROYED DUE TO THE CONSTRUCTION OF THE SECOND POWER HOUSE AT BONNEVILLE DAM WHICH TOOK PLACE FROM 1974 TO 1982.
- 9) NOVEMBER 16, 2020, DANIEL A. RENTON SET A 3-1/4" ALUMINUM DISK ON A 36"x5/8" REBAR ROD AT THE POSITION COMPUTED IN THE ABOVE DESCRIBED PARAGRAPH 8. THE FOLLOWING OBJECTS BEAR AS FOLLOWS: (A) SW CORNER OF GUARD SHACK BEARS S74°29'53"W, 477.1 FEET TO SAID SECTION CORNER, (B) SW CORNER OF RESTROOM BEARS N82°04'41"W, 244.4 FEET TO SAID SECTION CORNER, (C) OPUS SHARED SOLUTION POINT "BASS 1" PID:BBGZ71, BEARS S03°59'23"E, 195.7' TO SAID SECTION CORNER, (D) SOUTH TRANSMISSION TOWER BEARS S83°21'50"E, 324.5' TO SAID SECTION CORNER. ALL BEARING AND DISTANCES ARE NAD83_2011(EPOCH:2010.0000), WASHINGTON STATE PLANE COORDINATE SYSTEM, SOUTH ZONE, US-FEET.

LAND CORNER RECORD ATTACHMENT

CORNER INFORMATION: DISCUSS THE HISTORY, EVIDENCE FOUND, AND PERPETUATION OF THE CORNER. SHOW THE REFERENCES; PROVIDE THE DATE OF THE FIELD WORK; IF APPLICABLE, MAKE REFERENCE TO A MAP OF RECORD AND/OR THE FIELD BOOK/PAGE NO. USE ADDITIONAL SHEETS AS NEEDED.



LAND CORNER RECORD ATTACHMENT

CORNER INFORMATION: DISCUSS THE HISTORY, EVIDENCE FOUND, AND PERPETUATION OF THE CORNER. SHOW THE REFERENCES; PROVIDE THE DATE OF THE FIELD WORK; IF APPLICABLE, MAKE REFERENCE TO A MAP OF RECORD AND/OR THE FIELD BOOK/PAGE NO. USE ADDITIONAL SHEETS AS NEEDED.

