

VICINITY MAP - NOT TO SCALE
SKAMANIA COUNTY, WASHINGTON

NORTH BONNEVILLE SUBSTATION - PARTIAL DISPOSAL

RECORD OF SURVEY

FOR

BONNEVILLE POWER ADMINISTRATION

IN THE B.B. BISHOP D.L.C. 39 AND

IN THE NORTHEAST 1/4 OF THE NORTHEAST 1/4 AND THE SOUTHEAST 1/4 OF THE NORTHEAST 1/4 OF SECTION 20,
AND THE SOUTHWEST 1/4 OF THE NORTHWEST 1/4 OF SECTION 21,
T2N, R7E, W.M.; SKAMANIA COUNTY, WASHINGTON.

AUDITOR'S CERTIFICATE

FILED FOR RECORD THIS 13 DAY OF April, 2020

AT 1:36 P.M. IN BOOK 1 OF SURVEYS AT PAGE 1
AFN: 2020-000838
AT THE REQUEST OF MACKAY SPOSITO.

Wanda Schmitt
COUNTY AUDITOR - Deputy

BASIS OF BEARINGS

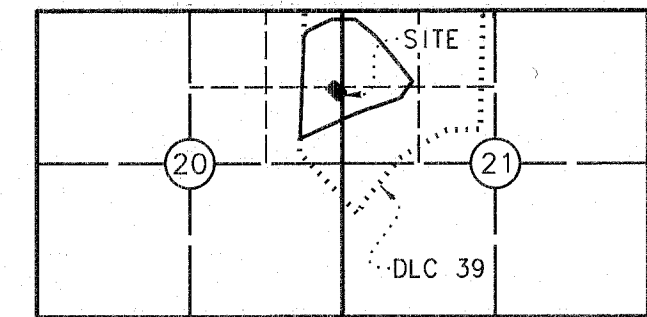
BEARINGS AND COORDINATES SHOWN ARE GRID, BASED ON THE WASHINGTON STATE PLANE COORDINATE SYSTEM, SOUTH ZONE (4602), NAD83(2011)(EPOCH:2010.0), US SURVEY FOOT. DISTANCES SHOWN HEREON ARE GROUND DISTANCES, TO CONVERT DISTANCES SHOWN TO GRID, MULTIPLY BY 1.000047551.

DERIVED FROM OPUS POST PROCESSING USING THE FOLLOWING CORS STATIONS:

STATION DESIGNATION	LATITUDE	LONGITUDE
JIME - DN2111	45°31'23.21416"	122°59'25.84121"
P698 - DH4129	46°10'24.46124"	122°09'38.14195"
GWN5 - DJ6121	45°46'57.46313"	121°19'39.16549"

LEGEND

---	B.P.A. SUBSTATION BOUNDARY
---	PLSS SECTION LINE
---	RIGHT-OF-WAY
---	PRIVATE BOUNDARY
B.P.A.	BONNEVILLE POWER ADMINISTRATION
A.F.N.	AUDITOR'S FILE NUMBER
D.L.C.	DONATION LAND CLAIM



GRID NORTH
COMBINED SCALE FACTOR: 1.000047551
200 0 100 200 400
1 INCH = 200 FEET

REFERENCES

- () (1) A.F.N. 2019-001881
() (2) A.F.N. 2006-161079

PROCEDURES

THIS SURVEY WAS PERFORMED BY FIELD TRAVERSE METHODS USING A 3 SECOND TRIMBLE S6 ROBOTIC TOTAL STATION TOGETHER WITH TRIMBLE R8 AND R10 DUAL FREQUENCY RECEIVERS. AN INDEPENDENT OPUS STATIC PRIMARY CONTROL POINT (NBON-S575) WAS ESTABLISHED BY B.P.A. IN APRIL, 2014 AND USED TO CONTROL THIS SURVEY. SECONDARY CONTROL WAS ESTABLISHED USING RTK GPS METHODS. SURVEY DATA WAS ADJUSTED TO MEET THE CHI-SQUARE TEST AT A 95% CONFIDENCE INTERVAL AND ALL ADJUSTMENTS WERE PERFORMED WITH TRIMBLE BUSINESS CENTER LEAST SQUARES ADJUSTMENT PROGRAM. THE COMBINED SCALE FACTOR OF 1.000047551 FROM NGS OPUS SOLUTION REPORT WAS UTILIZED FOR THIS PROJECT.

SURVEYOR'S NARRATIVE

THE PURPOSE OF THIS SURVEY WAS TO MONUMENT THE BOUNDARIES OF THAT PROPERTY BEING CONVEYED FROM BONNEVILLE POWER ADMINISTRATION TO PUBLIC UTILITY DISTRICT NO.1 OF SKAMANIA COUNTY.

THE EXTERIOR BOUNDARY OF THE B.P.A. NORTH BONNEVILLE SUBSTATION WAS SURVEYED BY MACKAY SPOSITO IN AUGUST 2019 PER SURVEY REFERENCE 1, AFN 2019-001881. THE MONUMENTS SET FOR THE BOUNDARY OF THE EXISTING PUBLIC UTILITY DISTRICT NO.1 OF SKAMANIA COUNTY PARCEL WERE ALSO LOCATED DURING SAID SURVEY.

LEGAL DESCRIPTION

A PARCEL OF LAND IN THE B.B. BISHOP DONATION LAND CLAIM (D.L.C.) NUMBER 39, SITUATED IN THE NORTHEAST QUARTER OF THE NORTHEAST QUARTER AND THE SOUTHEAST QUARTER OF THE NORTHEAST QUARTER OF SECTION 20, AND THE SOUTHWEST QUARTER OF THE NORTHWEST QUARTER OF SECTION 21, ALL IN TOWNSHIP 2 NORTH, RANGE 7 EAST OF THE WILLAMETTE MERIDIAN, SKAMANIA COUNTY, WASHINGTON, AS MORE PARTICULARLY DESCRIBED AS FOLLOWS:

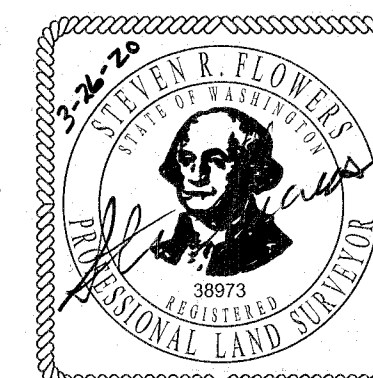
COMMENCING AT A 3-1/2" U.S. CORPS OF ENGINEERS BRASS CAP MARKING AN ANGLE POINT ON THE WEST LINE OF THE B.B. BISHOP D.L.C. NO. 39; THENCE NORTH 23°38'36" EAST 1171.04 FEET TO THE NORTHWEST CORNER OF THAT PARCEL OF LAND CONVEYED TO PUBLIC UTILITY DISTRICT NO.1 OF SKAMANIA COUNTY BY DOCUMENT RECORDED UNDER AUDITOR'S FILE NO. 2006161404, SKAMANIA COUNTY RECORDS; THENCE NORTH 42°47'57" EAST 58.15 FEET ALONG THE NORTH LINE OF SAID PARCEL TO THE NORTHEAST CORNER THEREOF AND THE POINT OF BEGINNING;

THENCE CONTINUING NORTH 42°47'57" EAST 58.17 FEET; THENCE SOUTH 47°11'24" EAST 217.31 FEET; THENCE SOUTH 42°50'14" WEST 58.17 FEET TO THE SOUTHEAST CORNER OF SAID PARCEL; THENCE NORTH 47°11'24" WEST 217.27 WEST ALONG THE EAST LINE OF SAID PARCEL TO THE NORTHEAST CORNER THEREOF AND THE POINT OF BEGINNING.

SURVEYOR'S CERTIFICATE

THIS MAP CORRECTLY REPRESENTS A SURVEY MADE BY ME OR UNDER MY DIRECTION IN CONFORMANCE WITH THE REQUIREMENTS OF THE SURVEY RECORDING ACT AT THE REQUEST OF BONNEVILLE POWER ADMINISTRATION IN MARCH, 2020

Steven R. Flowers 3/26/2020
STEVEN R. FLOWERS, PLS
CERTIFICATE NO. 38973



SECTION 20 & 21, TOWNSHIP 2 NORTH, RANGE 7 EAST, W.M.

Mackay Sposito

ENERGY PUBLIC WORKS LAND DEVELOPMENT

www.mackaysposito.com

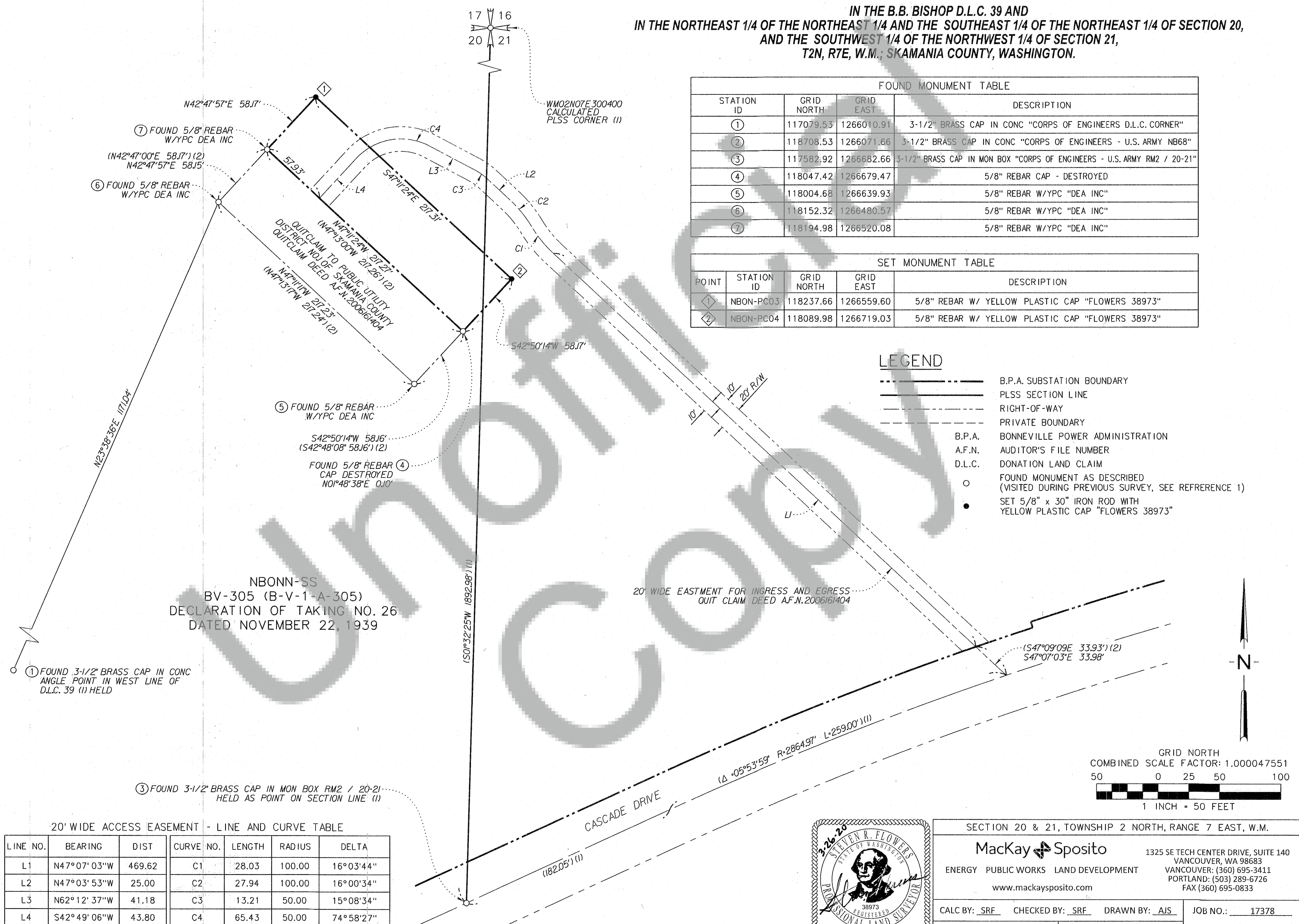
1325 SE TECH CENTER DRIVE, SUITE 140
VANCOUVER, WA 98683
VANCOUVER: (360) 695-3411
PORTLAND: (503) 289-6726
FAX (360) 695-0833

CALC BY: SRF CHECKED BY: SRF DRAWN BY: AJS JOB NO.: 17378

SER NO. 340828-C FILE: NBONN Partial Disposal SHEET 1 OF 2

NORTH BONNEVILLE SUBSTATION - PARTIAL DISPOSAL
RECORD OF SURVEY
FOR
BONNEVILLE POWER ADMINISTRATION

IN THE B.B. BISHOP D.L.C. 39 AND
IN THE NORTHEAST 1/4 OF THE NORTHEAST 1/4 AND THE SOUTHEAST 1/4 OF THE NORTHEAST 1/4 OF SECTION 20,
AND THE SOUTHWEST 1/4 OF THE NORTHWEST 1/4 OF SECTION 21,
T2N, R7E, W.M.; SKAMANIA COUNTY, WASHINGTON.



FOUND MONUMENT TABLE			
STATION ID	GRID NORTH	GRID EAST	DESCRIPTION
①	117079.53	1266010.91	3-1/2" BRASS CAP IN CONC "CORPS OF ENGINEERS D.L.C. CORNER"
②	118708.53	1266071.66	3-1/2" BRASS CAP IN CONC "CORPS OF ENGINEERS - U.S. ARMY NB68"
③	117582.92	1266682.66	3-1/2" BRASS CAP IN MON BOX "CORPS OF ENGINEERS - U.S. ARMY RM2 / 20-21"
④	118047.42	1266679.47	5/8" REBAR CAP - DESTROYED
⑤	118004.68	1266639.93	5/8" REBAR W/YPC "DEA INC"
⑥	118152.32	1266480.57	5/8" REBAR W/YPC "DEA INC"
⑦	118194.98	1266520.08	5/8" REBAR W/YPC "DEA INC"

SET MONUMENT TABLE				
POINT	STATION ID	GRID NORTH	GRID EAST	DESCRIPTION
①	NBON-PC03	118237.66	1266559.60	5/8" REBAR W/ YELLOW PLASTIC CAP "FLOWERS 38973"
②	NBON-PC04	118089.98	1266719.03	5/8" REBAR W/ YELLOW PLASTIC CAP "FLOWERS 38973"

LEGEND

- B.P.A. SUBSTATION BOUNDARY
- PLSS SECTION LINE
- RIGHT-OF-WAY
- PRIVATE BOUNDARY
- B.P.A. BONNEVILLE POWER ADMINISTRATION
- A.F.N. AUDITOR'S FILE NUMBER
- D.L.C. DONATION LAND CLAIM
- FOUND MONUMENT AS DESCRIBED (VISITED DURING PREVIOUS SURVEY, SEE REFERENCE 1)
- SET 5/8" x 30" IRON ROD WITH YELLOW PLASTIC CAP "FLOWERS 38973"

20' WIDE ACCESS EASEMENT - LINE AND CURVE TABLE						
LINE NO.	BEARING	DIST	CURVE NO.	LENGTH	RADIUS	DELTA
L1	N47°07'03"W	469.62	C1	28.03	100.00	16°03'44"
L2	N47°03'53"W	25.00	C2	27.94	100.00	16°00'34"
L3	N62°12'37"W	41.18	C3	13.21	50.00	15°08'34"
L4	S42°49'06"W	43.80	C4	65.43	50.00	74°58'27"



SECTION 20 & 21, TOWNSHIP 2 NORTH, RANGE 7 EAST, W.M.

Mackay Spósito
1325 SE TECH CENTER DRIVE, SUITE 140
VANCOUVER, WA 98683
VANCOUVER: (360) 695-3411
PORTLAND: (503) 289-6726
FAX (360) 695-0833
www.mackaysposito.com

CALC BY: SRF CHECKED BY: SRF DRAWN BY: AJS JOB NO.: 17378

SER NO. 340828-C FILE: NBONN Partial Disposal SHEET 2 OF 2