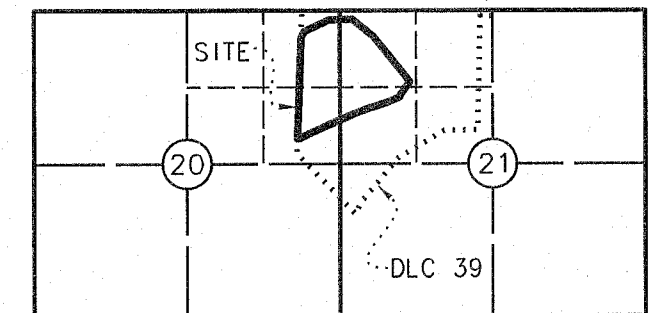


NORTH BONNEVILLE SUBSTATION  
**RECORD OF SURVEY**  
FOR  
BONNEVILLE POWER ADMINISTRATION

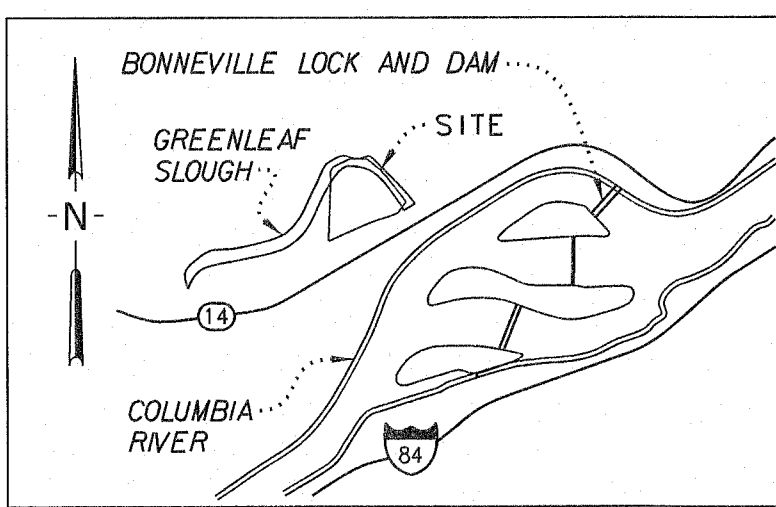
IN THE B.B. BISHOP D.L.C. 39 AND  
IN THE NORTHEAST 1/4 OF THE NORTHEAST 1/4 AND THE SOUTHEAST 1/4 OF THE NORTHEAST 1/4 OF SECTION 20  
AND THE NORTHWEST 1/4 OF THE NORTHWEST 1/4 AND THE SOUTHWEST 1/4 OF THE NORTHWEST 1/4 OF SECTION 21,  
T2N, R7E, W.M.; SKAMANIA COUNTY, WASHINGTON.

AUDITOR'S CERTIFICATE

FILED FOR RECORD THIS 2nd DAY OF October, 2019  
AT 8:16 A.M. IN BOOK 1 OF SURVEYS AT PAGE 1  
AT THE REQUEST OF MACKAY SPOSITO. A.F.N. 2019-01881  
COUNTY AUDITOR - Deputy Auditor



VICINITY MAP - NOT TO SCALE  
SKAMANIA COUNTY, WASHINGTON



LEGEND

- B.P.A. SUBSTATION BOUNDARY
- PLSS SECTION LINE
- RIGHT-OF-WAY
- B.P.A. CONSTRUCTION BASELINE
- WATER LINE - GREENLEAF SLOUGH
- PRIVATE BOUNDARY
- B.P.A.
- A.F.N.
- D.L.C.
- BONNEVILLE POWER ADMINISTRATION
- AUDITOR'S FILE NUMBER
- DONATION LAND CLAIM
- B.P.A. CONSTRUCTION BASELINE MONUMENT

TITLE REPORT

CLARK COUNTY TITLE, LIMITED LIABILITY CERTIFICATE  
ORDER NO. CL13957, EFFECTIVE DATE JULY 31, 2019 WAS  
REFERENCED IN PREPARING THIS RECORD OF SURVEY.

BASIS OF BEARINGS

BEARINGS AND COORDINATES SHOWN ARE GRID, BASED ON THE WASHINGTON STATE PLANE COORDINATE SYSTEM,  
SOUTH ZONE (4602), NAD83(2011) (EPOCH: 2010.0), US SURVEY FOOT. DISTANCES SHOWN HEREON ARE GROUND  
DISTANCES, TO CONVERT DISTANCES SHOWN TO GRID, MULTIPLY BY 1.000047551.

DERIVED FROM OPUS POST PROCESSING USING THE FOLLOWING CORS STATIONS:

STATION DESIGNATION	LATITUDE	LONGITUDE
JIME - DN2111	45°31'23.21416"	122°59'25.84121"
P698 - DH4129	46°10'24.46124"	122°09'38.14195"
GWN5 - DJ6121	45°46'57.46313"	121°19'39.16549"

PROCEDURES

THIS SURVEY WAS PERFORMED BY FIELD TRAVERSE METHODS USING A 3 SECOND TRIMBLE S6 ROBOTIC TOTAL  
STATION TOGETHER WITH TRIMBLE R8 AND R10 DUAL FREQUENCY RECEIVERS. AN INDEPENDENT OPUS STATIC  
PRIMARY CONTROL POINT (NBON-S575) WAS ESTABLISHED BY B.P.A. IN APRIL, 2014 AND USED TO CONTROL THIS  
SURVEY. SECONDARY CONTROL WAS ESTABLISHED USING RTK GPS METHODS. SURVEY DATA WAS ADJUSTED TO MEET  
THE CHI-SQUARE TEST AT A 95% CONFIDENCE INTERVAL AND ALL ADJUSTMENTS WERE PERFORMED WITH TRIMBLE  
BUSINESS CENTER LEAST SQUARES ADJUSTMENT PROGRAM. THE COMBINED SCALE FACTOR OF 1.000047551 FROM  
NGS OPUS SOLUTION REPORT WAS UTILIZED FOR THIS PROJECT.

SURVEYOR'S NARRATIVE

THE PURPOSE OF THIS SURVEY IS TO DEFINE THE BONNEVILLE POWER ADMINISTRATION'S (B.P.A.) SUBSTATION  
PARCEL NBON-SS BY-305 (B-V-1-A-305) AS DESCRIBED IN CIVIL CONDEMNATION AND DECLARATION OF TAKING  
NO. 26, DATED NOVEMBER 22, 1939, DISTRICT COURT OF THE UNITED STATES. THE SOUTHERLY PROPERTY LINE  
WAS ESTABLISHED ALONG THE NORTHERLY RIGHT-OF-WAY LINE OF CASCADE DRIVE AND THE NORTHERLY LINE OF  
LOT S54 BY HOLDING FOUND EXISTING MONUMENTS AS PER THE "SECOND ADDITION TO THE PLATS OF  
RELOCATED NORTH BONNEVILLE", BOOK B, PAGE 74, RECORDS OF SKAMANIA COUNTY. THE SOUTHEAST CORNER OF  
THE PARCEL FALLS IN GREENLEAF SLOUGH, SAID POINT ALSO BEING THE NORTHEAST CORNER OF SAID LOT S54.  
WHICH WAS CALCULATED BY HOLDING RECORD DATA FROM FOUND MONS ALONG THE NORTHERLY RIGHT-OF-WAY  
CASCADE DRIVE. FROM THIS POINT, THE EASTERLY PROPERTY LINE WAS ESTABLISHED ALONG THE APPROXIMATE  
CENTERLINE OF GREENLEAF SLOUGH TO THE SOUTHEASTERLY CORNER OF LOT 4, GREENLEAF COVE SHORT PLAT,  
A.F.N. 2007168025, RECORDS OF SAID COUNTY. FROM THIS POINT, THE NORTHERLY PROPERTY LINE WAS  
ESTABLISHED PER RECORD DATA FROM THE CIVIL TAKING LEGAL DESCRIPTION AND THE GREENLEAF COVE SHORT  
PLAT, TO A POINT ON THE WEST LINE OF THE B.B. BISHOP D.L.C. 39. THE WEST PROPERTY LINE WAS HELD ALONG  
THE WEST LINE OF SAID D.L.C., WHICH WAS ESTABLISHED BETWEEN THE FOUND MONUMENTS AT THE ANGLE POINT  
ON THE WEST LINE AND MONUMENT NUMBER NB68. A PARCEL OF LAND AND AN ACCESS EASEMENT WITHIN THE  
SUBSTATION PARCEL WERE CONVEYED TO THE PUBLIC UTILITY DISTRICT NO. 1 OF SKAMANIA COUNTY PER  
QUITCLAIM DEED RECORDED IN A.F.N. 2006161404, RECORDS OF SAID COUNTY.

LEGAL DESCRIPTION

NBON-SS - DECLARATION OF TAKING NO. 26 - DATED NOVEMBER 22, 1939  
ALL THAT PORTION OF THE B.B. BISHOP D.L.C. 39 IN SECTIONS 20 AND 21, T. 2 N., R. 7 E. W.M., SKAMANIA COUNTY,  
WASHINGTON, LYING NORTH OF THE NORTHERLY RIGHT OF WAY LINE OF THE WASHINGTON STATE EVERGREEN  
HIGHWAY AND SOUTH AND WEST OF THE CENTER LINE OF THE GREEN LEAF SLOUGH. SAID TRACT BEING MORE  
PARTICULARLY DESCRIBED AS FOLLOWS: BEGINNING AT A POINT WHICH IS THE INTERSECTION OF THE WEST LINE  
OF THE B.B. BISHOP D.L.C. 39 WITH THE NORTHERLY RIGHT OF WAY LINE OF THE PRESENT WASHINGTON STATE  
EVERGREEN HIGHWAY, SAID POINT BEING 230.48 FEET NORTH AND 4.06 FEET EAST OF THE ANGLE CORNER ON  
THE WEST LINE OF THE SAID B.B. BISHOP D.L.C. 39. SAID CORNER BEING MARKED BY A U.S.E.D. CONCRETE  
MONUMENT; THENCE ALONG THE NORTHERLY RIGHT OF WAY LINE OF THE WASHINGTON STATE EVERGREEN HIGHWAY  
AS FOLLOWS: N64°20'20"E A DISTANCE OF 894.43 FEET; THENCE ON A 2895.00 FT. RADIUS CURVE TO THE RIGHT  
(THE LONG CHORD OF WHICH BEARS N69°11'20"E 489.52 FEET) A DISTANCE OF 490.11 FEET; THENCE N74°02'20"E  
A DISTANCE OF 458.40 FEET; THENCE N15°57'40"W A DISTANCE OF 20.00 FEET; THENCE N74°02'20"E A DISTANCE  
OF 400.00 FEET TO THE INTERSECTION OF THE NORTHERLY RIGHT OF WAY LINE OF THE SAID STATE OF  
WASHINGTON EVERGREEN HIGHWAY WITH THE CENTER LINE OF THE GREEN LEAF SLOUGH; THENCE DOWN THE  
CENTER LINE OF THE GREEN LEAF SLOUGH ALONG THE MEANDER LINE OF SAID CENTER LINE AS FOLLOWS:  
N39°43'50"W A DISTANCE OF 1142.02 FEET; THENCE N52°01'W A DISTANCE OF 575.83 FEET; THENCE S87°59'W  
A DISTANCE OF 400 FEET; THENCE S63°02'W A DISTANCE OF 450.00 FEET; THENCE S28°02'W A DISTANCE OF  
113.13 FEET TO THE INTERSECTION OF THE CENTER LINE OF THE SAID GREEN LEAF SLOUGH WITH THE WEST  
LINE OF THE B.B. BISHOP D.L.C. 39; THENCE S1°00'35"W ALONG THE WEST LINE OF THE SAID B.B. BISHOP  
D.L.C. 39 A DISTANCE OF 1718.53 FEET, MORE OR LESS, TO THE POINT OF BEGINNING.

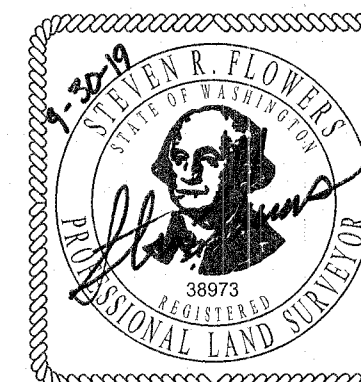
SURVEYOR'S CERTIFICATE

THIS MAP CORRECTLY REPRESENTS A SURVEY MADE  
BY ME OR UNDER MY DIRECTION IN CONFORMANCE  
WITH THE REQUIREMENTS OF THE SURVEY  
RECORDING ACT AT THE REQUEST OF BONNEVILLE  
POWER ADMINISTRATION IN AUGUST, 2019

STEVEN R. FLOWERS, PLS  
CERTIFICATE NO. 38973  
9-30-2019

REFERENCES

- ( ) (1) SECOND ADDITION TO THE PLATS OF  
RELOCATED NORTH BONNEVILLE, BOOK B PAGE 74
- ( ) (2) DEBBIE SULLIVAN SHORT PLAT BOOK T PAGE PAGE 98
- ( ) (3) GREENLEAF COVE SHORT PLAT, A.F.N. 2007168025
- ( ) (4) TAKING - CIVIL NUMBER 26, NOVEMBER 22, 1939
- ( ) (5) SURVEY A.F.N. 2006161079
- ( ) (6) FIRST ADDITION TO THE PLATS OF RELOCATED  
NORTH BONNEVILLE - LOTS R12-R13-R14, BOOK B PAGE 39
- ( ) (7) J & M SHORT PLAT, A.F.N. 2006162121
- ( ) (8) SURVEY A.F.N. 2013000672
- ( ) (9) GENERAL SERVICES ADMINISTRATION LETTER DATED  
MAY 20, 1980, TRANSFER OF REAL PROPERTY TO THE CORP  
OF ENGINEERS, DEPARTMENT OF THE ARMY, TRACT T, PARCELS  
4 OF 5 AND 5 OF 5 ON FILE IN THE BONNEVILLE POWER  
ADMINISTRATION RECORDS, CASE NUMBER 19920712.



SECTION 20 & 21, TOWNSHIP 2 NORTH, RANGE 7 EAST, W.M.

Mackay Sposito

ENERGY PUBLIC WORKS LAND DEVELOPMENT

www.mackaysposito.com

1325 SE TECH CENTER DRIVE, SUITE 140  
VANCOUVER, WA 98683  
VANCOUVER: (360) 695-3411  
PORTLAND: (503) 289-6726  
FAX (360) 695-0833

CALC BY: SRF CHECKED BY: SRF DRAWN BY: AJS JOB NO.: 17247

SER NO. 340798-C FILE: North Bonneville SS ROS SHEET 1 OF 4

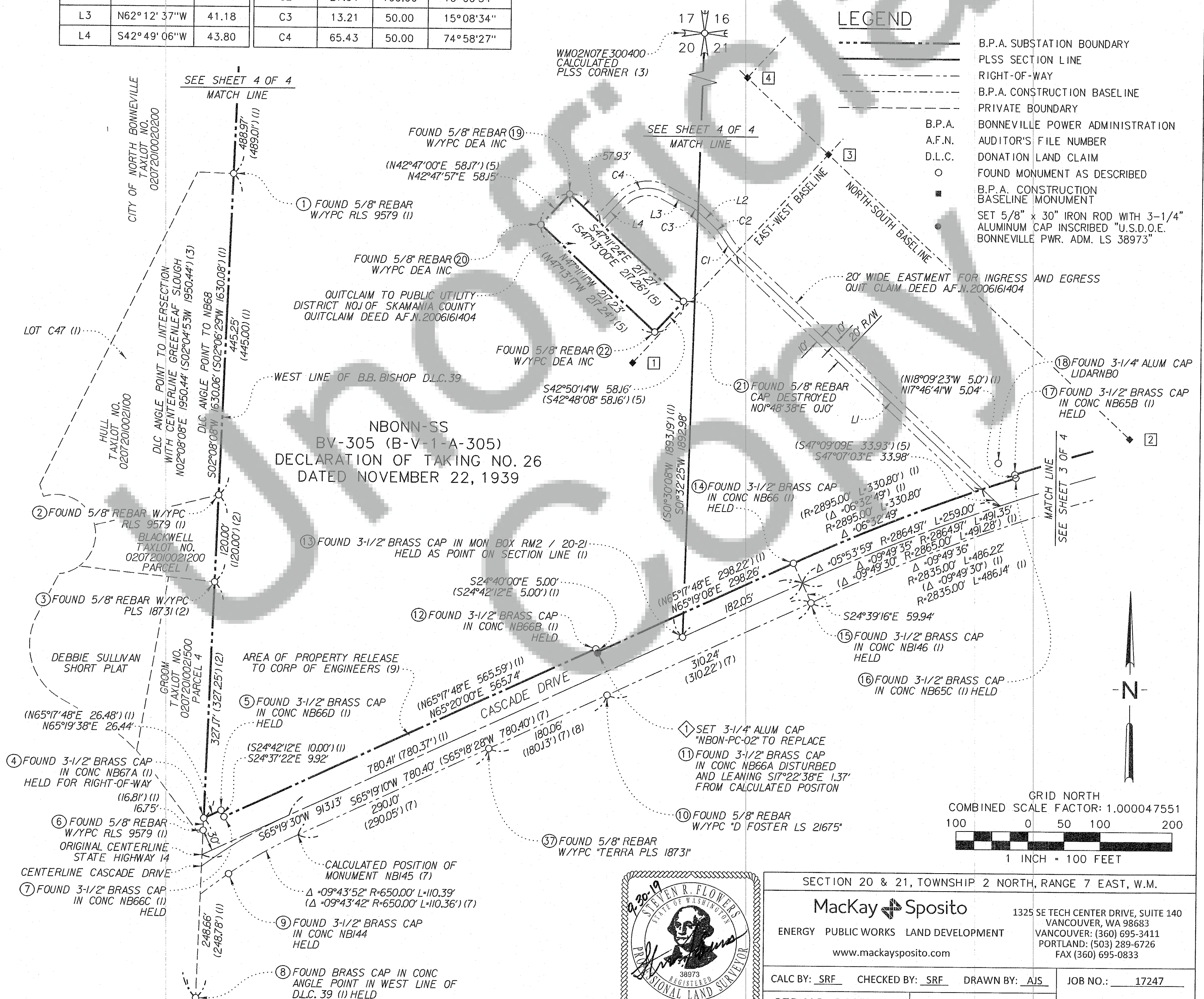


**IN THE B.B. BISHOP D.L.C. 39 AND  
IN THE NORTHEAST 1/4 OF THE NORTHEAST 1/4 AND  
THE SOUTHEAST 1/4 OF THE NORTHEAST 1/4 OF SECTION 20  
AND THE NORTHWEST 1/4 OF THE NORTHWEST 1/4  
AND THE SOUTHWEST 1/4 OF THE NORTHWEST 1/4 OF SECTION 21,  
T2N, R7E, W.M.; SKAMANIA COUNTY, WASHINGTON.**

CONSTRUCTION BASELINE MONUMENT TABLE				
POINT	STATION ID	GRID NORTH	GRID EAST	DESCRIPTION
1	NBON-W396	117961.96	1266609.78	3-1/4" B.P.A. ALUMINUM CAP "NBON W396 MCN14"
2	NBON-S575	117861.83	1267300.75	3-1/4" B.P.A. ALUMINUM CAP "NBON S575 MCN14"
3	NBON-INTX	118252.53	1266878.85	3-1/4" B.P.A. ALUMINUM CAP "NBON INTX MCN14"
4	NBON-N155	118357.85	1266765.13	3-1/4" B.P.A. ALUMINUM CAP "NBON N155 MCN14"

LINE NO.	BEARING	DIST	CURVE NO.	LENGTH	RADIUS	DELTA
L1	N47°07'03"W	469.62	C1	28.03	100.00	16°03'44"
L2	N47°03'53"W	25.00	C2	27.94	100.00	16°00'34"
L3	N62°12'37"W	41.18	C3	13.21	50.00	15°08'34"
L4	S42°49'06"W	43.80	C4	65.43	50.00	74°58'27"

FOUND MONUMENT TABLE			
STATION ID	GRID NORTH	GRID EAST	DESCRIPTION
①	118219.88	1266053.32	5/8" REBAR W/YPC "HAGEDORN RLS 9579"
②	117774.91	1266036.92	5/8" REBAR W/YPC "HAGEDORN RLS 9579"
③	117654.99	1266032.37	5/8" REBAR W/YPC "TERRA PLS 18731"
④	117328.05	1266020.22	3-1/2" BRASS CAP IN CONC "CORPS OF ENGINEERS - U.S. ARMY NB67A"
⑤	117339.06	1266044.20	3-1/2" BRASS CAP IN CONC "CORPS OF ENGINEERS - U.S. ARMY NB66D"
⑥	117311.29	1266019.54	5/8" REBAR W/YPC "HAGEDORN RLS 9579"
⑦	117330.04	1266048.34	3-1/2" BRASS CAP IN CONC "CORPS OF ENGINEERS - U.S. ARMY NB66C"
⑧	117079.53	1266010.91	3-1/2" BRASS CAP IN CONC "CORPS OF ENGINEERS D.L.C. CORNER"
⑨	117251.53	1266055.47	3-1/2" BRASS CAP IN CONC "CORPS OF ENGINEERS - U.S. ARMY NB144"
⑩	117502.14	1266578.68	5/8" REBAR W/YPC "D FOSTER LS 21675"
⑪	117560.31	1266564.98	3-1/2" BRASS CAP IN CONC "CORPS OF ENGINEERS NB66A" - DISTURBED
⑫	117566.16	1266562.48	3-1/2" BRASS CAP IN CONC "CORPS OF ENGINEERS - U.S. ARMY NB66B"
⑬	117582.92	1266682.66	3-1/2" BRASS CAP IN MON BOX "CORPS OF ENGINEERS - U.S. ARMY RM2 / 20-21"
⑭	117686.16	1266835.59	3-1/2" BRASS CAP IN CONC "CORPS OF ENGINEERS - U.S. ARMY NB66"
⑮	117631.68	1266860.60	3-1/2" BRASS CAP IN CONC "CORPS OF ENGINEERS - U.S. ARMY NB146"
⑯	117806.82	1267143.42	3-1/2" BRASS CAP IN CONC "CORPS OF ENGINEERS - U.S. ARMY NB65C"
⑰	117811.62	1267141.88	3-1/2" BRASS CAP IN CONC "CORPS OF ENGINEERS - U.S. ARMY NB65B"
⑱	117827.31	1267118.88	3-1/4" B.P.A. ALUM CAP "LIDARNBO OBE08"
⑲	118194.98	1266520.08	5/8" REBAR W/YPC "DEA INC"
⑳	118152.32	1266480.57	5/8" REBAR W/YPC "DEA INC"
㉑	118047.42	1266679.47	5/8" REBAR CAP - DESTROYED
㉒	118004.68	1266639.93	5/8" REBAR W/YPC "DEA INC"
㉓	117426.90	1266415.08	5/8" REBAR W/YPC "TERRA PLS 18731"



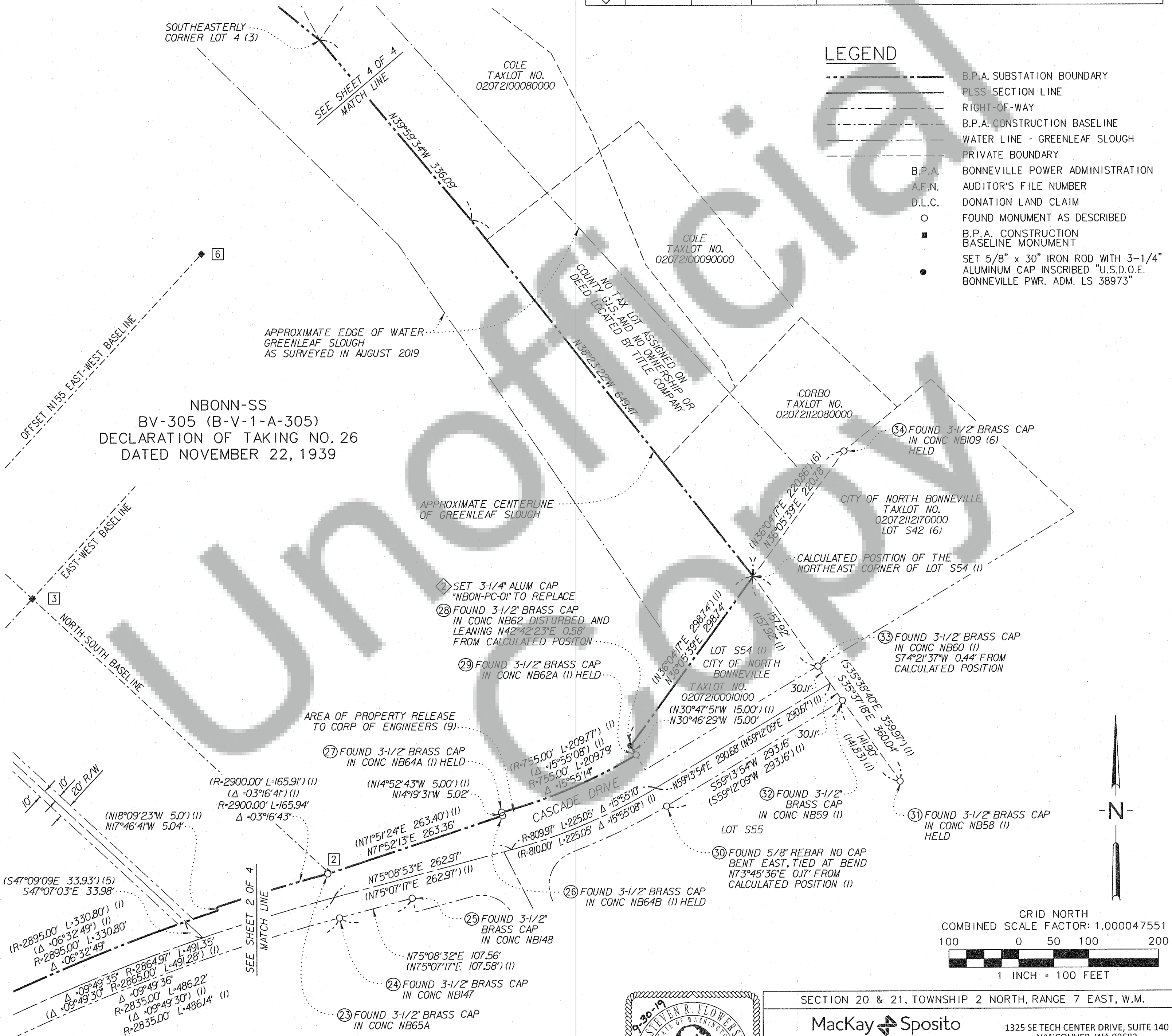


NORTH BONNEVILLE SUBSTATION  
**RECORD OF SURVEY**  
FOR  
BONNEVILLE POWER ADMINISTRATION  
IN THE B.B. BISHOP D.L.C. 39 AND  
IN THE NORTHEAST 1/4 OF THE NORTHEAST 1/4 AND  
THE SOUTHEAST 1/4 OF THE NORTHEAST 1/4 OF SECTION 20  
AND THE NORTHWEST 1/4 OF THE NORTHWEST 1/4  
AND THE SOUTHWEST 1/4 OF THE NORTHWEST 1/4 OF SECTION 21,  
T2N, R7E, W.M.; SKAMANIA COUNTY, WASHINGTON.

CONSTRUCTION BASELINE MONUMENT TABLE				
POINT	STATION ID	GRID NORTH	GRID EAST	DESCRIPTION
2	NBON-S575	117861.83	1267300.75	3-1/4" B.P.A. ALUMINUM CAP "NBON S575 MCN14"
3	NBON-INTX	118252.53	1266878.85	3-1/4" B.P.A. ALUMINUM CAP "NBON INTX MCN14"
6	NBON-N155E525	118743.06	1267121.87	3-1/4" B.P.A. ALUMINUM CAP "NBON N155E525 MCN14"

FOUND MONUMENT TABLE			
STATION ID	GRID NORTH	GRID EAST	DESCRIPTION
23	117858.71	1267300.99	3-1/2" BRASS CAP IN CONC "CORPS OF ENGINEERS - U.S. ARMY NB65A"
24	117795.93	1267317.63	3-1/2" BRASS CAP IN CONC "CORPS OF ENGINEERS - U.S. ARMY NB147"
25	117823.51	1267421.60	3-1/2" BRASS CAP IN CONC "CORPS OF ENGINEERS - U.S. ARMY NB148"
26	117940.67	1267551.29	3-1/2" BRASS CAP IN CONC "CORPS OF ENGINEERS - U.S. ARMY NB64B"
27	117945.53	1267550.05	3-1/2" BRASS CAP IN CONC "CORPS OF ENGINEERS - U.S. ARMY NB64A"
28	118039.91	1267734.75	3-1/2" BRASS CAP IN CONC "CORPS OF ENGINEERS NB62" - DISTURBED
29	118026.60	1267742.82	3-1/2" BRASS CAP IN CONC "CORPS OF ENGINEERS - U.S. ARMY NB62A"
30	117953.54	1267786.46	5/8" REBAR NO CAP - BENT
31	117988.21	1268120.86	3-1/2" BRASS CAP IN CONC "CORPS OF ENGINEERS - U.S. ARMY NB58"
32	118103.55	1268038.29	3-1/2" BRASS CAP IN CONC "CORPS OF ENGINEERS - U.S. ARMY NB59"
33	118152.63	1268003.55	3-1/2" BRASS CAP IN CONC "CORPS OF ENGINEERS - U.S. ARMY NB60"
34	118459.30	1268041.22	3-1/2" BRASS CAP IN CONC "CORPS OF ENGINEERS - U.S. ARMY NB109"

SET MONUMENT TABLE				
POINT	STATION ID	GRID NORTH	GRID EAST	DESCRIPTION
2	NBON-PC-01	118039.48	1267735.15	3-1/4" B.P.A. ALUMINUM CAP "NBON-PC-01 MSI 19 LS38973"





# NORTH BONNEVILLE SUBSTATION RECORD OF SURVEY

FOR  
BONNEVILLE POWER ADMINISTRATION  
IN THE B.B. BISHOP D.L.C. 39 AND  
IN THE NORTHEAST 1/4 OF THE NORTHEAST 1/4 AND  
THE SOUTHEAST 1/4 OF THE NORTHEAST 1/4 OF SECTION 20  
AND THE NORTHWEST 1/4 OF THE NORTHWEST 1/4  
AND THE SOUTHWEST 1/4 OF THE NORTHWEST 1/4 OF SECTION 21,  
T2N, R7E, W.M.; SKAMANIA COUNTY, WASHINGTON.

## LEGEND

- B.P.A. SUBSTATION BOUNDARY
- PLSS SECTION LINE
- RIGHT-OF-WAY
- B.P.A. CONSTRUCTION BASELINE
- WATER LINE - GREENLEAF SLOUGH
- PRIVATE BOUNDARY
- B.P.A. BONNEVILLE POWER ADMINISTRATION
- A.F.N. AUDITOR'S FILE NUMBER
- D.L.C. DONATION LAND CLAIM
- FOUND MONUMENT AS DESCRIBED
- B.P.A. CONSTRUCTION BASELINE MONUMENT
- SET 5/8" x 30" IRON ROD WITH 3-1/4" ALUMINUM CAP INSCRIBED "U.S.D.O.E. BONNEVILLE PWR. ADM. LS 38973"

