

RECORD OF SURVEY

FOR THE BONNEVILLE POWER ADMINISTRATION
BONNEVILLE-COULEE LINE RIGHT-OF-WAY MILES 9 THRU 11
AND STEVENSON TAP TO BONNEVILLE-ALCOA No. 1 & 2
RIGHT-OF-WAY MILE 9

PROJECT LOCATION

IN THE SOUTHWEST 1/4 OF THE NORTHEAST 1/4, THE SOUTHEAST 1/4 OF THE NORTHEAST 1/4 AND THE NORTHEAST 1/4 OF THE NORTHEAST 1/4 OF SECTION 30, THE SOUTHWEST 1/4 OF THE NORTHWEST 1/4, THE NORTHWEST 1/4 OF THE NORTHWEST 1/4, THE SOUTHEAST 1/4 OF THE NORTHWEST 1/4, THE NORTHEAST 1/4 OF THE NORTHWEST 1/4, THE SOUTHWEST 1/4 OF THE NORTHEAST 1/4, THE NORTHWEST 1/4 OF THE NORTHEAST 1/4, THE SOUTHEAST 1/4 OF THE NORTHEAST 1/4, AND THE NORTHEAST 1/4 OF THE NORTHEAST 1/4 OF SECTION 29, THE NORTHWEST 1/4 OF THE NORTHWEST 1/4, THE NORTHEAST 1/4 OF THE NORTHWEST 1/4, THE NORTHWEST 1/4 OF THE NORTHEAST 1/4, GOVERNMENT LOT 6 AND GOVERNMENT LOT 7 OF SECTION 28, ALL IN T.3N, R.8E, W.M.; SKAMANIA COUNTY, WASHINGTON

TABLE OF CONTENTS

SHEET 1	VICINITY MAP, PROJECT LOCATION, SHEET INDEX, AUDITOR'S CERTIFICATE, BASIS OF BEARINGS, PURPOSE OF SURVEY, SURVEYOR NOTES, SURVEYOR'S CERTIFICATE
SHEET 2	HISTORY OF RIGHT-OF-WAY ACQUISITION, ANALYSIS OF RECORD DOCUMENTS, CONTROL AND PROCEDURES, RETRACEMENT AND ANALYSIS PROCEDURES, SURVEY LINE RESOLUTION NOTES
SHEET 3	SURVEY LINE RESOLUTION NOTES CONTINUED, B.P.A. MAPPING CADASTRAL TIES, SURVEY REFERENCES, ACQUISITION TABLES
SHEET 4-7	ACQUISITION SURVEY LINE RETRACEMENT

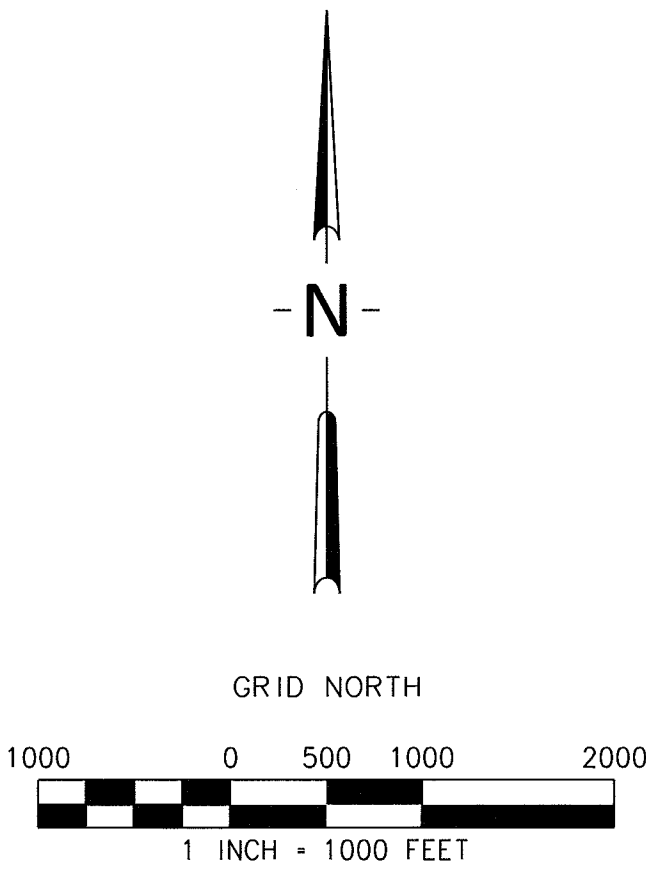
PURPOSE OF SURVEY

THE BONNEVILLE POWER ADMINISTRATION (B.P.A.), PART OF THE U.S. DEPARTMENT OF ENERGY HAS REQUESTED MACKAY SPOSITO INC. TO PROVIDE A RETRACEMENT SURVEY OF A PORTION OF B.P.A.'S BONNEVILLE-COULEE LINE AND STEVENSON TAP TO BONNEVILLE-ALCOA NO. 1 & 2 TRANSMISSION LINE RIGHT-OF-WAY CORRIDOR IN SKAMANIA COUNTY, WASHINGTON. THE REQUEST WAS TO DELINEATE THE SURVEY LINE AND THE NORTHERLY AND SOUTHERLY LIMITS OF B.P.A.'S RIGHT-OF-WAY WITHIN THE PROJECT AREA.

THE PROJECT IS WITHIN THE BONNEVILLE-COULEE LINE MILES 9 THROUGH 11 BETWEEN TOWER AS45 (STATION 478+56.88 IN SECTION 30, T. 3 N., R. 8 E., W.M.) AND TOWER AS56 (STATION 576+00.00 IN SECTION 28, T. 3 N., R. 8 E., W.M.). ALSO WITHIN THE STEVENSON TAP TO BONNEVILLE-ALCOA NO. 1 & 2 LINE'S MILE 9 BETWEEN STATION 477+06.0 AND STATION 512+22.0 IN SECTIONS 29 AND 30, T. 3 N., R. 8 E., W.M.

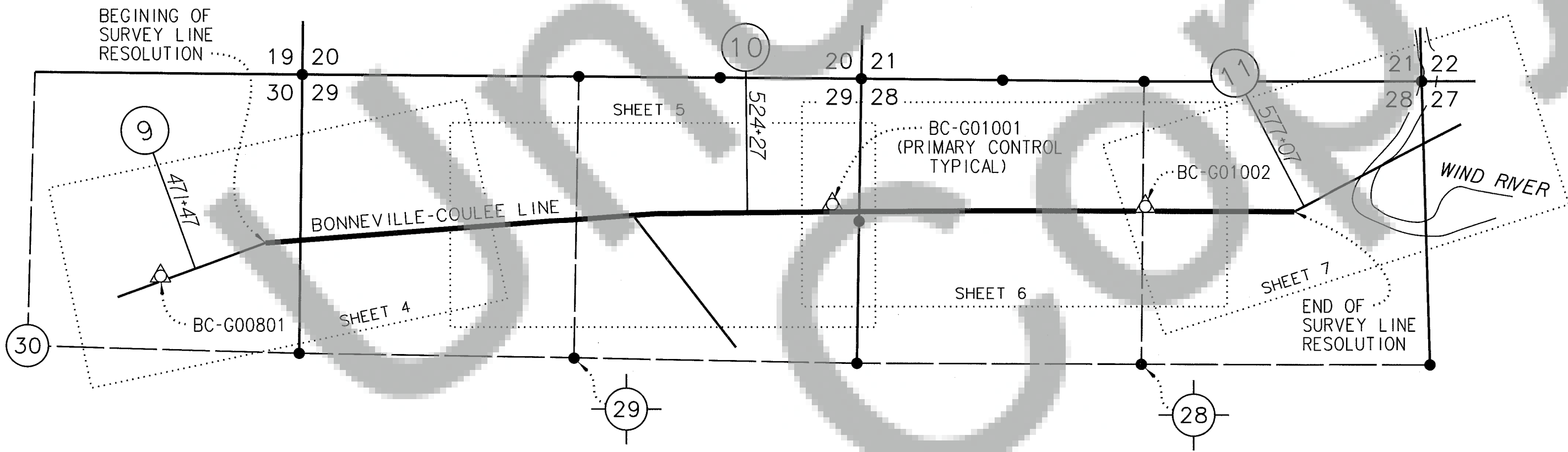
AUDITOR'S CERTIFICATE

FILED FOR RECORD THIS 1st DAY OF October, 2018
AT 3:11 P.M. IN BOOK 1 OF SURVEYS AT PAGE 1
AT THE REQUEST OF MACKAY SPOSITO. AFN # 2018001992
COUNTY AUDITOR - Deputy



LEGEND

- XXX-XX (X) BONNEVILLE-COULEE LINE MILE MARKER STATION PER B.P.A. MILE MAPS
- ACQUISITION SURVEY LINE
- SECTION LINE
- QUARTER SECTION LINE
- SHEET LAYOUT
- B.P.A. BONNEVILLE POWER ADMINISTRATION
- FOUND CADASTRAL CORNER
- CONTROL MONUMENT AS NOTED
- XX CENTER OF SECTION



SURVEYOR NOTES

- ALL RECORD STATIONING IS BASED ON ORIGINAL B.P.A. PLAN MAPS. "MEAS" IS STATIONING DERIVED FROM MEASUREMENTS IN THIS SURVEY.
- THERE MAY BE ADDITIONAL B.P.A. REAL PROPERTY RIGHTS THAT EXTEND BEYOND THE RIGHT-OF-WAY LIMITS SHOWN.
- THIS SURVEY DOES NOT ADDRESS ENCROACHMENTS TO THE B.P.A. RIGHT-OF-WAY.
- TRANSMISSION LINE OPERATING NAMES ARE SUBJECT TO CHANGE BY B.P.A.

BASIS OF BEARINGS

BEARINGS AND COORDINATES SHOWN ARE GRID, BASED ON THE WASHINGTON STATE PLANE COORDINATE SYSTEM, SOUTH ZONE (4602), NAD83(2011)(EPOCH:2010.0), US SURVEY FOOT. DISTANCES SHOWN HEREON ARE GROUND DISTANCES, TO CONVERT DISTANCES SHOWN TO GRID, MULTIPLY BY 1.00000219.

MACKAY SPOSITO MAKES NO WARRANTIES AS TO MATTERS OF UNWRITTEN TITLE SUCH AS ACQUIESCENCE, ESTOPPEL, ADVERSE POSSESSION, ETC. OR WHETHER PARCELS SHOWN HEREON ARE LEGAL LOTS FOR ZONING PURPOSES, ETC.

SURVEYOR'S CERTIFICATE

THIS MAP CORRECTLY REPRESENTS A SURVEY MADE BY ME OR UNDER MY DIRECTION IN CONFORMANCE WITH THE REQUIREMENTS OF THE SURVEY RECORDING ACT AT THE REQUEST OF BONNEVILLE POWER ADMINISTRATION IN JULY-AUGUST, 2018

Steven R. Flowers 9/25/2018
STEVEN R. FLOWERS, PLS
CERTIFICATE NO. 38973



Mackay Sposito

ENERGY PUBLIC WORKS LAND DEVELOPMENT
www.mackaysposito.com

1325 SE TECH CENTER DRIVE, SUITE 140
VANCOUVER, WA 98683
VANCOUVER: (360) 695-3411
PORTLAND: (503) 289-6726
FAX (360) 695-0833

CALC BY: SRF	CHECKED BY: SRF	DRAWN BY: AJS	JOB NO.: 17026
SER NO 335973-C	FILE: 17026-R-1-0	SHEET 1 OF 7	

RECORD OF SURVEY

FOR THE BONNEVILLE POWER ADMINISTRATION

BONNEVILLE-COULEE LINE RIGHT-OF-WAY MILES 9 THRU 11

AND STEVENSON TAP TO BONNEVILLE-ALCOA No. 1 & 2

RIGHT-OF-WAY THRU MILE 9

HISTORY OF RIGHT-OF-WAY ACQUISITION

BPA ACQUIRED THE BONNEVILLE-COULEE LINE RIGHT-OF-WAY, MILES 9 THROUGH 11, IN FEE BY CONDEMNATION IN 1939 TO 1941. THE ACQUISITIONS ARE IDENTIFIED AS TRACTS BC-43 AND BC-44, BC-45EE, BC-46 AND BC-47, BC-48CC, BC-49 THROUGH BC-57, BC-58DD, BC-59HH, BC-60DD, BC-61HH AND BC-2000 AND ON THE BONNEVILLE-COULEE LINE 2 MILE MAPS (BPA DRAWING SERIAL NUMBERS 1180-1181). THE RIGHT-OF-WAY IS DESCRIBED AS 300 FEET IN WIDTH, 212.5 FEET LEFT AND 87.5 FEET RIGHT OF THE BONNEVILLE-COULEE SURVEY LINE.

THE ORIGINAL BONNEVILLE-COULEE LINE (MILES 10 THROUGH 12) HAS BEEN GIVEN THE DESIGN NAME BONNEVILLE-COULEE LINE 2 ON PLAN AND PROFILE MAPS PER REVISION DATED 1949. THE LINE IS NOW OPERATED AS NORTH BONNEVILLE-MIDWAY NO.1 (MILES 9 THROUGH 11) TRANSMISSION LINE.

SUBSEQUENT TO THE ACQUISITION OF THE BONNEVILLE-COULEE LINE RIGHT-OF-WAY, THE BONNEVILLE-COULEE LINE NO.1 TRANSMISSION LINE WAS DESIGNED AND BUILT WITHIN THE BONNEVILLE-COULEE LINE FEE OWNED RIGHT-OF-WAY. THE LINE IS NOW OPERATED AS THE UNDERWOOD TAP TO BONNEVILLE PH1-ALCOA NO. 1 & 2.

BPA ACQUIRED THE STEVENSON TAP TO BONNEVILLE-ALCOA NO. 1 & 2 RIGHT-OF-WAY EASEMENTS (MILE 9) BY DEED CONVEYANCE IN 1963. THE ACQUISITIONS ARE IDENTIFIED AS TRACTS ST-38 THROUGH ST-41 AND ST-41A ON THE STEVENSON TAP TO BONNEVILLE-ALCOA NO 1 & 2 MILE MAP (BPA DRAWING SERIAL NUMBER 125909). THE SOUTHERLY RIGHT-OF-WAY LINE IS DESCRIBED AS RUNNING PARALLEL WITH, AND ADJOINING THE EXISTING 300 FOOT RIGHT-OF-WAY FOR THE BPA BONNEVILLE-COULEE LINE. FOR THE NORTHERLY RIGHT-OF-WAY LINE, DESCRIPTIONS ARE A DEFINED WIDTH LYING NORTHERLY AND RELATIVE TO THE SURVEY LINE OF STEVENSON TAP TO BONNEVILLE-ALCOA NO. 1 & 2 TRANSMISSION LINE. THIS LINE FOR MOST OF THE PROJECT AREAS HAS BEEN REMOVED WITH THE EXCEPTION OF ONE REMAINING TOWER AT STATION 511+77.0. THE LINE EXTENDS SOUTHEASTERLY FROM HERE OUTSIDE OF THIS PROJECT LIMITS.

ANALYSIS OF RECORD DOCUMENTS

RECORD DOCUMENTS FOR THE BONNEVILLE-COULEE LINE AND STEVENSON TAP TO BONNEVILLE-ALCOA NO. 1 & 2 TRANSMISSION LINES WERE ACQUIRED AS SHOWN ON THE MILE MAPS. THE STATION AND DISTANCE CALLS FOR THE SURVEY LINES AND CADASTRAL TIES IN THE DESCRIPTIONS ARE AS SHOWN ON BPA MAPPING.

CONTROL AND PROCEDURES

DURING JULY, 2018, MACKAY SPOSITO ESTABLISHED PRIMARY AND SECONDARY CONTROL POINTS AND CONDUCTED A PRELIMINARY RETRACEMENT FIELD SURVEY FOR THE PROJECT. MEASUREMENTS WERE OBSERVED TO ANGLE POINT TOWER CENTERS, ON-LINE (P.O.T.) TOWER CENTERS, RECOVERED ANGLE POINT MONUMENTS AND PUBLIC LAND SURVEY SYSTEM (PLSS) CORNERS.

STATIC AND RTK GPS MEASUREMENTS WERE USED IN THE FIELD SURVEY. THE PRIMARY CONTROL POINTS WERE MEASURED WITH STATIC GPS OBSERVATIONS. SECONDARY CONTROL POINTS AND FOUND PLSS CORNERS WERE MEASURED WITH RTK GPS MEASUREMENTS FROM TWO INDEPENDENT CONTROL POINTS.

TERRESTRIAL MEASUREMENTS WERE ALSO USED IN AREAS UNSUITABLE FOR USING GPS METHODS. DATA WAS COLLECTED RELATIVE TO TWO OR THREE SECONDARY CONTROL POINTS USING REDUNDANT MEASUREMENTS.

SCALE FACTORS WE COMPUTED AT THE SURVEY LINE ANGLE POINTS AND UTILIZED TO COMPUTE A MEAN PROJECT SCALE FACTOR. USING A MEAN SCALE FACTOR RESULTS IN A LESS THAN 0.1 FEET ABSOLUTE ERROR IN DISTANCE OVER THE LENGTH OF THE SURVEY LINE.
PROJECT SCALE FACTOR = 1.00000219.

TOWER CENTERS WERE COMPUTED AT THE INTERSECTION OF GPS RTK MEASUREMENTS TAKEN AT EACH OF THE FOUR TOWER LEGS.

RETRACEMENT AND ANALYSIS PROCEDURES

THE SURVEY LINE AND ASSOCIATED TIES TO CADASTRAL MONUMENTS SHOWN ON BPA BONNEVILLE-COULEE LINE 2 PLAN AND PROFILE MAPS (SERIAL NUMBERS 1180 THROUGH 1182), BPA BONNEVILLE-COULEE LINE RIGHT-OF-WAY PLAT MAPS (SERIAL NUMBERS 2994 THROUGH 2995), BPA STEVENSON TAP TO BONNEVILLE-ALCOA NO. 1 & 2 PLAN MAP (SERIAL NUMBER 125909) AND BPA BONNEVILLE-COULEE LINE NO. 1 PLAN AND PROFILE MAPS (SERIAL NUMBERS 7675 THROUGH 7677) WERE CONFIRMED BY REVIEWING ACQUISITION DOCUMENTS. BPA STEEL TOWER SITE DATA LISTS WERE REVIEWED TO IDENTIFY OFFSET TOWERS AND RECORD OFFSET DISTANCES TO SURVEY ANGLE POINTS. POSITIONS OF ANGLE POINT AND P.O.T. STRUCTURES WERE MEASURED. RECOVERED BPA ANGLE POINT AND CADASTRAL MONUMENTS WERE EVALUATED. THE RESULTING RETRACED SURVEY LINE REPRESENTS A BEST-FIT SOLUTION TO THE MEASURED ELEMENTS LISTED ABOVE.

MACKAY SPOSITO MEASURED TO ANGLE POINT TOWERS, ADDITIONAL ON-LINE TOWERS, RECOVERED ANGLE POINT AND CADASTRAL CORNERS. FIELD SEARCHES WERE MADE FOR P.O.T. MONUMENTS AND ANGLE POINT MONUMENTS AT LOCATIONS SHOWN ON BPA'S MILE MAPS. BPA ALUMINUM CAPS WERE FOUND AT ANGLE POINT TOWERS AS36(7/2), STATION 376+56.4 AND AS45(9/1), STATION 478+56.88.

BPA ALSO PROVIDED A STEEL TOWER SITE DATA LIST AND LIDAR POSITIONS OF TOWER CENTERS (CENTROIDS) FROM LIDAR FLIGHT SCAN DATA. THE ABOVE ITEMS AND OTHER DATA WERE CONSIDERED IN RESOLVING THE SURVEY ACQUISITION LINE.

SURVEY LINE RESOLUTION NOTES

BONNEVILLE-COULEE LINE

THE TANGENT BETWEEN STATIONS 478+56.88 AND 515+50.00 WAS RESOLVED BY HOLDING THE FOUND BPA MONUMENT AT RECORD OFFSET OF 0.7'RT FROM THE SURVEY LINE TO THE TOWER CENTER AT AS45(9/1) AND HOLDING THE RECORD OFFSET OF 1.9'LT FROM THE SURVEY LINE TO THE TOWER CENTER AT AS50(9/6). THE MEASURED DISTANCE IS 1.19 FEET SHORTER THAN RECORD. THE FOUND MONUMENT AT RECORD OFFSET OF 0.3'LT FROM THE SURVEY LINE TO THE TOWER CENTER AT AS36(7/2) WAS SURVEYED FOR A CHECK OF THE DEFLECTION ANGLE. THE MEASURED DEFLECTION ANGLE AT STATION 478+56.88 IS 15°45'07"RT THAT DIFFERS FROM THE RECORD ANGLE BY 00°00'23".

THE TANGENT BETWEEN STATIONS 515+50.00 AND 530+99.81BK(531+00.00AH) WAS RESOLVED BY HOLDING THE RECORD OFFSET OF 1.9'LT FROM THE SURVEY LINE TO THE TOWER CENTER AT AS50(9/6) AND HOLDING THE RECORD OFFSET OF 0.1'LT FROM THE SURVEY LINE TO THE TOWER CENTER AT AS51(10/1). THE MEASURED DISTANCE IS 1.62 FEET SHORTER THAN RECORD. THE MEASURED DEFLECTION ANGLE AT STATION 515+50.00 IS 03°42'27"RT THAT DIFFERS FROM THE RECORD BY 00°01'03".

THE TANGENT BETWEEN STATIONS 530+99.81BK(531+00.00AH) AND 547+71.92 WAS RESOLVED BY HOLDING THE RECORD OFFSET OF 0.1'LT FROM THE SURVEY LINE TO THE TOWER CENTER AT AS51(10/1) AND HOLDING THE RECORD OFFSET OF 0.4'LT FROM THE SURVEY LINE TO THE TOWER CENTER AT AS53(10/3). THE MEASURED DISTANCE IS 0.14 FEET LONGER THAN RECORD. THE MEASURED DEFLECTION ANGLE AT STATION 530+99.81BK(531+00.00AH) IS 00°12'29"RT THAT DIFFERS FROM RECORD BY 00°00'16".

THE TANGENT BETWEEN STATIONS 547+71.92 AND 576+00.00 WAS RESOLVED BY HOLDING THE RECORD OFFSET OF 0.4'LT FROM THE SURVEY LINE TO THE TOWER CENTER AT AS53(10/3) AND HOLDING THE RECORD OFFSET OF 1.3'LT FROM THE SURVEY LINE TO THE TOWER CENTER AT AS56(10/6). THE MEASURED DISTANCE IS 0.25 FEET SHORTER THAN RECORD. THE MEASURED DEFLECTION ANGLE AT STATION 547+71.92 00°35'54"RT THAT DIFFERS FROM RECORD BY 00°00'06".

THE TOWER CENTER FOR AS57(11/1) WAS SURVEYED AND THE RECORD OFFSET OF 1.3'RT FROM THE SURVEY LINE TO THE TOWER CENTER WAS HELD FOR A CHECK OF THE DEFLECTION ANGLE. THE MEASURED DEFLECTION ANGLE AT STATION 576+00.00 IS 27°45'06"LT THAT DIFFERS FROM RECORD BY 00°00'14".

WIND RIVER ROAD

BPA CONVEYED RIGHT-OF-WAY RIGHTS TO SKAMANIA COUNTY FOR WIND RIVER ROAD (COUNTY ROAD NO. 2135) PER DOCUMENT RECORDED IN VOLUME 61 PAGE 307-8 ON OCTOBER 30, 1969. THE RIGHT-OF-WAY IS DESCRIBED AS BOUNDED ON THE WEST BY THE WEST LINE OF THE EAST ONE HALF OF THE NORTHEAST ONE QUARTER OF SECTION 29, TOWNSHIP 3 NORTH, RANGE 8 EAST, WILLAMETTE MERIDAN AND BOUNDED ON THE EAST BY THE EXISTING COUNTY ROAD. ROAD CENTERLINE MONUMENTS WERE FOUND AND HELD TO RESOLVE THE CENTERLINE PER THE WIND RIVER ROAD COUNTY ROAD 2135 PLAN. THIS ALIGNMENT WAS THEN USED TO CALCULATE THE ORIGINAL HIGHWAY 8-C CENTERLINE AND EASTERLY RIGHT-OF-WAY LINE.



Mackay Sposito

ENERGY PUBLIC WORKS LAND DEVELOPMENT

www.mackaysposito.com

1325 SE TECH CENTER DRIVE, SUITE 140
VANCOUVER, WA 98683
VANCOUVER: (360) 695-3411
PORTLAND: (503) 289-6726
FAX (360) 695-0833

CALC BY: SRF CHECKED BY: SRF DRAWN BY: AJS

SER NO 335973-C

FILE: 17026-R-2-0

JOB NO.: 17026

SHEET 2 OF 7

RECORD OF SURVEY
FOR THE BONNEVILLE POWER ADMINISTRATION
BONNEVILLE-COULEE LINE RIGHT-OF-WAY MILES 9 THRU 11
AND STEVENSON TAP TO BONNEVILLE-ALCOA No. 1 & 2
RIGHT-OF-WAY THRU MILE 9

SURVEY LINE RESOLUTION NOTES (CONTINUED)

STEVENSON TAP TO BONNEVILLE-ALCOA NO. 1 & 2

MOST OF THE TRANSMISSION LINE WITHIN THE PROJECT LIMITS HAS BEEN REMOVED. THERE IS ONE REMAINING TOWER AT STATION 511+77.0. THE REMAINING TRANSMISSION LINE EXTENDS SOUTHEASTERLY FROM THIS TOWER, WHICH IS BEYOND THE PROJECT AREA. BPA HAS REQUESTED THAT PART OF THE EASEMENT RIGHT-OF-WAY WITHIN THE PROJECT AREA FROM APPROXIMATE STATION 477+06.0 TO 512+22.0 BE RESOLVED. A SEARCH FOR MONUMENTS AT THE COMPUTED ANGLE POINTS AND ANY OTHER REMAINING EVIDENCE WAS PERFORMED. THE ONLY REMAINING EVIDENCE IS ABOVE SAID TOWER AND LINE.

A COMBINATION OF THE REMAINING PORTION OF THE TRANSMISSION LINE, RECORD EASEMENT DOCUMENTS, STATIONS, DISTANCES, DEFLECTION ANGLES, MILE MAPS AND THE RESOLVED SURVEY LINE FOR BONNEVILLE-COULEE TRANSMISSION LINE WERE UTILIZED AS THE BEST EVIDENCE TO RESOLVE AND LOCATE THE NORTHERLY RIGHT-OF-WAY LINE FOR THE STEVENSON TAP TO BONNEVILLE-ALCOA NO. 1 & 2 TRANSMISSION LINE.

B.P.A. MAPPING CADASTRAL TIES

NOTE: THE PURPOSE OF THE CADASTRAL TIES IS TO CONFIRM THE LOCATION OF THE RESOLVED SURVEY LINE.

W1/4 CORNER SECTION 29, T.3N., R.8E. MEASURED STATIONING AT THE WEST LINE OF SECTION 29 IS 481+88.76. RECORD IS 481+88.88 FOR A DIFFERENCE OF 0.12'. MEASURED DISTANCE FROM SURVEY LINE IS 1069.13'. RECORD IS 1070.27' FOR A DIFFERENCE OF 1.14'. BPA SET AN IRON PIPE FOR THIS CORNER. FOUND A 2" IRON PIPE AT CORNER AND THE POSITION COMPARES WELL WITH BPA RECORD.

N1/4 CORNER SECTION 29, T.3N., R.8E. MEASURED STATIONING AT THE NORTH-SOUTH CENTER OF SECTION LINE IS 508+03.40. RECORD IS 508+10.20 FOR A DIFFERENCE OF 6.8'. MEASURED DISTANCE FROM SURVEY LINE IS 1351.02'. RECORD IS 1350.86' FOR A DIFFERENCE OF 0.16'. BPA FOUND A U.S.E.D. MONUMENT. THE MONUMENT FOUND IS AN ARMY CORPS OF ENGINEERS CAP ALSO STAMPED "BONNEVILLE POWER NAVIG. PROJECT" AND APPEARS TO BE THE SAME MONUMENT SHOWN ON BPA MAPPING.

NE CORNER SECTION 29, T.3N., R.8E. MEASURED STATIONING AT THE EAST LINE OF SECTION 29 IS 534+86. RECORD IS 534+85.96 FOR A DIFFERENCE OF 0.38'. MEASURED DISTANCE FROM SURVEY LINE IS 1255.53'. RECORD IS 1254.81' FOR A DIFFERENCE OF 0.72'. BPA FOUND A STONE UNDER PIPE IN HIGHWAY. THE MONUMENT FOUND IS A SKAMAINA COUNTY 1-1/2" ALUMINUM CAP. THE RE-MONUMENTED POSITION OF THE CORNER COMPARES FAVORABLY WITH BPA MAPPING.

E1/4 CORNER SECTION 29, T.3N., R.8E. - MEASURED STATIONING AT THE EAST LINE OF SECTION 29 IS 534+86.34. RECORD IS 534+85.96 FOR A DIFFERENCE OF 0.38'. MEASURED DISTANCE FROM SURVEY LINE IS 1437.51'. RECORD IS 1437.80' FOR A DIFFERENCE OF 0.29'. BPA FOUND A U.S.E.D. MONUMENT. THE MONUMENT FOUND IS AN ARMY CORPS OF ENGINEERS CAP ALSO STAMPED "BONNEVILLE POWER NAVIG. PROJECT" AND APPEARS TO BE THE SAME MONUMENT SHOWN ON BPA MAPPING.

N1/4 CORNER SECTION 28, T.3N., R.8E., - MEASURED STATIONING AT THE NORTH-SOUTH CENTER OF SECTION LINE IS 561+67.52. RECORD IS 561+76.97 FOR A DIFFERENCE OF 9.45'. MEASURED DISTANCE FROM SURVEY LINE IS 1224.71'. RECORD IS 1225.39' FOR A DIFFERENCE OF 0.68'. BPA FOUND A U.S.E.D. MONUMENT. THE MONUMENT FOUND IS A SKAMANIA COUNTY 3" BRASS CAP. THE RE-MONUMENTED POSITION OF THE CORNER COMPARES FAVORABLY FOR DISTANCE FROM THE SURVEY LINE AS SHOWN ON BPA MAPPING.

E1/4 CORNER SECTION 28, T.3N., R.8E., - MEASURED STATIONING AT THE EAST LINE OF SECTION 28 IS 589+78.34. RECORD IS 590+23.46 FOR A DIFFERENCE OF 45.12'. MEASURED DISTANCE FROM SURVEY LINE IS 2094.79. RECORD IS 2116.38' FOR A DIFFERENCE OF 21.59'. BPA FOUND A U.S.E.D. MONUMENT. THE MONUMENT FOUND IS AN ARMY CORPS OF ENGINEERS CAP ALSO STAMPED "BONNEVILLE POWER NAVIG. PROJECT" AND APPEARS TO BE THE SAME MONUMENT SHOWN ON BPA MAPPING. THE CURRENT SURVEYED POSTION FOR THIS CORNER DOES NOT COMPARE WELL WITH BPA MAPPING.

BONNEVILLE-COULEE LINE

B.P.A. MAP SERIAL NO.	B.P.A. TRACT ID	RECORDING DATE	FEE NUMBER
1179-1180	BC-43	2/11/1941	TAKING - CIVIL NO. 34
1180	BC-44	10/21/1940	TAKING - CIVIL NO. 34
1180	BC-45ee	5/29/1940	TAKING - CIVIL NO. 34
1180	BC-46	10/29/1940	TAKING - CIVIL NO. 34
1180	BC-47	6/11/1940	TAKING - CIVIL NO. 34
1180	BC-48cc	5/29/1940	TAKING - CIVIL NO. 34
1180	BC-49	2/6/1940	TAKING - CIVIL NO. 34
1180	BC-50	9/11/1939	TAKING - CIVIL NO. 34
1180-1181	BC-51	11/22/1940	TAKING - CIVIL NO. 34
1180-1181	BC-52	12/27/1939	TAKING - CIVIL NO. 34
1180-1181	BC-53	12/2/1939	TAKING - CIVIL NO. 34
1180-1181	BC-54	2/6/1940	TAKING - CIVIL NO. 34
1180-1181	BC-2000	10/29/1940	TAKING - CIVIL NO. 34
1181	BC-55	12/2/1939	TAKING - CIVIL NO. 34
1181	BC-56	6/26/1940	TAKING - CIVIL NO. 34
1181	BC-57	3/27/1940	TAKING - CIVIL NO. 34
1181	BC-58dd	11/22/1939	TAKING - CIVIL NO. 34
1181	BC-59hh	4/18/1940	TAKING - CIVIL NO. 34
1181	BC-60dd	12/2/1939	TAKING - CIVIL NO. 34
1181-1182	BC-61hh	3/5/1940	TAKING - CIVIL NO. 34

**STEVENSON TAP TO
BONNEVILLE-ALCOA NO 1 & 2**

B.P.A. MAP SERIAL NO.	B.P.A. TRACT ID	RECORDING DATE	RECORDING NUMBER
125908-125909	ST-38/ST-39	3/13/1964	BOOK 52 PAGE 358
125909	ST-40	5/31/1963	BOOK 51 PAGE 329
125909	ST-41	6/27/1963	BOOK 51 PAGE 379
125909	ST-41A	6/27/1963	BOOK 51 PAGE 382

SURVEY REFERENCES

- | | |
|-------------------------------------|--------------------------------------|
| (1) B.P.A. PLAT MAP SERIAL NO. 2994 | (11) BK3 PG369 OF SHORT PLATS |
| (2) BK1 PG61 | (12) BK3 PG259 OF SHORT PLATS |
| (3) BK3 PG142 | (13) A.F.N. 2004154874 |
| (4) BKB PG90 OF PLATS | (14) B.P.A. PLAT MAP SERIAL NO. 2995 |
| (5) AFN 2017001432 | (15) BK3 PG196 OF SHORT PLATS |
| (6) AFN 2017001403 | (16) BK1 PG60 |
| (7) BK3 PG254 OF SHORT PLATS | (17) LCR AFN 10117 |
| (8) A.F.N. 2015002316 | (18) LCR AFN 78337 |
| (9) BK3 PG377 OF SHORT PLATS | (19) BK 3 PG 205 |
| (10) A.F.N. 2006164193 | |

B.P.A. PLAT MAP SERIAL NUMBERS
2994, 2995

B.P.A. MILE MAP SERIAL NUMBERS
1180, 1181, 1182, 125909



MacKay Sposito

ENERGY PUBLIC WORKS LAND DEVELOPMENT
www.mackaysposito.com

1325 SE TECH CENTER DRIVE, SUITE 140
VANCOUVER, WA 98683
VANCOUVER: (360) 695-3411
PORTLAND: (503) 289-6726
FAX (360) 695-0833

CALC BY: SRF CHECKED BY: SRF DRAWN BY: AJS

JOB NO.: 17026

SER NO 335973-C

FILE: 17026-R-3-0

SHEET 3 OF 7

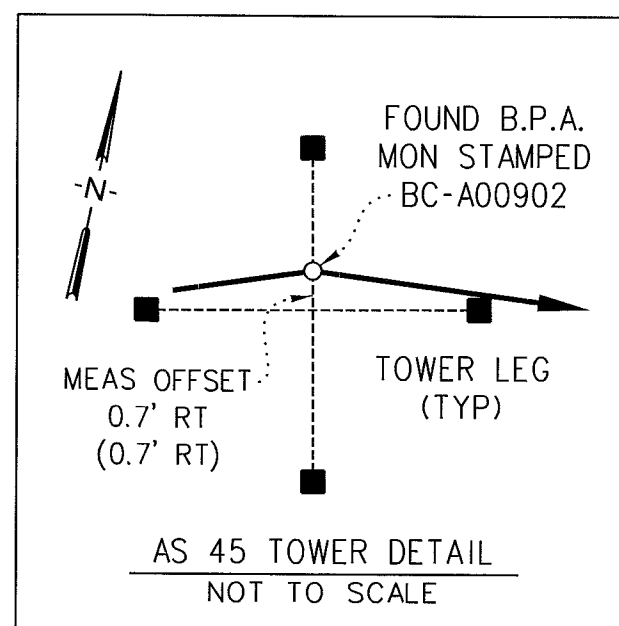
RECORD OF SURVEY

FOR THE BONNEVILLE POWER ADMINISTRATION BONNEVILLE-COULEE LINE RIGHT-OF-WAY MILES 9 THRU 11 AND STEVENSON TAP TO BONNEVILLE-ALCOA No. 1 & 2 RIGHT-OF-WAY THRU MILE 9

IN THE SOUTHEAST 1/4 OF THE NORTHEAST 1/4 AND THE NORTHEAST 1/4 OF THE NORTHEAST 1/4 OF SECTION 30, THE SOUTHWEST 1/4 OF THE NORTHWEST 1/4, THE NORTHWEST 1/4 OF THE NORTHWEST 1/4, THE SOUTHEAST 1/4 OF THE NORTHWEST 1/4, AND THE NORTHEAST 1/4 OF THE NORTHWEST 1/4 OF SECTION 29, ALL IN T3N, R8E, W.M.: SKAMANIA COUNTY, WASHINGTON

SURVEY LINE MONUMENT TABLE

POINT ID	GRID NORTHING	GRID EASTING	MONUMENT DESCRIPTION	STATION	OFFSET
BC-A00902	144423.66	1298882.67	3-1/4" B.P.A. AC W/PUNCH "BC-A00902 LS38973 MSI 18"	478+56.88	0.00
BC-P00903	144451.37	1299250.32	3-1/4" B.P.A. AC W/PUNCH "BC-P00903 LS38973 MSI 18"	482+25.6	0.00
BC-P00904	144481.39	1299647.66	3-1/4" B.P.A. AC W/PUNCH "BC-P00904 LS38973 MSI 18"	486+24.1	0.00
BC-P00905	144500.18	1299896.05	3-1/4" B.P.A. AC W/PUNCH "BC-P00905 LS38973 MSI 18"	488+73.2	0.00
BC-P00906	144543.17	1300464.52	3-1/4" B.P.A. AC W/PUNCH "BC-P00906 LS38973 MSI 18"	494+43.2	0.00
BC-P00907	144573.06	1300859.75	3-1/4" B.P.A. AC W/PUNCH "BC-P00907 LS38973 MSI 18"	498+39.6	0.00



LEGEND

- Ah STATION AHEAD
- Bk STATION BACK
- L.C.R. LAND CORNER RECORD
- B.P.A. BONNEVILLE POWER ADMINISTRATION
- U.S.D.O.E. UNITED STATES DEPARTMENT OF ENERGY
- A.F.N. AUDITOR'S FILE NUMBER
- AS XX B.P.A. TOWER SERIAL NUMBER
- X/X B.P.A. OPERATING TOWER NUMBERS

XXX·XX (XX) TRANSMISSION LINE MILE MARKER WITH STATION PER B.P.A. MILE MAPS

- △ CONTROL MONUMENT AS NOTED
- FOUND MONUMENT AS NOTED
- SET 3-1/4" ALUMINUM CAP ON 5/8" IRON ROD.
- ◇ FOUND MONUMENT AT TOWER
- ◇ B.P.A. ROTATED STEEL TOWER

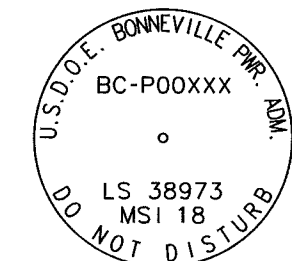
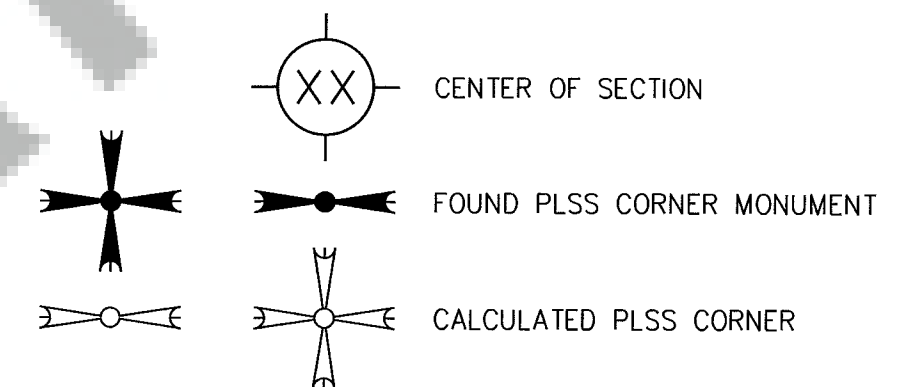
- ACQUISITION SURVEY LINE
- - - B.P.A. TRANSMISSION LINE RIGHT-OF-WAY (FEE)
- - - B.P.A. TRANSMISSION LINE RIGHT-OF-WAY (EASEMENT)
- SECTION LINE
- QUARTER SECTION LINE
- SIXTEENTH SECTION LINE
- PARCEL DATA PER SKAMANIA COUNTY GEOGRAPHIC INFORMATION SYSTEM (G.I.S.)

SURVEY REFERENCES

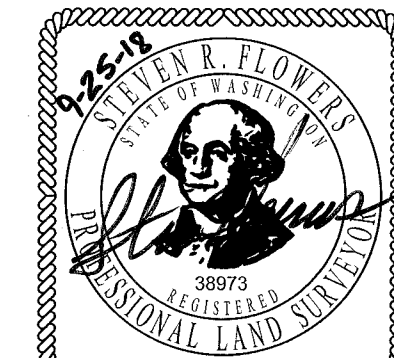
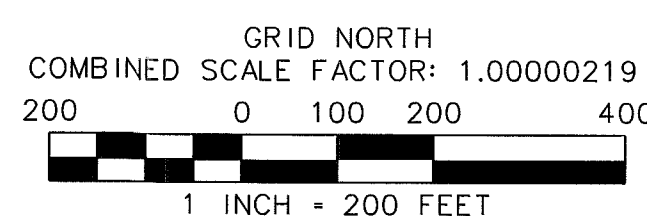
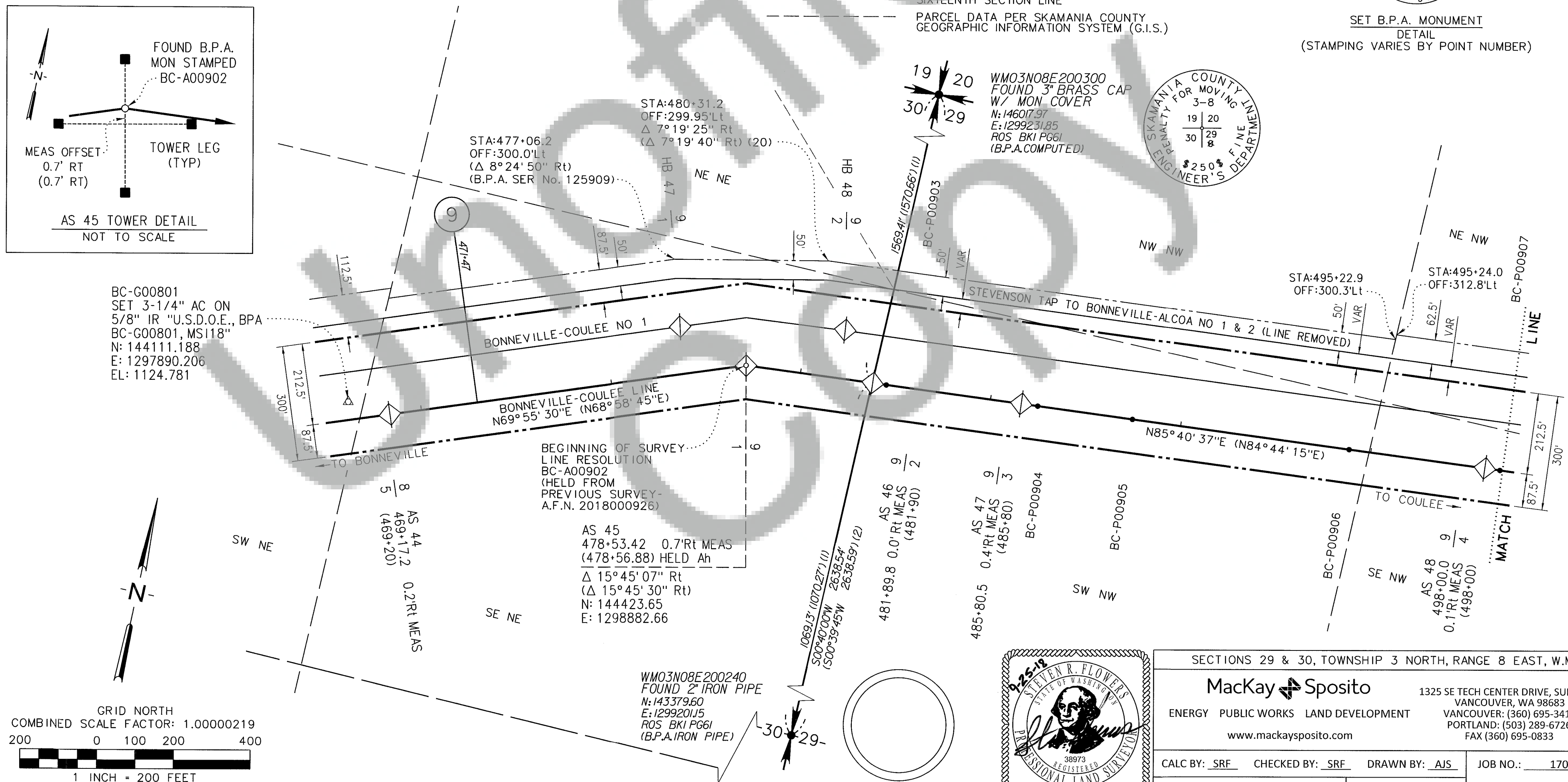
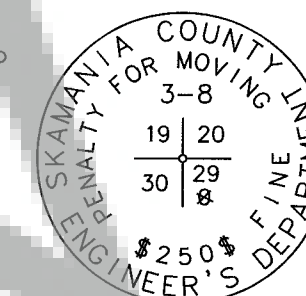
- REFERENCE B.P.A. PLAT MAP 2994
- REFERENCE B.P.A. MILE MAP 1180
- (1) B.P.A. PLAT MAP SERIAL NO. 2994
- (2) BK1 PG61

BASIS OF BEARINGS

BEARINGS AND COORDINATES SHOWN ARE GRID, BASED ON THE WASHINGTON STATE PLANE COORDINATE SYSTEM, SOUTH ZONE (4602), NAD83(2011)(EPOCH:2010.0), US SURVEY FOOT. DISTANCES SHOWN HEREON ARE GROUND DISTANCES, TO CONVERT DISTANCES SHOWN TO GRID, MULTIPLY BY 1.00000219



SET B.P.A. MONUMENT
DETAIL
(STAMPING VARIES BY POINT NUMBER)



SECTIONS 29 & 30, TOWNSHIP 3 NORTH, RANGE 8 EAST, W.M.

MacKay Sposito
ENERGY PUBLIC WORKS LAND DEVELOPMENT
www.mackaysposito.com

1325 SE TECH CENTER DRIVE, SUITE 140
VANCOUVER, WA 98683
VANCOUVER: (360) 695-3411
PORTLAND: (503) 289-6726
FAX (360) 695-0833

CALC BY: SRF CHECKED BY: SRF DRAWN BY: AJS JOB NO.: 17026

SER NO 335973-C FILE: 17026-R-4-0 SHEET 4 OF 7

RECORD OF SURVEY

FOR THE BONNEVILLE POWER ADMINISTRATION BONNEVILLE-COULEE LINE RIGHT-OF-WAY MILES 9 THRU 11 AND STEVENSON TAP TO BONNEVILLE-ALCOA No. 1 & 2 RIGHT-OF-WAY THRU MILE 9

IN THE SOUTHEAST 1/4 OF THE NORTHEAST 1/4, AND THE NORTHEAST 1/4 OF THE NORTHEAST 1/4 OF SECTION 29, THE NORTHWEST 1/4 OF THE NORTHEAST 1/4, THE NORTHEAST 1/4 OF THE NORTHWEST 1/4, THE NORTHWEST 1/4 OF THE NORTHEAST 1/4, SECTION 28, ALL IN T3N, R8E, W.M.: SKAMANIA COUNTY, WASHINGTON

SURVEY LINE MONUMENT TABLE

POINT ID	GRID NORTHING	GRID EASTING	MONUMENT DESCRIPTION	STATION	OFFSET
BC-P01002	144720.43	1304371.63	3-1/4" B.P.A. AC W/PUNCH "BC-P01002 LS38973 MSI 18"	533+59.4	0.00
BC-P01003	144724.53	1304945.29	3-1/4" B.P.A. AC W/PUNCH "BC-P01003 LS38973 MSI 18"	539+33.1	0.00
BC-A01004	144730.47	1305784.23	3-1/4" B.P.A. AC W/PUNCH "BC-A01004 LS38973 MSI 18"	547+71.92	0.00
BC-P01005	144729.13	1306202.31	3-1/4" B.P.A. AC W/PUNCH "BC-P01005 LS38973 MSI 18"	551+90.0	0.00
BC-P01006	144727.59	1306664.23	3-1/4" B.P.A. AC W/PUNCH "BC-P01006 LS38973 MSI 18"	556+51.9	0.00
BC-P01007	144725.95	1307159.86	3-1/4" B.P.A. AC W/PUNCH "BC-P01007 LS38973 MSI 18"	561+47.6	0.00

LEGEND

- Ah STATION AHEAD
- Bk STATION BACK
- L.C.R. LAND CORNER RECORD
- B.P.A. BONNEVILLE POWER ADMINISTRATION
- U.S.D.O.E. UNITED STATES DEPARTMENT OF ENERGY
- A.F.N. AUDITOR'S FILE NUMBER
- AS XX B.P.A. TOWER SERIAL NUMBER
- X/X B.P.A. OPERATING TOWER NUMBERS

SURVEY REFERENCES

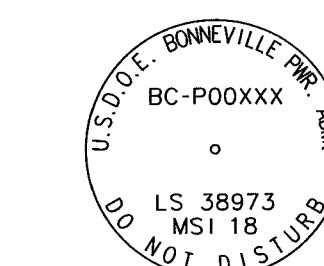
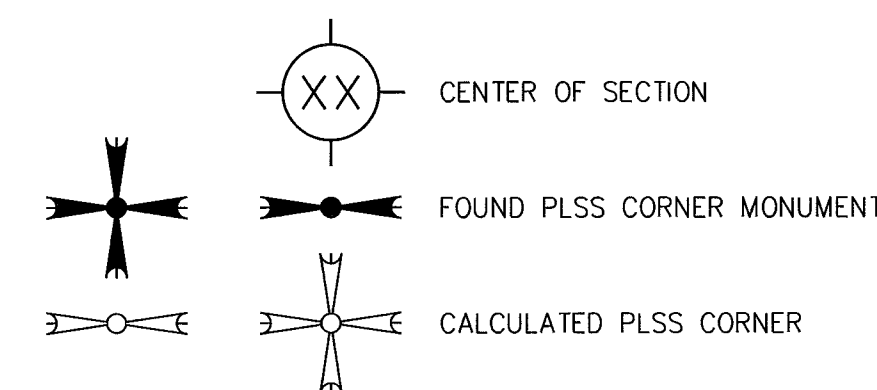
- REFERENCE B.P.A. PLAT MAP 2994
- REFERENCE B.P.A. MILE MAP 1181
- (1) B.P.A. PLAT MAP SERIAL NO. 2994
- (2) BK1 PG61
- (7) BK3 PG254 OF SHORT PLATS
- (8) A.F.N. 2015002316
- (9) BK3 PG377 OF SHORT PLATS
- (10) A.F.N. 2006164193
- (11) BK3 PG369 OF SHORT PLATS
- (12) BK3 PG259 OF SHORT PLATS
- (13) A.F.N. 2004154874
- (14) B.P.A. PLAT MAP SERIAL NO. 2995
- (15) BK3 PG196 OF SHORT PLATS

BASIS OF BEARINGS

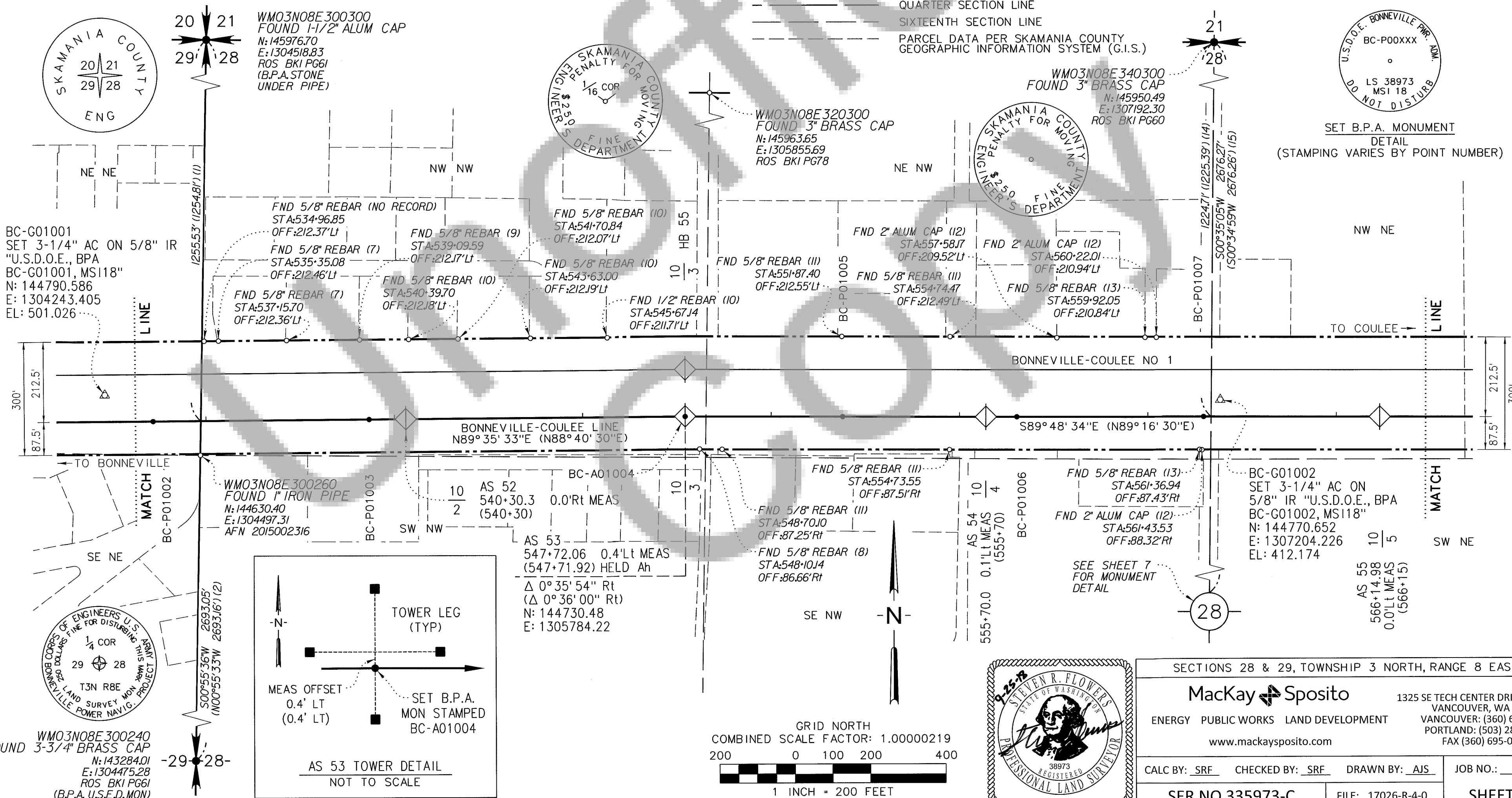
BEARINGS AND COORDINATES SHOWN ARE GRID, BASED ON THE WASHINGTON STATE PLANE COORDINATE SYSTEM, SOUTH ZONE (4602), NAD83(2011)(EPOCH:2010.0), US SURVEY FOOT. DISTANCES SHOWN HEREON ARE GROUND DISTANCES, TO CONVERT DISTANCES SHOWN TO GRID, MULTIPLY BY 1.00000219

XXX*XX TRANSMISSION LINE MILE MARKER WITH STATION PER B.P.A. MILE MAPS

- △ CONTROL MONUMENT AS NOTED
- FOUND MONUMENT AS NOTED
- SET 3-1/4" ALUMINUM CAP ON 5/8" IRON ROD.
- ◇ FOUND MONUMENT AT TOWER
- ◇ B.P.A. ROTATED STEEL TOWER
- ACQUISITION SURVEY LINE
- - - B.P.A. TRANSMISSION LINE RIGHT-OF-WAY (FEE)
- - - B.P.A. TRANSMISSION LINE RIGHT-OF-WAY (EASEMENT)
- SECTION LINE
- QUARTER SECTION LINE
- SIXTEENTH SECTION LINE
- PARCEL DATA PER SKAMANIA COUNTY GEOGRAPHIC INFORMATION SYSTEM (G.I.S.)



SET B.P.A. MONUMENT
DETAIL
(STAMPING VARIES BY POINT NUMBER)



SECTIONS 28 & 29, TOWNSHIP 3 NORTH, RANGE 8 EAST, W.M.

MacKay & Spósito

ENERGY PUBLIC WORKS LAND DEVELOPMENT
www.mackaysposito.com

1325 SE TECH CENTER DRIVE, SUITE 140
VANCOUVER, WA 98683
VANCOUVER: (360) 695-3411
PORTLAND: (503) 289-6726
FAX (360) 695-0833

CALC BY: SRF CHECKED BY: SRF DRAWN BY: AJS JOB NO.: 17026

SER NO 335973-C FILE: 17026-R-4-0 SHEET 6 OF 7

RECORD OF SURVEY

FOR THE BONNEVILLE POWER ADMINISTRATION BONNEVILLE-COULEE LINE RIGHT-OF-WAY MILES 9 THRU 11 AND STEVENSON TAP TO BONNEVILLE-ALCOA No. 1 & 2 RIGHT-OF-WAY THRU MILE 9

IN THE NORTHWEST 1/4 OF THE NORTHEAST 1/4, AND GOVERNMENT LOT 6
OF SECTION 28, T3N, R8E, W.M.: SKAMANIA COUNTY, WASHINGTON

SURVEY LINE MONUMENT TABLE

POINT ID	GRID NORTHING	GRID EASTING	MONUMENT DESCRIPTION	STATION	OFFSET
BC-P01008	144723.64	1307852.80	3-1/4" B.P.A. AC W/PUNCH "BC-P01008 LS38973 MSI 18"	568+40.5	0.00
BC-P01009	144722.09	1308312.35	3-1/4" B.P.A. AC W/PUNCH "BC-P01009 LS38973 MSI 18"	573+00.1	0.00
BC-A01010	144721.09	1308612.04	3-1/4" B.P.A. AC W/PUNCH "BC-A01010 LS38973 MSI 18"	576+00.00	0.00

LEGEND

Ah	STATION AHEAD
Bk	STATION BACK
EQ	EQUATION STATION
L.C.R.	LAND CORNER RECORD
B.P.A.	BONNEVILLE POWER ADMINISTRATION
U.S.D.O.E.	UNITED STATES DEPARTMENT OF ENERGY
A.F.N.	AUDITOR'S FILE NUMBER
AS XX	B.P.A. TOWER SERIAL NUMBER
X	B.P.A. OPERATING TOWER NUMBERS

SURVEY REFERENCES

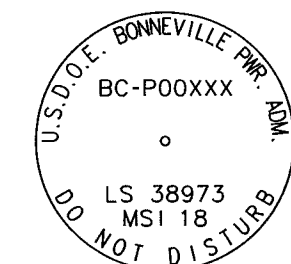
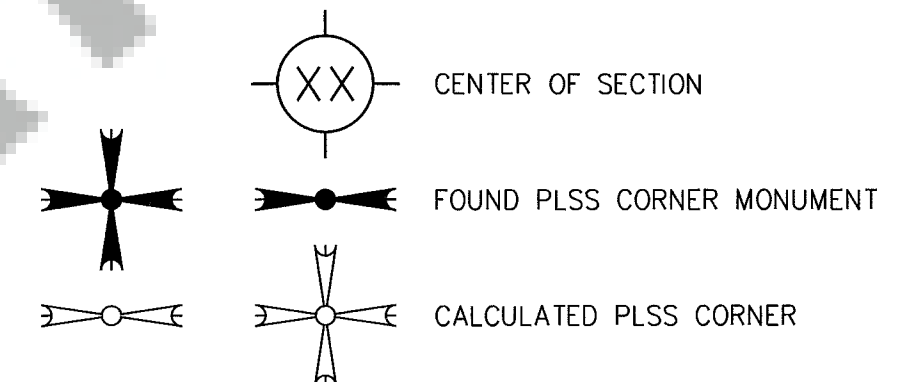
REFERENCE B.P.A. PLAT MAP 2995
REFERENCE B.P.A. MILE MAP 1181 AND 1182
(14) B.P.A. PLAT MAP SERIAL NO. 2995
(15) BK3 PG196 OF SHORT PLATS
(16) BK1 PG60

BASIS OF BEARINGS

BEARINGS AND COORDINATES SHOWN ARE GRID, BASED ON THE WASHINGTON STATE PLANE COORDINATE SYSTEM, SOUTH ZONE (4602), NAD83(2011) EPOCH:2010.0, US SURVEY FOOT. DISTANCES SHOWN HEREON ARE GROUND DISTANCES, TO CONVERT DISTANCES SHOWN TO GRID, MULTIPLY BY 1.00000219

XXX-XX (X) TRANSMISSION LINE MILE MARKER WITH STATION PER B.P.A. MILE MAPS

- △ CONTROL MONUMENT AS NOTED
- FOUND MONUMENT AS NOTED
- SET 3-1/4" ALUMINUM CAP ON 5/8" IRON ROD.
- ◇ FOUND MONUMENT AT TOWER
- ◇ B.P.A. ROTATED STEEL TOWER
- ACQUISITION SURVEY LINE
- - - B.P.A. TRANSMISSION LINE RIGHT-OF-WAY (FEE)
- - - B.P.A. TRANSMISSION LINE RIGHT-OF-WAY (EASEMENT)
- - - SECTION LINE
- - - QUARTER SECTION LINE
- - - SIXTEENTH SECTION LINE
- - - PARCEL DATA PER SKAMANIA COUNTY GEOGRAPHIC INFORMATION SYSTEM (G.I.S.)



SET B.P.A. MONUMENT
DETAIL
(STAMPING VARIES BY POINT NUMBER)

