

NARRATIVE

THE PURPOSE OF THIS SURVEY WAS TO POST THE NORTH AND EAST LINE OF THE NORTHWEST QUARTER FOR THE "POPE RESOURCES TRACT" CITED FOR LOGGING PURPOSES AT THE REQUEST OF OLYMPIC RESOURCE MANAGEMENT. CONTROLLING CORNERS SHOWN FOR SECTION 23 WERE TIED WITH EITHER "RTK GPS PROCEDURES" OR CONVENTIONAL TRAVERSE METHODS ORIGINATING FROM NEARBY "RTK GPS POINTS". THE GPS POINTS WERE COLLECTED ON "WASHINGTON STATE PLANE COORDINATE SYSTEM, SOUTH ZONE" (NAD 83/2011) WHICH WAS THE BASIS OF BEARING FOR THIS SURVEY. NO NEW MONUMENTS WERE ESTABLISHED DURING THIS SURVEY WITH THE EXCEPTION OF REMONUMENTING THE NORTHEAST CORNER OF SECTION 23. DISTANCES SHOWN ARE GRID DISTANCES, TO OBTAIN GROUND DISTANCES DIVIDE DISTANCES SHOWN BY THE COMBINED SCALE FACTOR OF 0.99989637.

SURVEY REFERENCE

- 1) ROS 2-76
2) ROS AFN 2005155913

DEED REFERENCE

STATUTORY WARRANTY DEED
BOUNDARY LINE ADJUSTMENT
POPE RESOURCES
TO
POPE RESOURCES
AFN 2015001132
(6/11/2015)

RECORD OF SURVEY

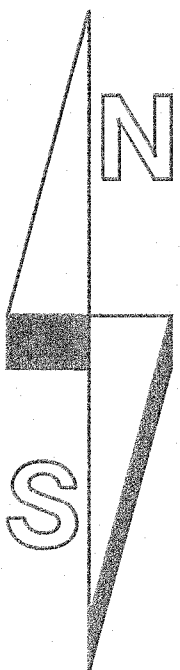
IN THE NW 1/4, NE 1/4 AND
SE 1/4 OF THE NW 1/4 OF
SECTION 23, T7N, R6E, W.M.
SKAMANIA COUNTY, WA.

FOUND AND UTILIZED CARSONITE
POST AS SET IN ROS 2-76 ALONG
THIS LINE

NATIONAL FOREST SYSTEM LANDS

FOUND AND HELD BLM 3" BRASS CAP
AS SHOWN IN ROS 2-76
(SEE LCR BOOK 7/6, PAGE 53)
EXISTING REFERENCES:
17" YEW, S55°E, 14.4' TO NAIL IN SIDE
CENTER WITH UNHEALED BLAZE WITH
VISIBLE SCRIBING AND BT TAG
19" CEDAR, N52°E, 213.9' TO BRASS
WASHER IN LOWER HEALED BLAZE (DID
NOT UNCOVER) WITH BT TAG
METAL "T" POST BEARS EAST, 3.0'
CARSONITE POST BEARS WEST, 3.0'
NEW REFERENCES:
17" FIR, N19°E, 7.20'

FOUND 4" X 4" CONCRETE MONUMENT
WITH BLM 2-1/2" BRASS CAP AS SHOWN IN ROS
AFN 2005155913 LEANING SIDEWAYS WITH THE CAP
BROKEN OFF AND LAYING ON THE GROUND. SET 5/8"
REBAR WITH 2" ALUMINUM CAP STAMPED AS SHOWN
FROM EXISTING REFERENCES, LAID EXISTING MONUMENT
ALONG SIDE THE NEW MONUMENT ON THE GROUND
(SEE LCR BOOK 7/6, PAGE 52)
EXISTING REFERENCES:
24" DEAD HEMLOCK, N19°E, 109.0' TO RAILROAD SPIKE
IN SIDE CENTER WITH HEALED BLAZE AND BT TAG
16" HEMLOCK SNAG, S38°W, 36.96' TO RAILROAD SPIKE
IN SIDE CENTER WITH HEALED BLAZE AND BT TAG
26" CEDAR, S71°W, 34.98' TO RAILROAD SPIKE IN SIDE
CENTER WITH HEALED BLAZE AND BT TAG
23" HEMLOCK, N88°W, 65.01' TO RAILROAD SPIKE IN
SIDE CENTER WITH HEALED BLAZE AND BT TAG
37" HEMLOCK SNAG, N67°W, 27.72' TO RAILROAD SPIKE
IN SIDE CENTER WITH HEALED BLAZE AND BT TAG
RAILROAD SPIKE IN PAVEMENT (JUSFS ROAD 90),
S45°E, 30.0'
CARSONITE POST BEARS NORTH, 2.3'
NEW REFERENCE:
METAL "T" POST BEARS WEST, 1.0'



BEARINGS ARE
NAD 83/2011 BASED ON
GPS OBSERVATIONS
(SEE NARRATIVE)

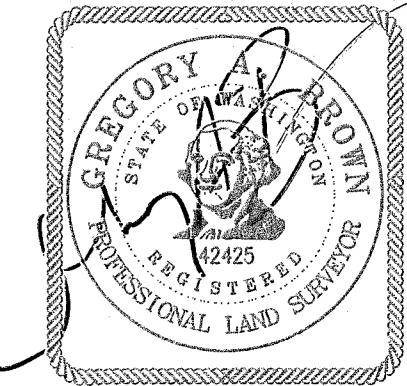
500 250 0 500 750 1000
SCALE 1 INCH = 500 FEET

LEGEND:

- INDICATES MONUMENT FOUND AS NOTED
⊗ INDICATES FOUND AND HELD 5/8" x 30" REBAR WITH
ORANGE PLASTIC CAP STAMPED "WHITTEN 12412" AS
SHOWN IN ROS AFN 2005155913
(UNLESS NOTED OTHERWISE)
() INDICATES RECORD INFORMATION PER SURVEY
REFERENCE NUMBER

INDICATES LINE MARKED WITH 1/2" x 60" FIBER
GLASS RODS WITH RED AND WHITE RIBBON.
TREES ALONG LINE BLAZED AND PAINTED WITH BLUE PAINT.
LINE TREES WERE MARKED WITH 3 NOTCHES ON EACH SIDE
WITH NO PAINT.

- ROS RECORD OF SURVEY
SP SHORT PLAT
AFN AUDITOR'S FILE NUMBER
BLM BUREAU OF LAND MANAGEMENT
LCR LAND CORNER RECORD
GPS GLOBAL POSITIONING SYSTEM
RTK REAL TIME KINETIC
BT BEARING TREE



LINE	DISTANCE
L1	286.23' (286.00') ²
L2	379.90' (380.18') ²
L3	333.10' (333.09') ²
L4	333.05' (333.09') ²
L5	333.08' (333.09') ²
L6	333.02' (333.09') ²
L7	332.99' (333.09') ²
L8	332.95' (333.09') ²

FOUND AND HELD 5/8" REBAR
WITH ORANGE PLASTIC CAP
STAMPED "WHITTEN 12412" AS
SHOWN IN ROS AFN 2005155913
EXISTING REFERENCES:
METAL "T" POST WITH PVC PIPE
BEARS EAST, 0.4'
NEW REFERENCES:
9" FIR, N64°E, 15.55'
7" FIR, S47°W, 14.98'

FOUND AND HELD 5/8" REBAR
WITH ORANGE PLASTIC CAP
STAMPED "WHITTEN 12412" AS
SHOWN IN ROS AFN 2005155913
EXISTING REFERENCES:
METAL "T" POST BEARS SOUTH, 0.3'
NEW REFERENCES:
11" FIR, S23°E, 8.04'
20" HEMLOCK, S45°W, 13.62'

FOUND AND HELD 4" X 4" CONCRETE
MONUMENT WITH BLM 2-1/2" BRASS CAP AS
SHOWN IN ROS AFN 2005155913
(SEE LCR ON FILE WITH THE DEPARTMENT OF
NATURAL RESOURCES)
EXISTING REFERENCES:
27" FIR, S58°W, 19.45' TO RAILROAD SPIKE IN
SIDE CENTER WITH HEALED BLAZE AND BT TAG
20" FIR, S72°W, 28.50' TO RAILROAD SPIKE IN
SIDE CENTER WITH HEALED BLAZE AND BT TAG
METAL "T" POST BEARS SOUTH, 3.0'

REFERENCE TREE NOTE

NEW REFERENCE TREES WERE MEASURED TO A 6" NAIL SET IN SIDE
CENTER OF TREE, ALSO PLACED A BEARING TREE SIGN AND 4
NOTCHES FACING TOWARD THE CORNER. BEARINGS NOTED WERE TAKEN
WITH A HAND HELD COMPASS WITH A DECLINATION SET TO 16° EAST.

AUDITOR'S CERTIFICATE

FILED FOR RECORD THIS 16th DAY OF July 2018 AT
12:36 P.M. IN BOOK — OF SURVEYS AT PAGE —
AT THE REQUEST OF BROWN SURVEYING, PLLC.

2018001464
AUDITOR'S FILE NUMBER

Robert J. Waymire
DEPUTY COUNTY AUDITOR

BROWN SURVEYING, PLLC MAKES NO WARRANTIES AS TO MATTERS OF UNWRITTEN
TITLE SUCH AS ADVERSE POSSESSION, ACQUIESCENCE, ESTOPPLE, ETC.

A FIELD TRAVERSE WAS PERFORMED USING A NIKON NIVO 3.0C THREE SECOND
TOTAL STATION WITH TDS DATA COLLECTION SYSTEM. THE FIELD TRAVERSE MET THE
MINIMUM STANDARDS FOR SURVEYS AS DESIGNATED IN WAC 332-130-090. ALL
CORNERS NOTED AS FOUND WERE VISITED ON 5/30, 6/1 AND 6/4/2018.

SURVEYOR'S CERTIFICATE

THIS MAP CORRECTLY REPRESENTS A SURVEY MADE BY ME OR UNDER MY DIRECTION
IN CONFORMANCE WITH THE REQUIREMENTS OF THE SURVEY RECORDING ACT AT THE
REQUEST OF OLYMPIC RESOURCE MANAGEMENT IN — JUNE —, 2018.

Gregory A. Brown 7-9-2018
GREGORY A. BROWN, PROFESSIONAL LAND SURVEYOR, LS# 42425

SCALE: 1"=500'
JOB NO. 18-029
DATE: 7-5-2018
CALC BY: GAB
DRAWN BY: GAB
CHECKED BY: EVB
SHEET 1 OF 1

BROWN
SURVEYING PLLC
PO BOX 414
AMBOY, WA 98601
360-600-0846
ebrownsurveying@gmail.com