

# RECORD OF SURVEY

FOR THE BONNEVILLE POWER ADMINISTRATION  
BONNEVILLE-COULEE LINE RIGHT-OF-WAY MILES 6 THRU 9  
AND STEVENSON TAP TO BONNEVILLE-ALCOA No. 1 & 2  
RIGHT-OF-WAY MILES 7 THRU 9

AUDITOR'S CERTIFICATE  
FILED FOR RECORD THIS 8th DAY OF May, 2018  
AT 11:43 A.M. IN BOOK OF SURVEYS AT PAGE  
AT THE REQUEST OF MACKAY SPOSITO. AFN# 2018000926  
County Auditor Deputy

## TABLE OF CONTENTS

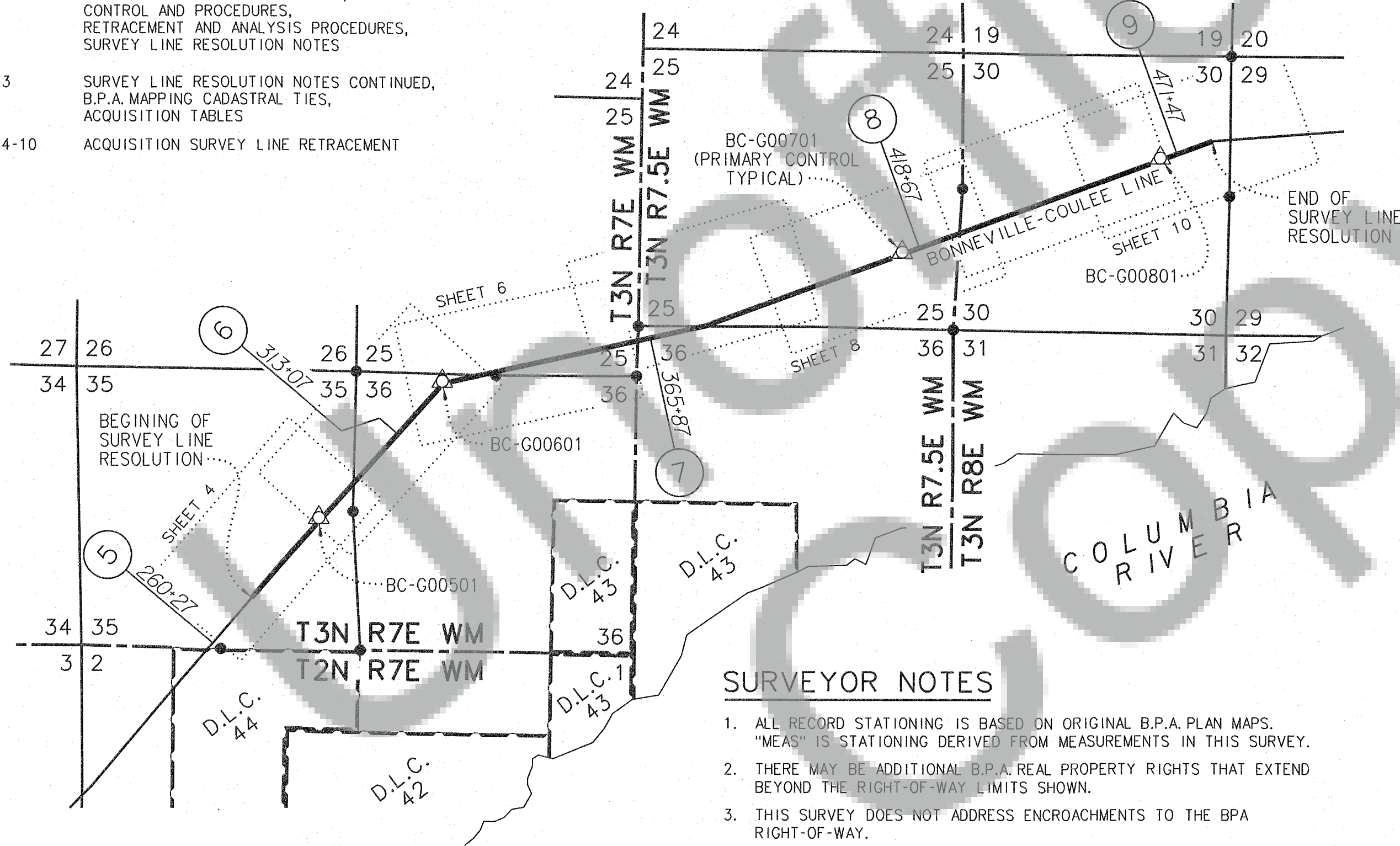
SHEET 1	VICINITY MAP, PROJECT LOCATION, SHEET INDEX, AUDITOR'S CERTIFICATE, BASIS OF BEARINGS, PURPOSE OF SURVEY, SURVEYOR NOTES, SURVEYOR'S CERTIFICATE
SHEET 2	HISTORY OF RIGHT-OF-WAY ACQUISITION, ANALYSIS OF RECORD DOCUMENTS, CONTROL AND PROCEDURES, RETRACEMENT AND ANALYSIS PROCEDURES, SURVEY LINE RESOLUTION NOTES
SHEET 3	SURVEY LINE RESOLUTION NOTES CONTINUED, B.P.A. MAPPING CADASTRAL TIES, ACQUISITION TABLES
SHEET 4-10	ACQUISITION SURVEY LINE RETRACEMENT

## PROJECT LOCATION

IN THE SOUTHWEST 1/4 OF THE SOUTHEAST 1/4, THE NORTHWEST 1/4 OF THE SOUTHEAST 1/4, THE NORTHEAST 1/4 OF THE SOUTHEAST 1/4, AND THE SOUTHEAST 1/4 OF THE NORTHEAST 1/4 OF SECTION 35, THE SOUTHWEST 1/4 OF THE NORTHWEST 1/4, THE NORTHWEST 1/4 OF THE NORTHWEST 1/4, THE NORTHEAST 1/4 OF THE NORTHWEST 1/4, AND THE NORTHWEST 1/4 OF THE NORTHEAST 1/4 OF SECTION 36, THE SOUTHEAST 1/4 OF THE SOUTHWEST 1/4, THE SOUTHWEST 1/4 OF THE SOUTHEAST 1/4, AND THE SOUTHEAST 1/4 OF THE SOUTHEAST 1/4 OF SECTION 25, ALL IN T3N, R7E, W.M.

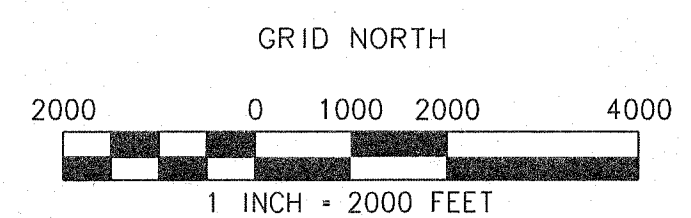
IN GOVERNMENT LOT 3 AND GOVERNMENT LOT 2 OF SECTION 36, GOVERNMENT LOT 10, GOVERNMENT LOT 11, GOVERNMENT LOT 12, THE SOUTHWEST 1/4 OF THE SOUTHEAST 1/4, THE NORTHWEST 1/4 OF THE SOUTHEAST 1/4, THE SOUTHEAST 1/4 OF THE SOUTHEAST 1/4, AND THE NORTHEAST 1/4 OF THE SOUTHEAST 1/4 OF SECTION 25, ALL IN T3N, R7-1/2E, W.M.

IN GOVERNMENT LOT 3, THE NORTHEAST 1/4 OF THE SOUTHWEST 1/4, THE SOUTHEAST 1/4 OF THE NORTHWEST 1/4, THE SOUTHWEST 1/4 OF THE NORTHEAST 1/4, THE SOUTHEAST 1/4 OF THE NORTHEAST 1/4, AND THE NORTHEAST 1/4 OF THE NORTHEAST 1/4 OF SECTION 30, ALL IN T3N, R8E, W.M.; SKAMANIA COUNTY, WASHINGTON



## LEGEND

- XXX·XX (X) BONNEVILLE-COULEE LINE MILE MARKER STATION PER B.P.A. MILE MAPS
- ACQUISITION SURVEY LINE
- TOWNSHIP AND RANGE LINE
- SECTION LINE
- DONATION LAND CLAIM - SINGLE
- DONATION LAND CLAIM - DOUBLE
- SHEET LAYOUT
- B.P.A. BONNEVILLE POWER ADMINISTRATION
- D.L.C. DONATION LAND CLAIM
- FOUND CADASTRAL CORNER
- △ CONTROL MONUMENT AS NOTED



## PURPOSE OF SURVEY

THE BONNEVILLE POWER ADMINISTRATION (B.P.A.), PART OF THE U.S. DEPARTMENT OF ENERGY HAS REQUESTED MACKAY SPOSITO INC. TO PROVIDE A RETRACEMENT SURVEY OF A PORTION OF B.P.A.'S BONNEVILLE-COULEE LINE AND STEVENSON TAP TO BONNEVILLE-ALCOA NO. 1 & 2 TRANSMISSION LINE RIGHT-OF-WAY CORRIDOR IN SKAMANIA COUNTY, WASHINGTON. THE REQUEST WAS TO DELINEATE THE SURVEY LINE AND THE NORTHERLY AND SOUTHERLY LIMITS OF B.P.A.'S RIGHT-OF-WAY WITHIN THE PROJECT AREA.

THE PROJECT IS WITHIN THE BONNEVILLE-COULEE LINE MILES 6 THROUGH 9 BETWEEN TOWER AS25 (STATION 271+56.0 IN SECTION 35, T. 3 N., R. 7 E., W.M.) AND TOWER AS45 (STATION 478+56.88 IN SECTION 30, T. 3 N., R. 8 E., W.M.). ALSO WITHIN THE STEVENSON TAP TO BONNEVILLE-ALCOA NO. 1 & 2 LINE'S MILES 7 THROUGH 9 BETWEEN STATION 345+52 IN SECTION 25, T. 3 N., R. 7 E., W.M. AND STATION 478+56.88 IN SECTION 30, T. 3 N., R. 8 E., W.M.

## BASIS OF BEARINGS

BEARINGS AND COORDINATES SHOWN ARE GRID, BASED ON THE WASHINGTON STATE PLANE COORDINATE SYSTEM, SOUTH ZONE (4602), NAD83(2011)(EPOCH:2010.0), US SURVEY FOOT. DISTANCES SHOWN HEREON ARE GROUND DISTANCES, TO CONVERT DISTANCES SHOWN TO GRID, MULTIPLY BY 1.000005025.

MACKAY SPOSITO MAKES NO WARRANTIES AS TO MATTERS OF UNWRITTEN TITLE SUCH AS ACQUIESCENCE, ESTOPPEL, ADVERSE POSSESSION, ETC. OR WHETHER PARCELS SHOWN HEREON ARE LEGAL LOTS FOR ZONING PURPOSES, ETC.

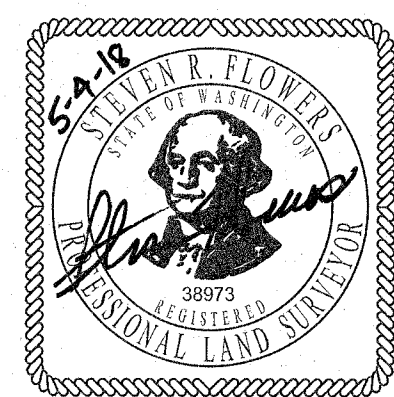
## SURVEYOR NOTES

1. ALL RECORD STATIONING IS BASED ON ORIGINAL B.P.A. PLAN MAPS. "MEAS" IS STATIONING DERIVED FROM MEASUREMENTS IN THIS SURVEY.
2. THERE MAY BE ADDITIONAL B.P.A. REAL PROPERTY RIGHTS THAT EXTEND BEYOND THE RIGHT-OF-WAY LIMITS SHOWN.
3. THIS SURVEY DOES NOT ADDRESS ENCROACHMENTS TO THE BPA RIGHT-OF-WAY.
4. TRANSMISSION LINE OPERATING NAMES ARE SUBJECT TO CHANGE BY BPA.

## SURVEYOR'S CERTIFICATE

THIS MAP CORRECTLY REPRESENTS A SURVEY MADE BY ME OR UNDER MY DIRECTION IN CONFORMANCE WITH THE REQUIREMENTS OF THE SURVEY RECORDING ACT, AT THE REQUEST OF BONNEVILLE POWER ADMINISTRATION IN FEBRUARY-APRIL, 2018

Steven R. Flowers 5-4-18  
STEVEN R. FLOWERS, PLS  
CERTIFICATE NO. 38973



**Mackay & Sposito**  
ENERGY PUBLIC WORKS LAND DEVELOPMENT  
www.mackaysposito.com  
1325 SE TECH CENTER DRIVE, SUITE 140  
VANCOUVER, WA 98683  
VANCOUVER: (360) 695-3411  
PORTLAND: (503) 289-6726  
FAX (360) 695-0833

CALC BY: SRF	CHECKED BY: SRF	DRAWN BY: AJS	JOB NO.: 16931
SER NO 335970-C			FILE: 16931-R-1-0
SHEET 1 OF 10			



HISTORY OF RIGHT-OF-WAY ACQUISITION

B.P.A. ACQUIRED THE BONNEVILLE-COULEE LINE RIGHT-OF-WAY, MILES 6 THROUGH 10, IN FEE BY CONDEMNATION IN 1939 TO 1941. THE ACQUISITIONS ARE IDENTIFIED AS TRACTS BC-14 THROUGH BC-20, BC-23, BC-25 THROUGH BC-41, BC-42D AND BC-43 ARE SHOWN ON THE BONNEVILLE-COULEE LINE 2 MILE MAPS (B.P.A. DRAWING SERIAL NUMBERS 1061-1062 AND 1178-1180). THE RIGHT-OF-WAY IS DESCRIBED AS 300 FEET IN WIDTH, 212.5 FEET LEFT AND 87.5 FEET RIGHT OF THE BONNEVILLE-COULEE SURVEY LINE.

THE ORIGINAL BONNEVILLE-COULEE LINE (MILES 6 THROUGH 10) HAS BEEN GIVEN THE DESIGN NAME BONNEVILLE-COULEE LINE 2 ON PLAN AND PROFILE MAPS PER REVISION DATED 1949. THE LINE IS NOW OPERATED AS NORTH BONNEVILLE-MIDWAY NO.1 (MILES 5 THROUGH 9) TRANSMISSION LINE.

SUBSEQUENT TO THE ACQUISITION OF THE BONNEVILLE-COULEE LINE RIGHT-OF-WAY, THE BONNEVILLE-COULEE LINE NO.1 TRANSMISSION LINE WAS DESIGNED AND BUILT WITHIN THE BONNEVILLE-COULEE LINE FEE OWNED RIGHT-OF-WAY. THE LINE IS NOW OPERATED AS THE UNDERWOOD TAP TO BONNEVILLE PHI-ALCOA NO. 1 & 2.

B.P.A. ACQUIRED THE STEVENSON TAP TO BONNEVILLE-ALCOA NO. 1 & 2 RIGHT-OF-WAY EASEMENTS (MILES 6 THROUGH 9) BY DEED CONVEYANCE IN 1963-1964. THE ACQUISITIONS ARE IDENTIFIED AS TRACTS ST-28 THROUGH ST-39 ON THE STEVENSON TAP TO BONNEVILLE-ALCOA NO 1 & 2 MILE MAPS (B.P.A. DRAWING SERIAL NUMBERS 125906-125909). THE SOUTHERLY RIGHT-OF-WAY LINE IS DESCRIBED AS RUNNING PARALLEL WITH, AND ADJOINING THE EXISTING 300 FOOT RIGHT-OF-WAY FOR THE B.P.A. BONNEVILLE-COULEE LINE. FOR THE NORTHERLY RIGHT-OF-WAY LINE, SOME OF THE DESCRIPTIONS ARE A DEFINED WIDTH LYING NORTHERLY OF SAID BONNEVILLE-COULEE RIGHT-OF-WAY. OTHER DESCRIPTIONS DEFINE THE NORTHERLY LINE RELATIVE TO THE SURVEY LINE OF STEVENSON TAP TO BONNEVILLE-ALCOA NO. 1 & 2 TRANSMISSION LINE. THIS LINE HAS BEEN REMOVED.

B.P.A. ACQUIRED EXTRA RIGHT-OF-WAY WIDTH EASEMENTS ALONG THE NORTHERLY SIDE OF THE STEVENSON TAP TO BONNEVILLE-ALCOA NO. 1 & 2 TRANSMISSION LINE BY DEED CONVEYANCE IN 1966. THE ACQUISITIONS ARE IDENTIFIED AS TRACTS ST-31XW AND ST-32XW ON THE STEVENSON TAP TO BONNEVILLE-ALCOA NO 1 & 2 MILE MAPS (B.P.A. DRAWING SERIAL NUMBER 125907). THE SOUTHERLY RIGHT-OF-WAY LINE IS DESCRIBED AS BEING THE NORTHERLY BOUNDARY OF THE EXISTING RIGHT-OF-WAY FOR B.P.A. STEVENSON TAP TO BONNEVILLE-ALCOA NO. 1 & 2 TRANSMISSION LINE. THE NORTHERLY LINE IS DESCRIBED AS LYING 50 FEET NORTHERLY FROM AND PARALLEL WITH A DESCRIBED LINE.

ANALYSIS OF RECORD DOCUMENTS

RECORD DOCUMENTS FOR THE BONNEVILLE-COULEE LINE AND STEVENSON TAP TO BONNEVILLE-ALCOA NO. 1 & 2 TRANSMISSION LINES WERE ACQUIRED AS SHOWN ON THE MILE MAPS. THE STATIONS, BEARINGS AND DISTANCE CALLS FOR THE SURVEY LINES AND CADASTRAL TIES IN THE DESCRIPTIONS ARE AS SHOWN ON B.P.A. MAPPING.

A REVIEW OF THE FOLLOWING LISTED PARCELS WAS REQUESTED TO CONFIRM THE OWNERSHIP CHARACTER OF B.P.A.'S RIGHT-OF-WAY.

TAX LOTS:  
03073500020000, 03073500030000, 03073620150000, 03073620080000, 03073620090000, 03073620098000, 03752500090000, 03752500100000, 03752500080000, 03752500110000, 03752500010000, 03083000030000, 03083000020000.

ALL BUT ONE OF THE CURRENT DEEDS REVIEWED CONTAINED AN EXCEPTION FOR OR IDENTIFIED AS THE PARCEL BOUNDARY LINE TO THE FEE OWNED 300' WIDE STRIP OF LAND FOR B.P.A. RIGHT-OF-WAY. THE DEED FOR PARCEL 03083000020000 (AS SHOWN ON SHEETS 9 AND 10) DOES NOT IDENTIFY OR EXCEPT OUT SAID RIGHT-OF-WAY.

CONTROL AND PROCEDURES

DURING FEBRUARY AND MARCH 2018, MACKAY SPOSITO ESTABLISHED PRIMARY AND SECONDARY CONTROL POINTS AND CONDUCTED A PRELIMINARY RETRACEMENT FIELD SURVEY FOR THE PROJECT. MEASUREMENTS WERE OBSERVED TO ANGLE POINT TOWER CENTERS, ON-LINE (P.O.T.) TOWER CENTERS, RECOVERED ANGLE POINT AND P.O.T. MONUMENTS AND PUBLIC LAND SURVEY SYSTEM (PLSS) CORNERS.

STATIC AND RTK GPS MEASUREMENTS WERE PERFORMED USING TRIMBLE R8 AND R10 DUAL FREQUENCY RECEIVERS. THE PRIMARY CONTROL POINTS WERE MEASURED WITH STATIC GPS OBSERVATIONS AND PROCESSED USING THE NATIONAL GEODETIC SURVEY'S (NGS) ONLINE POSITIONING USER SERVICE (OPUS). SECONDARY CONTROL POINTS AND FOUND PLSS CORNERS WERE MEASURED WITH RTK GPS MEASUREMENTS FROM TWO INDEPENDENT CONTROL POINTS. SURVEY DATA WAS ADJUSTED TO MEET THE CHI-SQUARE TEST AT A 95% CONFIDENCE INTERVAL AND ALL ADJUSTMENTS WERE PERFORMED WITH TRIMBLE BUSINESS CENTER LEAST SQUARES ADJUSTMENT PROGRAM.

TERRESTRIAL MEASUREMENTS WERE MADE USING A TRIMBLE 5" S6 ROBOTIC TOTAL STATION IN AREAS UNSUITABLE FOR USING GPS METHODS. DATA WAS COLLECTED RELATIVE TO TWO OR THREE SECONDARY CONTROL POINTS USING REDUNDANT MEASUREMENTS.

SCALE FACTORS WE COMPUTED AT THE SURVEY LINE ANGLE POINTS AND UTILIZED TO COMPUTE A MEAN PROJECT SCALE FACTOR. USING A MEAN SCALE FACTOR RESULTS IN A LESS THAN 0.2 FEET ABSOLUTE ERROR IN DISTANCE OVER THE LENGTH OF THE SURVEY LINE.  
PROJECT SCALE FACTOR = 1.000005025

TOWER CENTERS WERE COMPUTED AT THE INTERSECTION OF GPS RTK MEASUREMENTS TAKEN AT EACH OF THE FOUR TOWER LEGS.

RETRACEMENT AND ANALYSIS PROCEDURES

THE SURVEY LINE AND ASSOCIATED TIES TO CADASTRAL MONUMENTS SHOWN ON B.P.A. BONNEVILLE-COULEE LINE 2 PLAN AND PROFILE MAPS (SERIAL NUMBERS 1061 THROUGH 1062, 1178 THROUGH 1180, AND 1219 THROUGH 1223), B.P.A. BONNEVILLE-COULEE LINE RIGHT-OF-WAY PLAT MAPS (SERIAL NUMBERS 2828 AND 2989 THROUGH 2993), B.P.A. STEVENSON TAP TO BONNEVILLE-ALCOA NO. 1 & 2 PLAN MAPS (SERIAL NUMBERS 125906 THROUGH 125909) AND B.P.A. BONNEVILLE-COULEE LINE NO. 1 PLAN AND PROFILE MAPS (SERIAL NUMBERS 7671 THROUGH 7675) WERE CONFIRMED BY REVIEWING ACQUISITION DOCUMENTS. B.P.A. STEEL TOWER SITE DATA LISTS WERE REVIEWED TO IDENTIFY OFFSET TOWERS AND RECORD OFFSET DISTANCES TO SURVEY ANGLE POINTS. POSITIONS OF ANGLE POINT AND P.O.T. STRUCTURES WERE MEASURED. RECOVERED B.P.A. ANGLE POINT, P.O.T. AND CADASTRAL MONUMENTS WERE EVALUATED. THE RESULTING RETRACED SURVEY LINE REPRESENTS A BEST-FIT SOLUTION TO THE MEASURED ELEMENTS LISTED ABOVE.

MACKAY SPOSITO MEASURED TO ANGLE POINT TOWERS, ADDITIONAL ON-LINE TOWERS, RECOVERED ANGLE POINT AND P.O.T. MONUMENTS, AND CADASTRAL CORNERS. FIELD SEARCHES WERE MADE FOR P.O.T. MONUMENTS AND ANGLE POINT MONUMENTS AT LOCATIONS SHOWN ON B.P.A.'S P.O.T./BM LIST. A HUB AND TACK WAS FOUND AT THE P.O.T. TOWER AS24(5/1), STATION 263+50. A HUB AND TACK WAS FOUND AT ANGLE POINT TOWER AS26(5/3), STATION 282+00. A B.P.A. ALUMINUM CAP WAS FOUND AT ANGLE POINT TOWER AS31(6/2), STATION 325+90.

B.P.A. ALSO PROVIDED A STEEL TOWER SITE DATA LIST AND LIDAR POSITIONS OF TOWER CENTERS (CENTROIDS) FROM LIDAR FLIGHT SCAN DATA. THE ABOVE ITEMS AND OTHER DATA WERE CONSIDERED IN RESOLVING THE SURVEY ACQUISITION LINE.

SURVEY LINE RESOLUTION NOTES

BONNEVILLE-COULEE LINE

THE TANGENT BETWEEN STATIONS 271+56 AND 282+00 WAS RESOLVED BY HOLDING THE SURVEYED TOWER CENTER AT AS25(5/2) AND HOLDING THE FOUND HUB AND TACK AT RECORD OFFSET OF 0.6'LT AT ANGLE POINT TOWER AS26(5/3). THE MEASURED DISTANCE IS 0.28 FEET SHORTER THAN THE RECORD MAP DISTANCE.

THE FIRST P.O.T. TOWER PRECEEDING THE TANGENT WAS SURVEYED FOR A CHECK OF THE DEFLECTION ANGLES. THE MEASURED DEFLECTION ANGLE AT STATION 271+56.00 IS 0°02'44"RT THAT DIFFERS FROM THE RECORD ANGLE BY 00°00'36".

THE TANGENT BETWEEN STATIONS 282+00 AND 325+90 WAS RESOLVED BY HOLDING THE FOUND HUB AND TACK AT ANGLE POINT TOWER AS26(5/3) 0.6'LT AND HOLDING THE FOUND B.P.A. MONUMENT AT ANGLE POINT TOWER AS31(6/2) 1.7'RT. THE MEASURED DISTANCE IS 0.99 FEET SHORTER THAN THE RECORD MAP DISTANCE. THE MEASURED DEFLECTION ANGLE AT STATION 282+00 IS 1°16'52"RT THAT DIFFERS FROM THE RECORD ANGLE BY 0°00'27". THERE ARE FOUR P.O.T. TOWERS ALONG THIS TANGENT, AS27(5/4), AS28(5/5), AS29(5/6) AND AS30(6/1). AS27 IS WITHIN 0.1' OF THE RESOLVED SURVEY LINE. AS28, AS29 AND AS30 ARE 1.6'RT, 1.9'RT AND 1.4'RT RESPECTIVELY. THE TOWERS, CONDUCTORS AND INSULATORS DO NOT APPEAR TO BEING PULLED OFFLINE DUE TO TOWER OR SURFACE MOVEMENT. THE OFFSET IS UNEXPLAINED. WE FOUND ONE RIGHT-OF-WAY CARSONITE MARKER AT STATION 291+65.3, 212.44'LT. THIS IS WITHIN 0.1' OF THE RESOLVED AND RECORD RIGHT-OF-WAY AT 212.50'LT. WE ALSO LOCATED TWO PRIVATE BOUNDARY MONUMENTS IN THIS AREA PER R.O.S. BK.2 PG.65A. THE SURVEY DOES NOT SHOW THAT ANY OF THE B.P.A. TOWERS WERE LOCATED OR RELIED UPON TO RESOLVE THE B.P.A. RIGHT-OF-WAY LOCATION. ONE MONUMENT WAS FOUND AT STATION 289+69.8, 87.24'RT. THIS MONUMENT IS ADJACENT TOWER AS27(5/4), 289+70. THIS MONUMENT IS 0.26'LT (INSIDE) OF THE RESOLVED AND RECORD B.P.A. RIGHT-OF-WAY OF 87.50'RT. THE SECOND MONUMENT IS LOCATED AT STATION 294+26.0, 87.87'RT. THIS MONUMENT IS 0.37'RT (OUTSIDE) OF SAID B.P.A. RIGHT-OF-WAY.

THE TANGENT BETWEEN STATIONS 325+90 AND 376+56.40 WAS RESOLVED HOLDING THE FOUND B.P.A. MONUMENT AT ANGLE POINT TOWER AS31(6/2) 1.7'RT AND HELD RECORD OFFSET FROM THE SURVEYED TOWER CENTER FOR AS36(7/2) 0.3'LT. THE MEASURED DISTANCE IS 1.48 FEET SHORTER THAN THE RECORD MAP DISTANCE. THE MEASURED DEFLECTION ANGLE AT STATION 325+90 IS 35°40'31" THAT DIFFERS FROM THE RECORD ANGLE BY 0°00'01".

THE TANGENT BETWEEN STATIONS 376+56.4 AND 478+56.88 WAS RESOLVED HOLDING THE SURVEYED TOWER CENTER FOR AS36(7/2) 0.3'LT AND HOLDING THE SURVEYED TOWER CENTER FOR AS45(9/1) 0.7'RT. THE MEASURED DISTANCE IS 3.46 FEET SHORTER THAN RECORD MAP DISTANCE. THE MEASURED DEFLECTION ANGLE AT STATION 376+56.40 IS 7°42'53"LT THAT DIFFERS FROM THE RECORD ANGLE BY 0°00'07".

THE FIRST P.O.T. TOWER BEYOND THE TANGENT WAS SURVEYED FOR A CHECK OF THE DEFLECTION ANGLES. THE MEASURED DEFLECTION ANGLE AT STATION 478+56.88 IS 15°44'44"RT THAT DIFFERS FROM THE RECORD ANGLE BY 0°00'46".



<b>MacKay Sposito</b>		1325 SE TECH CENTER DRIVE, SUITE 140 VANCOUVER, WA 98683 VANCOUVER: (360) 695-3411 PORTLAND: (503) 289-6726 FAX (360) 695-0833	
ENERGY PUBLIC WORKS LAND DEVELOPMENT		www.mackaysposito.com	
CALC BY: <u>SRE</u>	CHECKED BY: <u>SRE</u>	DRAWN BY: <u>AJS</u>	JOB NO.: <u>16931</u>
SER NO 335970-C		FILE: <u>16931-R-2-0</u>	SHEET 2 OF 10



SURVEY LINE RESOLUTION NOTES (CONTINUED)

STEVENSON TAP TO BONNEVILLE-ALCOA NO. 1 & 2  
THIS TRANSMISSION LINE HAS BEEN REMOVED. B.P.A. HAS REQUESTED THAT PART OF THE EASEMENT RIGHT-OF-WAY WITHIN THE PROJECT AREA FROM APPROXIMATE STATION 345+52 TO 478+56.88 BE RESOLVED. A SEARCH FOR MONUMENTS AT THE COMPUTED ANGLE POINTS AND ANY OTHER REMAINING EVIDENCE WAS PERFORMED. NO REMAINING EVIDENCE WAS FOUND.

A COMBINATION OF THE RECORD EASEMENT DOCUMENTS, STATIONS, DISTANCES, DEFLECTION ANGLES, MILE MAPS AND THE RESOLVED SURVEY LINE FOR BONNEVILLE-COULEE TRANSMISSION LINE WERE UTILIZED AS THE BEST EVIDENCE TO RESOLVE AND LOCATE THE NORTHERLY RIGHT-OF-WAY LINE FOR THE STEVENSON TAP TO BONNEVILLE-ALCOA NO. 1 & 2 TRANSMISSION LINE.

AT KANAKA CREEK ROAD ALONG THE WEST END OF THE B.P.A. STEVENSON TAP TO BONNEVILLE-ALCOA NO. 1 & 2 RIGHT-OF-WAY, THE ACQUISITION DOCUMENT FOR TRACT ST-28, RECORDED IN BK.51 PG.411, DESCRIBES THE LINE AS "ALONG THE MEANDERS OF SAID ROAD". WE LOCATED THE CENTER LINE MONUMENTS FOR KANAKA CREEK ROAD AND RESOLVED CENTER LINE PER QUIT CLAIM DEED RECORDED IN BK.61 PG.245. THE WESTERLY ROAD RIGHT-OF-WAY WAS HELD FOR THE END OF THE B.P.A. RIGHT-OF-WAY EASEMENT. B.P.A. SURVEY LINE STATION IS 345+82.6.

B.P.A. MAPPING CADASTRAL TIES

NOTE: THE PURPOSE OF THE CADASTRAL TIES IS TO CONFIRM THE LOCATION OF THE RESOLVED SURVEY LINE.

S1/4 CORNER SECTION 35, T.3N., R.7E. MEASURED STATIONING AT THE SOUTH LINE OF SECTION 35 IS 258+94.78. RECORD IS 258+95.43 FOR A DIFFERENCE OF -0.65'. MEASURED DISTANCE FROM SURVEY LINE IS 232.02'. RECORD IS 232.24' FOR A DIFFERENCE OF -0.2'. B.P.A. FOUND A ROCK MOUND FOR THIS CORNER. MONUMENT IS NOW A 3" BRASS CAP IN CIRCLE OF STONES. THE POSITION OF THE CORNER COMPARES WELL WITH B.P.A. RECORD.

E1/4 CORNER SECTION 35, T.3N., R.7E. MEASURED STATIONING AT THE EAST LINE OF SECTION 35 IS 300+46.86. RECORD IS 300+45.74 FOR A DIFFERENCE OF +1.12'. MEASURED DISTANCE FROM SURVEY LINE IS 453.58'. RECORD IS 464.26' FOR A DIFFERENCE OF 10.98'. B.P.A. FOUND AN IRON PIPE WITH BRASS PLATE. MONUMENT IS NOW AN IRON PIPE AND BRASS CAP. POSITION OF MONUMENT APPEARS TO HAVE CHANGED COMPARED TO B.P.A. RECORD.

N1/4 CORNER SECTION 36, T.3N., R.7E. MEASURED STATIONING AT THE NORTH LINE OF SECTION 36 IS 333+22.68. RECORD IS 333+24.71 FOR A DIFFERENCE OF -2.03'. MEASURED DISTANCE FROM SURVEY LINE IS 273.93'. RECORD IS 271.96' FOR A DIFFERENCE OF 1.97'. B.P.A. FOUND A CROSS IN ROCK. THE ROCK WAS FOUND TO BE DISTURBED AND BROKEN. THE CORNER WAS RESET AT THE REQUEST OF B.P.A. PER LCR BK135 PG747. THE CURRENT POSITION OF THE CORNER COMPARES FAVORABLY TO B.P.A. RECORD.

NW CORNER SECTION 36, T.3N., R.7.5E MEASURED STATIONING AT THE WEST LINE OF SECTION 36 IS 363+44.61. RECORD IS 363+44.48 FOR A DIFFERENCE OF -0.13'. MEASURED DISTANCE FROM SURVEY LINE IS 277.79'. RECORD IS 278.08' FOR A DIFFERENCE OF 0.29'. B.P.A. FOUND A U.S.E.D. MON. THE MONUMENT FOUND IS AN ARMY CORPS OF ENGINEERS CAP ALSO STAMPED "BONNEVILLE POWER NAVIG. PROJECT" AND APPEARS TO BE THE SAME MONUMENT SHOWN ON B.P.A. MAPPING. THE POSITION OF THE CORNER COMPARES WELL WITH B.P.A. RECORD. I CHOSE TO HOLD THIS CORNER AS IT IS RELATIVE TO THE RECORD BONNEVILLE-COULEE SURVEY LINE OVER THE OTHER POSTION FOR THIS CORNER. SEE NOTE BELOW.

NOTE PER R.O.S. 2005159356: ANOTHER POSITION FOR THE NORTHWEST CORNER OF SECTION 36 WOULD BE WEST, 18.25' ACCORDING TO R.O.S. BK. 2, PG. 82 AND WEST, 18.01' ACCORDING TO A 1967 SURVEY BY BERT MASON, JR. ON FILE WITH THE SKAMAINIA COUNTY ENGINEER'S OFFICE. THESE POSITIONS WOULD PLACE THE CORNER ON THE SECOND GUIDE MERIDIAN (RANGE LINE). I CHOSE TO HOLD THE MONUMENTED POSITION FOR THE "LOCAL" SECTION CORNER AS SHOWN IN R.O.S. BK. 1, PG. 239 WHICH WAS DONE FOR THE WESTERLY ADJOINER. THIS SURVEY HAS NOW BEEN RELIED AND IMPROVED UPON IN GOOD FAITH FOR THE PAST 25 YEARS. THE UNITED STATES DEPT. OF THE INTERIOR'S (B.P.A.) PLAN FOR "BONNEVILLE-COULEE LINE 2" SHEET 7 OF 24, DATED 11-25-38 ALSO HELD THIS CORNER FOR THE PURPOSE OF THEIR SURVEY AND SUBSEQUENT DECLARATION OF TAKING.

W1/4 CORNER SECTION 30, T.3N., R.8E. MEASURED STATIONING AT THE WEST LINE OF SECTION 30 IS 427+60.63. RECORD IS 426+70.97 FOR A DIFFERENCE OF +89.66'. MEASURED DISTANCE FROM SURVEY LINE IS 848.90'. RECORD IS 854.80' FOR A DIFFERENCE OF 5.90'. B.P.A. SET AN IRON PIPE FOR THIS CORNER. MONUMENT IS NOW A 2" BRASS CAP AND THE POSITION DIFFERS SIGNIFICANTLY FROM B.P.A. RECORD.

E1/4 CORNER SECTION 30, T.3N., R.8E. MEASURED STATIONING AT THE EAST LINE OF SECTION 30 IS 481+88.76. RECORD IS 481+88.88 FOR A DIFFERENCE OF 0.12'. MEASURED DISTANCE FROM SURVEY LINE IS 1069.17'. RECORD IS 1070.27' FOR A DIFFERENCE OF 1.10'. B.P.A. SET AN IRON PIPE FOR THIS CORNER. FOUND A 2" IRON PIPE AT CORNER AND THE POSITION COMPARES WELL WITH B.P.A. RECORD.

SURVEY REFERENCES

- (1) BK 1 PG 146

(2) B.P.A. SERIAL NO. 2828

(3) B.P.A. SERIAL NO. 2989

(4) BK 1 PG 74

(5) BK 3 PG 122

(6) B.P.A. SERIAL NO. 2990
- (7) B.P.A. SERIAL NO. 2991

(8) BK 1 PG 239

(9) B.P.A. SERIAL NO. 2993

(10) BK 2 PG 112

(11) B.P.A. SERIAL NO. 125908
- B.P.A. PLAT MAP SERIAL NUMBERS

2828, 2989, 2990, 2991, 2992, 2993

B.P.A. MILE MAP SERIAL NUMBERS

1061, 1062, 1178, 1179, 1180, 125906, 125907, 125908

BONNEVILLE-COULEE LINE

B.P.A. MAP SERIAL NO.	B.P.A. TRACT ID	RECORDING DATE	FEE NUMBER
1061	BC-14	10/8/1941	TAKING - CIVIL NO. 34
1061	BC-15	11/20/1939	TAKING - CIVIL NO. 34
1061	BC-16	12/5/1939	TAKING - CIVIL NO. 34
1061	BC-17	7/22/1941	TAKING - CIVIL NO. 34
1061	BC-18	10/21/1940	TAKING - CIVIL NO. 34
1061	BC-19	10/21/1940	TAKING - CIVIL NO. 34
1061	BC-20	6/20/1940	TAKING - CIVIL NO. 34
1061-1062	BC-23	4/18/1940	TAKING - CIVIL NO. 34
1062	BC-25	7/10/1940	TAKING - CIVIL NO. 34
1062	BC-26	7/30/1940	TAKING - CIVIL NO. 34
1062	BC-27	4/18/1940	TAKING - CIVIL NO. 34
1062	BC-28	3/6/1940	TAKING - CIVIL NO. 34
1062	BC-29	4/4/1940	TAKING - CIVIL NO. 34
1062	BC-30	4/10/1940	TAKING - CIVIL NO. 34
1062	BC-31	4/30/1940	TAKING - CIVIL NO. 34
1062	BC-32	6/11/1940	TAKING - CIVIL NO. 34
1062	BC-33	6/20/1940	TAKING - CIVIL NO. 34
1178	BC-34	4/19/1940	TAKING - CIVIL NO. 34
1178	BC-35	5/8/1940	TAKING - CIVIL NO. 34
1178	BC-36	7/25/1940	TAKING - CIVIL NO. 34
1178	BC-37	8/30/1940	TAKING - CIVIL NO. 34
1178	BC-38	4/18/1940	TAKING - CIVIL NO. 34
1178	BC-39	12/5/1939	TAKING - CIVIL NO. 34
1178-1179	BC-40	7/30/1940	TAKING - CIVIL NO. 34
1178	BC-41	5/31/1940	TAKING - CIVIL NO. 34
1179	BC-42D	10/29/1940	TAKING - CIVIL NO. 34
1179-1180	BC-43	2/11/1941	TAKING - CIVIL NO. 34

STEVENSON TAP TO  
BONNEVILLE-ALCOA NO 1 & 2 (LINE REMOVED)

B.P.A. MAP SERIAL NO.	B.P.A. TRACT ID	RECORDING DATE	RECORDING NUMBER
125906	ST-28	7/11/1963	BOOK 51 PAGE 411
125906	ST-29	5/14/1963	BOOK 51 PAGE 281
125907	ST-30	3/26/1963	BOOK 51 PAGE 175
125907	ST-31	5/13/1963	BOOK 51 PAGE 272
125907	ST-31XW	2/14/1966	BOOK 55 PAGE 315
125907	ST-32	6/5/1963	BOOK 51 PAGE 346
125907	ST-32XW	3/3/1966	BOOK 55 PAGE 336
125907	ST-33	6/24/1963	BOOK 51 PAGE 368
125907	ST-34	9/5/1963	BOOK 52 PAGE 31
125907	ST-35	6/24/1963	BOOK 51 PAGE 368
125907-125908	ST-36	7/3/1963	BOOK 51 PAGE 399
125908	ST-37	5/24/1963	BOOK 51 PAGE 323
125908-125909	ST-38/ST-39	3/13/1964	BOOK 52 PAGE 357



MacKay Sposito

1325 SE TECH CENTER DRIVE, SUITE 140  
VANCOUVER, WA 98683  
VANCOUVER: (360) 695-3411  
PORTLAND: (503) 289-6726  
FAX (360) 695-0833

ENERGY PUBLIC WORKS LAND DEVELOPMENT

www.mackaysposito.com

CALC BY: SRF CHECKED BY: SRF DRAWN BY: AJS

SER NO 335970-C FILE: 16931-R-3-0

JOB NO.: 16931

SHEET 3 OF 10







# RECORD OF SURVEY

**FOR THE BONNEVILLE POWER ADMINISTRATION  
BONNEVILLE-COULEE LINE RIGHT-OF-WAY MILES 6 THRU 9  
AND STEVENSON TAP TO BONNEVILLE-ALCOA No. 1 & 2  
RIGHT-OF-WAY MILES 7 THRU 9**

IN THE NORTHEAST 1/4 OF THE SOUTHEAST 1/4, AND THE SOUTHEAST 1/4 OF THE  
NORTHEAST 1/4 OF SECTION 35,  
IN THE SOUTHWEST 1/4 OF THE NORTHWEST 1/4, THE NORTHWEST 1/4 OF THE NORTHWEST 1/4,  
AND THE NORTHEAST 1/4 OF THE NORTHWEST 1/4 OF SECTION 36, ALL IN T3N, R7E, W.M.;  
SKAMANIA COUNTY, WASHINGTON

## BASIS OF BEARINGS

BEARINGS AND COORDINATES SHOWN ARE GRID, BASED ON THE WASHINGTON STATE  
PLANE COORDINATE SYSTEM, SOUTH ZONE (4602), NAD83(2011)(EPOCH:2010.0),  
US SURVEY FOOT. DISTANCES SHOWN HEREON ARE GROUND DISTANCES, TO CONVERT  
DISTANCES SHOWN TO GRID, MULTIPLY BY 1.000005025

MONUMENT TABLE


POINT ID	GRID NORTHING	GRID EASTING	MONUMENT DESCRIPTION	STATION	OFFSET
BC-P00506	137091.01	1281886.14	3-1/4" B.P.A. AC W/PUNCH "BC-P00506 LS38973 MSI 18"	288+92.9	0.00
BC-P00507	137560.51	1282308.34	3-1/4" B.P.A. AC W/PUNCH "BC-P00507 LS38973 MSI 18"	295+24.4	0.00
BC-P00508	137856.67	1282574.71	3-1/4" B.P.A. AC W/PUNCH "BC-P00508 LS38973 MSI 18"	299+22.7	0.00
BC-P00509	138175.16	1282861.10	3-1/4" B.P.A. AC W/PUNCH "BC-P00509 LS38973 MSI 18"	303+51.0	0.00
BC-P00510	138450.88	1283109.04	3-1/4" B.P.A. AC W/PUNCH "BC-P00510 LS38973 MSI 18"	307+21.8	0.00
BC-P00601	138890.34	1283504.23	3-1/4" B.P.A. AC W/PUNCH "BC-P00601 LS38973 MSI 18"	313+12.8	0.00
BC-P00602	139232.72	1283812.20	3-1/4" B.P.A. AC W/PUNCH "BC-P00602 LS38973 MSI 18"	317+73.3	0.00
BC-P00603	139641.99	1284180.19	3-1/4" B.P.A. AC W/PUNCH "BC-P00603 LS38973 MSI 18"	323+23.7	0.00
BC-A00604	139839.27	1284357.59	FOUND 3-1/4" B.P.A. AC "RSI-93 AP 325+90.0"	325+90.00	0.00

### LEGEND

Ah	STATION AHEAD
Bk	STATION BACK
L.C.R.	LAND CORNER RECORD
B.P.A.	BONNEVILLE POWER ADMINISTRATION
U.S.D.O.E.	UNITED STATES DEPARTMENT OF ENERGY
A.F.N.	AUDITOR'S FILE NUMBER
AS XX	B.P.A. TOWER SERIAL NUMBER

$\frac{X}{\dots}$  B.P.A. OPERATING TOWER NUMBERS

XXX.XX  TRANSMISSION LINE MILE MARKER  
WITH STATION PER B.P.A. MILE MAPS

△	CONTROL MONUMENT AS NOTED
○	FOUND MONUMENT AS NOTED
●	SET 3-1/4" ALUMINUM CAP ON 5/8" IRON ROD.
	FOUND MONUMENT AT TOWER



B.P.A. ROTATED STEEL TOWER

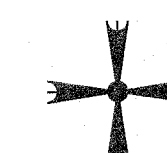
\_\_\_\_\_ ACQUISITION SURVEY LINE  
 - - - - - B.P.A. TRANSMISSION LINE RIGHT-OF-WAY (FEE)  
 - - - - - B.P.A. TRANSMISSION LINE RIGHT-OF-WAY (EASEMENT)  
 \_\_\_\_\_ TOWNSHIP AND RANGE LINE  
 \_\_\_\_\_ SECTION LINE  
 \_\_\_\_\_ QUARTER SECTION LINE  
 \_\_\_\_\_ SIXTEENTH SECTION LINE  
 - - - - - PARCEL DATA PER SKAMANIA COUNTY  
 - - - - - GEOGRAPHIC INFORMATION SYSTEM (G.I.S.)

## SURVEY REFERENCES

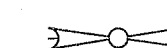
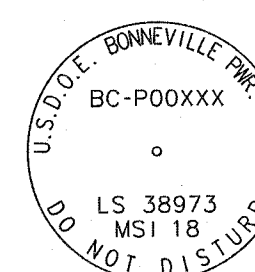
REFERENCE B.P.A. PLAT MAP 2828 & 2989  
REFERENCE B.P.A. MILE MAP 1061 & 1062  
(1) BK 1 PG 146  
(2) B.P.A. SERIAL NO. 2828



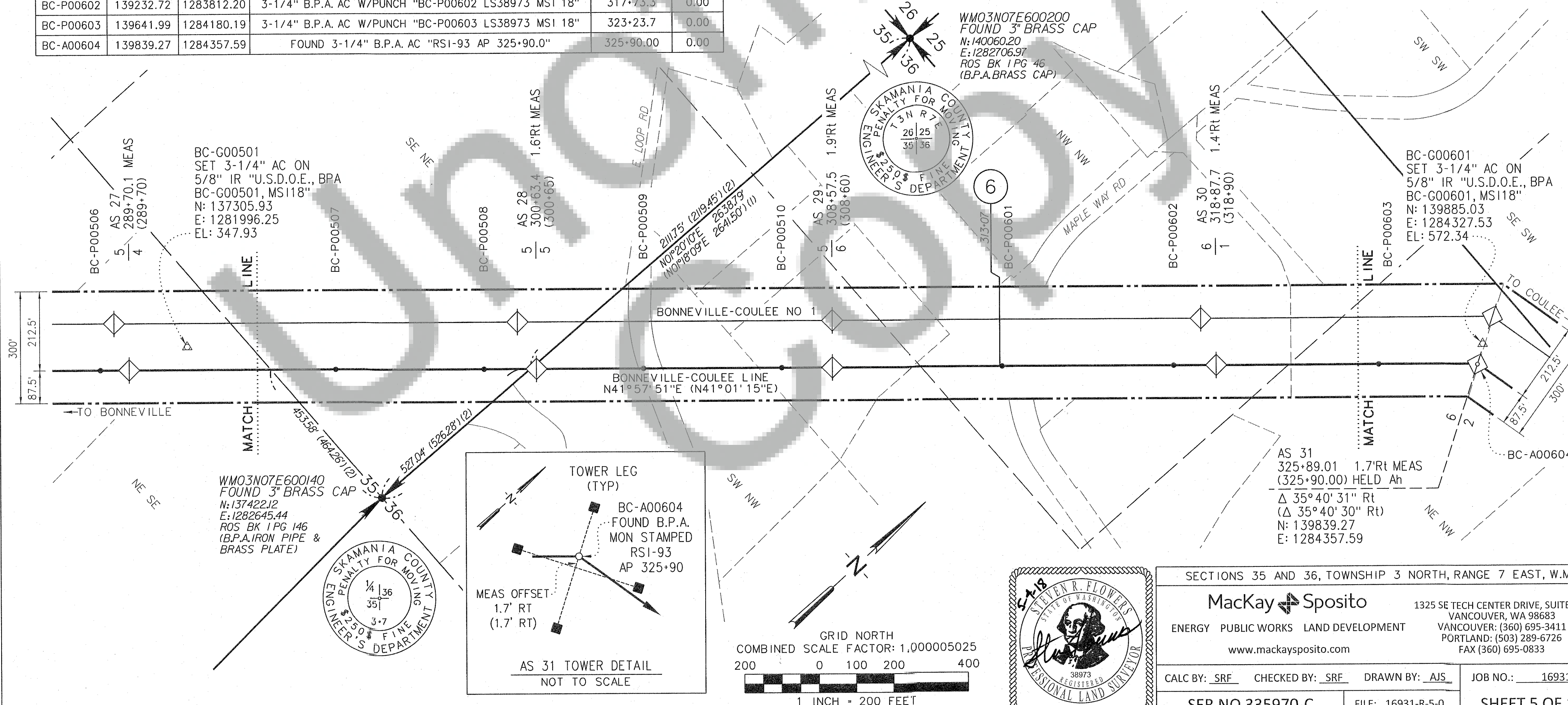
CENTER OF SECTION



 FOUND PLSS CORNER MONUMENT

 CALCULATED PLSS CORNER

SET B.P.A. MONUMENT  
DETAIL  
(STAMPING VARIES BY POINT NUMBER)





# RECORD OF SURVEY

**FOR THE BONNEVILLE POWER ADMINISTRATION  
BONNEVILLE-COULEE LINE RIGHT-OF-WAY MILES 6 THRU 9  
AND STEVENSON TAP TO BONNEVILLE-ALCOA No. 1 & 2  
RIGHT-OF-WAY MILES 7 THRU 9**

IN THE NORTHEAST 1/4 OF THE NORTHWEST 1/4, AND THE NORTHWEST 1/4 OF THE  
NORTHEAST 1/4 OF SECTION 36  
IN THE SOUTHEAST 1/4 OF THE SOUTHWEST 1/4, THE SOUTHWEST 1/4 OF THE SOUTHEAST 1/4,  
AND THE SOUTHEAST 1/4 OF THE SOUTHEAST 1/4 OF SECTION 25 ALL IN T3N, R7E, W.M.:  
SKAMANIA COUNTY, WASHINGTON

## BASIS OF BEARINGS

BEARINGS AND COORDINATES SHOWN ARE GRID, BASED ON THE WASHINGTON STATE PLANE COORDINATE SYSTEM, SOUTH ZONE (4602), NAD83(2011)(EPOCH:2010.0), US SURVEY FOOT. DISTANCES SHOWN HEREON ARE GROUND DISTANCES, TO CONVERT DISTANCES SHOWN TO GRID, MULTIPLY BY 1.000005025






MONUMENT TABLE

POINT ID	GRID NORTHING	GRID EASTING	MONUMENT DESCRIPTION	STATION	OFFSET
BC-P00603	139641.99	1284180.19	3-1/4" B.P.A. AC W/PUNCH "BC-P00603 LS38973 MSI 18"	323+23.7	0.00
BC-A00604	139839.27	1284357.59	FOUND 3-1/4" B.P.A. AC "RSI-93 AP 325+90.0"	325+90.00	0.00
BC-P00605	139925.49	1284751.04	3-1/4" B.P.A. AC W/PUNCH "BC-P00605 LS38973 MSI 18"	329+92.8	0.00
BC-P00606	140143.42	1285745.44	3-1/4" B.P.A. AC W/PUNCH "BC-P00606 LS38973 MSI 18"	340+10.8	0.00
BC-P00607	140210.70	1286052.65	3-1/4" B.P.A. AC W/PUNCH "BC-P00607 LS38973 MSI 18"	343+25.3	0.00
BC-P00608	140304.22	1286479.27	3-1/4" B.P.A. AC W/PUNCH "BC-P00608 LS38973 MSI 18"	347+62.0	0.00
BC-P00609	140433.76	1287070.54	3-1/4" B.P.A. AC W/PUNCH "BC-P00609 LS38973 MSI 18"	353+67.3	0.00

## LEGEND

Ah	STATION AHEAD
Bk	STATION BACK
L.C.R.	LAND CORNER RECORD
B.P.A.	BONNEVILLE POWER ADMINISTRATION
U.S.D.O.E.	UNITED STATES DEPARTMENT OF ENERGY
A.F.N.	AUDITOR'S FILE NUMBER
AS XX	B.P.A. TOWER SERIAL NUMBER
$\frac{X}{Y}$	B.P.A. OPERATING TOWER NUMBERS


XXX.XX (X) TRANSMISSION LINE MILE MARKER  
WITH STATION PER B.P.A. MILE MAPS

	CONTROL MONUMENT AS NOTED
	FOUND MONUMENT AS NOTED
	SET 3-1/4" ALUMINUM CAP ON 5/8" IRON ROD.
	FOUND MONUMENT AT TOWER
	B.P.A. ROTATED STEEL TOWER

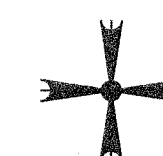
\_\_\_\_\_ ACQUISITION SURVEY LINE  
 - - - - - B.P.A. TRANSMISSION LINE RIGHT-OF-WAY (FEE)  
 - - - - - B.P.A. TRANSMISSION LINE RIGHT-OF-WAY (EASEMENT)  
 \_\_\_\_\_ TOWNSHIP AND RANGE LINE  
 \_\_\_\_\_ SECTION LINE  
 \_\_\_\_\_ QUARTER SECTION LINE  
 \_\_\_\_\_ SIXTEENTH SECTION LINE  
 \_\_\_\_\_ PARCEL DATA PER SKAMANIA COUNTY  
 \_\_\_\_\_ GEOGRAPHIC INFORMATION SYSTEM (G.I.S.)

## SURVEY REFERENCES


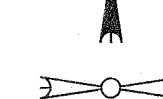
REFERENCE B.P.A. PLAT MAP 2989 & 2990  
REFERENCE B.P.A. MILE MAP 1062 & 125906  
(3) B.P.A. SERIAL NO. 2989  
(4) BK 1 PG 74  
(5) BK 3 PG 122



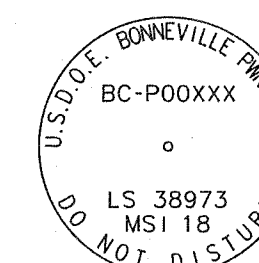
CENTER OF SECTION



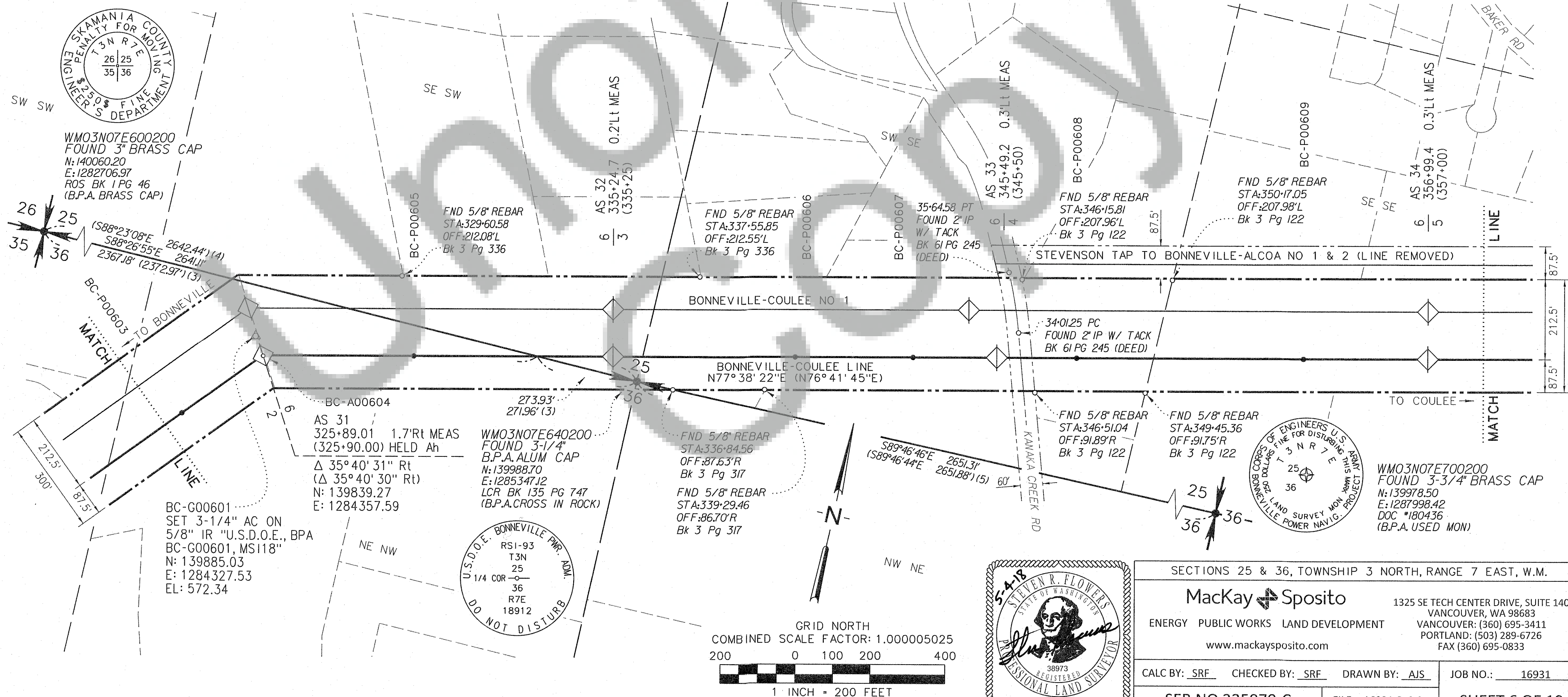
FOUND PLSS CORNER MONUMENT



CALCULATED PLSS CORNER



SET B.P.A. MONUMENT  
DETAIL  
(STAMPING VARIES BY POINT NUMBER)





# RECORD OF SURVEY

## FOR THE BONNEVILLE POWER ADMINISTRATION

### BONNEVILLE-COULEE LINE RIGHT-OF-WAY MILES 6 THRU 9

### AND STEVENSON TAP TO BONNEVILLE-ALCOA No. 1 & 2

### RIGHT-OF-WAY MILES 7 THRU 9

IN THE SOUTHEAST 1/4 OF THE SOUTHEAST 1/4 OF SECTION 25, T3N, R7E, W.M.:

IN GOVERNMENT LOT 3 AND GOVERNMENT LOT 2 OF SECTION 36,  
GOVERNMENT LOT 10, GOVERNMENT LOT 11, GOVERNMENT LOT 12,  
OF SECTION 25, ALL IN T3N, R7-1/2E, W.M.; SKAMANIA COUNTY, WASHINGTON

#### BASIS OF BEARINGS

BEARINGS AND COORDINATES SHOWN ARE GRID, BASED ON THE WASHINGTON STATE  
PLANE COORDINATE SYSTEM, SOUTH ZONE (4602), NAD83(2011)(EPOCH:2010.0),  
US SURVEY FOOT. DISTANCES SHOWN HEREON ARE GROUND DISTANCES, TO CONVERT  
DISTANCES SHOWN TO GRID, MULTIPLY BY 1.000005025

MONUMENT TABLE

POINT ID	GRID NORTHING	GRID EASTING	MONUMENT DESCRIPTION	STATION	OFFSET
BC-P00610	140580.76	1287741.32	3-1/4" B.P.A. AC W/PUNCH "BC-P00610 LS38973 MSI 18"	360+54.0	0.00
BC-P00611	140644.83	1288033.66	3-1/4" B.P.A. AC W/PUNCH "BC-P00611 LS38973 MSI 18"	363+53.3	0.00
BC-P00701	140760.51	1288561.54	3-1/4" B.P.A. AC W/PUNCH "BC-P00701 LS38973 MSI 18"	368+93.7	0.00
BC-A00702	140923.48	1289305.13	3-1/4" B.P.A. AC W/PUNCH "BC-A00702 LS38973 MSI 18"	376+56.40	0.00
BC-P00703	141299.47	1290334.09	3-1/4" B.P.A. AC W/PUNCH "BC-P00703 LS38973 MSI 18"	387+51.9	0.00
BC-P00704	141437.95	1290712.83	3-1/4" B.P.A. AC W/PUNCH "BC-P00704 LS38973 MSI 18"	391+55.2	0.00

#### LEGEND

Ah STATION AHEAD  
Bk STATION BACK  
L.C.R. LAND CORNER RECORD  
B.P.A. BONNEVILLE POWER ADMINISTRATION  
U.S.D.O.E. UNITED STATES DEPARTMENT OF ENERGY  
A.F.N. AUDITOR'S FILE NUMBER  
AS XX B.P.A. TOWER SERIAL NUMBER  
 $\frac{X}{X}$  B.P.A. OPERATING TOWER NUMBERS

XXX-XX  TRANSMISSION LINE MILE MARKER  
WITH STATION PER B.P.A. MILE MAPS

 CONTROL MONUMENT AS NOTED

 FOUND MONUMENT AS NOTED

 SET 3-1/4" ALUMINUM CAP ON 5/8" IRON ROD.

 FOUND MONUMENT AT TOWER

 B.P.A. ROTATED STEEL TOWER

ACQUISITION SURVEY LINE

B.P.A. TRANSMISSION LINE RIGHT-OF-WAY (FEE)

B.P.A. TRANSMISSION LINE RIGHT-OF-WAY (EASEMENT)

TOWNSHIP AND RANGE LINE

SECTION LINE


QUARTER SECTION LINE

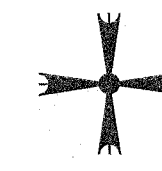
SIXTEENTH SECTION LINE


PARCEL DATA PER SKAMANIA COUNTY  
GEOGRAPHIC INFORMATION SYSTEM (G.I.S.)

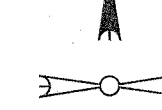
#### SURVEY REFERENCES

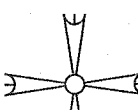
REFERENCE B.P.A. PLAT MAP 2990, 2991 & 2992  
REFERENCE B.P.A. MILE MAP 1062, 1178, 125906 & 125907  
(6) B.P.A. SERIAL NO. 2990  
(7) B.P.A. SERIAL NO. 2991  
(8) BK 1 PG 239

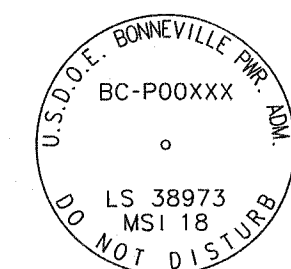
 CENTER OF SECTION



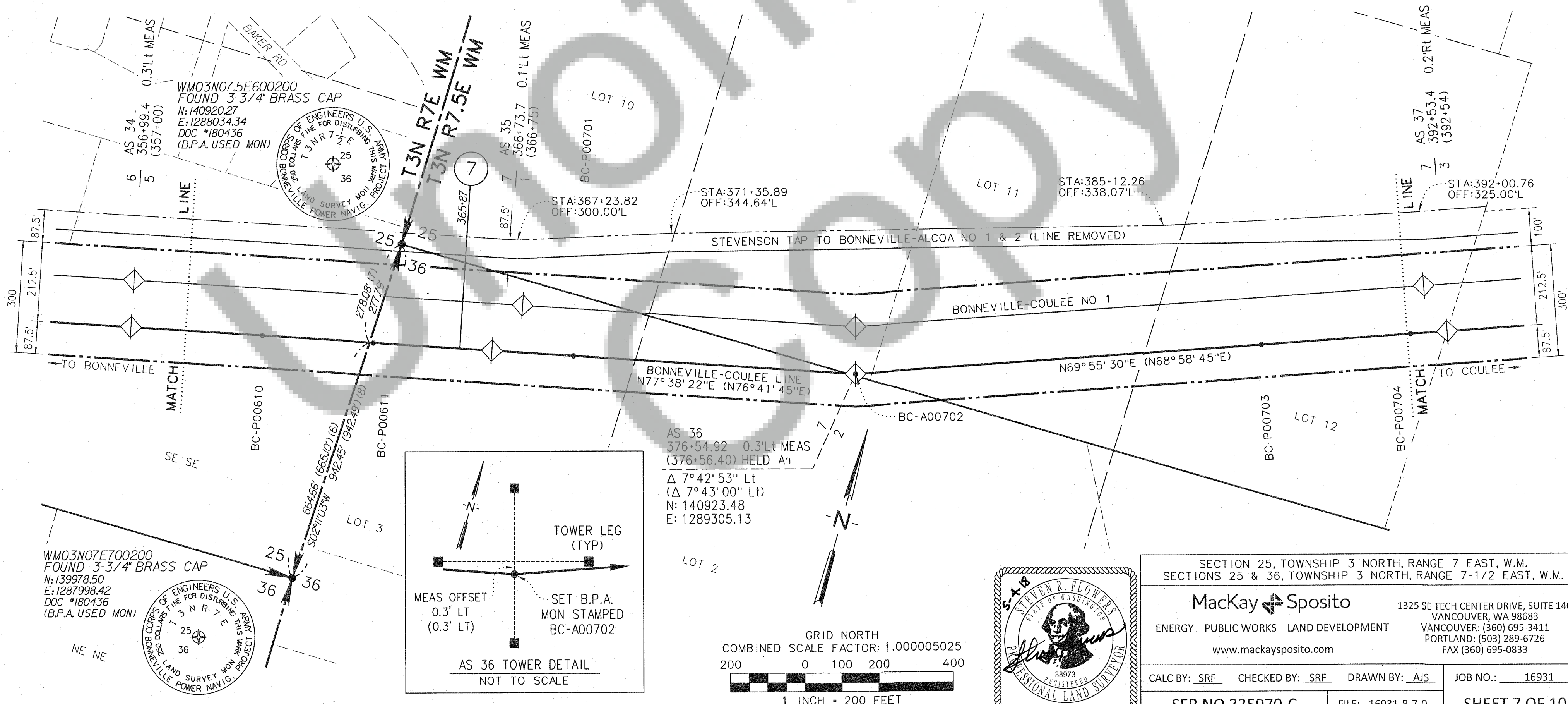
 FOUND PLSS CORNER MONUMENT



 CALCULATED PLSS CORNER



SET B.P.A. MONUMENT  
DETAIL  
(STAMPING VARIES BY POINT NUMBER)





# RECORD OF SURVEY

FOR THE BONNEVILLE POWER ADMINISTRATION  
BONNEVILLE-COULEE LINE RIGHT-OF-WAY MILES 6 THRU 9  
AND STEVENSON TAP TO BONNEVILLE-ALCOA No. 1 & 2  
RIGHT-OF-WAY MILES 7 THRU 9

IN GOVERNMENT LOT 12, THE SOUTHWEST 1/4 OF THE SOUTHEAST 1/4, THE NORTHWEST 1/4 OF THE SOUTHEAST 1/4, THE SOUTHEAST 1/4 OF THE SOUTHEAST 1/4, AND THE NORTHEAST 1/4 OF THE SOUTHEAST 1/4 OF SECTION 25, T3N, R7-1/2E, W.M.: SKAMANIA COUNTY, WASHINGTON

## BASIS OF BEARINGS

BEARINGS AND COORDINATES SHOWN ARE GRID, BASED ON THE WASHINGTON STATE PLANE COORDINATE SYSTEM, SOUTH ZONE (4602), NAD83(2011)(EPOCH:2010.0), US SURVEY FOOT. DISTANCES SHOWN HEREON ARE GROUND DISTANCES, TO CONVERT DISTANCES SHOWN TO GRID, MULTIPLY BY 1.000005025

MONUMENT TABLE

POINT ID	GRID NORTHING	GRID EASTING	MONUMENT DESCRIPTION	STATION	OFFSET
BC-P00704	141437.95	1290712.83	3-1/4" B.P.A. AC W/PUNCH "BC-P00704 LS38973 MSI 18"	391+55.2	0.00
BC-P00705	141845.90	1291829.06	3-1/4" B.P.A. AC W/PUNCH "BC-P00705 LS38973 MSI 18"	403+43.6	0.00
BC-P00706	142003.85	1292261.30	3-1/4" B.P.A. AC W/PUNCH "BC-P00706 LS38973 MSI 18"	408+03.8	0.00
BC-P00707	142102.25	1292530.53	3-1/4" B.P.A. AC W/PUNCH "BC-P00707 LS38973 MSI 18"	410+90.4	0.00
BC-P00708	142349.99	1293208.51	3-1/4" B.P.A. AC W/PUNCH "BC-P00708 LS38973 MSI 18"	418+12.2	0.00
BC-P00801	142602.06	1293898.30	3-1/4" B.P.A. AC W/PUNCH "BC-P00801 LS38973 MSI 18"	425+46.6	0.00

## LEGEND

- Ah STATION AHEAD  
Bk STATION BACK  
L.C.R. LAND CORNER RECORD  
B.P.A. BONNEVILLE POWER ADMINISTRATION  
U.S.D.O.E. UNITED STATES DEPARTMENT OF ENERGY  
A.F.N. AUDITOR'S FILE NUMBER  
AS XX B.P.A. TOWER SERIAL NUMBER  
 $\frac{X}{X}$  B.P.A. OPERATING TOWER NUMBERS

XXX\*XX  TRANSMISSION LINE MILE MARKER WITH STATION PER B.P.A. MILE MAPS

 CONTROL MONUMENT AS NOTED

 FOUND MONUMENT AS NOTED

 SET 3-1/4" ALUMINUM CAP ON 5/8" IRON ROD.

 FOUND MONUMENT AT TOWER

 B.P.A. ROTATED STEEL TOWER

ACQUISITION SURVEY LINE

B.P.A. TRANSMISSION LINE RIGHT-OF-WAY (FEE)

B.P.A. TRANSMISSION LINE RIGHT-OF-WAY (EASEMENT)

TOWNSHIP AND RANGE LINE

SECTION LINE

QUARTER SECTION LINE

SIXTEENTH SECTION LINE


PARCEL DATA PER SKAMANIA COUNTY GEOGRAPHIC INFORMATION SYSTEM (G.I.S.)

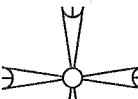
## SURVEY REFERENCES

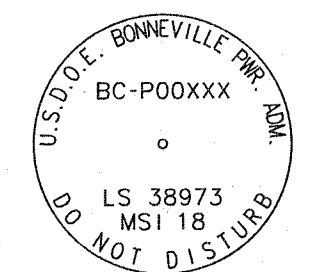
REFERENCE B.P.A. PLAT MAP 2992

REFERENCE B.P.A. MILE MAP 1178, 1179 & 125907

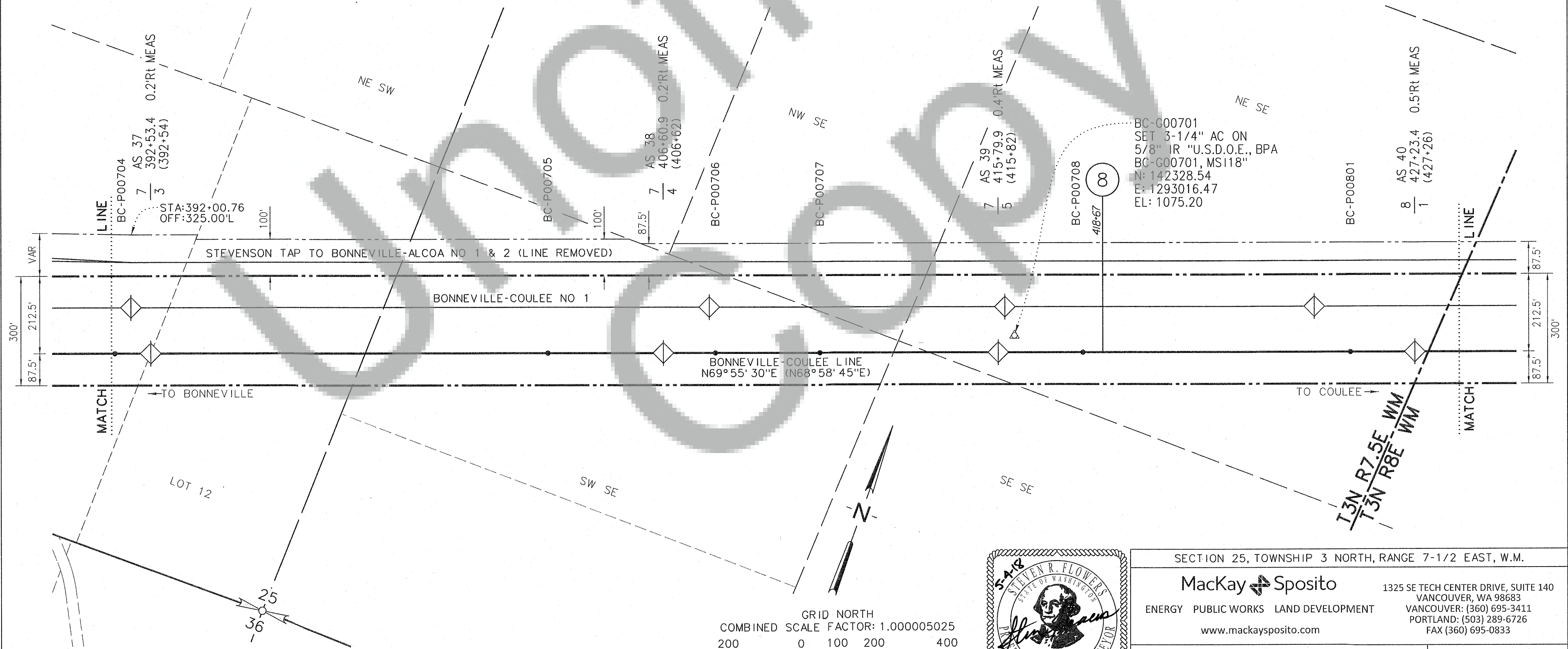
 CENTER OF SECTION

 FOUND PLSS CORNER MONUMENT

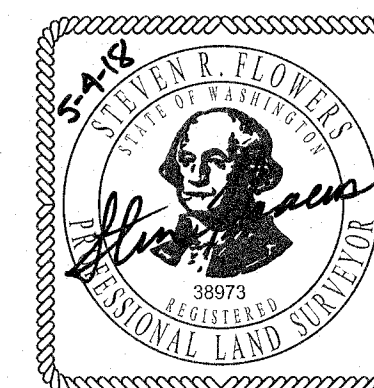
 CALCULATED PLSS CORNER



SET B.P.A. MONUMENT  
DETAIL  
(STAMPING VARIES BY POINT NUMBER)



GRID NORTH  
COMBINED SCALE FACTOR: 1.000005025  
200 0 100 200 400  
1 INCH = 200 FEET



SECTION 25, TOWNSHIP 3 NORTH, RANGE 7-1/2 EAST, W.M.

MacKay & Spósito

ENERGY PUBLIC WORKS LAND DEVELOPMENT

www.mackaysposito.com

1325 SE TECH CENTER DRIVE, SUITE 140  
VANCOUVER, WA 98683  
VANCOUVER: (360) 695-3411  
PORTLAND: (503) 289-6726  
FAX (360) 695-0833

CALC BY: SRF CHECKED BY: SRF DRAWN BY: AJS JOB NO.: 16931

SER NO 335970-C

FILE: 16931-R-8-0

SHEET 8 OF 10



# RECORD OF SURVEY

## FOR THE BONNEVILLE POWER ADMINISTRATION

### BONNEVILLE-COULEE LINE RIGHT-OF-WAY MILES 6 THRU 9 AND STEVENSON TAP TO BONNEVILLE-ALCOA No. 1 & 2 RIGHT-OF-WAY MILES 7 THRU 9

IN THE NORTHEAST 1/4 OF THE SOUTHEAST 1/4 OF SECTION 25, T3N, R7-1/2E, W.M.:

IN GOVERNMENT LOT 3, THE NORTHEAST 1/4 OF THE SOUTHWEST 1/4, THE SOUTHEAST 1/4  
OF THE NORTHWEST 1/4, THE SOUTHWEST 1/4 OF THE NORTHEAST 1/4 OF SECTION 30,  
T3N, R8E, W.M.: SKAMANIA COUNTY, WASHINGTON

#### BASIS OF BEARINGS

BEARINGS AND COORDINATES SHOWN ARE GRID, BASED ON THE WASHINGTON STATE  
PLANE COORDINATE SYSTEM, SOUTH ZONE (4602), NAD83(2011)(EPOCH:2010.0),  
US SURVEY FOOT. DISTANCES SHOWN HEREON ARE GROUND DISTANCES, TO CONVERT  
DISTANCES SHOWN TO GRID, MULTIPLY BY 1.000005025

MONUMENT TABLE

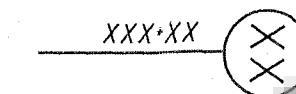
POINT ID	GRID NORTHING	GRID EASTING	MONUMENT DESCRIPTION	STATION	OFFSET
BC-P00802	142804.76	1294452.85	3-1/4" B.P.A. AC W/PUNCH "BC-P00802 LS38973 MSI 18"	431+37.1	0.00
BC-P00803	143098.99	1295257.97	3-1/4" B.P.A. AC W/PUNCH "BC-P00803 LS38973 MSI 18"	439+94.3	0.00
BC-P00804	143295.14	1295794.66	3-1/4" B.P.A. AC W/PUNCH "BC-P00804 LS38973 MSI 18"	445+65.7	0.00
BC-P00805	143561.08	1296522.37	3-1/4" B.P.A. AC W/PUNCH "BC-P00805 LS38973 MSI 18"	453+40.5	0.00
BC-P00806	143931.48	1297535.93	3-1/4" B.P.A. AC W/PUNCH "BC-P00806 LS38973 MSI 18"	464+19.6	0.00

#### LEGEND

Ah STATION AHEAD  
Bk STATION BACK  
L.C.R. LAND CORNER RECORD  
B.P.A. BONNEVILLE POWER ADMINISTRATION  
U.S.D.O.E. UNITED STATES DEPARTMENT OF ENERGY  
A.F.N. AUDITOR'S FILE NUMBER  
AS XX B.P.A. TOWER SERIAL NUMBER  
X  
X B.P.A. OPERATING TOWER NUMBERS

#### SURVEY REFERENCES

REFERENCE B.P.A. PLAT MAP 2993  
REFERENCE B.P.A. MILE MAP 1179 & 125908  
(9) B.P.A. SERIAL NO. 2993  
(10) BK 2 PG 112



TRANSMISSION LINE MILE MARKER  
WITH STATION PER B.P.A. MILE MAPS



CONTROL MONUMENT AS NOTED



FOUND MONUMENT AS NOTED



SET 3-1/4" ALUMINUM CAP ON 5/8" IRON ROD.



FOUND MONUMENT AT TOWER



B.P.A. ROTATED STEEL TOWER



ACQUISITION SURVEY LINE



B.P.A. TRANSMISSION LINE RIGHT-OF-WAY (FEE)



B.P.A. TRANSMISSION LINE RIGHT-OF-WAY (EASEMENT)



TOWNSHIP AND RANGE LINE



SECTION LINE



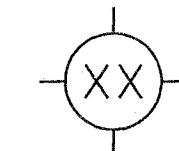
QUARTER SECTION LINE



SIXTEENTH SECTION LINE



PARCEL DATA PER SKAMANIA COUNTY  
GEOGRAPHIC INFORMATION SYSTEM (G.I.S.)



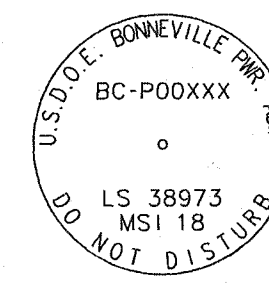
CENTER OF SECTION



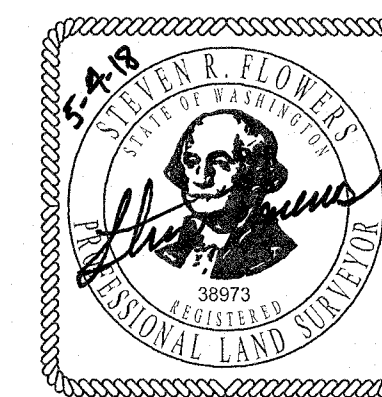
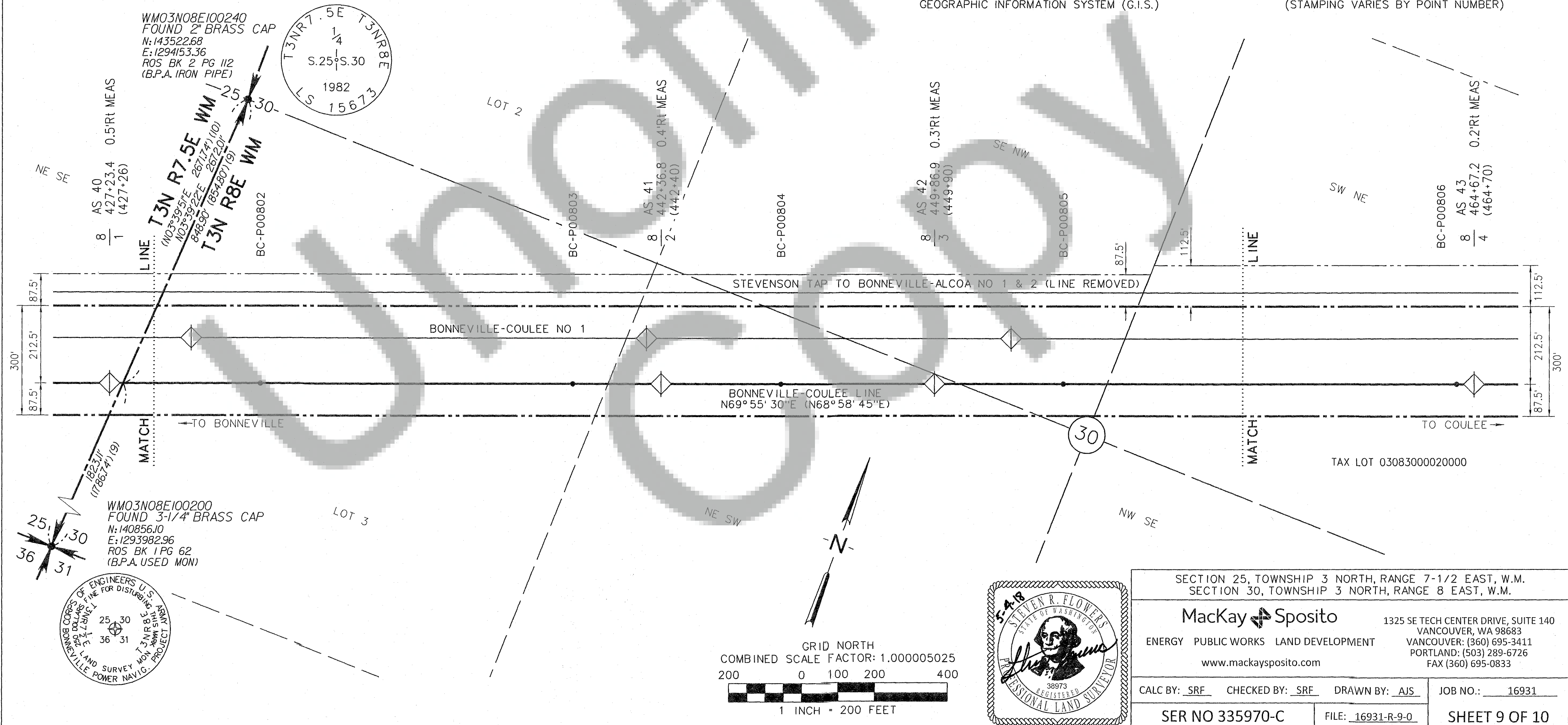
FOUND PLSS CORNER MONUMENT



CALCULATED PLSS CORNER



SET B.P.A. MONUMENT  
DETAIL  
(STAMPING VARIES BY POINT NUMBER)



SECTION 25, TOWNSHIP 3 NORTH, RANGE 7-1/2 EAST, W.M. SECTION 30, TOWNSHIP 3 NORTH, RANGE 8 EAST, W.M.	
<b>MacKay Sposito</b> ENERGY PUBLIC WORKS LAND DEVELOPMENT www.mackaysposito.com	
1325 SE TECH CENTER DRIVE, SUITE 140 VANCOUVER, WA 98683 VANCOUVER: (360) 695-3411 PORTLAND: (503) 289-6726 FAX (360) 695-0833	
CALC BY: SRF	CHECKED BY: SRF
DRAWN BY: AJS	JOB NO.: 16931
SER NO 335970-C	FILE: 16931-R-9-0
SHEET 9 OF 10	



# RECORD OF SURVEY

FOR THE BONNEVILLE POWER ADMINISTRATION  
BONNEVILLE-COULEE LINE RIGHT-OF-WAY MILES 6 THRU 9  
AND STEVENSON TAP TO BONNEVILLE-ALCOA No. 1 & 2  
RIGHT-OF-WAY MILES 7 THRU 9

THE SOUTHEAST 1/4 OF THE NORTHWEST 1/4, THE SOUTHWEST 1/4 OF THE NORTHEAST 1/4,  
THE SOUTHEAST 1/4 OF THE NORTHEAST 1/4, AND THE NORTHEAST 1/4 OF THE NORTHEAST 1/4  
OF SECTION 30, T3N, R8E, W.M.; SKAMANIA COUNTY, WASHINGTON

## BASIS OF BEARINGS

BEARINGS AND COORDINATES SHOWN ARE GRID, BASED ON THE WASHINGTON STATE  
PLANE COORDINATE SYSTEM, SOUTH ZONE (4602), NAD83(2011)(EPOCH:2010.0),  
US SURVEY FOOT. DISTANCES SHOWN HEREON ARE GROUND DISTANCES, TO CONVERT  
DISTANCES SHOWN TO GRID, MULTIPLY BY 1.000005025


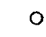

MONUMENT TABLE

POINT ID	GRID NORTHING	GRID EASTING	MONUMENT DESCRIPTION	STATION	OFFSET
BC-P00805	143561.08	1296522.37	3-1/4" B.P.A. AC W/PUNCH "BC-P00805 LS38973 MSI 18"	453+40.5	0.00
BC-P00806	143931.48	1297535.93	3-1/4" B.P.A. AC W/PUNCH "BC-P00806 LS38973 MSI 18"	464+19.6	0.00
BC-P00807	144033.41	1297814.77	3-1/4" B.P.A. AC W/PUNCH "BC-P00807 LS38973 MSI 18"	467+16.5	0.00
BC-P00901	144294.82	1298530.16	3-1/4" B.P.A. AC W/PUNCH "BC-P00901 LS38973 MSI 18"	474+78.1	0.00
BC-A00902	144423.66	1298882.67	3-1/4" B.P.A. AC W/PUNCH "BC-A00902 LS38973 MSI 18"	478+56.90	0.00

## LEGEND

Ah STATION AHEAD  
Bk STATION BACK  
L.C.R. LAND CORNER RECORD  
B.P.A. BONNEVILLE POWER ADMINISTRATION  
U.S.D.O.E. UNITED STATES DEPARTMENT OF ENERGY  
A.F.N. AUDITOR'S FILE NUMBER  
AS XX B.P.A. TOWER SERIAL NUMBER  
 $\frac{X}{X}$  B.P.A. OPERATING TOWER NUMBERS

XXX-XX  TRANSMISSION LINE MILE MARKER  
WITH STATION PER B.P.A. MILE MAPS

 CONTROL MONUMENT AS NOTED  
 FOUND MONUMENT AS NOTED  
 SET 3-1/4" ALUMINUM CAP ON 5/8" IRON ROD.

 FOUND MONUMENT AT TOWER

 B.P.A. ROTATED STEEL TOWER

ACQUISITION SURVEY LINE

B.P.A. TRANSMISSION LINE RIGHT-OF-WAY (FEE)

B.P.A. TRANSMISSION LINE RIGHT-OF-WAY (EASEMENT)

TOWNSHIP AND RANGE LINE

SECTION LINE

QUARTER SECTION LINE

SIXTEENTH SECTION LINE

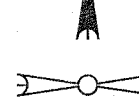
PARCEL DATA PER SKAMANIA COUNTY  
GEOGRAPHIC INFORMATION SYSTEM (G.I.S.)

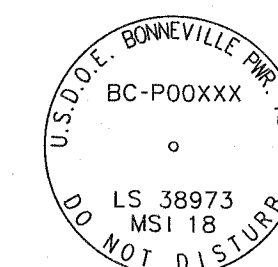
## SURVEY REFERENCES

REFERENCE B.P.A. PLAT MAP 2993  
REFERENCE B.P.A. MILE MAP 1179, 1180 & 125908  
(9) B.P.A. SERIAL NO. 2993  
(10) BK 2 PG 112  
(11) B.P.A. SERIAL NO. 125908

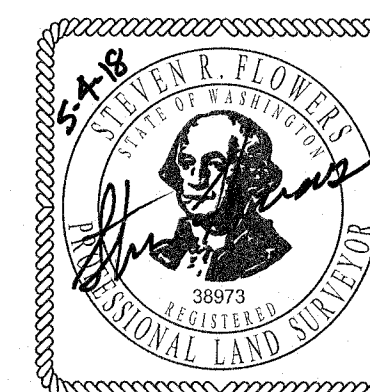
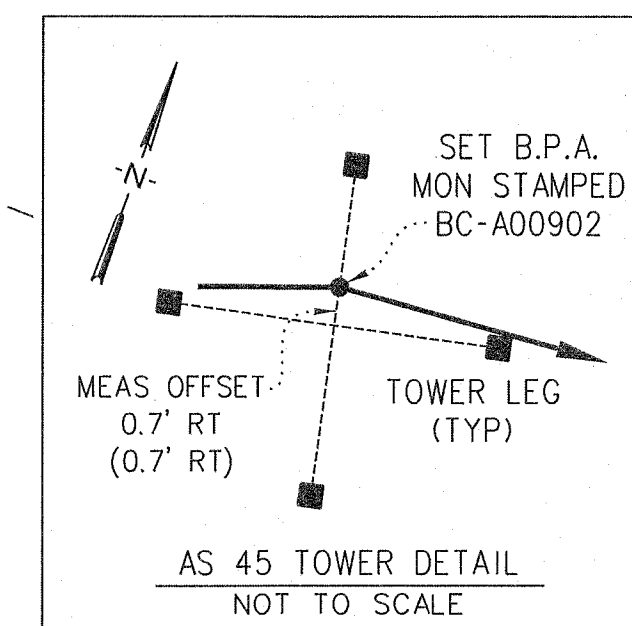
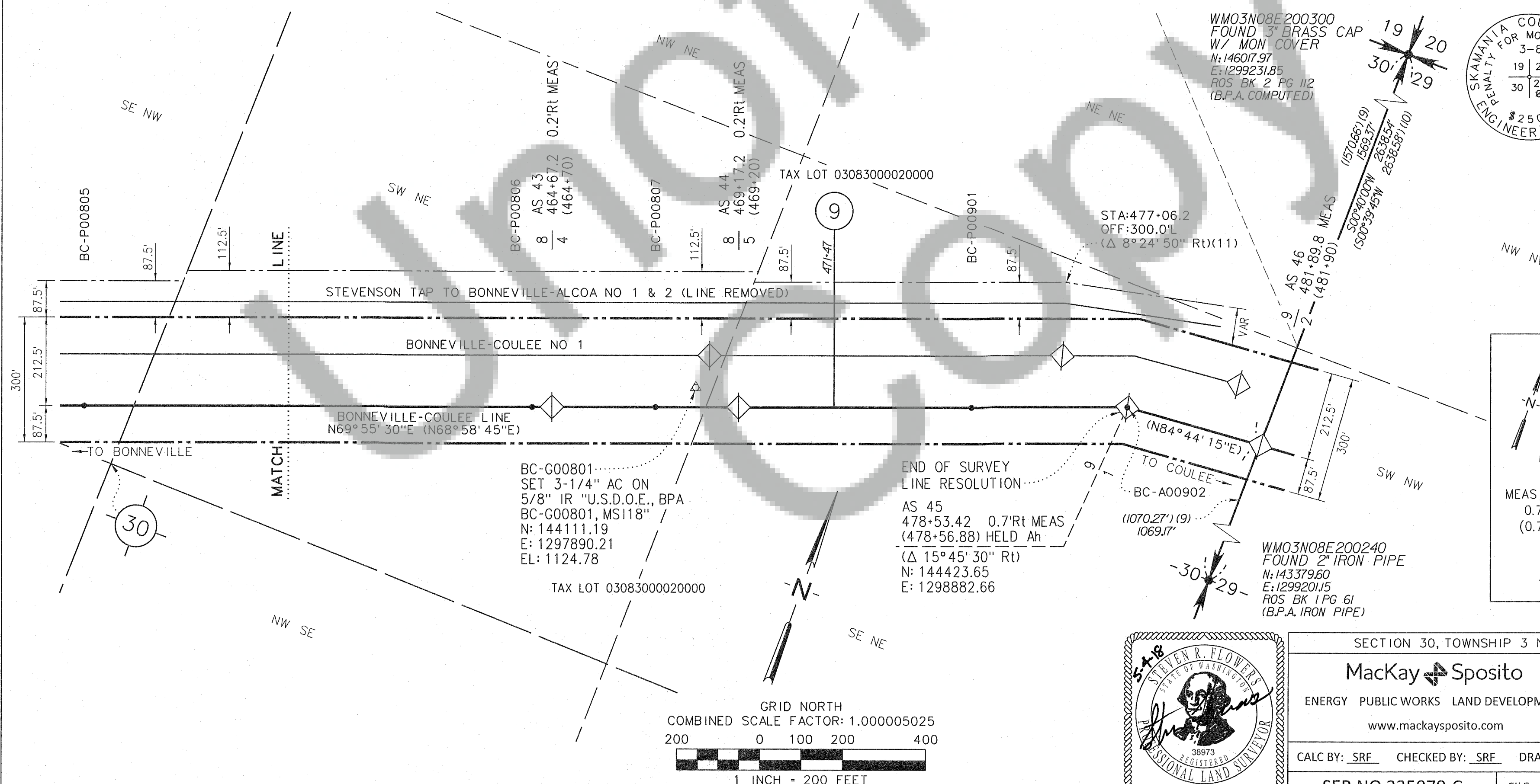
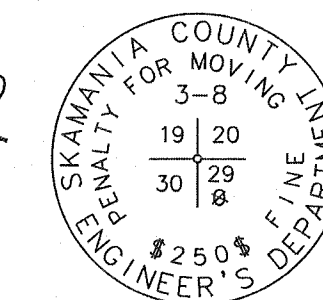
 CENTER OF SECTION

 FOUND PLSS CORNER MONUMENT

 CALCULATED PLSS CORNER



SET B.P.A. MONUMENT  
DETAIL  
(STAMPING VARIES BY POINT NUMBER)



SECTION 30, TOWNSHIP 3 NORTH, RANGE 8 EAST, W.M.

Mackay & Spósito

ENERGY PUBLIC WORKS LAND DEVELOPMENT

www.mackaysposito.com

1325 SE TECH CENTER DRIVE, SUITE 140  
VANCOUVER, WA 98683  
VANCOUVER: (360) 695-3411  
PORTLAND: (503) 289-6726  
FAX (360) 695-0833

CALC BY: SRF CHECKED BY: SRF DRAWN BY: AJS

JOB NO.: 16931

SER NO 335970-C

FILE: 16931-R-10-0

SHEET 10 OF 10