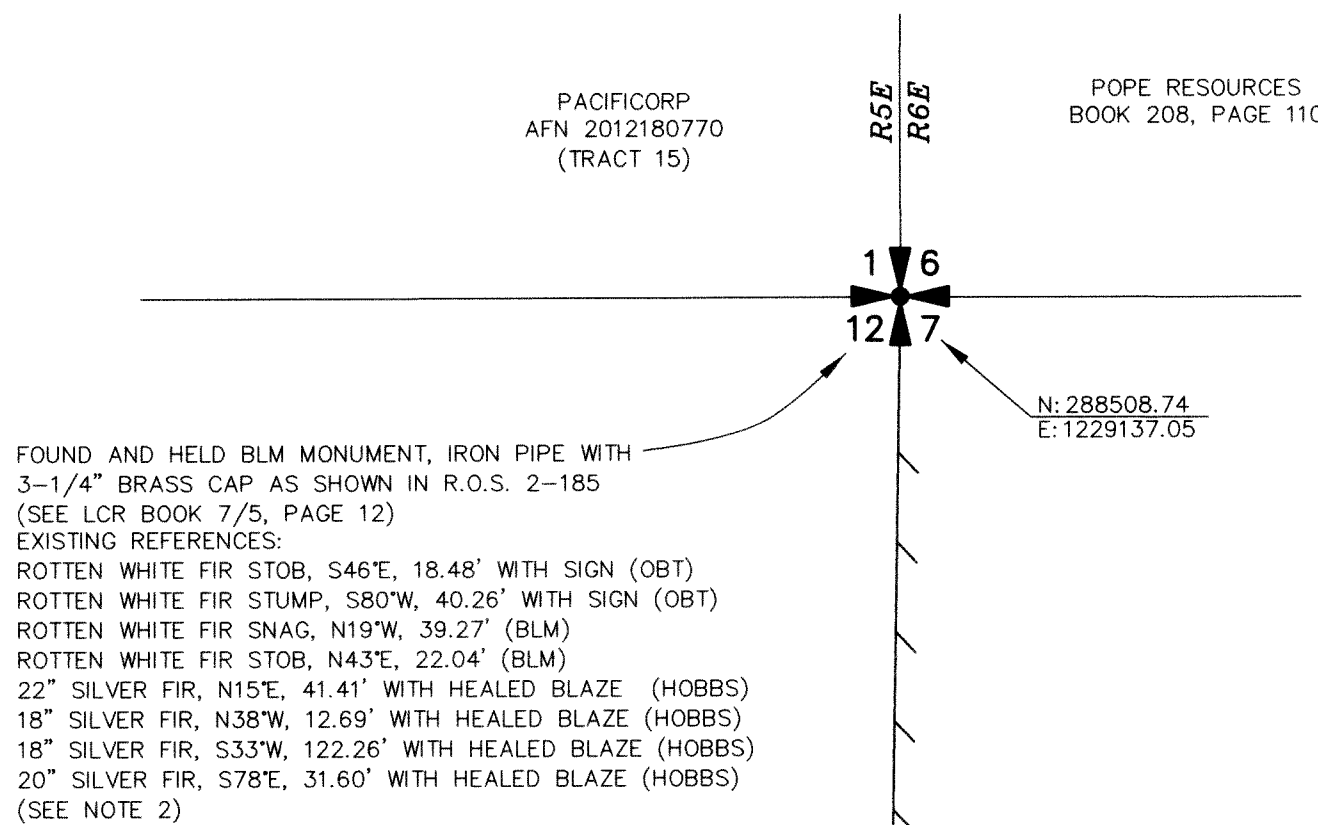


NARRATIVE

THE PURPOSE OF THIS SURVEY WAS TO POST THE WEST LINE OF GOVERNMENT LOTS 1 & 2 OF THE "POPE RESOURCES TRACT" CITED FOR LOGGING PURPOSES. FIELD WORK CONSISTED OF COLLECTING "RTK GPS POINTS" NEAR THE WEST QUARTER CORNER AND NORTHWEST CORNER OF SECTION 7. THE GPS POINTS WERE COLLECTED ON "WASHINGTON STATE PLANE COORDINATE SYSTEM, SOUTH ZONE" (NAD 83/2011), WHICH WAS THE BASIS OF BEARING FOR THIS SURVEY. A RANDOM TRAVERSE WAS RAN FROM AND CLOSED ON SAID GPS POINTS. MONUMENTS SHOWN WERE TIED RADIALLY FROM SAID TRAVERSE, NO NEW MONUMENTS WERE ESTABLISHED DURING THIS SURVEY. DISTANCES SHOWN ARE GRID DISTANCES, TO OBTAIN GROUND DISTANCES, DIVIDE DISTANCES SHOWN BY THE COMBINED SCALE FACTOR OF 0.99979871.

DEED REFERENCE
SPECIAL WARRANTY DEED
PLUM CREEK TIMBERLANDS, L.P.
TO
POPE RESOURCES
BOOK 208, PAGE 110
(3/30/2001)

RECORD OF SURVEY
OF THE WEST LINE OF GOV'T
LOTS 1 & 2 IN THE NW 1/4 OF
SECTION 7, T7N, R6E, W.M.
SKAMANIA COUNTY, WA.



SURVEY REFERENCE
1) R.O.S. 2-185

LEGEND:

● INDICATES MONUMENT FOUND AS NOTED

() INDICATES RECORD INFORMATION PER SURVEY REFERENCE NUMBER

R.O.S. RECORD OF SURVEY

LCR LAND CORNER RECORD

AFN AUDITOR'S FILE NUMBER

GLO GENERAL LAND OFFICE

BLM BUREAU OF LAND MANAGEMENT

OBT ORIGINAL BEARING TREE

GOV'T GOVERNMENT

INDICATES LINE MARKED WITH 1/2" x 72" FIBER GLASS RODS WITH RED AND WHITE RIBBON. TREES ALONG BOTH SIDES OF LINE PAINTED AND BLAZED WITH BLUE PAINT. LINE TREES WERE MARKED WITH 3 NOTCHES ON EACH SIDE WITH NO PAINT.

NOTE 1
REMAINING CARSONITE POST SET IN R.O.S. 2-185 THAT WERE FOUND WERE VERIFIED AND UTILIZED IN THIS SURVEY.

NOTE 2
DISTANCES FOR REFERENCES MEASURED TO EXISTING NAIL IN FACE OF TREE.

NOTE 3
ADDED NAILS TO SIDE CENTER OF REFERENCES TO MEASURE TO. NAILS IN FACE OF TREE WERE COVERED BY THE HEALED BLAZES.

NOTE 4
COORDINATES LISTED ARE GRID COORDINATES, SEE NARRATIVE.

FOUND AND HELD BLM MONUMENT, IRON PIPE WITH 3-1/4" BRASS CAP AS SHOWN IN R.O.S. 2-185 (SEE LCR BOOK 7/5, PAGE 41)
EXISTING REFERENCES:
12" SILVER FIR, S74°E, 8.83' WITH HEALED BLAZE (HOBBS)
14" SILVER FIR, N24°W, 20.08' WITH HEALED BLAZE (HOBBS)
(SEE NOTE 3)

N: 285864.56
E: 1229097.21

S 02°11'03" W
57.24'

N: 285807.36
E: 1229095.03

PACIFICORP
AFN 2012180770
(TRACT 44)

FOUND AND HELD REFERENCE MONUMENT TO GLO LINE TREE, IRON PIPE WITH 2-1/2" BRASS CAP AS SHOWN IN R.O.S. 2-185, LINE TREE IS A 60" FIR STUMP THAT BEARS SOUTH, 12' FROM HELD MONUMENT
(SEE LCR BOOK 7/5, PAGE 34)
EXISTING REFERENCES:
8" SILVER FIR, SOUTH, 7.08' WITH HEALED BLAZE
9" SILVER FIR, NORTH, 12.08' WITH HEALED BLAZE
(SEE NOTE 2)

AUDITOR'S CERTIFICATE

FILED FOR RECORD THIS 17th DAY OF August 2017 AT
2:14 P.M. IN BOOK — OF SURVEYS AT PAGE —
AT THE REQUEST OF BROWN SURVEYING, PLLC.
AFN # 2017001725
Robert J. Waymire
DEPUTY COUNTY AUDITOR

SURVEYOR'S CERTIFICATE

THIS MAP CORRECTLY REPRESENTS A SURVEY MADE BY ME OR UNDER MY DIRECTION IN CONFORMANCE WITH THE REQUIREMENTS OF THE SURVEY RECORDING ACT AT THE REQUEST OF OLYMPIC RESOURCE MANAGEMENT IN JULY, 2017.

Gregory A. Brown 8-11-2017
GREGORY A. BROWN, PROFESSIONAL LAND SURVEYOR, LS# 42425

SCALE: 1"=200'
JOB NO. 17-025
DATE: 8/8/2017
CALC BY: GAB
DRAWN BY: GAB
CHECKED BY: EVB
SHEET 1 OF 1

BROWN
SURVEYING PLLC
PO BOX 414
AMBOY, WA 98601
360-600-0846
ebrownsurveying@gmail.com

BROWN SURVEYING, PLLC MAKES NO WARRANTIES AS TO MATTERS OF UNWRITTEN TITLE SUCH AS ADVERSE POSSESSION, ACQUIESCENCE, ESTOPPLE, ETC.

A FIELD TRAVERSE WAS PERFORMED USING A NIKON NIVO 3.0C THREE SECOND TOTAL STATION WITH TDS DATA COLLECTION SYSTEM. THE FIELD TRAVERSE MET THE MINIMUM STANDARDS FOR SURVEYS AS DESIGNATED IN WAC 332-130-090. ALL CORNERS NOTED AS FOUND WERE VISITED ON 7/6 & 7/10/2017.