

RECORD OF SURVEY

LOCATED IN THE SOUTHWEST 1/4, SOUTHEAST 1/4, AND NORTHEAST 1/4
OF SECTION 29, TOWNSHIP 3 NORTH, RANGE 8 EAST, WILLAMETTE MERIDIAN,
SKAMANIA COUNTY, WASHINGTON

APRIL 21, 2017
SHEET 2 OF 6

LEGEND

- FOUND 3"x3" CONCRETE MONUMENT, UNKNOWN ORIGIN; AS NOTED; TIED AT OUTSIDE CENTER EDGE
- DENOTES FOUND MONUMENT AS NOTED
- ▲ AKS CONTROL MONUMENT SET 1/2" IR W/PC INSCRIBED "AKS ENGR. CONTROL" (SEE SHEET 4 FOR TABLE)
- ▲ AKS CONTROL MONUMENT SET MAG NAIL IN ASPHALT (SEE SHEET 4 FOR TABLE)
- △ DENOTES FOUND WSDOT CONTROL MONUMENT AS NOTED (SEE SHEET 4 FOR TABLE)
- △ FOUND OR CALCULATED PUBLIC LAND SURVEY SYSTEM CORNER AS NOTED

REFERENCES

- (1) RECORD INFORMATION PER WSDOT PLAN SR14 STEVENSON TO WIND RIVER CONTRACT NUMBER 1315
- (2) RECORD INFORMATION PER COUNTY ENGINEERS DRAWING CRP NO. 69-20 WIND RIVER ROAD COUNTY ROAD NUMBER 2135
- (3) RECORD INFORMATION PER COUNTY ENGINEERS DRAWING CRP NO. 60- SPRAGUE LANDING AND SLIVER ROADS
- (4) RECORD INFORMATION PER PATRICK ANDERSEN SHORT PLAT (AFN 107282)
- (5) RECORD INFORMATION PER CRP 74-26 BOOK 1 SURVEY PAGE 61 (AFN 79988)
- (6) RECORD INFORMATION PER BOOK 1 SURVEY PAGE 221 (AFN 90446)

- IP IR IRON PIPE
- W/PC WITH A RED PLASTIC CAP
- W/PC WITH A YELLOW PLASTIC CAP
- AFN AUDITOR'S FILE NUMBER PER SKAMANIA COUNTY RECORDS
- CRP COUNTY ROAD PROJECT PER SKAMANIA COUNTY RECORDS
- ROW RIGHT-OF-WAY
- USCE UNITED STATES ARMY CORPS OF ENGINEERS
- SR14 STATE ROUTE 14
- WR WIND RIVER ROAD
- SLR SPRAGUE LANDING ROAD
- MON MONUMENT (SEE SHEET 6 FOR TABLE)
- WSDOT WASHINGTON STATE DEPARTMENT OF TRANSPORTATION

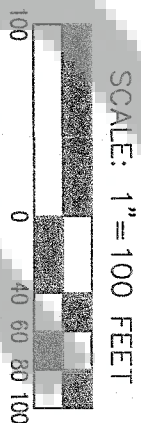
AFN 2014-000866

AFN 2006-161986

AFN 2016-00135

AFN 2016-002654

SEE SHEET 3



CURVE	RADIUS	DELTA	LENGTH	CHORD
C1	716.30' (716.3') 1	180°03' (180°) 1	226.50' (226.5') 1	N22°03'23"E 225.56'
C2	955.00' (955.0') 1	24°47'45" (24°48') 1	413.30' (413.3') 1	N43°30'48"E 410.08'
C3	955.00' (955.0') 1	29°04'00" (29°04'00") 1	484.48' (484.48') 1	N7°02'41"E 479.30'
C4	1910.00' (1910.0') 1	11°35'00" (11°35'00") 1	366.14' (366.14') 1	N7°11'11"E 365.48'
C11	580.00' (573.0') 1	32°07'04" (32°32'00") 1	325.12' (325.36') 1	N68°55'09"E 320.86'

SECTION BREAKDOWN DESCRIPTION

THIS SECTION 29 BREAKDOWN WAS ESTABLISHED FROM BY RECORD INFORMATION AND FOUND MONUMENTS PER SKAMANIA COUNTY CONTROL PROJECT CRP 74-26 SURVEY (AFN 79988), SURVEY BOOK 1 PAGE 221 (AFN 90446), AND PATRICK ANDERSEN SHORT PLAT (AFN 107282), THE COUNTY MONUMENT AT THE CENTER 1/4 SECTION 29 (MON 161) PER SURVEY AFN 79988 WAS HELD AND RECORD BEARINGS WERE ROTATED TO THE FOUND USE MONUMENT (MON 151) AT THE EAST 1/4 CORNER SECTION 29. SURVEY AFN 90446 CALLS THIS SET COUNTY MONUMENT AT THE CENTER 1/4 EAST 0.19' FROM THE TRUE POSITION. HOWEVER THE MONUMENT WAS HELD IN THIS SURVEY BECAUSE THE ROTATED RECORD BEARING AND DISTANCE AGREED WITH THE MONUMENT (MON 119) FOUND AT THE APPARENT C-S 1/16 CORNER PER AFN 90446. THE RECORD DISTANCES ALSO FIT AGREE WITH THE CALCULATED SOUTHWEST CORNER OF SECTION 29. THIS POSITION AGREES WITH WINNERS/REFERENCE MONUMENTS (MON 166 AND 165) SET PER SURVEY AFN 79988. THIS SURVEY'S MEASUREMENT TO THE USE MONUMENT AT THE EAST 1/4 SECTION 29 WAS SHORTER THAN RECORD BUT WAS WITHIN IN REASONABLE TOLERANCE.



WASHINGTON STATE
DEPARTMENT OF TRANSPORTATION
11018 NE 51ST CIRCLE
VANCOUVER, WA 98682
(360) 905-2000

4/26/2017

AKS ENGINEERING AND FORESTRY, LLC
9600 NE 126TH AVE
SUITE 2520
VANCOUVER, WA 98682
PHONE: 360.882.0419
FAX: 360.882.0426

ENGINEERING · PLANNING · SURVEYING
FORESTRY · LANDSCAPE ARCHITECTURE

JOB NAME: SR14 WIND RIVER HWY
JOB NUMBER: 3962-01
DRAWN BY: JDP
CHECKED BY: NSW/CAB
DRAWING NO.: 3962-01ROS

RECORD OF SURVEY

LOCATED IN THE SOUTHWEST 1/4, SOUTHEAST 1/4, AND NORTHEAST 1/4
OF SECTION 29, TOWNSHIP 3 NORTH, RANGE 8 EAST, WILLAMETTE MERIDIAN,
SKAMANIA COUNTY, WASHINGTON

APRIL 21, 2017
SHEET 3 OF 6

LEGEND

- FOUND 3"x3" CONCRETE MONUMENT; UNKNOWN ORIGIN; AS NOTED; TIED AT OUTSIDE CENTER EDGE
- DENOTES FOUND MONUMENT AS NOTED
- ▲ AKS CONTROL MONUMENT SET 1/2" IR, W/PPC INSCRIBED "AKS ENGR. CONTROL," (SEE SHEET 4 FOR TABLE)
- ▲ AKS CONTROL MONUMENT SET MAG NAIL IN ASPHALT (SEE SHEET 4 FOR TABLE)
- △ DENOTES FOUND WSDOT CONTROL MONUMENT AS NOTED (SEE SHEET 4 FOR TABLE)
- ✕ FOUND OR CALCULATED PUBLIC LAND SURVEY SYSTEM CORNER AS NOTED

REFERENCES

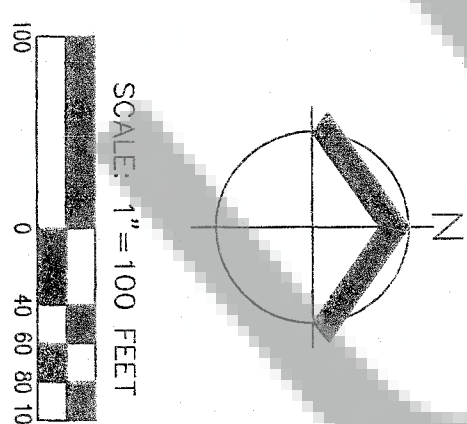
- (1) RECORD INFORMATION PER WSDOT PLAN SR14 STEVENSON TO WIND RIVER CONTRACT NUMBER 1315
- (2) RECORD INFORMATION PER COUNTY ENGINEERS DRAINING CRP NO. 69-20 WIND RIVER ROAD COUNTY ROAD NUMBER 2133
- (3) RECORD INFORMATION PER COUNTY ENGINEERS DRAINING CRP NO. 60- SPRAGUE LANDING AND SLAYER ROADS
- (4) RECORD INFORMATION PER PATRICIA ANDERSEN SHORT PLAT (AFN 107282)
- (5) RECORD INFORMATION PER CRP 74-26 BOOK 1 SURVEY'S PAGE 81 (AFN 79988)
- (6) RECORD INFORMATION PER BOOK 1 SURVEY'S PAGE 221 (AFN 90446)

- IP IRON PIPE
- IR IRON ROD
- W/PPC WITH A RED PLASTIC CAP
- W/PPC WITH A YELLOW PLASTIC CAP
- AKS AUDITOR'S FILE NUMBER PER SKAMANIA COUNTY RECORDS
- CRP SKAMANIA COUNTY PROJECT PER SKAMANIA COUNTY RECORDS
- ROW RIGHT-OF-WAY
- USCE UNITED STATES ARMY CORPS OF ENGINEERS
- SR14 STATE ROUTE 14
- WR WIND RIVER ROAD
- SLR SPRAGUE LANDING ROAD
- MON MONUMENT (SEE SHEET 6 FOR TABLE)
- WSDOT WASHINGTON STATE DEPARTMENT OF TRANSPORTATION

SEE SHEET 2

SEE SHEET 5

CURVE TABLE				
CURVE	RADIUS	DELTA	LENGTH	CHORD
C4	1910.00' (910.07')	11°35'00" (11°35'00")	386.14' (386.14')	N79°11'11"E 386.48'
C5	573.00' (573.07')	26°32'05" (26°32')	268.70' (268.71')	N86°49'43"E 266.24'
C6	573.00' (573.07')	34°22'39" (34°23')	343.80' (343.87')	N83°04'26"E 338.67'
C11	580.00' (573.07')	32°07'04" (32°32'00")	325.12' (325.36')	N68°55'09"E 320.88'
C12	818.60' (818.62')	16°12'24" (16°12'30")	231.55' (231.55')	N44°45'25"E 220.78'
C13	712.14' (716.37')	32°58'38" (32°55')	410.09' (411.46')	N53°09'02"E 404.44'
C14	1423.34' (1432.57')	20°31'18" (20°25')	510.16' (510.42')	N59°23'12"E 507.44'



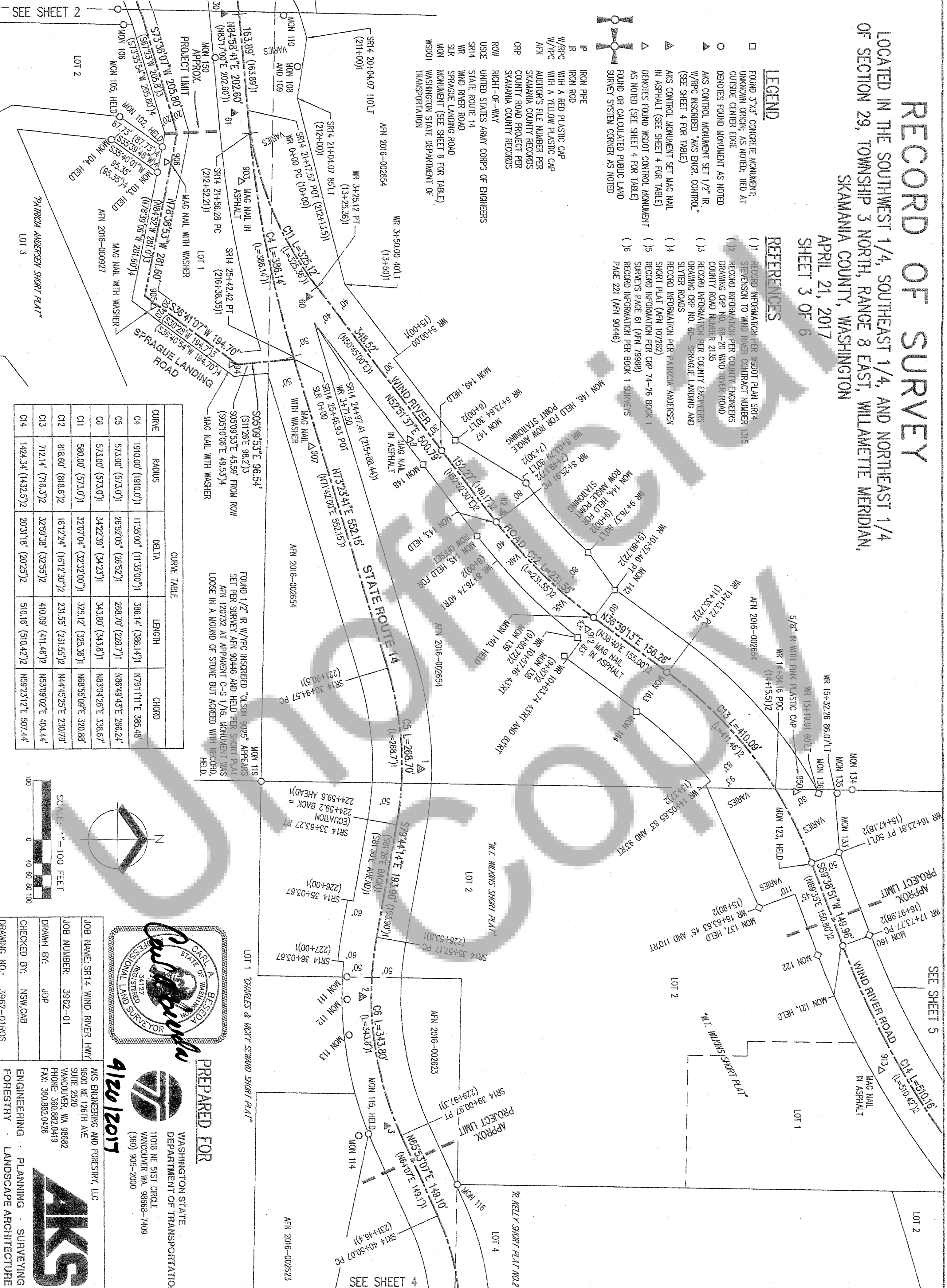
PREPARED FOR
WASHINGTON STATE
DEPARTMENT OF TRANSPORTATION
11018 NE 51ST ORCH
VANCOUVER, WA 98686-7409
(360) 905-2000

4/26/2017

JOB NAME: SR14 WIND RIVER HWY
JOB NUMBER: 3962-01
DRAWN BY: JDP
CHECKED BY: NSM,CAB
DRAWING NO.: 3962-01-ROS

AKS ENGINEERING AND FORESTRY, LLC
9800 NE 126TH AVE
SUITE 2520
VANCOUVER, WA 98682
PHONE: 360.882.0419
FAX: 360.882.0426

ENGINEERING • PLANNING • SURVEYING
FORESTRY • LANDSCAPE ARCHITECTURE





WASHINGTON STATE
DEPARTMENT OF TRANS
11018 NE 51ST CIRCLE
VANCOUVER WA. 98668-7409
(360) 905-2000

RECORD OF SURVEY

LOCATED IN THE SOUTHWEST 1/4, SOUTHEAST 1/4, AND NORTHEAST 1/4
OF SECTION 29, TOWNSHIP 3 NORTH, RANGE 8 EAST, WILLAMETTE MERIDIAN,
SKAMANIA COUNTY, WASHINGTON

APRIL 21, 2017
SHEET 5 OF 6

LEGEND

- FOUND 3"x3" CONCRETE MONUMENT;
UNKNOWN ORIGIN; AS NOTED; TIED AT
OUTSIDE CENTER EDGE
- DENOTES FOUND MONUMENT AS NOTED
- ▲ AKS CONTROL MONUMENT SET 1/2" IR
W/PC INSCRIBED "AKS ENGR. CONTROL"
(SEE SHEET 4 FOR TABLE)
- ▲ AKS CONTROL MONUMENT SET MAG NAIL
IN ASPHALT (SEE SHEET 4 FOR TABLE)
- △ DENOTES FOUND WSDOT CONTROL MONUMENT
AS NOTED (SEE SHEET 4 FOR TABLE)
- ⊕ FOUND OR CALCULATED PUBLIC LAND
SURVEY SYSTEM CORNER AS NOTED
- ⊕ IRON PIPE
- ⊕ IRON ROD
- ⊕ W/PC WITH A RED PLASTIC CAP
- ⊕ W/PC WITH A YELLOW PLASTIC CAP
- ⊕ AFN AUDITOR'S FILE NUMBER PER
SKAMANIA COUNTY RECORDS
- ⊕ CRP COUNTY ROAD PROJECT PER
SKAMANIA COUNTY RECORDS
- ⊕ ROW RIGHT-OF-WAY
- ⊕ USE UNITED STATES ARMY CORPS OF ENGINEERS
- ⊕ SR14 STATE ROUTE 14
- ⊕ WND WIND RIVER ROAD
- ⊕ SLR SPRAGUE LANDING ROAD
- ⊕ MON MONUMENT (SEE SHEET 6 FOR TABLE)
- ⊕ WASHINGTON STATE DEPARTMENT OF
TRANSPORTATION

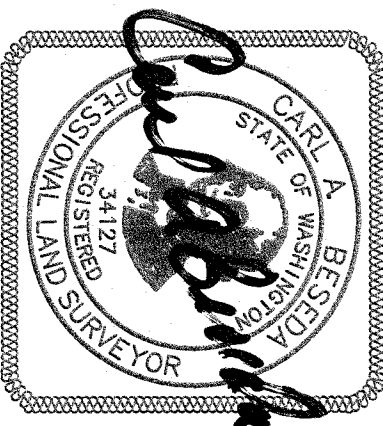
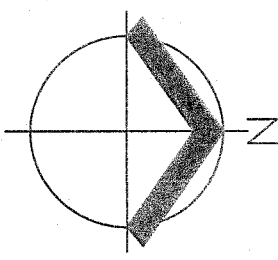
REFERENCES

- (1) RECORD INFORMATION PER WSDOT PLAN SR14
STEVENSON TO WIND RIVER CONTRACT NUMBER 1315
- (2) RECORD INFORMATION PER COUNTY ENGINEERS
DRAWING CRP NO. 68-20 WIND RIVER ROAD
COUNTY ROAD NUMBER 2135
- (3) RECORD INFORMATION PER COUNTY ENGINEERS
DRAWING CRP NO. 60- SPRAGUE LANDING AND
SLYTER ROADS
- (4) RECORD INFORMATION PER PATRICIA ANDERSEN
SHORT PLAT (AFN 107282)
- (5) RECORD INFORMATION PER CRP 74-28 BOOK 1
SURVEY'S PAGE 61 (AFN 79988)
- (6) RECORD INFORMATION PER BOOK 1 SURVEY'S
PAGE 221 (AFN 90446)

FOUND 1 1/2" ALUMINUM CAP STAMPED "SKAMANIA COUNTY
ENG. PER SURVEY AFN 79988 (MON 161), HELD FOR THIS
SURVEY TO ESTABLISH ROAD ALIGNMENTS AND SECTION
BREAKDOWN; FOUND 3 1/2" U.S. ARMY CORPS OF
ENGINEERS BRASS CAP (MON 162), BEARS N155°49'W 4.24'
FROM COUNTY MONUMENT, DID NOT HOLD FOR THIS SURVEY.
CENTER 1/4 SECTION 29

CURVE TABLE				
CURVE	RADIUS	DELTA	LENGTH	CHORD
C12	816.60' (816.6') ²	16°12'24" (16°12'30") ²	231.55' (231.55') ²	N44°45'25"E 230.78'
C13	712.14' (716.3') ²	32°58'38" (32°55') ²	410.09' (411.46') ²	N53°09'02"E 404.44'
C14	1424.34' (1432.5') ²	20°31'18" (20°25') ²	510.16' (510.42') ²	N59°23'12"E 507.44'

SCALE: 1" = 100 FEET



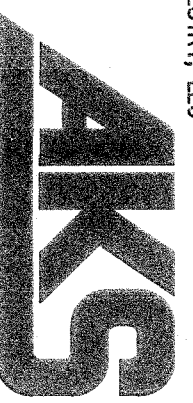
PREPARED FOR
WASHINGTON STATE
DEPARTMENT OF TRANSPORTATION
11018 NE 51ST CIRCLE
VANCOUVER, WA 98668-7409
(360) 905-2000

4/26/2017

JOB NAME: SR14 WIND RIVER HWY
JOB NUMBER: 3962-01
DRAWN BY: JDP
CHECKED BY: NSW/CAB
DRAWING NO.: 3962-01ROS

AKS ENGINEERING AND FORESTRY, LLC
9600 NE 126TH AVE
SUITE 2520
VANCOUVER, WA 98682
PHONE: 360.882.0419
FAX: 360.882.0426

ENGINEERING · PLANNING · SURVEYING
FORESTRY · LANDSCAPE ARCHITECTURE



RECORD OF SURVEY
LOCATED IN THE SOUTHWEST 1/4, SOUTHEAST 1/4, AND NORTHEAST 1/4
OF SECTION 29, TOWNSHIP 3 NORTH, RANGE 8 EAST, WILLAMETTE MERIDIAN,
SKAMANIA COUNTY, WASHINGTON

APRIL 21, 2017
SHEET 6 OF 6

MONUMENT TABLE

MONUMENT NUMBER	ROADWAY	STATION OFFSET	DESCRIPTION	REMARKS
102	SPRAGUE LANDING	5+45.22 20.00' LT	FOUND 1/2" IR WITH YPC INSCRIBED "GLAESER 15024" PER SHORT PLAT AEN 107282	HELD FOR SPRAGUE LANDING ROAD RESOLUTION
103	SPRAGUE LANDING	5+01.33 20.00' LT	FOUND 1/2" IR WITH YPC INSCRIBED "GLAESER 15024" PER SHORT PLAT AEN 107282, BENT, TIED SPIN HOLE	HELD FOR SPRAGUE LANDING ROAD RESOLUTION
104	SPRAGUE LANDING	NA	FOUND 1/2" IR WITH YPC INSCRIBED "GLAESER 15024" PER SHORT PLAT AEN 107282	HELD FOR SPRAGUE LANDING ROAD RESOLUTION
105	SPRAGUE LANDING	NA	FOUND 1/2" IR W/ R/C INSCRIBED "GLAESER 15024" PER SHORT PLAT AEN 107282	HELD FOR SPRAGUE LANDING ROAD RESOLUTION
106	SPRAGUE LANDING	7+74.87 34.36' LT	FOUND 5/8" IR W/ R/C INSCRIBED "BELL DESIGN 41954" UNKNOWN ORIGIN	
107	SPRAGUE LANDING	8+05.82 33.92' LT	FOUND 5/8" IR W/ R/C INSCRIBED "BELL DESIGN 41954" UNKNOWN ORIGIN	
108	SR14	20+50.55 89.36' LT	FOUND 1/2" IR UNKNOWN ORIGIN	COULD NOT LOCATE RECORD MAY BE RELATED TO FORMER HWY NO.8 ALIGNMENT LOCATED NORTHERLY OF CURRENT SR14
109	SR14	20+50.62 89.74' LT	FOUND 1 1/2" OUTER DIAMETER IP UNKNOWN ORIGIN, BENT TIED SPIN HOLE	MAY BE RELATED TO FORMER HWY NO.8 ALIGNMENT LOCATED NORTHERLY OF CURRENT SR14
110	SR14	19+62.13 74.51' LT	FOUND 5/8" IR W/ R/C INSCRIBED "TERRA PLS 18731" PER SURVEY AEN 2005157177	THIS APPEARS TO BE A 15' OFFSET TO TERRA'S SW 1/4 6 POSITION BASED ON HOLDING THE USCE BRASS CAP AT THE CENTER 1/4
111	SR14	36+26.76 42.63' RT	FOUND 1/2" IR W/ R/C INSCRIBED "OLSON 9025" UNKNOWN ORIGIN	LOCATION SHOWN PER AEN 90446 BUT APPEARS TO BE SET AT A LATTER DATE
112	SR14	36+62.44 41.34' RT	FOUND 1/2" IR WITH YPC INSCRIBED "OLSON 9025" UNKNOWN ORIGIN	APPEARS TO BE RELATED TO A PRIVATE ROAD EASEMENT
113	SR14	37+18.62 41.60' RT	FOUND 1/2" IR W/ R/C INSCRIBED "OLSON 9025" UNKNOWN ORIGIN	APPEARS TO BE RELATED TO A PRIVATE ROAD EASEMENT
114	SR14	38+74.39 66.85' RT	FOUND 5/8" IR W/ R/C ILLEGIBLE UNKNOWN ORIGIN	
115	SR14	38+77.43 50.00' RT	FOUND 5/8" IR W/ R/C INSCRIBED "VALS 15673 ORLS 1799" PER SURVEY AEN 2004153861	HELD IN CONJUNCTION WITH MON 117 FOR SR14 RESOLUTION
116	SR14	40+15.31 51.79' LT	FOUND 3/4" INSIDE DIAMETER IP APPEARS TO BE SET PER SHORT PLAT AEN 95038, RECORD CALLS FOR SETTING 1/2" IR	
117	SR14	43+50.89 50.00' LT	FOUND 1/2" IR APPEARS TO BE SET PER SHORT PLAT AEN 95038, LOOSE, PROJECTING 0.9' ABOVE THE SURFACE, TIED AT ENTRY TO GROUND	FALLS EAST OF CALCULATED POSITION, MAY HAVE BEEN SET AT AN OFFSET AS RECORD SHOWS AN APPROACH PERMIT REQUIRED AT THIS LOCATION, HELD IN CONJUNCTION WITH MON 115 FOR SR14 RESOLUTION
118	SR14	46+20.29 140.46' LT	FOUND 1/2" IR PER SHORT PLAT AEN 95038	
120	WIND RIVER	20+69.33 50.18' LT	FOUND 5/8" IR W/ R/C INSCRIBED "WALST SURVEY PLS 29288" PER SHORT PLAT AEN 138546	
121	WIND RIVER	17+73.77 0.00'	FOUND NAIL SET IN CONCRETE IN MONUMENT BOX, CRP 68-20 SHOWS MONUMENT AT THIS LOCATION	HELD
122	WIND RIVER	17+74.01 45.17' RT	FOUND 3"x3" CONCRETE MONUMENT UNKNOWN ORIGIN	

MONUMENT TABLE

MONUMENT NUMBER	ROADWAY	STATION OFFSET	DESCRIPTION	REMARKS
123	WIND RIVER	16+23.81 0.00'	FOUND NAIL SET IN CONCRETE IN MONUMENT BOX, CRP 68-20 SHOWS MONUMENT AT THIS LOCATION	HELD
124	WIND RIVER	28+40.03 0.00'	FOUND NAIL SET IN CONCRETE IN MONUMENT BOX, CRP 68-20 SHOWS MONUMENT AT THIS LOCATION	HELD
125	WIND RIVER	24+84.94 50.00' LT	FOUND 5/8" IR W/ R/C INSCRIBED "TRANTOW 15 15673 WA" PER SUBDIVISION PLAT AEN 129340	HELD FOR RIGHT-OF-WAY OFFSET
126	WIND RIVER	22+83.99 46.23' RT	FOUND 1/2" IR PER SHORT PLAT AEN 93551	
127	WIND RIVER	22+84.12 45.96' RT	FOUND 3"x3" CONCRETE MONUMENT UNKNOWN ORIGIN	
128	WIND RIVER	22+83.93 0.00'	FOUND NAIL SET IN CONCRETE IN MONUMENT BOX, CRP 68-20 SHOWS MONUMENT AT THIS LOCATION	HELD
130	WIND RIVER	22+91.43 48.89' LT	FOUND 5/8" IR PER SURVEY AEN 90570, LEANING SOUTH, TIED AT ENTRY TO GROUND	
131	WIND RIVER	22+83.35 48.83' LT	FOUND 3"x3" CONCRETE MONUMENT UNKNOWN ORIGIN	
132	WIND RIVER	22+23.30 45.00' RT	FOUND 1/2" IR PER SHORT PLAT AEN 93551	HELD FOR RIGHT-OF-WAY OFFSET
133	WIND RIVER	16+23.54 49.21' LT	FOUND 3"x3" CONCRETE MONUMENT UNKNOWN ORIGIN	
134	WIND RIVER	15+43.80 112.38' LT	FOUND 5/8" IR W/ R/C INSCRIBED "VALS 15673 ORLS 1799" ORIGIN UNKNOWN	MONUMENT NOT REFERENCED ON SHORT PLAT AEN 13288, APPEARS TO BE SET ON SUBDIVISION OF SECTION LINE IF HOLDING THE USCE MONUMENT AT THE C 1/4
135	WIND RIVER	15+38.16 87.19' LT	FOUND 5/8" IR IN MONUMENT BOX UNKNOWN ORIGIN	
136	WIND RIVER	15+25.59 39.54' LT	FOUND 3"x3" CONCRETE MONUMENT UNKNOWN ORIGIN	
137	WIND RIVER	16+68.63 110.00' RT	FOUND 3"x3" CONCRETE MONUMENT UNKNOWN ORIGIN	HELD
138	WIND RIVER	10+56.77 82.07' RT	FOUND 3"x3" CONCRETE MONUMENT UNKNOWN ORIGIN	
139	WIND RIVER	10+56.44 43.41' RT	FOUND 3"x3" CONCRETE MONUMENT UNKNOWN ORIGIN	
140	WIND RIVER	10+57.46 0.00'	FOUND NAIL SET IN CONCRETE IN MONUMENT BOX, CRP 68-20 SHOWS MONUMENT AT THIS LOCATION	HELD
142	WIND RIVER	10+58.79 59.04' LT	FOUND 3"x3" CONCRETE MONUMENT UNKNOWN ORIGIN, LEANING SOUTH, TIED BACK CENTER AT ENTRY TO GROUND	
143	WIND RIVER	8+25.91 0.00'	FOUND NAIL SET IN CONCRETE IN MONUMENT BOX, CRP 68-20 SHOWS MONUMENT AT THIS LOCATION	HELD
144	WIND RIVER	9+76.37 79.52' LT	FOUND 3"x3" CONCRETE MONUMENT UNKNOWN ORIGIN	HELD FOR RIGHT-OF-WAY ANGLE POINT STATIONING
145	WIND RIVER	8+25.66 40.00' RT	FOUND 3"x3" CONCRETE MONUMENT UNKNOWN ORIGIN	HELD FOR RIGHT-OF-WAY OFFSET
146	WIND RIVER	8+03.79 79.77' LT	FOUND 1 1/2" ALUMINUM CAP UNKNOWN ORIGIN	HELD FOR RIGHT-OF-WAY ANGLE POINT STATIONING
147	WIND RIVER	6+73.71 28.98' LT	FOUND 3"x3" CONCRETE MONUMENT UNKNOWN ORIGIN	
148	WIND RIVER	6+73.60 39.67' RT	FOUND 3"x3" CONCRETE MONUMENT UNKNOWN ORIGIN	
149	WIND RIVER	6+73.64 0.00'	FOUND NAIL SET IN CONCRETE IN MONUMENT BOX, CRP 68-20 SHOWS MONUMENT AT THIS LOCATION	HELD
150	SR14	20+23.20 47.25' RT	FOUND 1/2" INSIDE DIAMETER IRON PIPE, UNKNOWN ORIGIN	
152	SR14	47+03.70 47.31' LT	FOUND 1/2" IR PER SHORT PLAT AEN 93857	
153	SR14	53+68.45 73.03' RT	FOUND 5/8" IR W/ R/C INSCRIBED "VALS 15673 ORLS 1799" PER SURVEY AEN 2004153861	AT RAILROAD RIGHT-OF-WAY
155	WIND RIVER	28+40.01 50.00' LT	FOUND 5/8" IR W/ R/C INSCRIBED "TRANTOW 15 15673 WA" PER AEN 129340	HELD FOR RIGHT-OF-WAY OFFSET

MONUMENT TABLE

MONUMENT NUMBER	ROADWAY	STATION OFFSET	DESCRIPTION	REMARKS
156	WIND RIVER	28+39.12 48.86' LT	FOUND 3"x3" CONCRETE MONUMENT UNKNOWN ORIGIN	
157	WIND RIVER	25+46.49 50.00' LT	FOUND 5/8" IR W/ R/C INSCRIBED "TRANTOW 15 15673 WA" PER SUBDIVISION PLAT AEN 129340	HELD FOR RIGHT-OF-WAY OFFSET
158	WIND RIVER	24+30.71 45.00' RT	FOUND 1/2" IR PER SHORT PLAT AEN 93551, BENT EAST, TIED AT BEND	HELD FOR RIGHT-OF-WAY OFFSET
159	WIND RIVER	23+00.51 45.24' RT	FOUND 1/2" IR PER SHORT PLAT AEN 93551, BENT, TIED SPIN HOLE	
160	WIND RIVER	17+72.75 47.90' LT	FOUND 3"x3" CONCRETE MONUMENT UNKNOWN ORIGIN	FALLEN OVER, STRAIGHTENED
163	WIND RIVER	12+12.30 0.90' RT	FOUND NAIL SET IN 2" IP SET IN CONCRETE IN MONUMENT BOX, CRP 68-20 SHOWS MONUMENT AT THIS LOCATION	DID NOT HOLD
164	WIND RIVER	12+11.40 85.25' RT	FOUND 3"x3" CONCRETE MONUMENT UNKNOWN ORIGIN	
165	SR14	2+34.71 47.38' LT	FOUND 1/2" IR WITH YPC INSCRIBED "OLSON PLS 9025" PER SURVEY AEN 79988	BEARS NOT 33.35' E 211.49' (NOT 28.16' E 211.50' FROM CALCULATED SW COR SEC 29, VERIFIES CALCULATED CORNER POSITION)
166	SR14	0+90.82 13.34' LT	FOUND 1/2" IR WITH YPC INSCRIBED "OLSON PLS 9025" PER SURVEY AEN 79988	BEARS NOT 36.08' E 59.90' (NOT 28.16' E 60.00' S FROM CALCULATED SW COR SEC 29, VERIFIES CALCULATED CORNER POSITION)

REFERENCES

- (1) RECORD INFORMATION PER WSDOT PLAN SR14
- (2) STEVENSON TO WIND RIVER CONTRACT NUMBER 1315
- (3) RECORD INFORMATION PER COUNTY ENGINEERS DRAWING CRP NO. 68-20 WIND RIVER ROAD
- (4) COUNTY ROAD NUMBER 2135
- (5) RECORD INFORMATION PER COUNTY ENGINEERS DRAWING CRP NO. 60- SPRAGUE LANDING AND SLATER ROADS
- (6) RECORD INFORMATION PER PATRICIA ANDERSEN SHORT PLAT (AEN 107282)
- (7) RECORD INFORMATION PER CRP 74-26 BOOK 1 SURVEY PAGE 61 (AEN 79988)
- (8) RECORD INFORMATION PER BOOK 1 SURVEYS PAGE 221 (AEN 90446)

LEGEND

- FOUND 3"x3" CONCRETE MONUMENT, UNKNOWN ORIGIN, AS NOTED; TIED AT OUTSIDE CENTER EDGE
- DENOTES FOUND MONUMENT AS NOTED
- ▲ AKS CONTROL MONUMENT SET 1/2" IR, W/ R/C INSCRIBED "AKS ENGR. CONTROL" (SEE SHEET 4 FOR TABLE)
- ▲ AKS CONTROL MONUMENT SET MAG NAIL IN ASPHALT (SEE SHEET 4 FOR TABLE)
- ▲ DENOTES FOUND WSDOT CONTROL MONUMENT AS NOTED (SEE SHEET 4 FOR TABLE)
- ▲ FOUND OR CALCULATED PUBLIC LAND SURVEY SYSTEM CORNER AS NOTED
- IP IRON PIPE
- IR IRON ROD
- W/ R/C WITH A RED PLASTIC CAP
- W/ R/C WITH A YELLOW PLASTIC CAP
- AFN AUDITOR'S FILE NUMBER PER SKAMANIA COUNTY RECORDS
- CRP COUNTY ROAD PROJECT PER SKAMANIA COUNTY RECORDS
- ROW RIGHT-OF-WAY
- USCE UNITED STATES ARMY CORPS OF ENGINEERS STATE ROUTE 14
- SR14 WIND RIVER ROAD
- SLR SPRAGUE LANDING ROAD
- MON MONUMENT (SEE SHEET 6 FOR TABLE)
- WSDOT WASHINGTON STATE DEPARTMENT OF TRANSPORTATION



4/26/2017

PREPARED FOR

WASHINGTON STATE
DEPARTMENT OF TRANSPORTATION

11018 NE 51ST ORCLE
VANCOUVER WA, 98668-7409
(360) 905-2000

AKS ENGINEERING AND FORESTRY, LLC

9600 NE 126TH AVE
SUITE 2520
VANCOUVER, WA 98662
PHONE: 360.882.0419
FAX: 360.882.0426

ENGINEERING · PLANNING · SURVEYING
FORESTRY · LANDSCAPE ARCHITECTURE