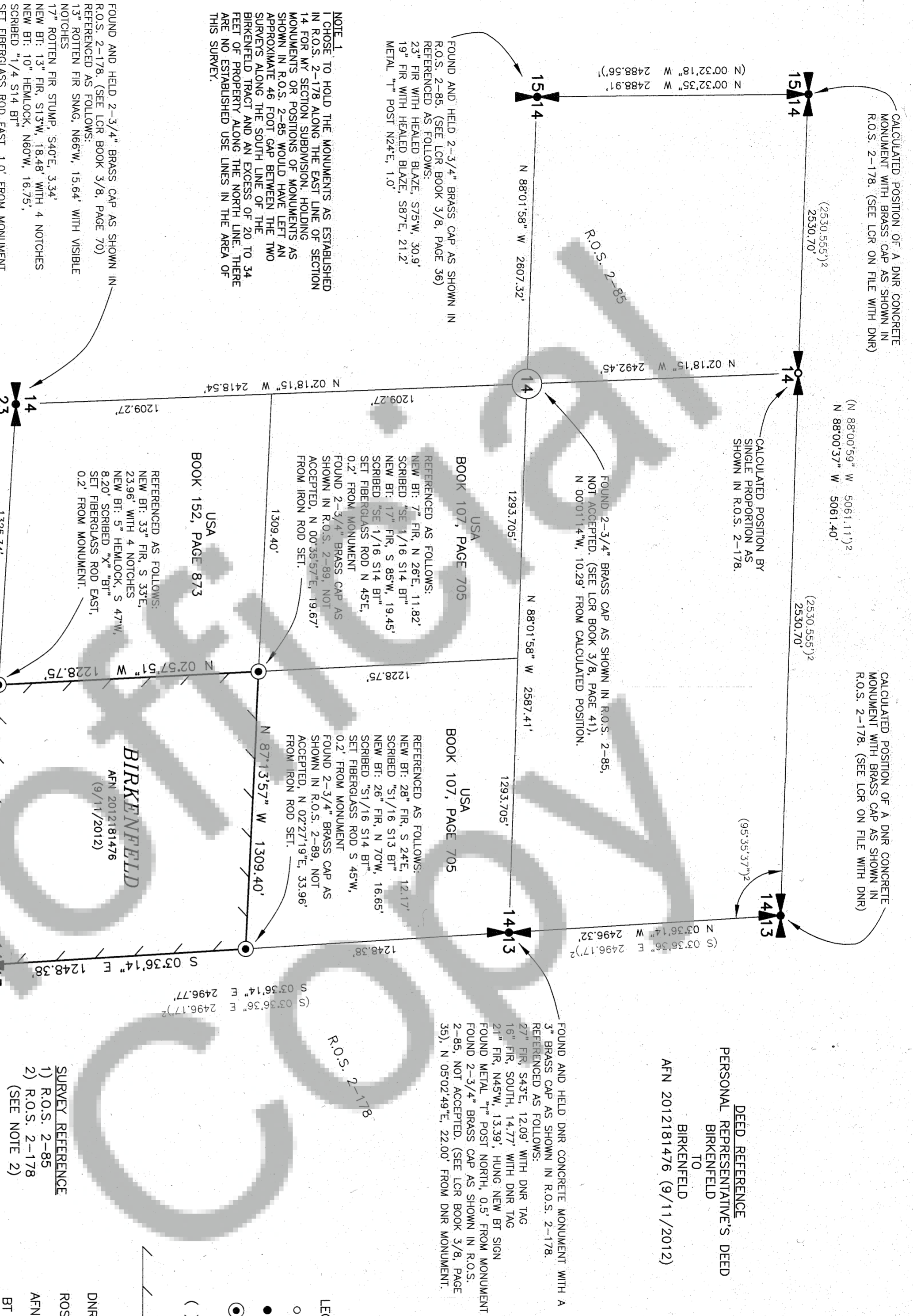
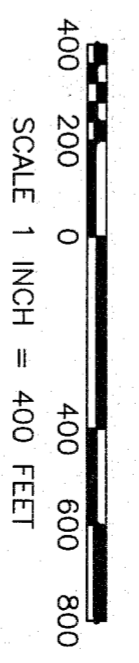
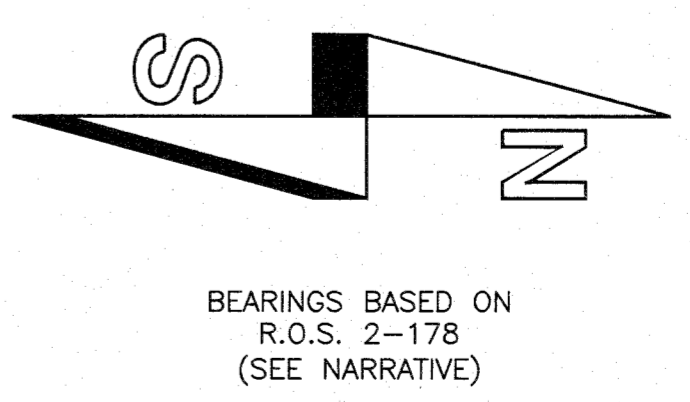


RECORD OF SURVEY

IN THE SE 1/4 SE 1/4 OF SECTION 14, T3N, R8E, W.M. SKAMANIA COUNTY WA.



FOUND AND HELD 2-3/4" BRASS CAP AS SHOWN IN R.O.S. 2-178. (SEE LCR BOOK 3/8, PAGE 70) REFERENCED AS FOLLOWS:
 13" ROTTEN FIR SNAQ, N66W, 15.64' WITH VISIBLE NOTCHES
 17" ROTTEN FIR STUMP, S40°E, 3.34'
 NEW BT: 13" FIR, S13°W, 18.48' WITH 4 NOTCHES
 NEW BT: 10" HEMLOCK, N60°W, 16.75'
 SCRIBED "1/4 S14 BT"
 SET FIBERGLASS ROD EAST, 1.0' FROM MONUMENT

NOTE 1
 I CHOSE TO HOLD THE MONUMENTS AS ESTABLISHED IN R.O.S. 2-178 ALONG THE EAST LINE OF SECTION 14 FOR MY SECTION SUBDIVISION, HOLDING MONUMENTS OR POSITIONS OF MONUMENTS AS SHOWN IN R.O.S. 2-85 WOULD HAVE LEFT AN APPROXIMATE 46 FOOT GAP BETWEEN THE TWO SURVEYS ALONG THE SOUTH LINE OF THE BIRKENFELD TRACT AND AN EXCESS OF 20 TO 34 FEET OF PROPERTY ALONG THE NORTH LINE. THERE ARE NO ESTABLISHED USE LINES IN THE AREA OF THIS SURVEY.

USA
 BOOK 107, PAGE 705
 REFERENCED AS FOLLOWS:
 NEW BT: 7" FIR, N 26°E, 11.82'
 SCRIBED "S1/16 S14 BT"
 NEW BT: 17" FIR, S 85°W, 19.45'
 SCRIBED "S1/16 S14 BT"
 SET FIBERGLASS ROD N 45°E,
 0.2' FROM MONUMENT
 FOUND 2-3/4" BRASS CAP AS SHOWN IN R.O.S. 2-89, NOT ACCEPTED, N 00°35'57"E, 19.67'
 FROM IRON ROD SET.

USA
 BOOK 107, PAGE 705
 REFERENCED AS FOLLOWS:
 NEW BT: 28" FIR, S 24°E, 12.17'
 SCRIBED "S1/16 S13 BT"
 NEW BT: 26" FIR, N 70°W, 16.66'
 SCRIBED "S1/16 S14 BT"
 SET FIBERGLASS ROD S 45°W,
 0.2' FROM MONUMENT
 FOUND 2-3/4" BRASS CAP AS SHOWN IN R.O.S. 2-89, NOT ACCEPTED, N 02°27'19"E, 33.96'
 FROM IRON ROD SET.

USA
 BOOK 152, PAGE 873
 REFERENCED AS FOLLOWS:
 NEW BT: 33" FIR, S 33°E,
 23.98' WITH 4 NOTCHES
 NEW BT: 5" HEMLOCK, S 47°W,
 8.20' SCRIBED "X" "BT"
 SET FIBERGLASS ROD EAST,
 0.2' FROM MONUMENT.

FOUND AND HELD DNR CONCRETE MONUMENT WITH A 3" BRASS CAP AS SHOWN IN R.O.S. 2-178. REFERENCED AS FOLLOWS:
 38" FIR, N 72°E, 14.23' WITH DNR TAG
 36" FIR, S 56°W, 10.48' WITH HEALED "X" BLAZE AND DNR TAG
 15" FIR, N02°W, 20.84' WITH DNR TAG
 SET FIBERGLASS POST ON SOUTH EDGE OF MONUMENT

FOUND AND HELD DNR CONCRETE MONUMENT WITH A 3" BRASS CAP AS SHOWN IN R.O.S. 2-178. REFERENCED AS FOLLOWS:
 38" FIR, N 72°E, 14.23' WITH DNR TAG
 36" FIR, S 56°W, 10.48' WITH HEALED "X" BLAZE AND DNR TAG
 15" FIR, N02°W, 20.84' WITH DNR TAG
 SET FIBERGLASS POST ON SOUTH EDGE OF MONUMENT

NOTE 2
 DISTANCES SHOWN FOR R.O.S. 2-178 ARE RECORD DISTANCES. DISTANCES SHOWN FOR THAT SURVEY WERE SCALED BY .9999434 AS SHOWN IN THAT SURVEY FOR THE PURPOSE OF CALCULATING THE NORTH LINE OF THIS SURVEY. THE DISTANCES SHOWN ALONG THE EAST LINE OF SECTION 14 IN THAT SURVEY ARE INCORRECTLY NOTED AS 2649.17'. I BELIEVE THIS TO JUST BE A SCRIBERS ERROR.

- SURVEY REFERENCE**
- R.O.S. 2-85
 - R.O.S. 2-178
- (SEE NOTE 2)

- LEGEND:**
- CALCULATED POSITION
 - INDICATES MONUMENT FOUND (UNLESS NOTED OTHERWISE)
 - ⊙ INDICATES 5/8" x 36" IRON REBAR WITH ORANGE PLASTIC CAP INSCRIBED "BROWN 42425" SET
 - () INDICATES RECORD INFORMATION PER SURVEY REFERENCE NUMBER

- INDICATES LINE MARKED WITH 1/2" x 72" FIBER GLASS RODS WITH RED AND WHITE RIBBON, TREES ALONG LINE PAINTED WITH BLUE PAINT.
- INDICATES DEPARTMENT OF NATURAL RESOURCES
- RECORD OF SURVEY
- AFN AUDITOR'S FILE NUMBER
- BT BEARING TREE



SURVEYOR'S CERTIFICATE

THIS MAP CORRECTLY REPRESENTS A SURVEY MADE BY ME OR UNDER MY DIRECTION IN CONFORMANCE WITH THE REQUIREMENTS OF THE SURVEY RECORDING ACT AT THE REQUEST OF _____ IN _____ SEPTEMBER, 2016.

GREGORY A. BROWN, PROFESSIONAL LAND SURVEYOR, I.S.# 42425

AUDITOR'S CERTIFICATE

FILED FOR RECORD THIS 14th DAY OF December, 2016 AT 8:54 A.M. IN BOOK _____ OF SURVEYS AT PAGE _____ AT THE REQUEST OF BROWN SURVEYING PLLC. AF# 201602647

 DEPUTY COUNTY AUDITOR

SCALE: 1"=400'
 JOB NO. 16-042
 DATE: 11/23/2016
 CALC BY: GAB
 DRAWN BY: GAB
 CHECKED BY: EVB
 SHEET 1 OF 1

BROWN
 SURVEYING PLLC
 PO BOX 414
 AMBOY, WA 98601
 360-600-0846
 ebrownsurveying@gmail.com

NARRATIVE
 THE PURPOSE OF THIS SURVEY WAS TO MONUMENT AND MARK THE LINES OF THE "BIRKENFELD TRACT" CITED IN SECTION 14 FOR FUTURE LOGGING PURPOSES. SECTION CONTROL FOR THIS SURVEY WAS OBTAINED BY UTILIZING "RTK GPS" MEASUREMENTS TO GROUND SECTION CORNERS AS SHOWN. THE GRID COORDINATE SYSTEM WAS CONVERTED TO GROUND PROJECT DATUM USING A COMBINED SCALE FACTOR OF 1.000045812. A RANDOM CONTROL TRAVERSE WAS RUN FROM GPS POINTS NEAR THE NORTHEAST 1/16 CORNER OF SECTION 14, THROUGH THE "BIRKENFELD TRACT" AND CLOSED ON GPS POINTS NEAR THE SOUTH 1/4 CORNER OF SECTION 14. A SUBLOOP TRAVERSE WAS RUN FROM AND CLOSED ON THE ABOVE MENTIONED TRAVERSE AROUND THE "BIRKENFELD TRACT". GPS POINTS AND THESE TRAVERSES WERE THEN ROTATED TO THE RECORD BEARING OF N86°27'05"W. BETWEEN THE SOUTH QUARTER CORNER AND THE SOUTHEAST CORNER OF SECTION 14 AS SHOWN IN R.O.S. 2-178. OTHER MONUMENTS SHOWN AND NEW MONUMENTS ESTABLISHED WERE TIED AND SET RADIALY FROM BOTH OF THESE TRAVERSES. ALL NEW REFERENCES WERE MEASURED TO A SPIKE AT SIDE CENTER OF TREE. ALL BEARINGS WERE TAKEN WITH A HAND COMPASS WITH A DECLINATION OF 16' EAST.

BROWN SURVEYING PLLC MAKES NO WARRANTIES AS TO MATTERS OF UNWRITTEN TITLE SUCH AS ADVERSE POSSESSION, ACQUISCEENCE, ESTOPPLE, ETC.

FIELD TRAVERSES WERE PERFORMED USING A NIKON NIVO 3.0C THREE SECOND TOTAL STATION WITH TDS DATA COLLECTION SYSTEM. THE FIELD TRAVERSE MET THE MINIMUM STANDARDS FOR SURVEYS AS DESIGNATED IN WAC 332-130-090. ALL CORNERS NOTED AS FOUND WERE VISITED ON 10/3 AND 10/24/2016.