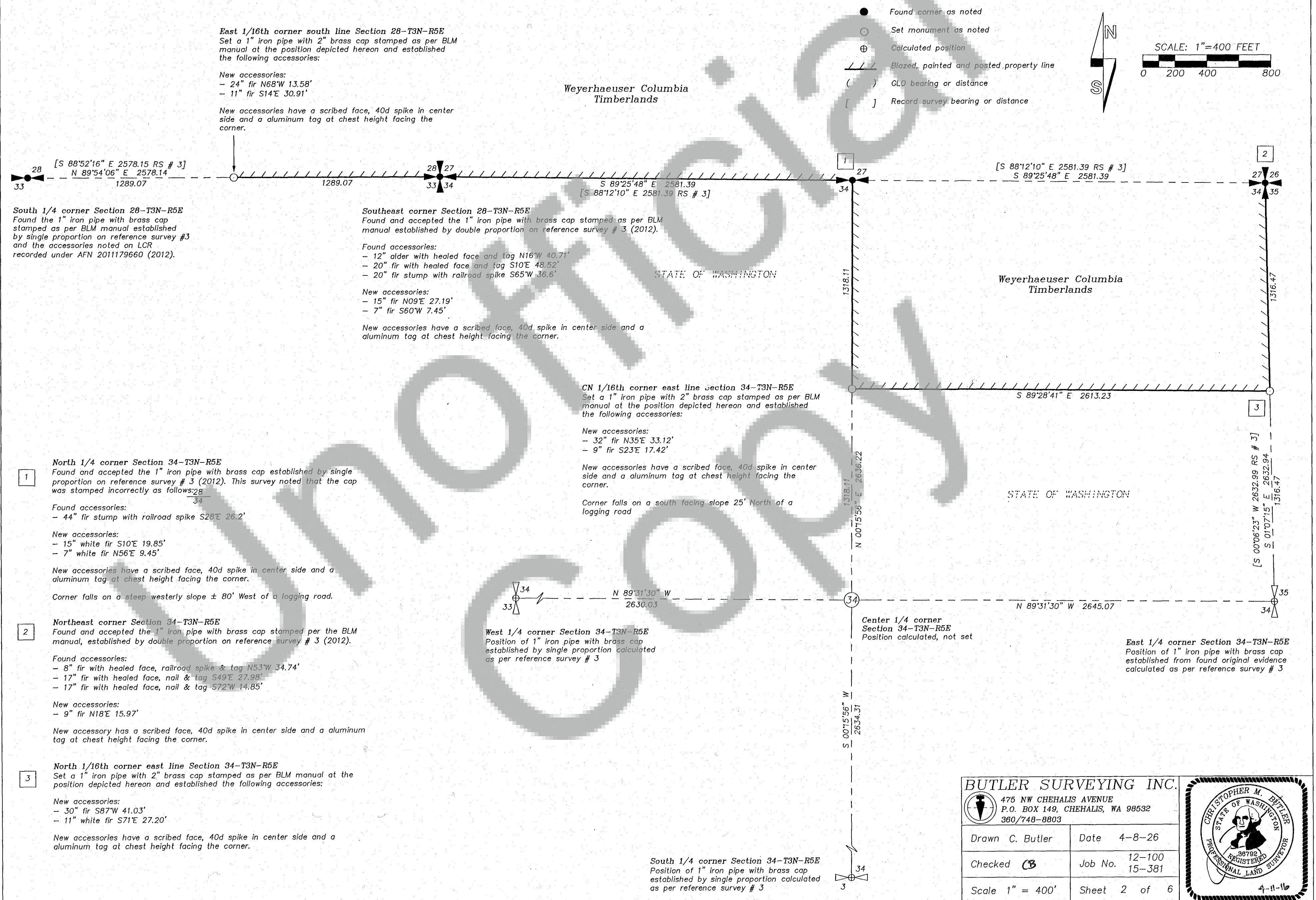
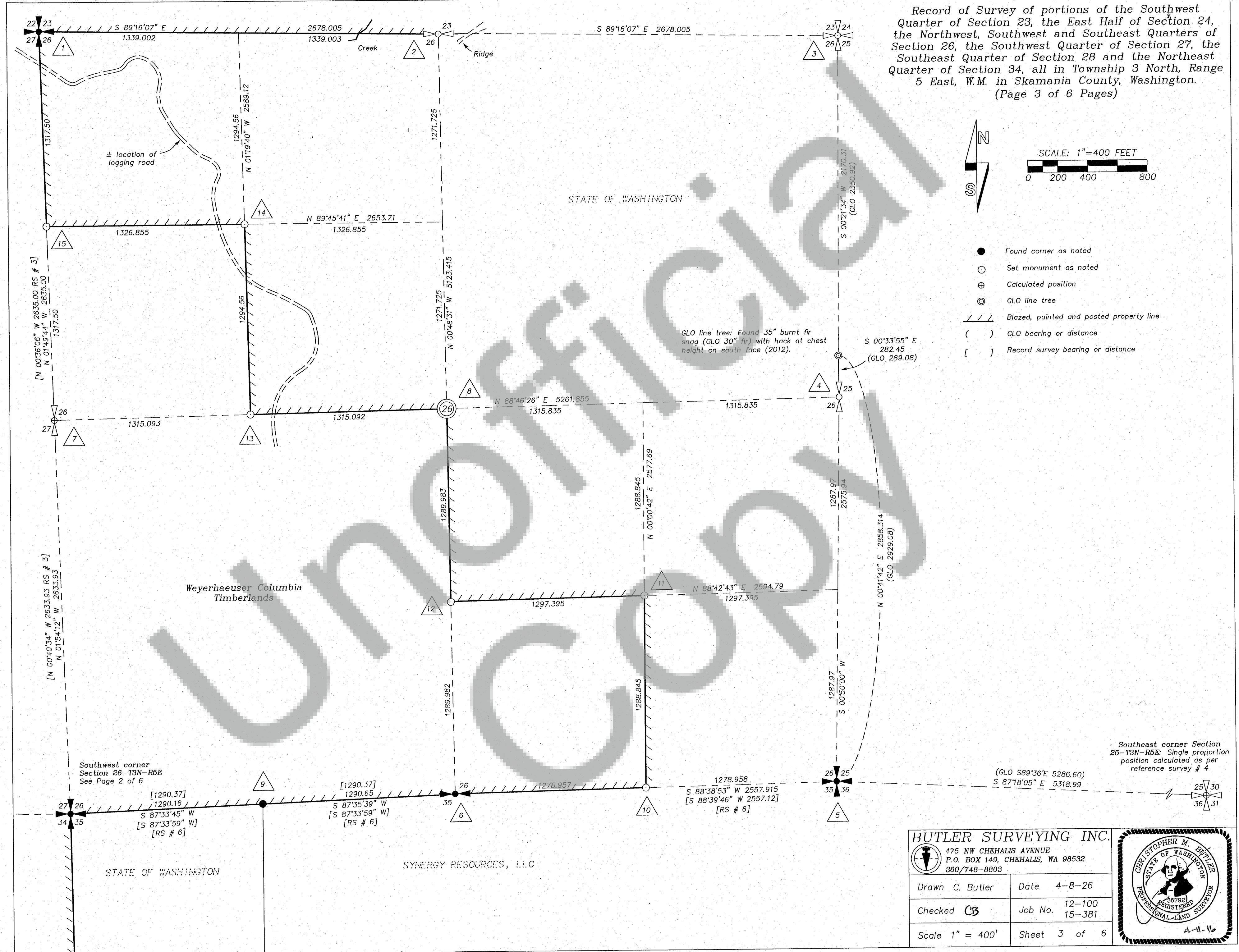


Record of Survey of portions of the Southwest Quarter of Section 23, the East Half of Section 24, the Northwest, Southwest and Southeast Quarters of Section 26, the Southwest Quarter of Section 27, the Southeast Quarter of Section 28 and the Northeast Quarter of Section 34, all in Township 3 North, Range 5 East, W.M. in Skamania County, Washington.

(Page 2 of 6 Pages)



Record of Survey of portions of the Southwest Quarter of Section 23, the East Half of Section 24, the Northwest, Southwest and Southeast Quarters of Section 26, the Southwest Quarter of Section 27, the Southeast Quarter of Section 28 and the Northeast Quarter of Section 34, all in Township 3 North, Range 5 East, W.M. in Skamania County, Washington.
(Page 3 of 6 Pages)



1 Northwest corner Section 26-T3N-R5E: Found and accepted the concrete monument with DNR brass cap as noted on reference survey # 3 (2012).

Found accessories:
- shell of $\pm 50'$ fir stump South 12' (GLO line tree)

New accessories:
- 19" white fir N32°W 48.70'
- 27" fir N76°E 27.27'
- 8" white fir S48°E 41.54'
- 16" fir S44°W 5.01'
- Logging road South $\pm 225'$
- T-post North 1.0'

Unless noted otherwise, new accessories have a scribed face, 40d spike in center side and a aluminum tag at chest height facing the corner.

2 North 1/4 corner Section 26-T3N-R5E: No original GLO evidence of this corner was recovered by this survey. At the single proportion position depicted hereon this survey set a Berntsen G3250 (1"x30") drive rod with 3" aluminum cap stamped as per BLM Manual and established the following accessories:

- 20" fir S78°E 21.15'
- 18" fir N28°W 9.25'
- T-post North 1.0'

Unless noted otherwise, new accessories have a scribed face, 40d spike in center side and a aluminum tag at chest height facing the corner.

GLO ground calls: This survey located a 4' wide stream flowing N42°E at a point 530' West of the set corner (GLO "1 lk creek runs North" West 590.7'). This survey also located an unmistakable ridge running N57°E at a point 215' East of set corner (GLO "top of ridge NW x SE" East 650.1'). This supports the theory promoted on reference survey # 3 that is explained in the narrative on Page 2 and depicted on Page 3 that GLO surveyor Webster likely did not close all of his traverses and many of the quarter corners in the township were set at the ends of stub traverses.

3 Northeast corner Section 26-T3N-R5E: This survey set a Berntsen G3250 (1"x30") drive rod with 3" aluminum cap stamped as per BLM Manual from the following recovered original evidence:

Found accessories:
- 29" fir snag, 20' tall with burnt out face S87°W 83.16' (GLO 30" fir S84°15'W 83.16')
- 38" fir snag, 15' tall with burnt out face N45°W 29.70' (GLO 40" fir N59°45'W 29.70')

and established the following accessories:

- 29" fir N71°W 23.80'
- 10" fir N26°E 12.57'
- 11" fir S66°E 26.21'
- 7" fir S39°W 10.58'
- T-post North 1.0'

Unless noted otherwise, new accessories have a scribed face, 40d spike in center side and a aluminum tag at chest height facing the corner.

Also see Detail A on Page 1 for the depiction of the mapping of GLO ground calls to the north and east of this position.

4 East 1/4 corner Section 26-T3N-R5E: This survey set a Berntsen G3250 (1"x30") drive rod with 3" aluminum cap stamped as per BLM Manual from the following recovered original evidence:

Found accessories:
- 30" fir snag, 6' tall with burnt out face N48°W 26.40' (GLO 20" hemlock N63°45'W 26.40')
- 20" hemlock snag, 5' tall in poor condition S22°E 17.82' (GLO 30" fir S11°45'E 17.82')
- 35" burnt fir snag with hack at chest height on south face N00°33'55"W 282.45 (GLO 30" fir North 289.08)

** As noted, this survey holds that the GLO bearing tree measurements were correct, but that the tree size and species were reversed in the original notes.

Established the following accessories:

- 14" fir N70°W 27.85'
- 14" fir N22°E 14.33'
- T-post North 1.0'

Unless noted otherwise, new accessories have a scribed face, 40d spike in center side and a aluminum tag at chest height facing the corner.

5 Southeast corner Section 26-T3N-R5E: Found and accepted the 5/8" rebar with aluminum cap LS 22330 as established from a GLO stump pattern and ground calls on reference survey # 5 and as noted on reference survey # 6 (2012).

Found accessories:
- 6" cherry N56°W 10.2' to nail
- 15" fir with healed face and tag S25°E 20.55'

Established the following accessories:

- 3" hemlock N45°W 6.87' to spike (not scribed)
- 15" fir N43°E 31.12'
- 11" fir S20°W 55.25'
- T-post North 1.0'

Unless noted otherwise, new accessories have a scribed face, 40d spike in center side and a aluminum tag at chest height facing the corner.

6 South 1/4 corner Section 26-T3N-R5E: Found and accepted the concrete monument with DNR brass cap established from original evidence and noted on reference surveys # 3 and 6 (2012).

Found accessories:
- 72" burnt fir snag S30°E 26.40' to nail (OBT)
- 15" fir with healed face and tag N30°E 52.04'
- T-post North 1.0'

7 West 1/4 corner Section 26-T3N-R5E: Position of 1" iron pipe with brass cap established from original evidence calculated as per reference survey # 3

8 Center 1/4 corner Section 26-T3N-R5E: At the position depicted on Page 3 this survey, set a Berntsen G3250 (1"x30") drive rod with 3" aluminum cap stamped as per BLM Manual and established the following accessories (2013):

- 45" white fir S63°E 18.84'
- 31" hemlock North 32.90'
- T-post North 1.0'

Unless noted otherwise, new accessories have a scribed face, 40d spike in center side and a aluminum tag at chest height facing the corner.

9 West 1/16th corner south line Section 26-T3N-R5E: Found and accepted the 1" iron pipe with 3" brass cap LS 22330 as established on reference survey # 6 (2013).

Found accessories: None

Established accessories: T-post East 1.0'

10 East 1/16th corner south line Section 26-T3N-R5E: At the position depicted on Page 3 this survey, set a Berntsen G3250 (1"x30") drive rod with 3" aluminum cap stamped as per BLM Manual and established the following accessories (2013):

- 7" hemlock S02°E 11.51'
- 12" fir N38°E 24.39'
- T-post North 1.0'

Unless noted otherwise, new accessories have a scribed face, 40d spike in center side and a aluminum tag at chest height facing the corner.

11 Southeast 1/16th corner Section 26-T3N-R5E: At the position depicted on Page 3 this survey, set a Berntsen G3250 (1"x30") drive rod with 3" aluminum cap stamped as per BLM Manual and established the following accessories (2013):

- 22" fir S03°E 11.39'
- 22" fir N60°W 22.98'
- T-post North 1.0'

Unless noted otherwise, new accessories have a scribed face, 40d spike in center side and a aluminum tag at chest height facing the corner.

12 Center-South 1/16th corner Section 26-T3N-R5E: At the position depicted on Page 3 this survey, set a Berntsen G3250 (1"x30") drive rod with 3" aluminum cap stamped as per BLM Manual and established the following accessories (2013):

- 20" fir N44°E 10.76'
- 17" fir S02°E 21.49'
- T-post North 1.0'

Unless noted otherwise, new accessories have a scribed face, 40d spike in center side and a aluminum tag at chest height facing the corner.

13 Center-West 1/16th corner Section 26-T3N-R5E: At the position depicted on Page 3 this survey, set a Berntsen G3250 (1"x30") drive rod with 3" aluminum cap stamped as per BLM Manual and established the following accessories (2013):

- 11" fir N20°E 24.33'
- 15" fir S86°E 19.20'
- T-post North 1.0'

Unless noted otherwise, new accessories have a scribed face, 40d spike in center side and a aluminum tag at chest height facing the corner.

14 Northwest 1/16th corner Section 26-T3N-R5E: At the position depicted on Page 3 this survey, set a Berntsen G3250 (1"x30") drive rod with 3" aluminum cap stamped as per BLM Manual and established the following accessories (2013):

- 13" white fir S73°E 4.72'
- 16" fir S08°E 10.80'
- T-post North 1.0'

Unless noted otherwise, new accessories have a scribed face, 40d spike in center side and a aluminum tag at chest height facing the corner.

15 North 1/16th corner west line Section 26-T3N-R5E: At the position depicted on Page 3 this survey, set a Berntsen G3250 (1"x30") drive rod with 3" aluminum cap stamped as per BLM Manual and established the following accessories (2013):

- 16" fir N18°W 5.88'
- 24" fir N88°E 22.97'
- T-post North 1.0'

Unless noted otherwise, new accessories have a scribed face, 40d spike in center side and a aluminum tag at chest height facing the corner.

Record of Survey of portions of the Southwest Quarter of Section 23, the East Half of Section 24, the Northwest, Southwest and Southeast Quarters of Section 26, the Southwest Quarter of Section 27, the Southeast Quarter of Section 28 and the Northeast Quarter of Section 34, all in Township 3 North, Range 5 East, W.M. in Skamania County, Washington.
(Page 4 of 6 Pages)

16 West 1/4 corner Section 23-T3N-R5E: Found and accepted the 1 1/4" iron pipe established by single proportion on reference survey # 2 (2014)

Found accessories:
- None

Replaced the found pipe with a Berntsen G3250 (1"x30") drive rod with 3" aluminum cap stamped as per BLM Manual and established the following accessories:

New accessories:
- 9" fir N05°W 13.78'
- 11" fir N84°E 10.43'
- T-post North 1.0'

New accessories have a scribed face, 40d spike in center side and a aluminum tag at chest height facing the corner.

Corner falls in rocky bluffs on a precipitous eastern slope and is only safely accessible from the south or northwest.

17 Center 1/4 corner Section 23-T3N-R5E: Set a Berntsen G3250 (1"x30") drive rod with 3" aluminum cap stamped as per BLM Manual at the position depicted on Page 5 of this survey and established the following accessories:

New accessories:
- 11" fir S46°W 12.98'
- 17" fir N78°E 3.10'
- T-post North 1.0'

New accessories have a scribed face, 40d spike in center side and a aluminum tag at chest height facing the corner.

Corner falls on a steep north slope

18 North 1/4 corner Section 24-T3N-R5E: No original evidence was recovered by this survey. At the single proportion position depicted on Page 6 of this survey, set a 5/8" rebar with 3" aluminum cap stamped as per BLM Manual and established the following accessories:

New accessories:
- 12" fir S65°W 5.94'
- 19" fir N37°W 14.91'
- 13" fir S86°E 14.00'
- SE'ly flowing creek East 120' (GLO East 58.74')

New accessories have a 40d spike in center side, 4 notches and a aluminum tag at chest height facing the corner.

19 South 1/4 corner Section 24-T3N-R5E: No original evidence was recovered by this survey. At the single proportion position depicted on Page 6 of this survey, set a 5/8" rebar with 3" aluminum cap stamped as per BLM Manual and established the following accessories:

New accessories:
- 20" fir N85°E 31.75'
- 24" fir N59°W 6.13'
- 22" fir S16°E 27.28'

New accessories have a 40d spike in center side, 4 notches and a aluminum tag at chest height facing the corner.

20 East 1/4 corner Section 24-T3N-R5E: No original evidence was recovered by this survey. At the single proportion position depicted on Page 6 of this survey, set a 5/8" rebar with 3" aluminum cap stamped as per BLM Manual and established the following accessories:

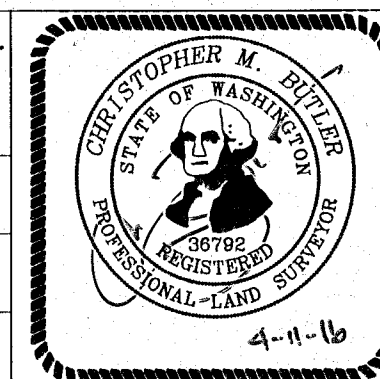
New accessories:
- 21" fir S72°E 44.08'
- 35" fir N54°E 57.38'

New accessories have a 40d spike in center side, 4 notches and a aluminum tag at chest height facing the corner.

Corner falls at the northeast top edge of a $\pm 100'$ tall rock bluff. From set corner go East 6.0' to a 8' tall 7' wide open face rock and West 6.0' to a 1.0' wide creek at its point of waterfall off the top of said bluff. Also, go East 165' to an existing logging road.

BUTLER SURVEYING INC.
475 NW CHEHALIS AVENUE
P.O. BOX 149, CHEHALIS, WA 98532
360/748-8803

Drawn C. Butler	Date 4-8-26
Checked CB	Job No. 12-100 15-381
Scale 1" = 400'	Sheet 4 of 6



Northwest corner Section 23-T3N-R5E: Found and accepted the 1 1/4" iron pipe as noted on reference survey # 2 (2014).

Found accessories:

- 60" fir snag, 25' tall N81°E 34.5' (OBT)
- 40" fir snag, 12' tall S06°E 21.8' (OBT)
- 36" fir snag, 20' tall S73°W 23.1' (OBT)
- 40" fir snag, 8' tall N32°W 5.0' (OBT)
- 14" fir with healed face N56°W 6.25' to new spike (Mason RP)
- 13" fir with healed face S02°W 12.53' to new spike (Mason RP)

Replaced the found pipe with a Bernsten G3250 (1"x30") drive rod with 3" aluminum cap stamped as per BLM Manual and established the following accessories:

New accessories:

- 19" fir S60°E 30.95'
- 13" fir N48°E 15.92'
- T-post North 1.0'

New accessories have a scribed face, 40d spike in center side and a aluminum tag at chest height facing the corner.

North 1/4 corner Section 23-T3N-R5E:
No original evidence of this corner was recovered. Position calculated by single proportion, not set.

Found GLO line tree.
See detail on Page 1

Record of Survey of portions of the Southwest Quarter of Section 23, the East Half of Section 24, the Northwest, Southwest and Southeast Quarters of Section 26, the Southwest Quarter of Section 27, the Southeast Quarter of Section 28 and the Northeast Quarter of Section 34, all in Township 3 North, Range 5 East, W.M. in Skamania County, Washington.
(Page 5 of 6 Pages)



SCALE: 1"=500 FEET
0 250 500 1000

- Found corner as noted
- Set monument as noted
- ⊕ Calculated position
- ⊙ GLO line tree
- /// Blazed, painted and posted property line
- () GLO bearing or distance
- [] Record survey bearing or distance

