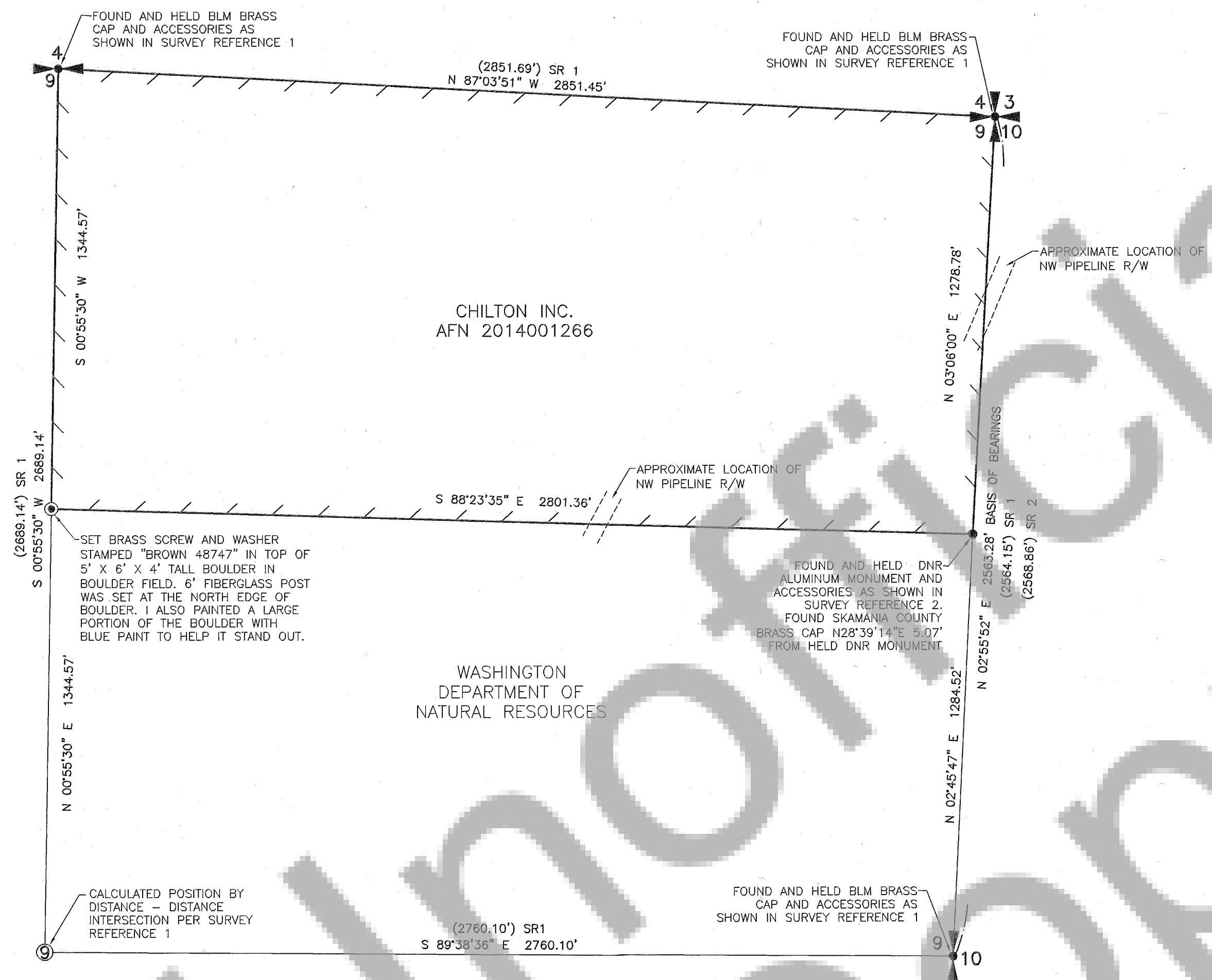


RECORD OF SURVEY
IN A PORTION OF THE
NE 1/4 AND NW 1/4
OF THE NE 1/4 OF SECTION 9
T. 2 N., R. 7 E., W. M.
SKAMANIA COUNTY, WASHINGTON



- LEGEND:
- INDICATES MONUMENT FOUND AS NOTED
 - ⊙ INDICATES MONUMENT SET AS NOTED
 - INDICATES CALCULATED POSITION
 - () INDICATES RECORD INFORMATION PER SURVEY REFERENCE NUMBER
 - AFN AUDITORS FILE NUMBER
 - / — INDICATES LINE MARKED WITH 1/2" x 72" FIBER GLASS RODS WITH RED AND WHITE RIBBON. TREES ALONG LINE PAINTED AND BLAZED WITH BLUE PAINT.

NARRATIVE
THE PURPOSE OF THIS SURVEY WAS TO MARK THE BOUNDARY LINES SHOWN HEREON FOR CHILTON INC. FOR FUTURE LOGGING. FOR THIS SURVEY I RAN A RANDOM TRAVERSE FROM THE EAST 1/4 CORNER OF SECTION 9 NORTHERLY TO THE NORTHEAST CORNER OF SECTION 9. I THEN ROTATED THIS TRAVERSE TO MATCH THE RECORD BEARING BETWEEN SAID CORNERS AS SHOWN IN SURVEY REFERENCE 1 ESTABLISHING THIS FOR MY BASIS OF BEARINGS. A CLOSED LOOP TRAVERSE WAS THEN RAN AROUND THE SUBJECT PROPERTY. ALL CORNERS SET OR TIED WERE DONE SO FROM SAID TRAVERSES. THE MONUMENT AT THE NORTHEAST CORNER OF SECTION 9 WAS BENT TO THE NE. WE PLUMBED THE MONUMENT BACK UP AND VERIFIED ITS POSITION TO THE EXISTING REFERENCES. THIS IS WHY THERE IS A SLIGHT DISCREPANCY IN THE DISTANCE ALONG THE EAST LINE OF THE NE 1/4 OF SECTION 9 AS SHOWN IN SURVEY REFERENCE 1.

SURVEY REFERENCE:
1) LONGVIEW TIMBER CORP. AFN 2011178518
2) DNR BK 3 PG 36



SURVEYOR'S CERTIFICATE
THIS MAP CORRECTLY REPRESENTS A SURVEY MADE BY ME OR UNDER MY DIRECTION IN CONFORMANCE WITH THE REQUIREMENTS OF THE SURVEY RECORDING ACT AT THE REQUEST OF CHILTON INC. IN DECEMBER, 2014

Edward V. Brown 9-30-2015
EDWARD V. BROWN, PROFESSIONAL LAND SURVEYOR, LS# 48747

SCALE: 1"=300'	BROWN SURVEYING PLLC PO BOX 414 AMBOY, WA 98601 (360) 600-0846 ebrownsurveying@gmail.com
JOB NO. 2N7E9	
DATE: 8-1-15	
CALC BY: EVB	
DRAWN BY: EVB	
CHECKED BY: EVB	
SHEET 1 OF 1	

AUDITOR'S CERTIFICATE
FILED FOR RECORD THIS 20th DAY OF October 2015 AT 3:32 P.M. IN BOOK AFN 2015002140 OF SURVEYS AT PAGE 1
AT THE REQUEST OF BROWN SURVEYING PLLC.

Robert J. Waymire
DEPUTY COUNTY AUDITOR

BROWN SURVEYING PLLC MAKES NO WARRANTIES AS TO MATTERS OF UNWRITTEN TITLE SUCH AS ADVERSE POSSESSION, ACQUIESCENCE, ESTOPPLE, ETC.

A FIELD TRAVERSE WAS PERFORMED USING A NIKON NIVO 3.0C THREE SECOND TOTAL STATION WITH TDS DATA COLLECTION SYSTEM. THE FIELD TRAVERSE MET THE MINIMUM STANDARDS FOR SURVEYS AS DESIGNATED IN WAC 332-130-090. ALL CORNERS NOTED AS FOUND WERE VISITED ON NOVEMBER 23 & 28, 2014.