

LINE TABLE		
LINE	LENGTH	BEARING
L1	45.80	S00°35'55"
L2	48.54	N00°24'06"
L3	52.28	N00°23'03"
L4	56.81	N00°55'14"
L5	61.52	N00°50'31"

LEGEND

✦ EXISTING MONUMENT
○ SET 5/8"x24" CAPPED REBAR
○ EXISTING MONUMENT(FD AS NOTED)
() DISTANCE OF RECORD

BASIS OF BEARINGS

SURVEY RECORDED IN
BOOK 2 OF SURVEYS,
PAGE 124--THE SOUTH LINE OF THE NE 1/4 OF THE SW 1/4.

MONUMENTS VISITED

MARCH, 2013

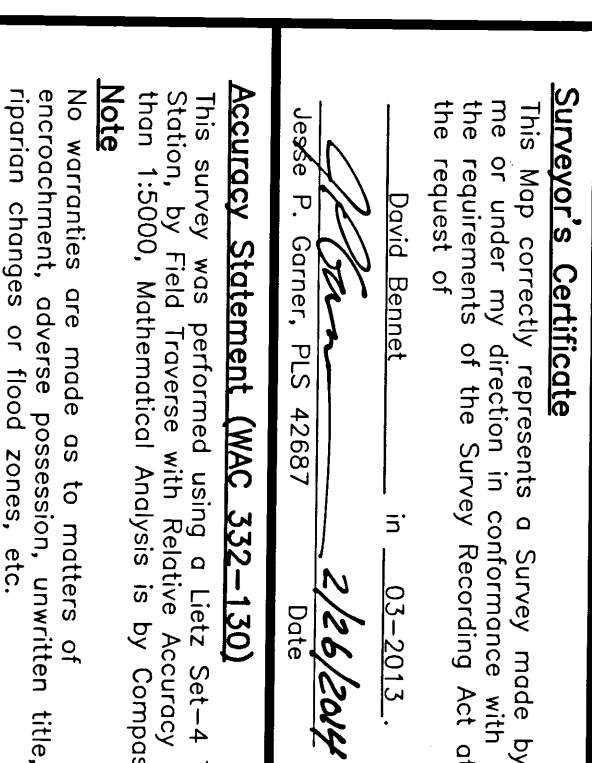
LEGAL DESCRIPTION

BOUNDARY LINE ADJUSTMENT QUIT CLAIM DEEDS AF 2013001009, 2013001008
IN THE W 1/2 OF THE SW 1/4 OF
SECTION 21, T 3 N, R 8 E, WM

REFERENCES

SURVEYS: BOOK 1, PG 77
BOOK 2, PG 124
SHORT PLAYS: BOOK 3, PG 124

BOOK 3, PG 184
BOOK 3, PG 191
BOOK 3, PG 345
BOOK 3, PG 412
HOT SPRINGS SUB, BOOK B, PG 70
TREMEL ACRES, BOOK B, PG 43
ANNIE MEADOWS SHORT PLAT AF 20121818-45



Accuracy Statement (WAC 332-130)

This survey was performed using a Lietz Set-4 Total Station, by Field Traverse with Relative Accuracy greater than 1:5000. Mathematical Analysis is by Compass Rule

Note

No warranties are made as to matters of encroachment, adverse possession, unwritten title, riparian changes or flood zones, etc.

Date: 03-26-13

Index

[illegible]

1/4	1/4	Sec.	T.	R
-----	-----	------	----	---

Survived By CE/PB				
-------------------	--	--	--	--

[illegible][illegible]

Sheet 1 Of 1

Job Number: 2010-046BLA

Survey For

DAVID BENNET

Section 21, T. 3 N, R. 08 E, W.M.

Skamania County, Washington

Pioneer Surveying & Engineering, Inc.

PSE Civil Engineering and Land Planning

125 Simcoe Drive
Goldendale, Washington 98620

Phone (509) 773-4945, Fax (509) 773-5888, E-Mail pse@gorge.net

Auditor's Certificate

LIBRARY OF CONGRESS
3rd
March
2014

Filed for record this 2 day of January, ~~2012~~

at 10:20 AM
2011 000240

recorded in Auditor's file No. 2014000357.

At the request of Eugene Esch.

Maria Theresia

Melissa Stalder

Skamania County Auditor - Deputy