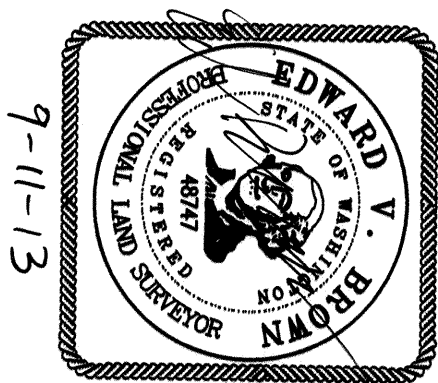
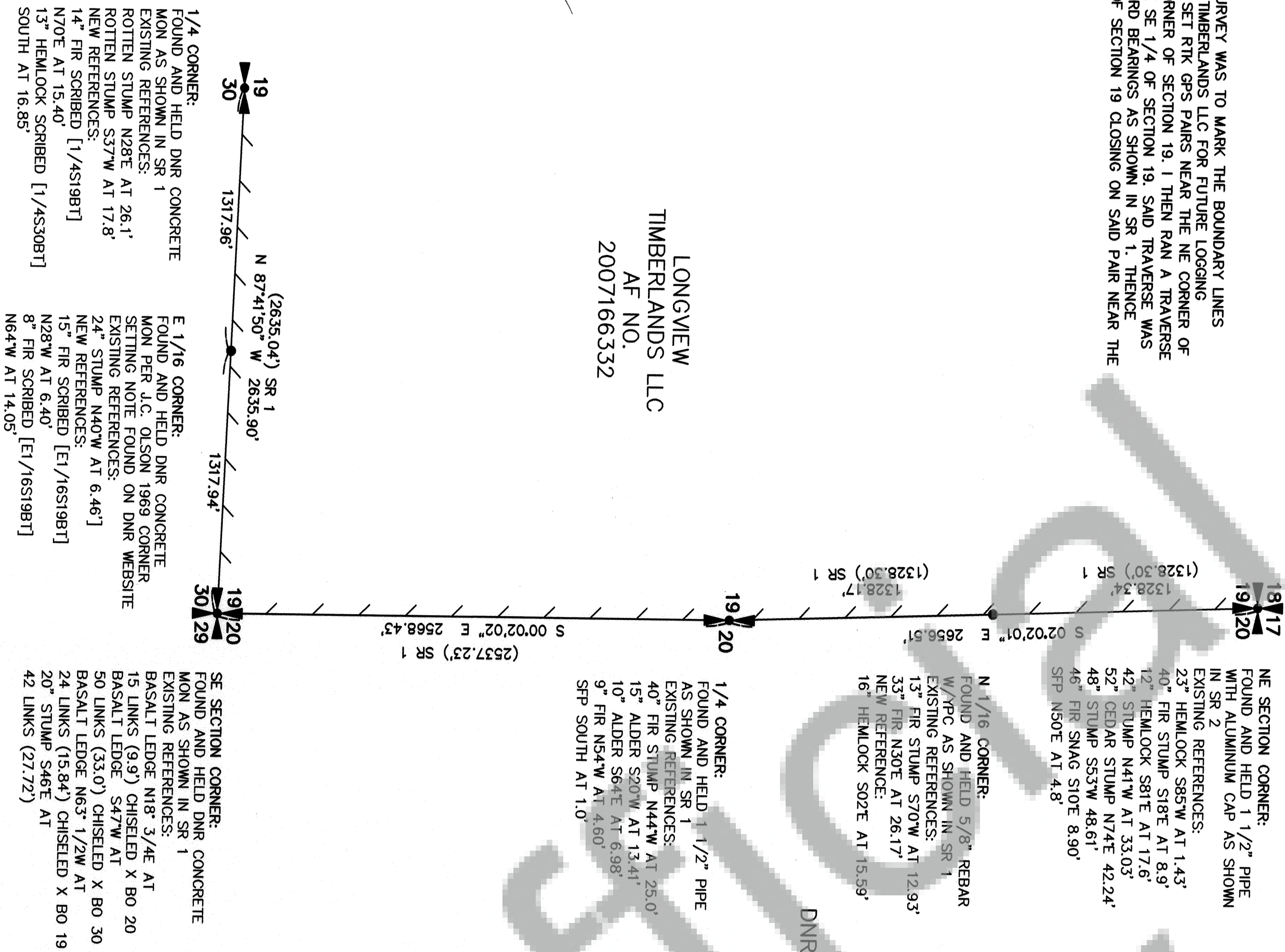


NARRATIVE

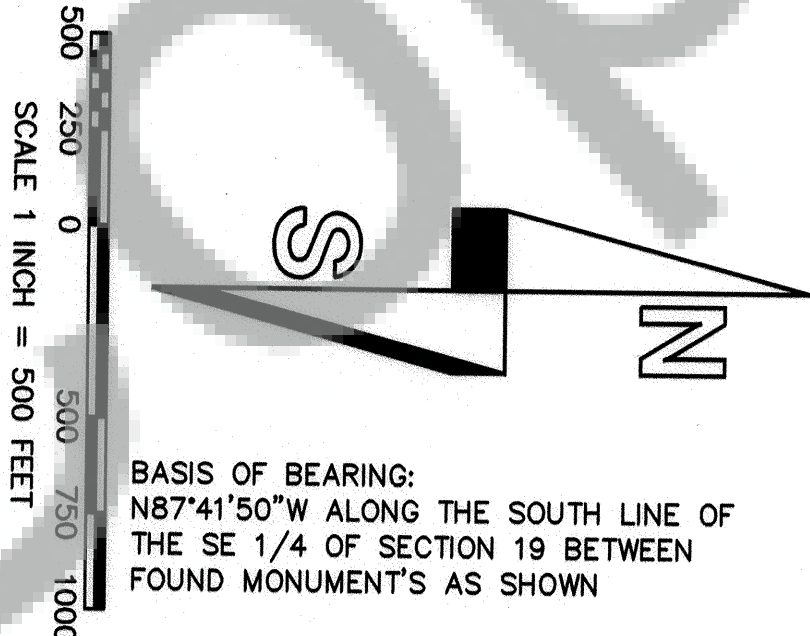
THE PURPOSE OF THIS SURVEY WAS TO MARK THE BOUNDARY LINES SHOWN HEREON FOR LONGVIEW TIMBERLANDS LLC FOR FUTURE LOGGING PURPOSES. FOR THIS SURVEY I SET RTK GPS PAIRS NEAR THE NE CORNER OF SECTION 19 AND THE N 1/4 CORNER OF SECTION 19. I THEN RAN A TRAVERSE ALONG THE SOUTH LINE OF THE SE 1/4 OF SECTION 19. SAID TRAVERSE WAS THEN ROTATED TO MATCH RECORD BEARINGS AS SHOWN IN SR 1. THENCE NORTH ALONG THE EAST LINE OF SECTION 19 CLOSING ON SAID PAIR NEAR THE NE CORNER OF SECTION 19.



LONGVIEW
TIMBERLANDS LLC
AF NO.
2007166332



RECORD OF SURVEY
IN A PORTION OF THE
SE 1/4 AND THE NE 1/4
SECTION 19
T. 2 N., R. 6 E., W. M.
SKAMANIA COUNTY, WASHINGTON
SEPTEMBER 03, 2013



- LEGEND:
- INDICATES MONUMENT FOUND AS NOTED
 - () INDICATES RECORD INFORMATION PER SURVEY REFERENCE NUMBER

— INDICATES LINE MARKED WITH 1/2" x 7/2" FIBER GLASS RODS WITH RED AND WHITE RIBBON.
— TREES ALONG LINE PAINTED AND BLAZED WITH BLUE PAINT.
SFP INDICATES STEEL FENCE POST

SURVEY REFERENCE:
1)BU SHINCKE BOOK 2 PAGE 272
2)GEORGE FORD BOOK 3 PAGE 469

DEED REFERENCE:
GRANTOR: LONGVIEW FIBRE CO.
GRANTEE: LONGVIEW TIMBERLANDS LLC.
AF NO. 2007166332

SURVEYOR'S CERTIFICATE

THIS MAP CORRECTLY REPRESENTS A SURVEY MADE BY ME OR UNDER MY DIRECTION IN CONFORMANCE WITH THE REQUIREMENTS OF THE SURVEY RECORDING ACT AT THE REQUEST OF _____ IN _____ JULY _____, 2013.

Ed Brown 9-11-13
EDWARD V. BROWN, PROFESSIONAL LAND SURVEYOR, LS# 48747

SCALE: 1"=500'

JOB NO. 2NBE19
DATE: 9/03/13
CALC BY: EVB
DRAWN BY: RLJ
CHECKED BY: EVB
SHEET 1 OF 1

LONGVIEW TIMBER
CORPORATION
10 INTERNATIONAL WAY
LONGVIEW, WA 98632

AUDITOR'S CERTIFICATE

FILED FOR RECORD THIS 16th DAY OF September 20 13 AT
2:57 P.M. IN BOOK _____ OF SURVEYS AT PAGE 5
AT THE REQUEST OF LONGVIEW TIMBER CORPORATION, AF 2013002055

McLean Stricklandson
DEPUTY COUNTY AUDITOR

LONGVIEW TIMBER CORPORATION MAKES NO WARRANTIES AS TO MATTERS OF UNWRITTEN TITLE SUCH AS ADVERSE POSSESSION, ACQUESCENCE, ESTOPPLE, ETC. A FIELD TRAVERSE WAS PERFORMED USING A NIKON NIVO 3.0C THREE SECOND TOTAL STATION WITH TDS DATA COLLECTION SYSTEM. THE FIELD TRAVERSE MET THE MINIMUM STANDARDS FOR SURVEYS AS DESIGNATED IN WAC 332-130-090. ALL CORNERS NOTED AS FOUND WERE VISITED ON 07-30-2013.

NOTE: ALL NEW REFERENCES HAVE WERE MEASURED TO A NAIL AT SIDE CENTER WITH A LOGGERS TAPE. ALL BEARINGS WERE TAKEN WITH A HAND COMPASS WITH THE DECLINATION SET AT 21° E.