

LAND CORNER MONUMENT RECORD

R.10 E.

LOCATION

LC \_\_\_\_\_

	6	5	4	3	2	1
	7	●	8	9	10	11
	18	17	16	15	14	13
T.						
5	19	20	21	22	23	24
N	30	29	28	27	26	25
	31	32	33	34	35	36

36	31	32
1	6	5
12	7	8

TOWNSHIP 5 N

RANGE 10 E

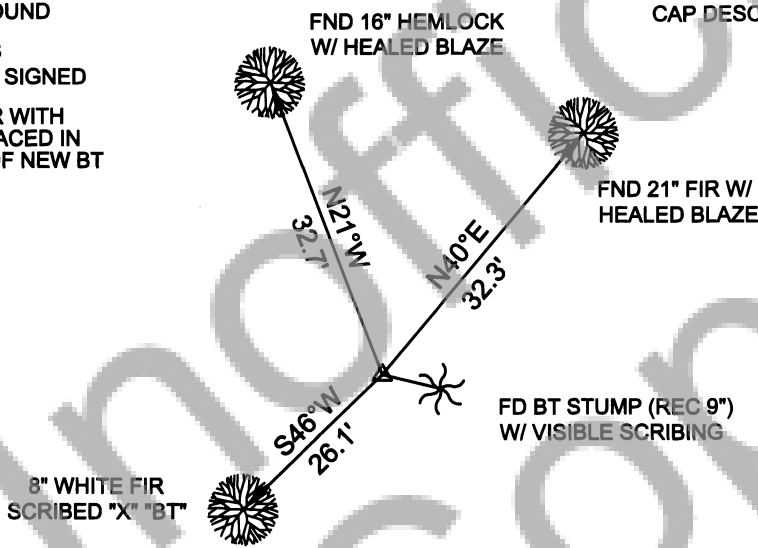
SECTION 6

TYPE OF MONUMENT; TIES TO BEARING TREES, OBJECTS, etc. (SKETCH)

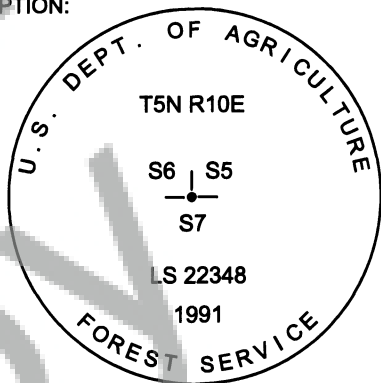
FOUND 3.5" ALUMINUM CAP  
ON 2" ALUMINUM PIPE  
PROT 4" ABOVE GROUND

ALL BEARING TREES  
WERE PAINTED AND SIGNED

A NAIL AND WASHER WITH  
"LS 36619" WERE PLACED IN  
THE SIDE-CENTER OF NEW BT



CAP DESCRIPTION:



REMARKS: ( History of Corner, etc. )

CORNER HISTORY:

1914- G.L.O. ORIGINAL SURVEY BY FREDERICK W. RASE

1991- LANDS OWNED BY THE FOREST SERVICE WERE POSTED AND MONUMENTED.

DIRECTIONS:

From the Mt. Adams Ranger Station, follow SR141 3.4 mi to Forest Road 86. Go south on 86 1.1 mi to Forest Rd. 8620. Follow 8620 for approx. 1.4 mi. to 8620-011. Follow 8620-011 southerly approx. 0.2 mi to location tag on east side of road. Walk east +/-200 ft to posted line at E1/16.

Follow posted line east 1/4 mi. to corner. National Forest boundary is posted east and west from corner.



NAME BERTA ROMIO, RLS 36619

DATE 10/25/2012

SIGNATURE Berta Romio