

LAND CORNER MONUMENT RECORD

R. 10 E. LOCATION LC _____

T. 5 N						
	6	5	4	3	2	1
	7	8	9	10	11	12
	18	17	16	15	14	13
	19	20	21	22	23	24
	30	29	28	27	26	25
	31	32	33	34	35	36

36	31	32
1	6	5
12	7	8

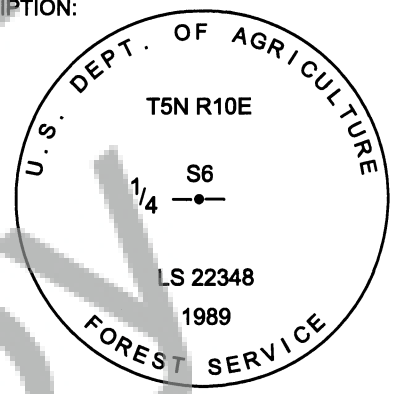
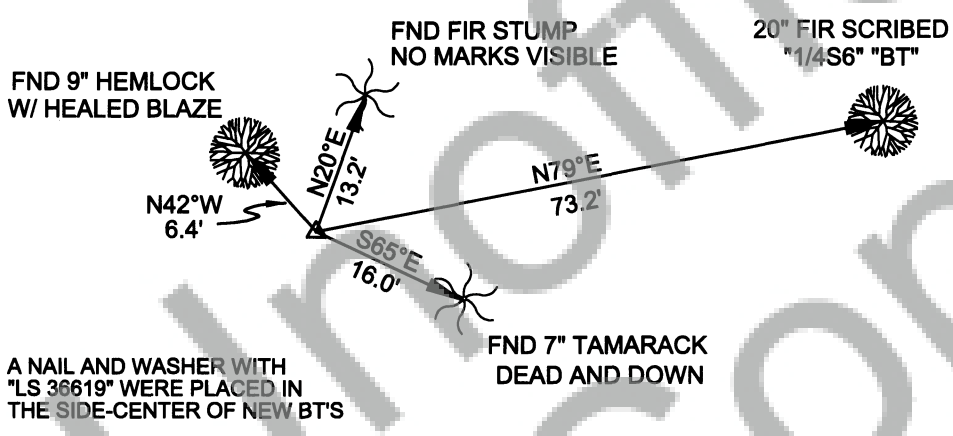
TOWNSHIP 5 N RANGE 10 E SECTION 6

TYPE OF MONUMENT; TIES TO BEARING TREES, OBJECTS, etc. (SKETCH)

FOUND 3.5" ALUMINUM CAP
ON 2" ALUMINUM PIPE

ALL BEARING TREES
WERE PAINTED AND SIGNED

CAP DESCRIPTION:



REMARKS: (History of Corner, etc.)

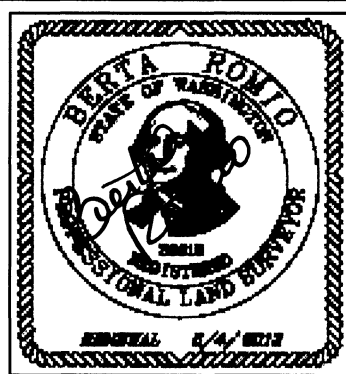
CORNER HISTORY:

1914- G.L.O. ORIGINAL SURVEY BY FREDERICK W. RASE

1989- ORIGINAL EVIDENCE OF NE BT FOUND, NEW REFERENCES AND MONUMENT SET

DIRECTIONS:

From the Mt. Adams Ranger Station, follow SR141 3.4 mi. to Forest Rd. 86. Go south on 86 1.1 mi to Forest Rd. 8620. Follow 8620 for approx. 1.6 mi, then walk south +/-400 ft. to corner



NAME BERTA ROMIO, RLS36619
DATE 10/25/2012
SIGNATURE Berta Romio