

LAND CORNER RECORD

GRANTOR/ SURVEYOR/ PUBLIC OFFICER: This corner record correctly represents work performed by me or under my direction in conformance with the Surveying Recording Act.

COMPANY OR AGENCY: LONGVIEW TIMBER

ADDRESS: PO BOX 667  
LONGVIEW, WA 98632



10-5-2012

GRANTEE: PUBLIC

SEAL/SIGNATURE/DATE

LEGAL: SECTION 32 TWP: 3 NORTH RGE: 5 EAST CORNER CODE: X-5  
ADDITIONAL IDENTIFIER: (e.g., BLM designation, street intersection, plat, block, lot, etc.)

COUNTY: SKAMANIA

WASHINGTON PLANE COORDINATES: N: E:  
ORDER: ZONE: DATUM (Date of adjustment):

CORNER INFORMATION: Provide: (1) Pertinent History, (2) Evidence Found, and (3) Corner Perpetuation Information (diagram the references; provide the date of work; and, if applicable, reference to a map of record and/or the field book/page no. ) Additional space is available on the back.

This corner was originally established by Deputy surveyor Robert A Webster in 1882, under contract #385. Webster notes setting a post with the following bearing trees.

50" Fir bears S64°W at 49 Links  
12" Hemlock bears N73°W at 48 Links

In 1981 Olson Engineering set 1" iron pipe with brass cap N64°E 32.34' from a 50" rotted Fir snag (GLO call was S64°W 32.34'). Olson could only surmise with two BT calls in west quadrant one was reversed also taking into account creek calls this could be the only fit. The other GLO call was to a Hemlock N73°W at 31.68' which root remains were found. Olson also notes finding 4" of the original post set in a mound of rocks at corner location, see record of survey book 2 page 96. In 1981 Olson added the following references

60" Snag bears S32°W at 7.33' with railroad spike at base and location tag.  
26" Fir bears S49°W at 64.59' with railroad spike at base and location tag.  
50" Snag bears N35°W at 35.90' with railroad spike at base and location tag.

In 2012 Longview Timber survey crew found the corner Olson set and bearing trees listed in survey along with a 6' steel fence post north 1.0' from corner also painted bearing trees to Longview Timber standards.

60" Snag bears S32°W at 7.33' with railroad spike at base and location tag.  
36" Fir bears S49°W at 64.59' with railroad spike at base and location tag.  
50" Snag bears N35°W at 35.90' with railroad spike at base and location tag.  
New reerence:  
9" Hemlock S83°E at 4.30' scribed [1/4S32BT] with spike sde center and location tag.

**MARK THE CORNER LOCATION BELOW AND FILL IN THE CORNER CODE BLANK ON THE OTHER SIDE:**

For corners at the intersection of two lines, the corner code is the alphanumeric coordinate that corresponds to the appropriate intersection of lines.

For corners that are only on one line, the corner code is the line designation and the related line segment: i.e., a corner on line 5 between "B" and "C" is designated BC-5.

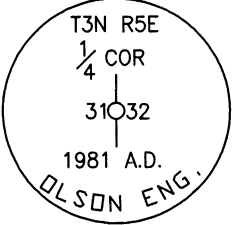
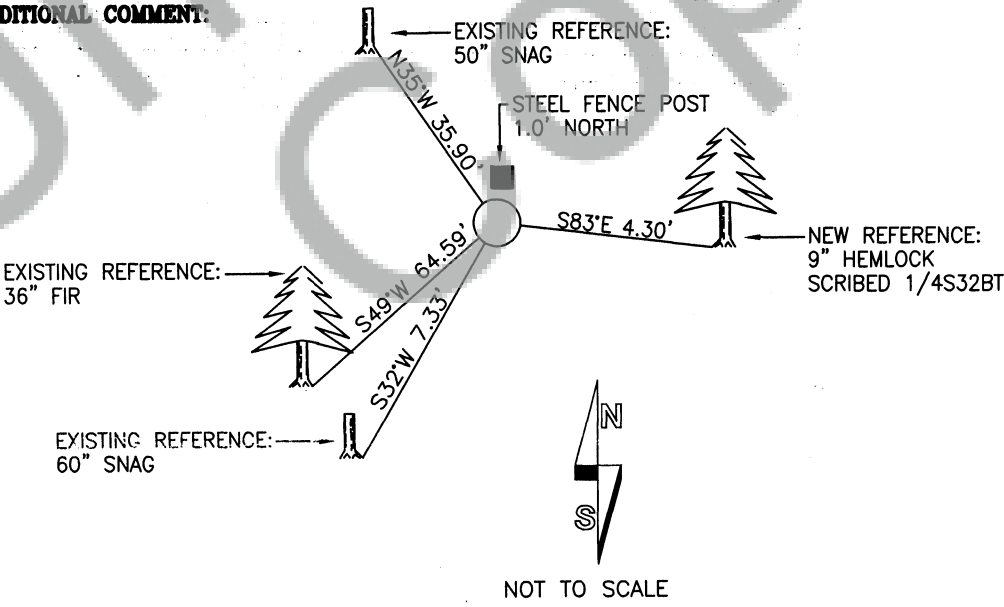
For corners that are between lines, the corner code is both line segments; i.e., a corner in the SE 1/4 of the SE 1/4 of section 18 is designated MN 4-5.

	1	2	3	4	5	6	7	8	9	10	11	12	13	14	15	16	17	18	19	20	21	22	23	24	25
A																									
B																									
C		6					5				4				3				2				1		
D																									
E																									
F																									
G																									
H		7					8				9				10				11				12		
J																									
K																									
L		18					17				16				15				14				13		
M																									
N																									
O																									
P		19					20				21				22				23				24		
Q																									
R																									
S																									
T																									
U		30					29				28				27				26				25		
V																									
W																									
X		31					32				33				34				35				36		
Y																									
Z																									

RCW 58.09.060 (2) requires the following information on this form: an accurate description and location, in reference to the corner position, of all monuments and accessories (a) found at the corner and (b) placed or replaced at the corner; (c) basis of bearings used to describe or locate such monuments or accessories; and (d) corollary information that may be helpful to relocate or identify the corner position.

**SPACE FOR ADDITIONAL COMMENT:**

NOTES:



BRASS CAP DETAIL