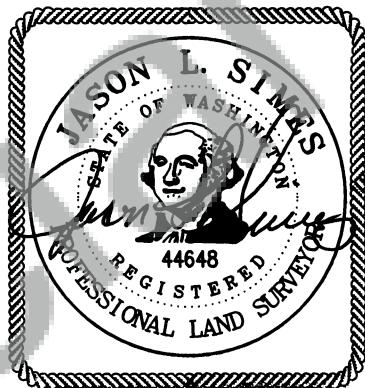


LAND CORNER RECORD

GRANTOR/ SURVEYOR/ PUBLIC OFFICER: This corner record correctly represents work performed by me or under my direction in conformance with the Surveying Recording Act.

COMPANY OR AGENCY: LONGVIEW TIMBER

ADDRESS: PO BOX 667
LONGVIEW, WA 98632



10-5-2012

GRANTEE: PUBLIC SEAL/SIGNATURE/DATE
LEGAL: SECTION 9 TWP: 2 NORTH RGE: 5 EAST CORNER CODE: J-13
ADDITIONAL IDENTIFIER: (e.g., BLM designation, street intersection, plat, block, lot, etc.)

COUNTY: SKAMANIA

WASHINGTON PLANE COORDINATES: N: E:
ORDER: ZONE: DATUM (Date of adjustment):

CORNER INFORMATION: Provide: (1) Pertinent History, (2) Evidence Found, and (3) Corner Perpetuation Information (diagram the references; provide the date of work; and, if applicable, reference to a map of record and/or the field book/page no.) Additional space is available on the back.

This corner was originally established by Deputy surveyor Lewis Van Fleet in 1860, under contract #47. Van Fleet notes setting a post with the following bearing trees.

- 7" Vine Maple bears S52°W at 15 Links
- 6" Vine Maple bears S35°E at 16 Links
- 7" Vine Maple bears S56°W at 21 Links
- 10" Hemlock bears N06°E at 20 Links

In 1982 Olson Engineering set corner by double proportion. Olson notes setting brass cap on 1" iron pipe with the following bearing trees.

- 56" Stump w/rr spike N32°W 25.3' (Found January 2012)
- 96" Stump w/rr spike S38°E 34.15' (Found January 2012)
- 26" Fir w/3 blazes S40°W 33.88' now a stump (Found January 2012)

In 2012 Longview Timber survey crew found corner Olson set and bearing trees listed in survey along with a 6' steel fence post south 1.0' from corner.

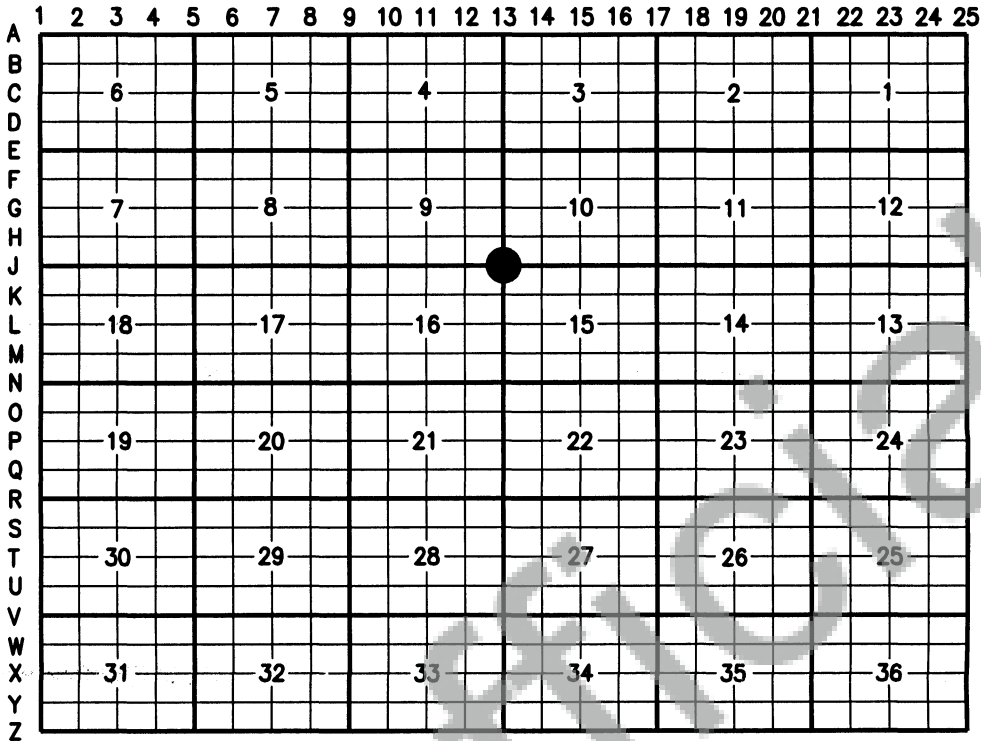
- NEW REFERENCES:
- 10" Fir bears N13E at 8.40' scribed T2NR5ES10BT with 8" spike at side center.
 - 8" Fir bears S37°E at 24.28' scribed T2NR5ES15BT with 8" spike at side center.
 - 13" Fir bears S20°W at 23.70' scribed T2NR5ES16BT with 8" spike at side center.
 - 10" Hemlock bears S80W at 16.05' scribed T2NR5ES16BT with 8" spike at side center.

MARK THE CORNER LOCATION BELOW AND FILL IN THE CORNER CODE BLANK ON THE OTHER SIDE:

For corners at the intersection of two lines, the corner code is the alphanumeric coordinate that corresponds to the appropriate intersection of lines.

For corners that are only on one line, the corner code is the line designation and the related line segment: i.e., a corner on line 5 between "B" and "C" is designated BC-5.

For corners that are between lines, the corner code is both line segments; i.e., a corner in the SE 1/4 of the SE 1/4 of section 18 is designated MN 4-5.



RCW 58.09.060 (2) requires the following information on this form: an accurate description and location, in reference to the corner position, of all monuments and accessories (a) found at the corner and (b) placed or replaced at the corner; (c) basis of bearings used to describe or locate such monuments or accessories; and (d) corollary information that may be helpful to relocate or identify the corner position.

SPACE FOR ADDITIONAL COMMENT:

NOTES:

