

BOUNDARY LINE ADJUSTMENT SURVEY
for
STEVE HANSEN

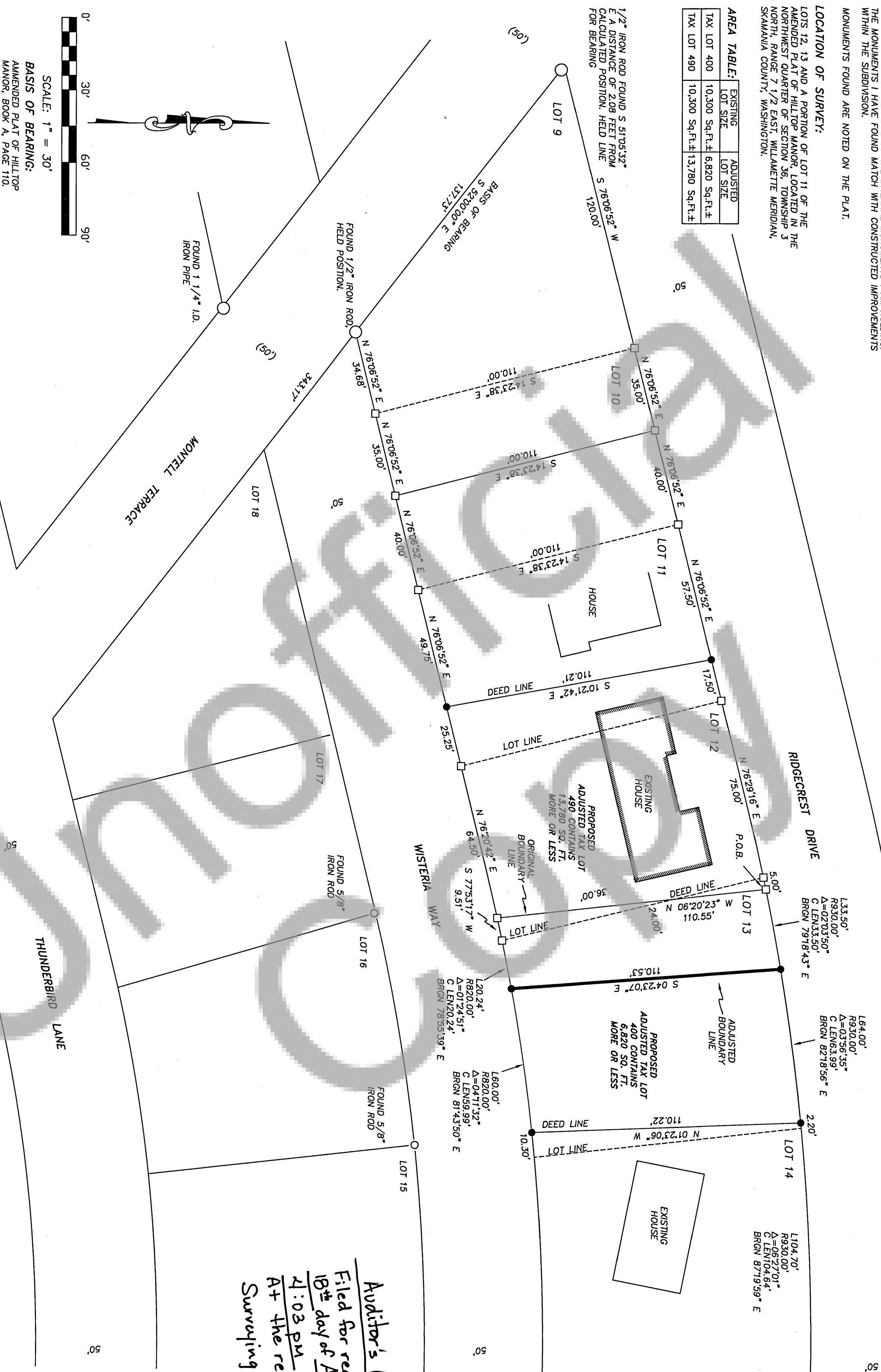
NARRATIVE:
THE PURPOSE OF THIS SURVEY WAS TO DETERMINE OUR CLIENTS PROPERTY BOUNDARY AND COMPLETE A BOUNDARY LINE ADJUSTMENT. THE BOUNDARY RESOLUTION WAS BASED ON ORIGINAL MONUMENTATION FOUND WITHIN THE AMENDED PLAT OF HILLTOP MANOR. THE MEASUREMENTS BETWEEN MONUMENTS FIT WELL WITH THE CALCULATED POSITIONS. I HELD THE BEST FIT MONUMENT CONFIGURATION. I DID FIND PROBLEMS EXIST ON THE EASTERLY BOUNDARY OF SAID AMENDED HILLTOP MANOR. THE BOUNDARY RESOLUTION IS WITHIN THE PLAT SO I DID NOT EXPLORE THIS DISCREPANCY FURTHER DUE TO THE INTERVAL MONUMENTS I AM HOLDING. THE MONUMENTS I HAVE FOUND MATCH WITH CONSTRUCTED IMPROVEMENTS WITHIN THE SUBDIVISION.

MONUMENTS FOUND ARE NOTED ON THE PLAT.

LOCATION OF SURVEY:

LOTS 12, 13 AND A PORTION OF LOT 11 OF THE AMENDED PLAT OF HILLTOP MANOR, LOCATED IN THE NORTHWEST QUARTER OF SECTION 36, TOWNSHIP 3 NORTH, RANGE 7 1/2 EAST, WILLAMETTE MERIDIAN, SKAMANIA COUNTY, WASHINGTON.

AREA TABLE:		EXISTING LOT SIZE	ADJUSTED LOT SIZE
TAX LOT 400	10,300 Sq.Ft.±	6,820 Sq.Ft.±	
TAX LOT 490	10,300 Sq.Ft.±	13,780 Sq.Ft.±	



SIGNATURES:

THIS BOUNDARY LINE ADJUSTMENT IS EXEMPT FROM CITY AND STATE PLATTING REGULATIONS AS PROVIDED BY RCW 65.129(4)(b)

PLANNING ADMINISTRATOR

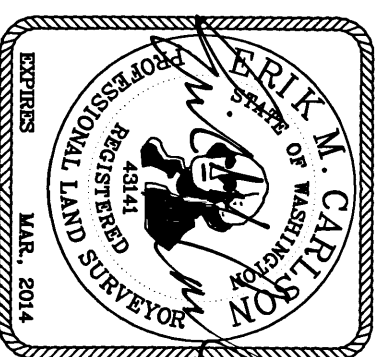
4-8-2012

EQUIPMENT

TOPCON GPT-3005W WITH A 5 SECOND HORIZONTAL ACCURACY, LAST INSPECTED IN SEPTEMBER, 2009, BY PORTLAND PRECISION INSTRUMENT CO. TRAVERSE CLOSURES CONTAINED A MAXIMUM 4" ANGULAR ADJUSTMENT AND A MAXIMUM COMPASS ADJUSTED ERROR OF CLOSURE OF 1 : 5000. ANGLES WERE ADJUSTED BEFORE THE COMPASS ADJUSTMENT WAS APPLIED.

LEGEND:

- SET 5/8" X 30" IRON ROD WITH PLASTIC CAP
- FOUND MONUMENT OF RECORD
- CALCULATED, NOT FOUND OR SET
- () DEED OR PLAT CALL



TERRA SURVEYING

DATE: September 22, 2011
SCALE: 1" = 30'
PROJECT: 11003
P.O. BOX 617
HOOD RIVER, OREGON 97031
PHONE & FAX: (541) 386-4531
E-Mail: terra@gorge.net

Auditor's Certificate
Filed for record this
18th day of April 2012 at 80487
4:03 PM in AF 20121
At the request of Terra
Surveying Melvin Anderson
County Deputy
Auditor

AF 20121 ~~80487~~
80487