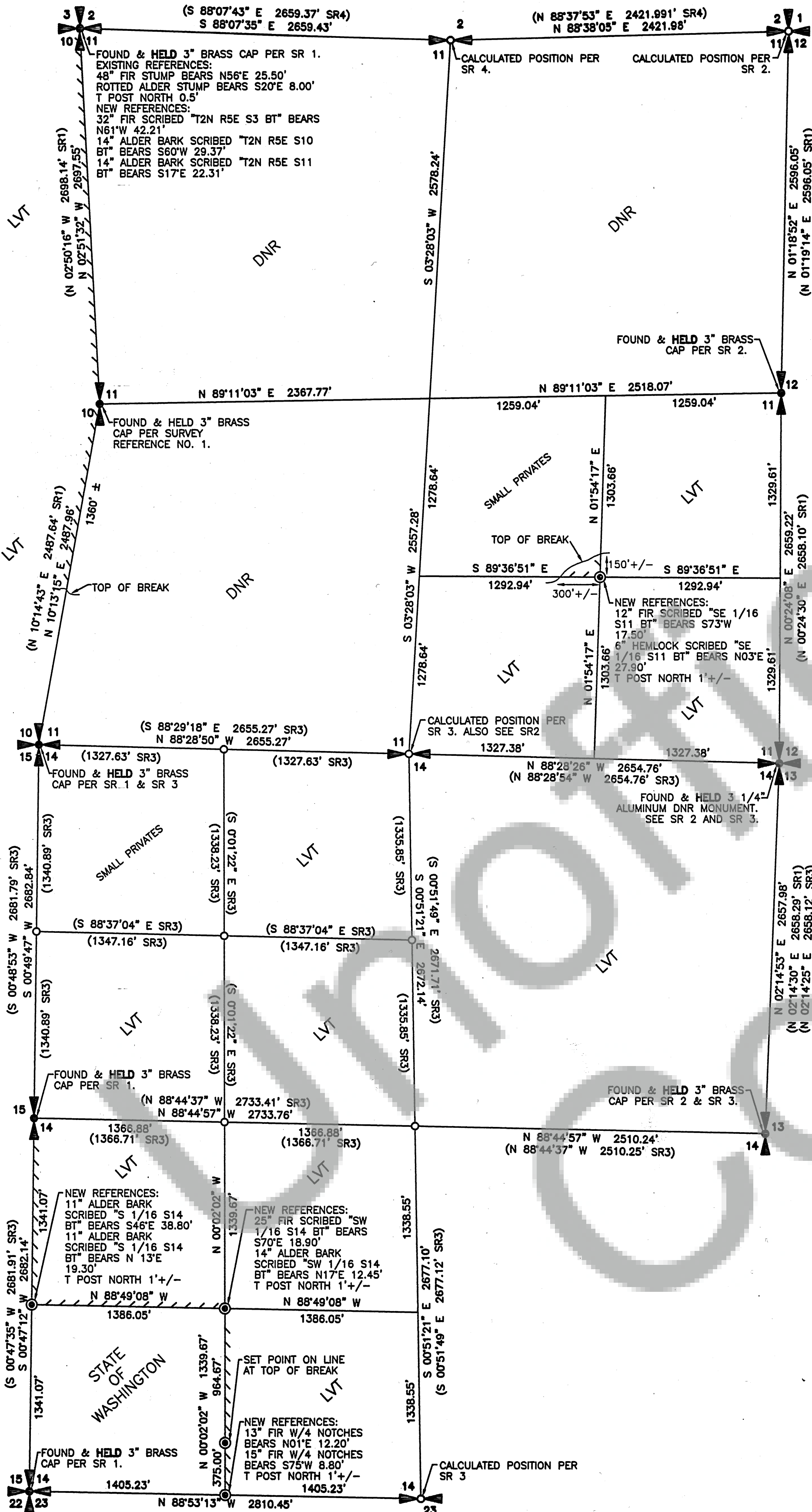


NOTE:
NEW REFERENCES HAVE A LOCATION TAG ABOVE THE SCRIBE AND A TACK WITH A BRASS WASHER
INSCRIBED "SINES 44648" IN THE FACE ALL ORIENTED TOWARD THE MONUMENT. THERE IS AN 8" SPIKE AT
SIDE CENTER. THE BEARINGS TO THE REFERENCE WERE TAKEN WITH A HAND COMPASS WITH THE
DECLINATION SET TO 16° EAST. THE BEARINGS ARE TAKEN TO THE TREE, DISTANCES WERE MEASURED TO
THE SPIKE WITH A 50' BUCKERS TAPE.

RECORD OF SURVEY

IN A PORTION OF THE
SE 1/4 OF THE SE 1/4 AND THE
WEST LINE OF SECTION 11 & IN THE
SE 1/4 AND NW 1/4 OF THE SW 1/4
OF SECTION 14,
T2N, R5E, W.M.,
SKAMANIA COUNTY, WASHINGTON
MARCH 6, 2012



0 600 1200 1800

BASIS OF BEARING: NAD 83/09, WASHINGTON STATE PLANE
COORDINATE SYSTEM, SOUTH ZONE, US SURVEY FEET.

LEGEND:

- INDICATES CALCULATED POSITION
- INDICATES MONUMENT FOUND AS NOTED
- ⊙ INDICATES 5/8" x 3/8" IRON REBAR WITH ORANGE PLASTIC CAP INSCRIBED "WA LS44648-OR 83256PLS" SET
- () INDICATES RECORD INFORMATION PER SURVEY REFERENCE NUMBER
- INDICATES LINE MARKED WITH 1/2" x 72" FIBER GLASS RODS WITH RED AND WHITE RIBBON. TREES ALONG LINE PAINTED WITH BLUE PAINT.
- SR INDICATES SURVEY REFERENCE

SURVEY REFERENCE:

- 1) OLSON SURVEY, BOOK 2, PAGES 105-106
- 2) LAIRD SURVEY, BOOK 3, PAGES 68-72
- 3) FORD SURVEY, BOOK 3, PAGE 325
- 4) HIDEAWAY II, BOOK B, PAGE 4

DEED REFERENCE:

GRANTOR: BOISE CASCADE CORPORATION
GRANTEE: LONGVIEW FIBRE COMPANY
AF NO. 106107

DEED REFERENCE:

GRANTOR: LONGVIEW FIBRE COMPANY
GRANTEE: LONGVIEW TIMBERLANDS LLC
AF NO. 2007166332

NARRATIVE:

THE PURPOSE OF THIS SURVEY WAS TO SET THE CORNERS AND MARK THE LINES AS SHOWN HEREON FOR LONGVIEW TIMBERLANDS, LLC FOR FUTURE LOGGING PURPOSES.
FOR THIS SURVEY I ESTABLISHED STATIC PAIRS USING LEICA 1200 GPS RECEIVERS NEAR THE EAST QUARTER CORNER OF SECTION 14, THE EAST QUARTER CORNER OF SECTION 11 AND THE NORTH QUARTER CORNER OF SECTION 11. THE EAST QUARTER CORNER OF SECTION 14 WAS DIRECTLY OCCUPIED. SAID STATIC POINTS WERE CONSTRAINED TO CORPS POINTS "GWN5" AND "NWB6". A COMBINED SCALE FACTOR OF 0.99997886461 WAS COMPUTED AND APPLIED. THE DISTANCES SHOWN HEREON ARE GROUND. THE BEARINGS SHOWN HEREON ARE GRID. I THEN RAN A SERIES OF RANDOM CLOSED TRAVERSES TO TIE THE CONTROLLING CORNERS. I THEN RAN CLOSED TRAVERSES ALONG THE LINES SHOWN AS POSTED, BLAZED AND PAINTED. ALL CORNERS SHOWN AS FOUND AND OR SET WERE TIED RADIALY FROM SAID TRAVERSES.



3-11-2012

SURVEYOR'S CERTIFICATE

THIS MAP CORRECTLY REPRESENTS A SURVEY MADE BY ME OR UNDER MY DIRECTION IN CONFORMANCE WITH THE REQUIREMENTS OF THE SURVEY RECORDING ACT AT THE REQUEST OF LONGVIEW TIMBER IN MARCH, 2012.

Jason L. Sines 3-11-2012
JASON L. SINES, PROFESSIONAL LAND SURVEYOR, LS# 44648

AUDITOR'S CERTIFICATE

FILED FOR RECORD THIS 4th DAY OF April 20 12 AT 1:19 P.M. IN AF 2012180400 SURVEYS AT PAGE 2
AT THE REQUEST OF LONGVIEW TIMBER CORPORATION.

Timothy O. Todd
DEPUTY COUNTY AUDITOR

LONGVIEW TIMBER CORPORATION MAKES NO WARRANTIES AS TO MATTERS OF UNWRITTEN TITLE SUCH AS ADVERSE POSSESSION, ACQUISITION, ESTOPPEL, ETC.

A FIELD TRAVERSE WAS PERFORMED USING A NIKON NIVO 3C THREE SECOND TOTAL STATION. THE FIELD TRAVERSE MET THE MINIMUM STANDARDS FOR SURVEYS AS DESIGNATED IN WAC 332-130-090. ALL CORNERS NOTED AS FOUND WERE VISITED IN JANUARY 2012.

SCALE: 1"=600'

JOB NO. 2N5E11

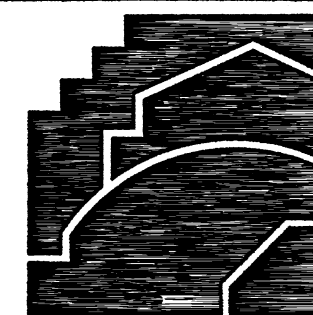
DATE: 3-6-2012

CALC BY: JLS

DRAWN BY: JLS

CHECKED BY: EVB

SHEET 1 OF 1



LONGVIEW TIMBER
CORPORATION
10 INTERNATIONAL WAY
LONGVIEW, WA 98632