

Found corners

**NE corner Section 32-T3N-R6E**  
Found a 3/4" iron pipe with 3" brass cap as per reference surveys # 5 and 6 (2011).

Found accessories:  
- 12" hemlock with scribe, nail and tag N06°W 17.10'  
- 26" fir with healed face, nail and tag N62°E 31.60'  
- 22" fir with healed face, nail and tag S32°E 43.65'  
- 16" alder with bark scribe, nail and tag S59°W 21.60'

**SE corner Section 32-T3N-R6E**  
Found 4" x 4" concrete monument with 3" DNR brass cap as per reference survey # 5 (2011).

Found accessories:  
- 24" hemlock stump with nail and tag S76°W 15.59'  
- 52" hemlock stump with scribe, nail and tag S18°W 39.60'  
- 38" cedar stump with nail and tag S15°E 17.06'  
- 27" fir with healed scribe, nail and tag S35°E 43.60'

**SW corner Section 31-T3N-R6E**  
Found 1" iron pipe with 3" Skamania County Engineering Department brass cap as per reference surveys # 2-4 (2011).

Found accessories:  
- 18" alder with scribe, nail and tag N66°W 36.97'  
- 18" alder with scribe, nail and tag N10°W 40.46'  
- 57" fir stump (OBT) with nail and tag S83°E 5.38'  
- 28" fir with scribe, nail and tag S38°W 31.70'

**W 1/4 corner Section 6-T2N-R6E**  
Found 1/2" with cap LS 13518 as per reference surveys # 2 and 3 (2011). Corner was set by single proportion on reference survey # 2 and later found on reference survey # 3. The rebar bears S42°38'55"E 0.22' from single proportion position calculated by this survey.

Found accessories:  
- 7" fir with nail and tag N43°W 5.71'  
- 15" fir with nail and tag N74°E 9.36'  
- 14" fir with nail and tag S16°E 7.20'

**SW corner Section 6-T2N-R6E**  
Found 1/2" with an cap LS 13518 as per reference surveys # 2 and 3 (2011). Corner was set by single proportion on reference survey # 2 and later found on reference survey # 3. No accessories were found with this corner.

New accessories:  
- 25" fir with 40d spike in center side N51°E 14.22'  
- 16" hemlock growing out of old growth hemlock stump with 40d spike in center side S70°E 28.95'  
- 18" fir with 40d spike in center side S45°W 14.43'  
- 16" fir with 40d spike in center side N79°W 26.70'

Calculated corners

**W 1/4 corner Section 31-T3N-R6E**  
Corner declared lost by DNR and calculated by single proportion. Position calculated from reference surveys # 3 and 4 holding field ties to the SW corner of Section 31-T3N-R6E and the SW corner of Section 6-T2N-R6E.

**NW corner Section 31-T3N-R6E**  
Corner declared lost by DNR and calculated by single proportion. Position calculated from reference surveys # 3 and 4 holding field ties to the SW corner of Section 31-T3N-R6E and the SW corner of Section 6-T2N-R6E.

**NW corner Section 29-T3N-R6E**  
Position established from GLO ground calls on reference survey # 6 calculated by combining reference surveys # 5 and 6 and holding field ties to the SE and NE corners of Section 32 (not visited).

**NE corner Section 29-T3N-R6E**  
Position of monument set from found bearing trees calculated as per reference survey # 5 holding field ties to the SE and NE corners of Section 32. (not visited)

**E 1/4 corner Section 29-T3N-R6E**  
Position calculated by single proportion as reference surveys # 5 and 6 (not visited)

**NW corner Section 32-T3N-R6E**  
Position calculated by double proportion holding the NW corner of Section 29 and the W 1/4 corner of Section 32 for the North-South proportion and the NW corner of Section 31 and the NE corner of Section 32 for the East-West proportion. This position was calculated for the purpose of establishing the timber cutting agreement lines only. No independent search was made for this corner.

Calculated corners (continued)

**W 1/4 corner Section 32-T3N-R6E**  
During the summer of 2011 Jason Simes, PLS of Longview Timber Co. performed preliminary reconnaissance surveys in Sections 29, 30, 31 and 32 to search for GLO corners and determine the feasibility of undertaking a true cadastral retracement survey in Section 32. In the course of that survey he found the remains of a 42" fir stump with a burnt out face, but no visible scribe (GLO 40" fir N80°E 7.26') that he accepted as an original bearing tree. His survey established a mathematical position for the corner holding record bearing and distance from the found original bearing tree. The Simes survey also tied the NE and SE corners of Section 32. This survey computes the W 1/4 corner holding the position derived from the Simes survey and our field ties to the two section corners. This position was not independently visited and verified by this survey.

**W 1/4 corner Section 29-T3N-R6E**  
**N 1/4 corner Section 29-T3N-R6E**  
**N 1/4 corner Section 31-T3N-R6E**  
**N 1/4 corner Section 32-T3N-R6E**

Positions calculated by single proportion for the purpose of establishing the timber cutting agreement lines only. No independent search was made for any of these corners.

**S 1/4 corner Section 31-T3N-R6E**

Position declared lost and calculated by single proportion, no monument set. In December of 2011 an extensive search was performed for this corner. Using an alignment for the south line of T3N-R6E derived from field ties to the SW corner of Section 31 and the SE corner of Section 32 we navigated in to the approximate position for this corner using hand held GPS units. We found the GLO ridge call 2 chains East of the corner to be easily ascertainable and used it to fix an easting for our field search. After measuring the 2 chain call West from the ridge we found there were many burnt snags in the area. Unfortunately, all of the snags were in such poor shape that no discernible markings, hooks or faces could be found. One possible stump pattern was found that would have fit the ridge call within 30 feet. However, both of the found snags used to create the pattern were fir and the GLO survey calls for a fir and a hemlock. Since no concrete original evidence could be found this corner was declared lost.

**E 1/4 corner Section 32-T3N-R6E**

Position calculated by single proportion as per reference survey # 5. This corner was visited during this survey but was found to be disturbed by a slide. Both of the accessories established on reference survey # 5 still exist, but give the terrain and the recent slide activity it was decided that it was impractical to reset the corner.

Set corners

**SW corner Section 32-T3N-R6E**

No acceptable GLO evidence found, position calculated by single proportion. Set a 1" iron pipe with 3" brass cap stamped per the BLM manual at the calculated position (2011).

New accessories:  
- 8" fir scribed "T3N R6E S31 BT" N68°W 30.87'  
- 8" fir scribed "T3N R6E S32 BT" N19°E 5.32'  
- 27" fir scribed "T2N R6E S5 BT" S62°E 23.03'  
- 6" fir scribed "T2N R6E S6 BT" S73°W 10.26'

All accessories have a 40d spike in center side and an aluminum tag facing the corner.

**S 1/4 corner Section 32-T3N-R6E**

No acceptable GLO evidence found, position calculated by single proportion. Set a 3/4" drive rod with 3" aluminum cap stamped per the BLM manual at the calculated position (2011).

New accessories:  
- 22" fir scribed "T3N R6E 1/4 S32 BT" N61°W 4.87'  
- 19" fir scribed "T2N R6E 1/4 S6 BT" S17°W 32.50'

Both accessories have a 40d spike in center side and an aluminum tag facing the corner.

**Agreement Corner # 1**

Set 1/2" rebar with cap LS 36792 at the calculated position (2011).

New accessories:  
- 26" fir scribed "AC 1 BT" N04°W 26.12'  
- 18" hemlock scribed "AC 1 BT" N69°E 24.77'

Both accessories have a 40d spike in center side and an aluminum tag facing the corner.

Set corners (continued)

**Agreement Corner # 2**

Set 1/2" rebar with cap LS 36792 at the calculated position (2011).

New accessories:  
- 18" fir scribed "AC 2 BT" N68°W 23.75'  
- 24" fir scribed "AC 2 BT" N32°W 40.81'

**Agreement Corner # 3**

Set 1/2" rebar with cap LS 36792 at the calculated position (2011).

New accessories:  
- 22" fir scribed "AC 3 BT" N09°W 18.45'  
- 11" fir scribed "AC 3 BT" N71°E 21.77'

**Agreement Corner # 4**

Set 1/2" rebar with cap LS 36792 at the calculated position (2011).

New accessories:  
- 9" fir scribed "AC 4 BT" N72°W 22.27'  
- 11" fir scribed "AC 4 BT" N18°W 25.76'

**Agreement Corner # 5**

Set 1/2" rebar with cap LS 36792 at the calculated position (2011).

New accessories:  
- 24" fir scribed "AC 5 BT" S44°W 4.92'  
- 11" fir scribed "AC 5 BT" N23°W 24.64'

**Agreement Corner # 6**

Set 1/2" rebar with cap LS 36792 at the calculated position (2011).

New accessories:  
- 19" fir scribed "AC 6 BT" N64°W 32.89'  
- 10" fir scribed "AC 6 BT" N09°W 34.26'

**Agreement Corner # 7**

Set 1/2" rebar with cap LS 36792 at the calculated position (2011).

New accessories:  
- 10" fir scribed "AC 7 BT" N66°W 16.65'  
- 17" hemlock scribed "AC 7 BT" N12°E 20.34'

All Agreement corner accessories have a 40d spike in center side and an aluminum tag facing the corner.

Agreement Line Description

A timber harvest agreement line in Section 32, Township 3 North, Range 6 East, W.M. in Skamania County, Washington being described as follows:

COMMENCING at the northeast corner of said Section 32 as the same as depicted on Record of Survey recorded under Auditor's File Number 2006160198, Records of Skamania County, Washington; thence S00°27'24"W along the west line of said Section 32 a distance of 5084.30 feet to the southeast corner of said Section 32; thence S89°48'03"W along the south line of said Section 32 a distance of 5245.12 feet to the southwest corner of said Section 32 and the True Point of Beginning of said agreement line; thence N01°10'04"W along said agreement line a distance of 1319.32 feet; thence S89°40'24"E along said agreement line a distance of 1330.38 feet; thence N00°20'31"W along said agreement line a distance of 1306.925 feet; thence S89°09'44"E along said agreement line a distance of 1349.59 feet; thence N00°29'58"E along said agreement line a distance of 1263.57 feet; thence S89°19'34"E along said agreement line a distance of 1309.77 feet; thence N00°28'41"E along said agreement line a distance of 1267.325 feet; thence S89°29'25"E along said agreement line a distance of 1309.29 feet to the northeast corner of said Section 32 and the terminus of said line.

Record of Survey for the purpose of establishing a timber cutting agreement lines being a portion of Section 32, Township 3 North, Range 6 East, W.M. in Skamania County, Washington.  
(Page 1 of 3 Pages)

Basis of bearings: True bearings as derived from GPS observations. Convergence angle at the SE corner of Section 32 is -01°15'28".

The distances shown hereon are ground scale. To convert to grid distances multiply by a combined scale factor of 0.99989579.

● Found corner as noted  
○ Set corner as noted  
⊙ Set 1/2" rebar with cap LS 36792 "agreement corner"  
⊙ Set 1/2" rebar with cap LS 36792 "line only"  
⊕ Calculated position  
/// Blazed, painted and flagged property line  
/// Blazed, painted and flagged agreement line

Reference Surveys:  
1) GLO survey Township 3 North, Range 6 East by C.E. Sears under contract 287 (1883)  
2) B.J. Shincke, PLS 13518, Book 2, Page 271 (1979)  
3) H.T. Laird, Jr., PLS 21490, Book 3, Pages 68-71 (1992)  
4) H.T. Laird, Jr., PLS 21490, Book 3, Page 99 (1992)  
5) G.J. Hampton, PLS 16087, AFN 2006160198 (2006)  
6) G.J. Ford, PLS 22330, AFN 2006162403 (2006)  
7) Unrecorded preliminary survey of portions of Sections 29, 30, 31 and 32, Township 3 North, Range 6 East by Jason L. Simes, PLS 44648, copies of which are on file at the offices of Longview Timber Co. in Longview, WA and Butler Surveying, Inc. in Chehalis, WA.

Method of Survey: GPS observations using Topcon Hiper-RTK receivers and closed loop field traverses using a Topcon GTS-220 (00°00'05") total station. This survey meets or exceeds precision requirements as set forth in WAC 332-130-090.

Survey narrative:

The purpose of this survey is to create, monument and mark timber cutting agreement lines between the ownerships of The State of Washington and Longview Timber Co. in Section 32, Township 3 North, Range 6 East, W.M. in Skamania County, Washington.

The south and west portions of Township 3 North, Range 6 East were originally surveyed in 1883 by GLO surveyor C.E. Sears working under contract 287. Much of the original evidence from the original 1883 survey was destroyed when this township was part of the "Yacolt Burn" forest fire that started in September of 1902.

In the summer of 2011 Jason L. Simes, PLS of Longview Timber Co. undertook an extensive reconnaissance survey in Sections 29, 30, 31 and 32 to search for evidence of the GLO corners needed to survey Section 32. The results of the reconnaissance survey were consistent with modern survey records in the area in finding that most of the corners and GLO accessories have been lost to the Yacolt Burn. Simes also found, consistent with modern survey records, that GLO surveyor Sears has a mathematical bust in his ground call measurements rendering retracement by following the ground calls generally unreliable. In his final analysis Simes deduced that in order to perform a true cadastral retracement survey of Section 32 nearly every corner in the southwest quarter of the township would have to be searched for with the likely result being extensive double and single proportion solutions for the controlling corners.

During negotiations, it was decided by The State of Washington and Longview Timber Co. that the full retracement survey option was cost prohibitive and the two sides agreed to create timber cutting agreement lines to be used for the harvest of trees through the "stairstep" portion of their respective ownerships in Section 32. The stairstep agreement lines are created by using standard subdivision methods relying upon the previously surveyed east line of Section 32, the dependent resurvey of the south line of Sections 31 and 32 as depicted hereon, the found position for the West 1/4 corner of Section 32 as depicted hereon and a modeled double proportion position for the northwest corner of Section 32 derived from positions for controlling corners computed from surveys of record. As stated and depicted on this survey, multiple corners that could effect the double proportion calculation for the northwest corner of Section 32 have not been independently searched for or verified.

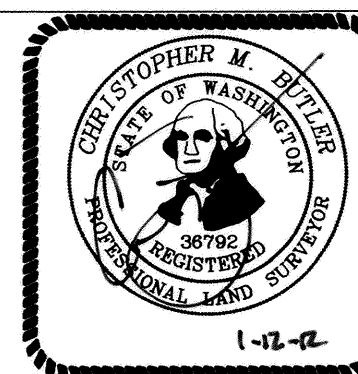
It is the intent of the parties to enter in to a formal timber cutting line agreement using the "agreement line" description contained herein to ratify the "stairstep" line for the current and future use of the parties for timber harvest operations.

Certificate Number: \_\_\_\_\_

Auditor's Certificate  
Filed for record this 24<sup>th</sup> day of January, 2012  
at 10:18 A.M. in Book        of Surveys at Page         
At the request of Butler Surveying, Incorporated  
AF 2012179912 Melina Anderson  
County Auditor  
Deputy

Surveyor's Certificate

This map correctly represents a survey made by me or under my direction in conformance with the requirements of the Survey Recording Act at the request of Longview Timber Co. in January of 2012.



BUTLER SURVEYING INC. 476 NW CHEHALIS AVENUE P.O. BOX 149, CHEHALIS, WA 98532 360/748-8803	
Drawn C. Butler	Date 1-12-2012
Checked <u>CB</u>	Job No. 11-89
Scale 1" = 100'	Sheet 1 of 3



Record of Survey for the purpose of establishing  
timber cutting agreement lines being a portion of  
Section 32, Township 3 North, Range 6 East, W.M.  
in Skamania County, Washington.  
(Page 2 of 3 Pages)

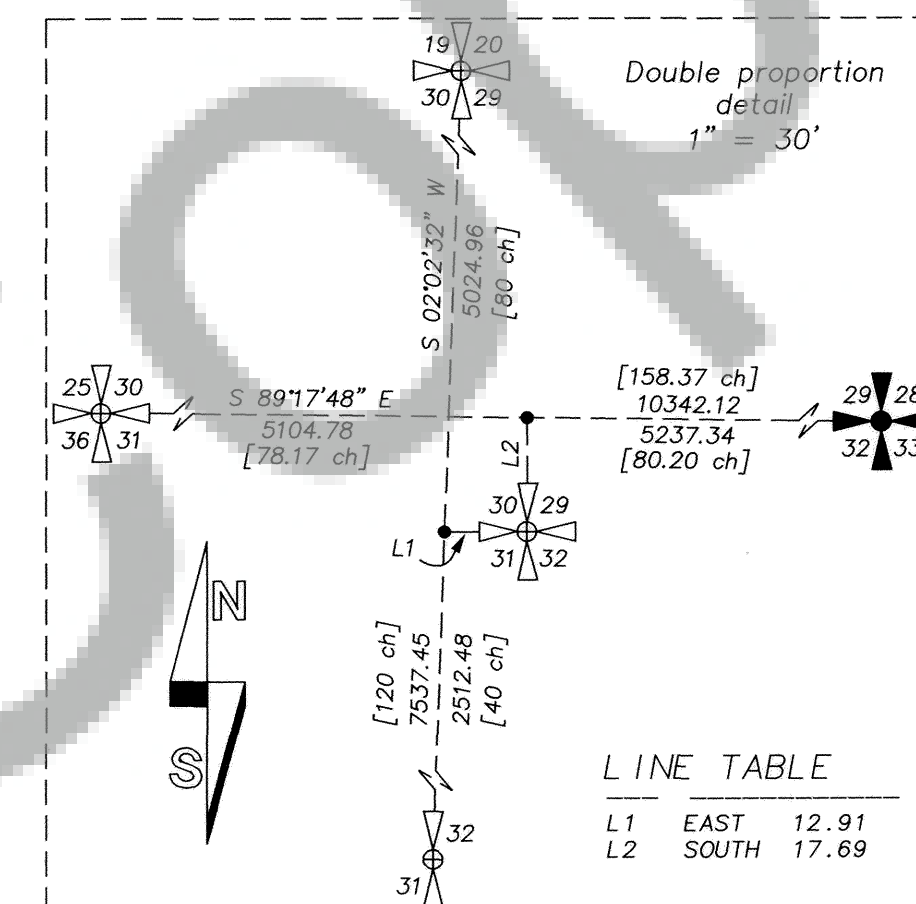


SCALE: 1"=1000 FEET  
0 500 1000 2000

Basis of bearings: True bearings as derived from GPS observations.  
Convergence angle at the SE corner of Section 32 is  $-01^{\circ}15'28''$ .  
The distances shown hereon are ground scale. To convert to grid  
distances multiply by a combined scale factor of 0.99989579.

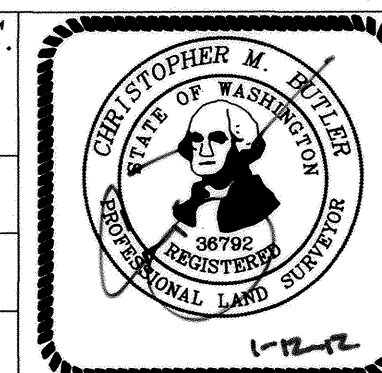
- Found corner as noted
- Set corner as noted
- ⊙ Set 1/2" rebar with cap LS 36792 "agreement corner"
- ⊕ Set 1/2" rebar with cap LS 36792 "line only"
- ⊕ Calculated position
- /// Blazed, painted and flagged property line
- Blazed, painted and flagged agreement line

- Reference Surveys:
- 1) GLO survey Township 3 North, Range 6 East by C.E. Sears under contract 287 (1883)
  - 2) B.J. Shincke, PLS 13518, Book 2, Page 271 (1979)
  - 3) H.T. Laird, Jr., PLS 21490, Book 3, Pages 68-71 (1992)
  - 4) H.T. Laird, Jr., PLS 21490, Book 3, Page 99 (1992)
  - 5) C.J. Hampton, PLS 18087, AFN 2006160198 (2006)
  - 6) G.J. Ford, PLS 22330, AFN 2006162403 (2006)
  - 7) Unrecorded preliminary survey of portions of Sections 29, 30, 31 and 32, Township 3 North, Range 6 East by Jason L. Simes, PLS 44648, copies of which are on file at the offices of Longview Timber Co. in Longview, WA and Butler Surveying, Inc. in Chehalis, WA.



**BUTLER SURVEYING INC.**  
475 NW CHEHALIS AVENUE  
P.O. BOX 149, CHEHALIS, WA 98532  
360/748-8803

Drawn C. Butler	Date 1-12-2012
Checked <i>CB</i>	Job No. 11-89
Scale 1" = 1000'	Sheet 2 of 3



The locations of the Washougal River and Stebbins Creek as depicted hereon were scaled and digitized from a 2006 Google Earth aerial photo and are unsurveyed.

