

LAND CORNER RECORD

GRANTOR/ SURVEYOR/ PUBLIC OFFICER: This corner record correctly represents work performed by me or under my direction in conformance with the Surveying Recording Act.

COMPANY OR AGENCY: LONGVIEW TIMBER

ADDRESS: PO BOX 667
LONGVIEW, WA 98632



GRANTEE: PUBLIC SEAL/SIGNATURE/DATE

LEGAL: SECTION 33 TWP: 3 NORTH RGE: 5 EAST CORNER CODE: V-9
ADDITIONAL IDENTIFIER: (e.g., BLM designation, street intersection, plat, block, lot, etc.)

COUNTY: SKAMANIA

WASHINGTON PLANE COORDINATES: N: E:
ORDER: ZONE: DATUM (Date of adjustment):

CORNER INFORMATION: Provide: (1) Pertinent History, (2) Evidence Found, and (3) Corner Perpetuation Information (diagram the references; provide the date of work; and, if applicable, reference to a map of record and/or the field book/page no.) Additional space is available on the back.

This corner was originally established by Deputy surveyor Robert A Webster in 1882, under contract #385. Webster notes setting a post with the following bearing trees.

- 30" Fir bears N13° 30'E at 74 Links
- 40" Fir bears S15° 30'E at 28 Links
- 12" Hemlock bears S62°W at 7 Links
- 8" Hemlock bears N72°W at 20 Links

In 1982 Olson Engineering set corner from original bearing trees now stumps. Olson notes setting brass cap on 1" iron pipe with the following bearing trees.

- 30" Fir stump N13° 30'E 50.0' (GLO notes 48.84')
- 40" Fir stump S13° 30'E 19.3' (GLO notes S15° 30' at 18.48')

- 16" Fir bears N83°W at 22.84' with railroad spike and three blazes facing corner.
- 16" Fir bears S11°W at 12.05' with railroad spike and three blazes facing corner.
- 18" Fir bears S43°E at 13.11' with railroad spike and three blazes facing corner.
- 14" Fir bears N83°E at 25.03' with railroad spike and three blazes facing corner.

In 2011 Longview Timber survey crew found corner Olson set and bearing trees listed in survey along with a 6' steel fence post south 1.0' from corner.

- 16" Fir now a 18" stump bears N83°W at 22.84' with railroad spike and three blazes facing corner.
- 16" Fir now a 26" bears S11°W at 12.05' with railroad spike and three blazes facing corner.
- 18" Fir now a 24" bears S43°E at 13.11' with railroad spike and three blazes facing corner.
- 14" Fir now a 23" bears N83°E at 25.03' with railroad spike and three blazes facing corner.

MARK THE CORNER LOCATION BELOW AND FILL IN THE CORNER CODE BLANK ON THE OTHER SIDE:

For corners at the intersection of two lines, the corner code is the alphanumeric coordinate that corresponds to the appropriate intersection of lines.

For corners that are only on one line, the corner code is the line designation and the related line segment: i.e., a corner on line 5 between "B" and "C" is designated BC-5.

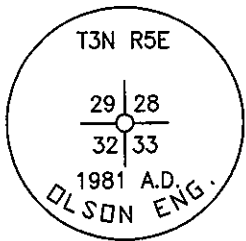
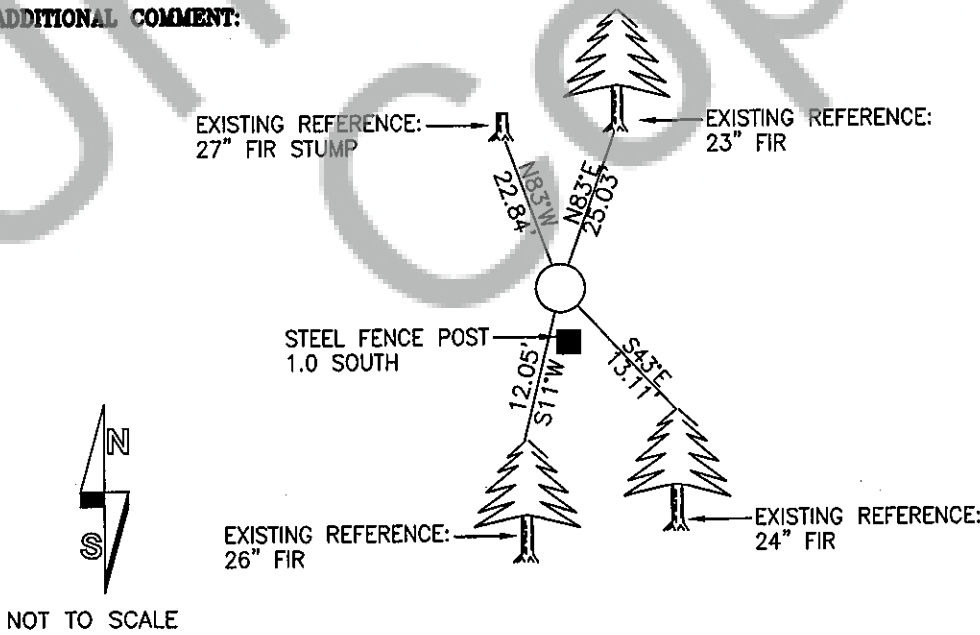
For corners that are between lines, the corner code is both line segments; i.e., a corner in the SE 1/4 of the SE 1/4 of section 18 is designated MN 4-5.

	1	2	3	4	5	6	7	8	9	10	11	12	13	14	15	16	17	18	19	20	21	22	23	24	25
A																									
B																									
C		6					5				4				3				2					1	
D																									
E																									
F																									
G		7					8				9				10				11				12		
H																									
J																									
K																									
L		18					17				16				15				14				13		
M																									
N																									
O																									
P		19					20				21				22				23				24		
Q																									
R																									
S																									
T																									
U		30					29				28				27				26				25		
V																									
W																									
X		31					32				33				34				35				36		
Y																									
Z																									

RCW 58.09.060 (2) requires the following information on this form: an accurate description and location, in reference to the corner position, of all monuments and accessories (a) found at the corner and (b) placed or replaced at the corner; (c) basis of bearings used to describe or locate such monuments or accessories; and (d) corollary information that may be helpful to relocate or identify the corner position.

SPACE FOR ADDITIONAL COMMENT:

NOTES:



BRASS CAP DETAIL