

LAND CORNER RECORD

GRANTOR/ SURVEYOR/ PUBLIC OFFICER: This corner record correctly represents work performed by me or under my direction in conformance with the Surveying Recording Act.

COMPANY OR AGENCY: LONGVIEW TIMBER

ADDRESS: PO BOX 667
LONGVIEW, WA 98632



12-09-2011

GRANTEE: PUBLIC

SEAL/SIGNATURE/DATE

LEGAL: SECTION 33 **TWP:** 3 NORTH **RGE:** 5 EAST **CORNER CODE:** V-11
ADDITIONAL IDENTIFIER: (e.g., BLM designation, street intersection, plat, block, lot, etc.)

COUNTY: SKAMANIA

WASHINGTON PLANE COORDINATES: **N:** **E:**
ORDER: **ZONE:** **DATUM (Date of adjustment):**

CORNER INFORMATION: Provide: (1) Pertinent History, (2) Evidence Found, and (3) Corner Perpetuation Information (diagram the references; provide the date of work; and, if applicable, reference to a map of record and/or the field book/page no.) Additional space is available on the back.

This corner was originally established by Deputy surveyor Robert A Webster in 1882, under contract #385. Webster notes setting a post with the following bearing trees.

60" Larch bears N49°E at 65 Links
30" Fir bears S1°W at 41 Links

In 1982 Olson Engineering searched for and did not find original corner set by Webster and reset corner by single proportion. Olson notes setting a 1" iron pipe with a brass cap with the following bearing trees.

10" Fir bears N71°E at 32.85' with railroad spike and three blazes facing corner.
18" Fir bears S49°E at 36.90' with railroad spike and three blazes facing corner.
17" Fir bears S65°W at 36.00' with railroad spike and three blazes facing corner.

In 2011 Longview Timber survey crew found corner Olson set and bearing trees listed in survey along with a 6" steel fence post south 1.0' from corner also painted bearing trees to Longview Timber standards.

10" Fir now a 22" bears N71°E at 32.85' with railroad spike and three blazes facing corner.
18" Fir now a 24" bears S49°E at 36.90' with railroad spike and three blazes facing corner.
17" Fir now a 27" bears S65°W at 36.00' with railroad spike and three blazes facing corner.

MARK THE CORNER LOCATION BELOW AND FILL IN THE CORNER CODE BLANK ON THE OTHER SIDE:

For corners at the intersection of two lines, the corner code is the alphanumeric coordinate that corresponds to the appropriate intersection of lines.

For corners that are only on one line, the corner code is the line designation and the related line segment: i.e., a corner on line 5 between "B" and "C" is designated BC-5.

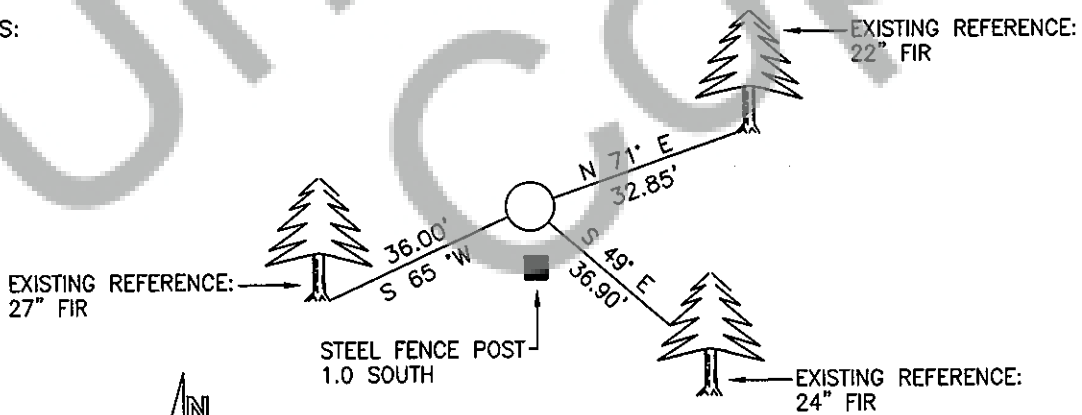
For corners that are between lines, the corner code is both line segments; i.e., a corner in the SE 1/4 of the SE 1/4 of section 18 is designated MN 4-5.

	1	2	3	4	5	6	7	8	9	10	11	12	13	14	15	16	17	18	19	20	21	22	23	24	25
A																									
B																									
C			6				5				4				3				2					1	
D																									
E																									
F																									
G			7				8				9				10				11					12	
H																									
J																									
K																									
L			18				17				16				15				14					13	
M																									
N																									
O																									
P			19				20				21				22				23					24	
Q																									
R																									
S																									
T																									
U			30				29				28				27				26					25	
V																									
W																									
X			31				32				33				34				35					36	
Y																									
Z																									

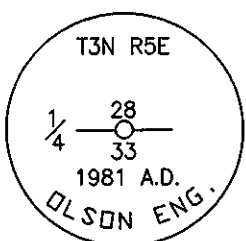
RCW 58.09.060 (2) requires the following information on this form: an accurate description and location, in reference to the corner position, of all monuments and accessories (a) found at the corner and (b) placed or replaced at the corner; (c) basis of bearings used to describe or locate such monuments or accessories; and (d) corollary information that may be helpful to relocate or identify the corner position.

SPACE FOR ADDITIONAL COMMENT:

NOTES:



NOT TO SCALE



BRASS CAP DETAIL